

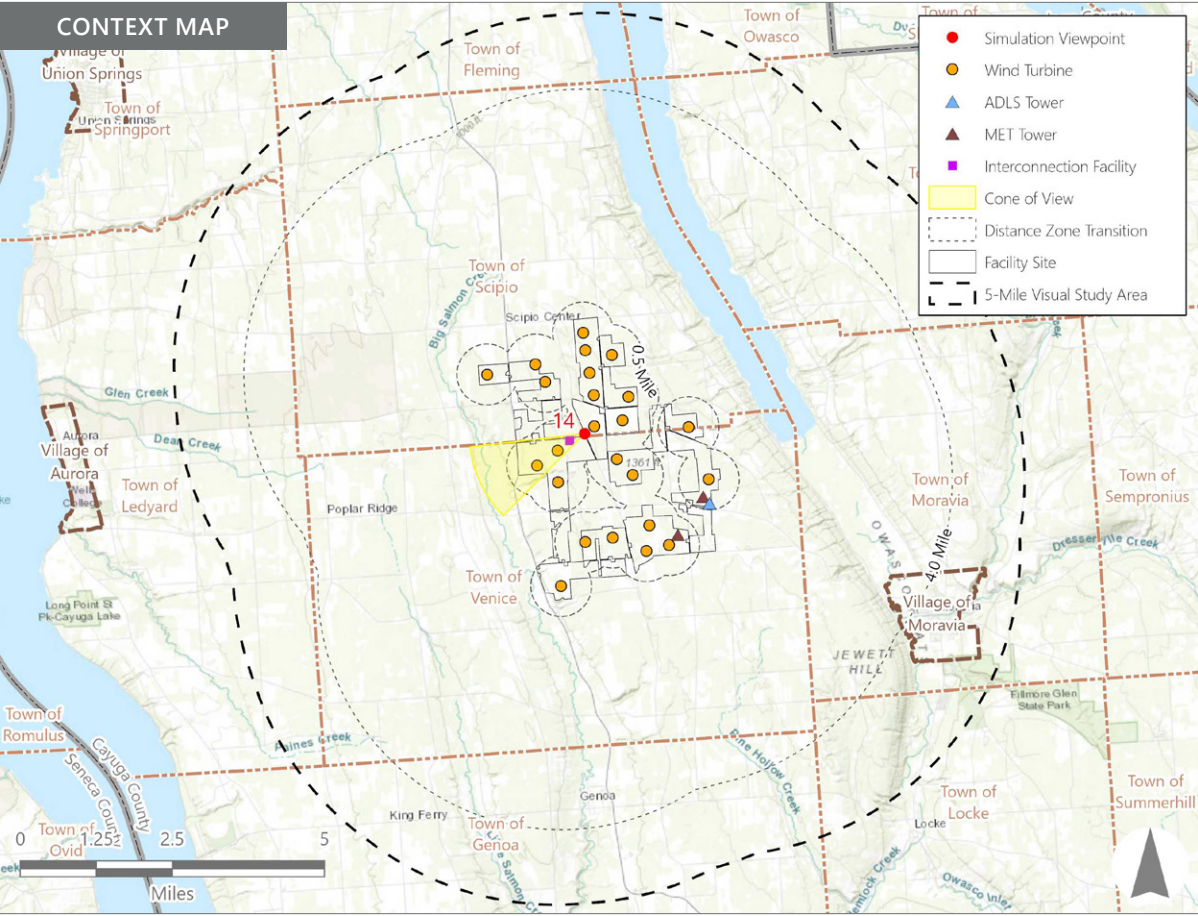
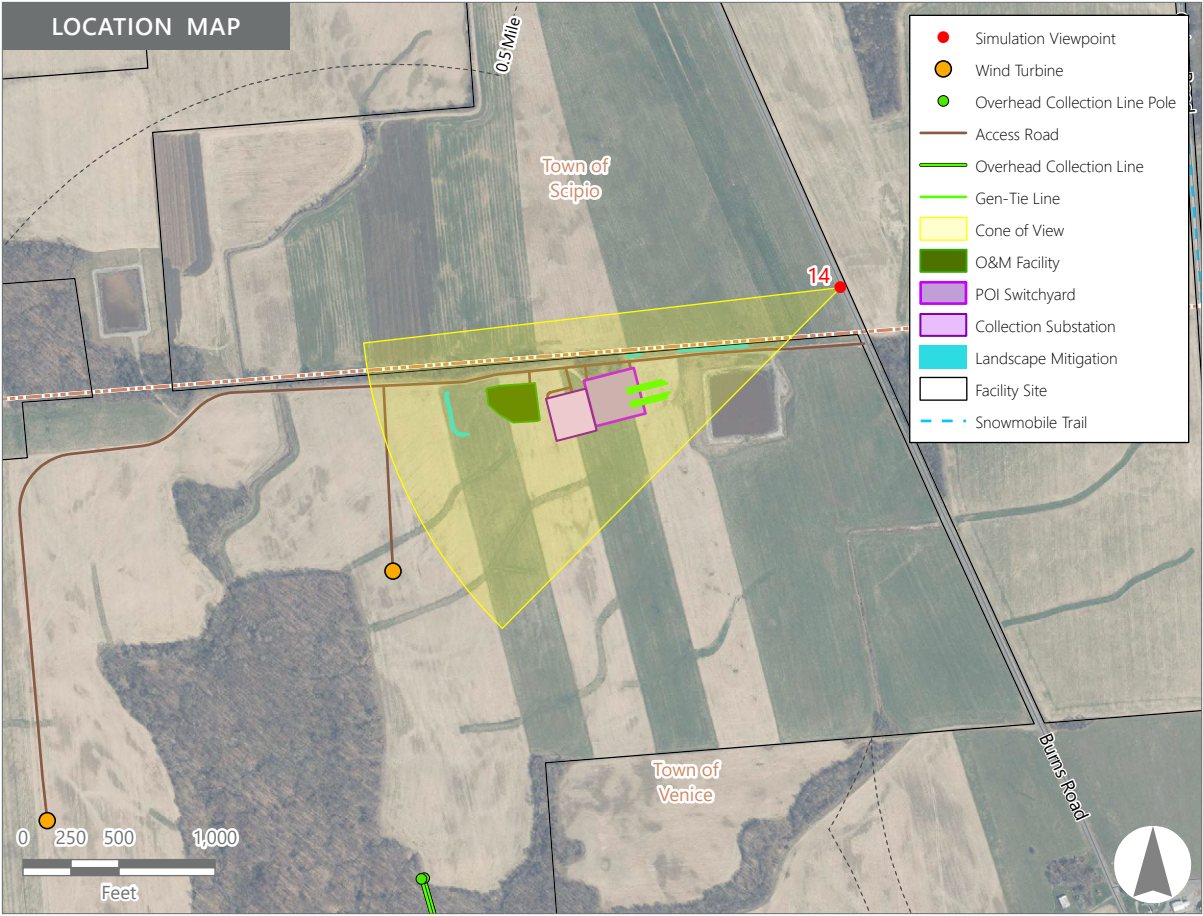


Note: The image above is a panorama composition panning clockwise from southeast (left) to northwest (right).

VIEWPOINT 14B
Burns Road

LOCATION INFORMATION

Municipality:	Town of Scipio
County:	Cayuga
Latitude:	42.75683° N
Longitude:	76.53422° W
Wind Turbine Distance*:	0.5 miles
Distance Zone Represented:	Foreground
Landscape Similarity Zone:	Agricultural/Rural Residential
Viewer/User Group(s):	Local Residents
Visually Sensitive Resource(s):	None Identified



PHOTOGRAPH INFORMATION

Date:	March 12, 2024
Time:	9:36 AM
Camera:	Canon EOS 5D Mark IV
Camera Resolution:	30.4 Megapixels
Lens Focal Length (35 mm sensor equivalent):	50 mm
Camera Elevation:	1,301 feet
Field of View:	39 degrees
Direction of View:	Southwest
Printed Size:	10 inches x 15 inches
Viewing Distance**:	21 inches

NOTES

*Distance as measured from the viewpoint to the closest wind turbine within the simulated photograph's field of view.

**The simulation is at the correct perspective when printed on an 11 inch by 17 inch sheet at full scale, and viewed approximately 21 inches from the eye of the viewer.

Agricola Wind Project

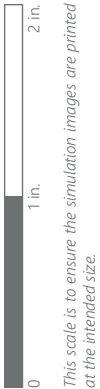
Towns of Venice and Scipio, Cayuga County, New York

Visual Impact Assessment Supplement
Appendix 8-C

EXISTING VIEW



Note: Printed at actual size, the existing view image is 15 inches wide by 10 inches high. At this size and focal length, the existing view image should be viewed from a distance 21 inches from the eye of the viewer.



VIEWPOINT 14B
Burns Road

PHOTOSIMULATION - FOLLOWING INSTALLATION WITHOUT MITIGATION



Note: Printed at actual size, the resulting simulation image is 15 inches wide by 10 inches high. At this size and focal length, the simulation should be viewed from a distance 21 inches from the eye of the viewer.

0 1 in. 2 in.
This scale is to ensure the simulation images are printed at the intended size.

VIEWPOINT 14B
Burns Road

Agricola Wind Project
Visual Impact Assessment Supplement, Appendix 8-C, Attachment B



PHOTOSIMULATION - FOLLOWING INSTALLATION (MITIGATION - LEAF ON)



Note: Printed at actual size, the resulting simulation image is 15 inches wide by 10 inches high. At this size and focal length, the simulation should be viewed from a distance 21 inches from the eye of the viewer.

0 1 in. 2 in.
This scale is to ensure the simulation images are printed at the intended size.

VIEWPOINT 14B
Burns Road

Agricola Wind Project
Visual Impact Assessment Supplement, Appendix 8-C, Attachment B



PHOTOSIMULATION - FOLLOWING INSTALLATION (MITIGATION - LEAF OFF)



Note: Printed at actual size, the resulting simulation image is 15 inches wide by 10 inches high. At this size and focal length, the simulation should be viewed from a distance 21 inches from the eye of the viewer.

0 1 in. 2 in.
This scale is to ensure the simulation images are printed at the intended size.

VIEWPOINT 14B
Burns Road

Agricola Wind Project
Visual Impact Assessment Supplement, Appendix 8-C, Attachment B



PHOTOSIMULATION - 5-7 YEARS FOLLOWING INSTALLATION (MITIGATION - LEAF ON)



Note: Printed at actual size, the resulting simulation image is 15 inches wide by 10 inches high. At this size and focal length, the simulation should be viewed from a distance 21 inches from the eye of the viewer.

0 1 in. 2 in.
This scale is to ensure the simulation images are printed at the intended size.

VIEWPOINT 14B
Burns Road

Agricola Wind Project
Visual Impact Assessment Supplement, Appendix 8-C, Attachment B



PHOTOSIMULATION - 5-7 YEARS FOLLOWING INSTALLATION (MITIGATION - LEAF OFF)



Note: Printed at actual size, the resulting simulation image is 15 inches wide by 10 inches high. At this size and focal length, the simulation should be viewed from a distance 21 inches from the eye of the viewer.

0 1 in. 2 in.
This scale is to ensure the simulation images are printed at the intended size.

VIEWPOINT 14B
Burns Road

Agricola Wind Project
Visual Impact Assessment Supplement, Appendix 8-C, Attachment B





Note: The image above is a panorama composition panning clockwise from west (left) to northeast (right).

VIEWPOINT 75B

LOCATION INFORMATION

<i>Municipality:</i>	Village of Moravia
<i>County:</i>	Cayuga
<i>Latitude:</i>	42.70276° N
<i>Longitude:</i>	76.41710° W
<i>Wind Turbine Distance*:</i>	4.9 miles
<i>Distance Zone Represented:</i>	Background
<i>Landscape Similarity Zone:</i>	Village
<i>Viewer/User Group(s):</i>	Local Residents
<i>Visually Sensitive Resource(s):</i>	
VSR ID # 55	Millard Fillmore Elementary School
VSR ID # 58	Village of Moravia

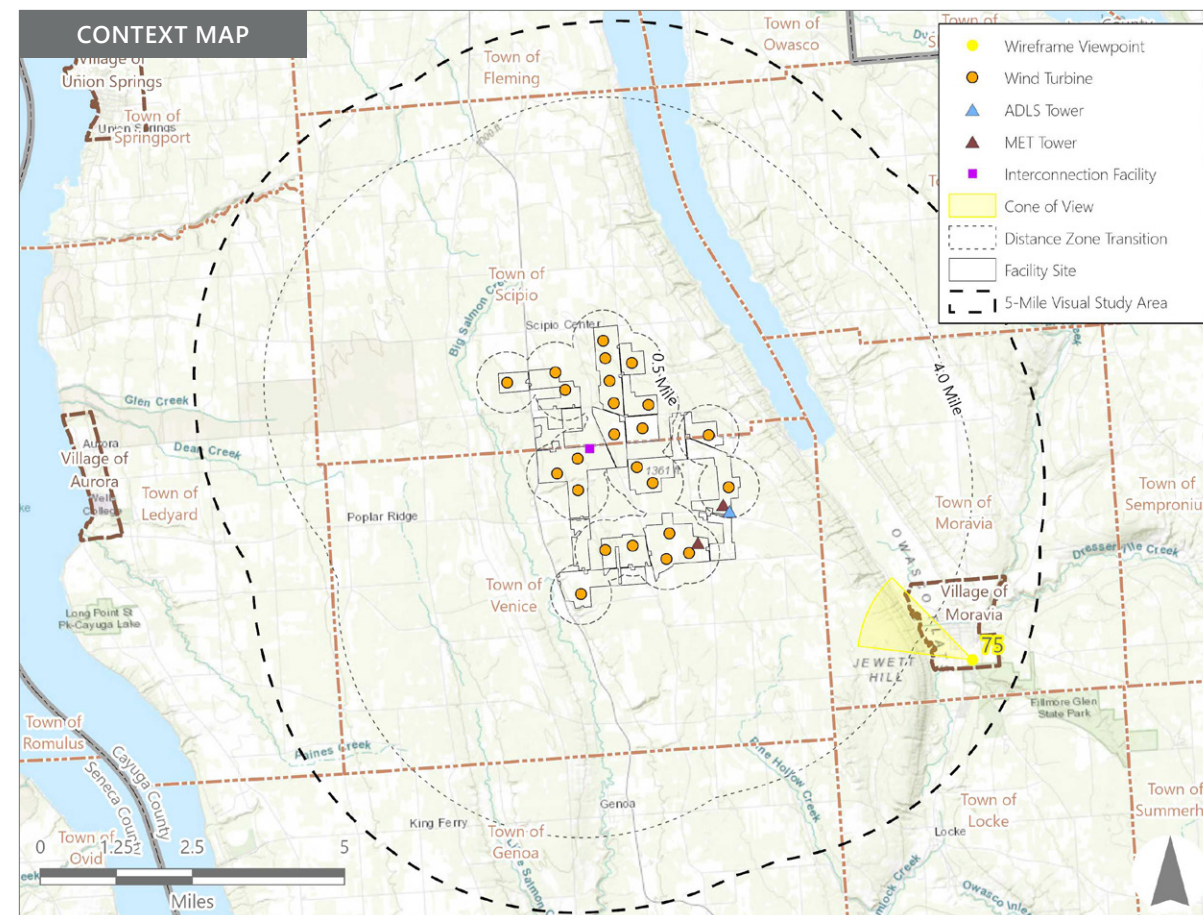
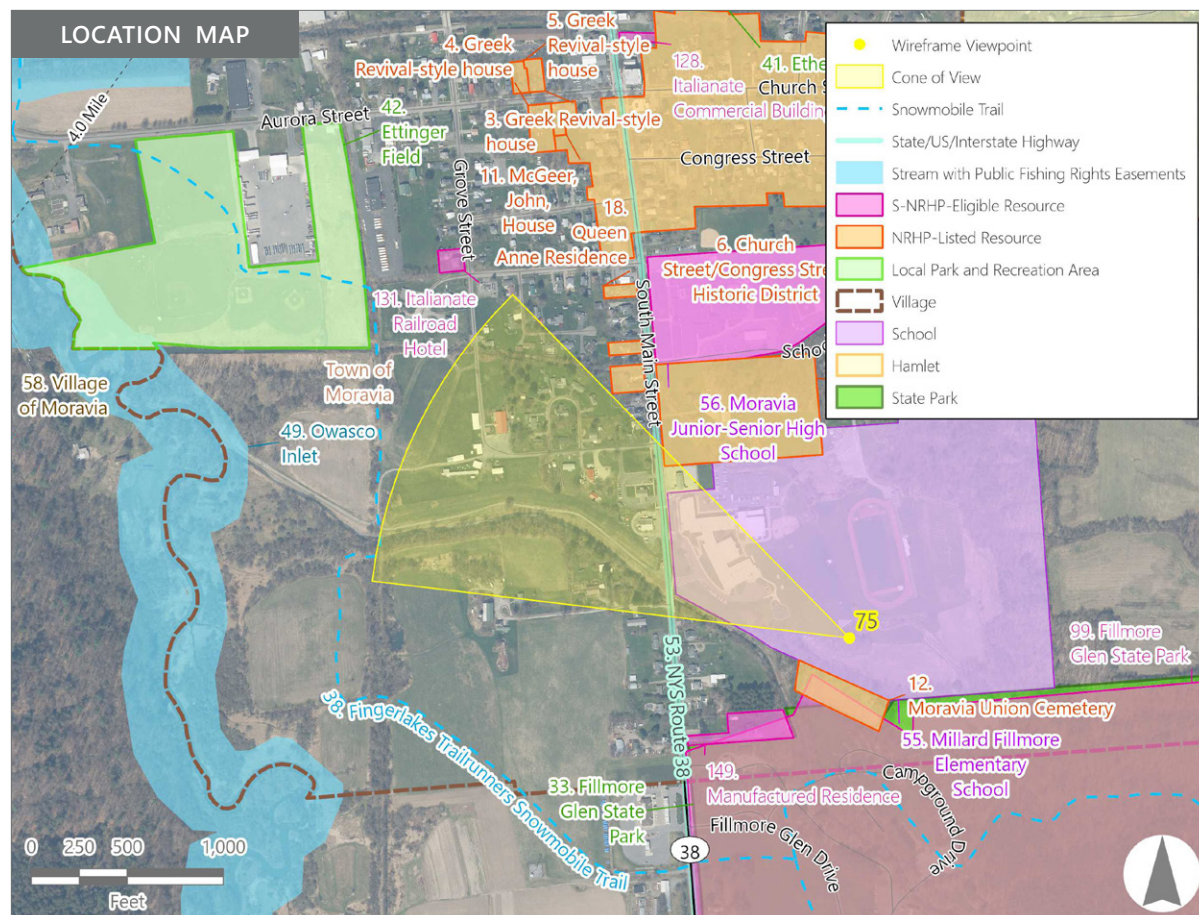
PHOTOGRAPH INFORMATION

<i>Date:</i>	January 21, 2025
<i>Time:</i>	11:30 AM
<i>Camera:</i>	Canon EOS 5D Mark IV
<i>Camera Resolution:</i>	30.4 Megapixels
<i>Lens Focal Length (35 mm sensor equivalent):</i>	50 mm
<i>Camera Elevation:</i>	772 feet
<i>Field of View:</i>	39 degrees
<i>Direction of View:</i>	Northwest
<i>Printed Size:</i>	10 inches x 15 inches
<i>Viewing Distance**:</i>	21 inches

NOTES

**Distance as measured from the viewpoint to the closest wind turbine within the simulated photograph's field of view.*

***The wireframe rendering is the correct perspective when printed on an 11 inch by 17 inch sheet at full scale, and viewed approximately 21 inches from the eye of the viewer.*



Agricola Wind Project

Towns of Venice and Scipio, Cayuga County, New York

**Visual Impact Assessment Supplement
Appendix 8-C**

EXISTING VIEW



Note: Printed at actual size, the existing view image is 15 inches wide by 10 inches high. At this size and focal length, the existing view image should be viewed from a distance 21 inches from the eye of the viewer.

0

1 in.

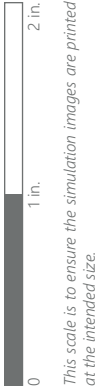
2 in.

This scale is to ensure the simulation images are printed at the intended size.

VIEWPOINT 75B
Moravia School Field



Note: Printed at actual size, the resulting wireframe rendering is 15 inches wide by 10 inches high. At this size and focal length, the rendering should be viewed from a distance 21 inches from the eye of the viewer.



VIEWPOINT 75B
Moravia School Field

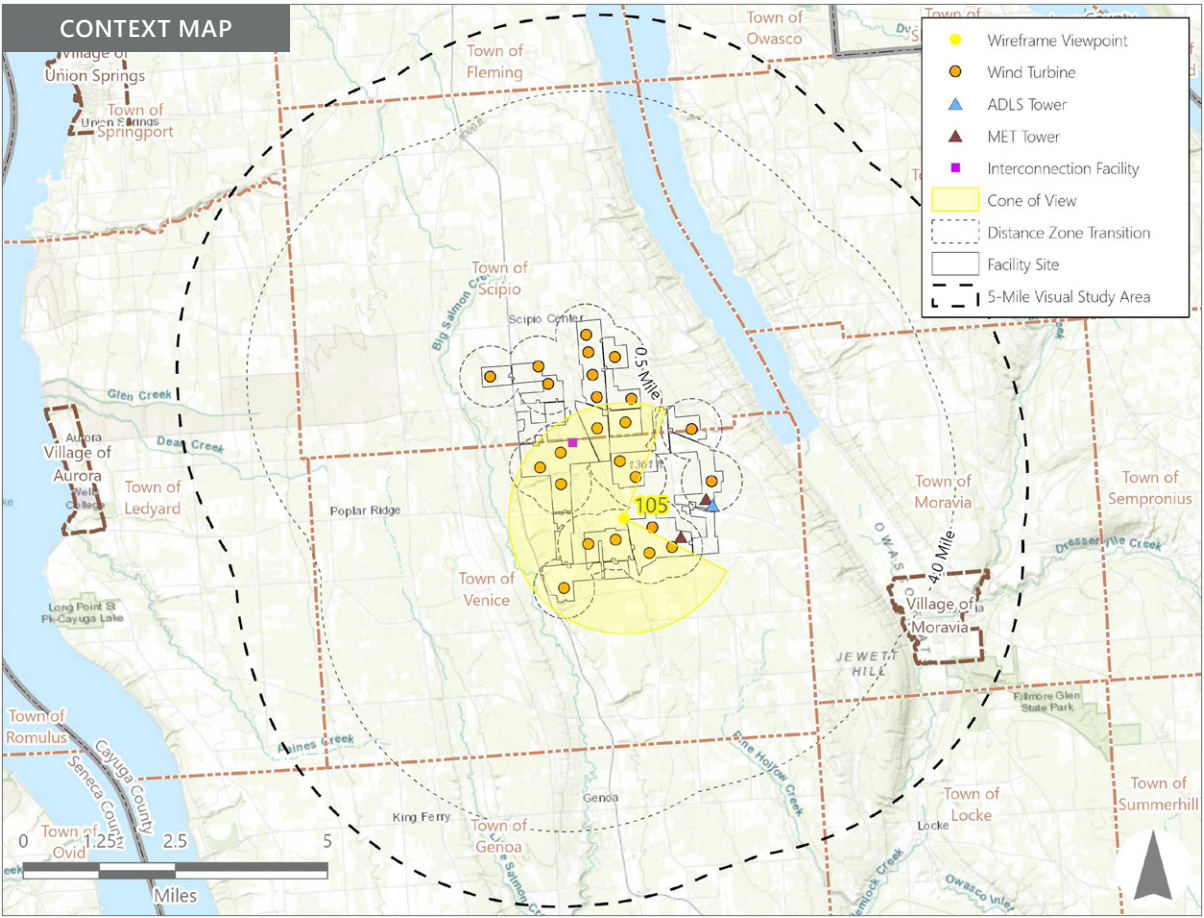
VIEWPOINT 105B
Stewarts Corners Road

LOCATION INFORMATION

Municipality:	Town of Venice
County:	Cayuga
Latitude:	42.73693° N
Longitude:	76.52303° W
Wind Turbine Distance*:	0.2 miles
Distance Zone Represented:	Foreground
Landscape Similarity Zone:	Agricultural/Rural Residential
Viewer/User Group(s):	Local Residents
Visually Sensitive Resource(s):	
VSR ID # 200	Venice Baptist Church



Note: The image above is a panorama composition panning clockwise from southeast (left) to northeast (right). This panorama is the total extent of the wireframe renderings.



PHOTOGRAPH INFORMATION

Date:	January 21, 2025
Time:	10:47 AM
Camera:	Canon EOS 5D Mark IV
Camera Resolution:	30.4 Megapixels
Lens Focal Length (35 mm sensor equivalent):	50 mm
Camera Elevation:	1,298 feet
Field of View**:	264 degrees
Direction of View:	Southeast to northeast
Printed Size:	10 inches x 15 inches
Viewing Distance***:	21 inches

NOTES

*Distance as measured from the viewpoint to the closest wind turbine within the simulated photograph's field of view.

**The simulated field of view is comprised of multiple single frame simulations, each with a field of view of 39 degrees.

***The single-frame wireframe renderings are at the correct perspective when printed on an 11 inch by 17 inch sheet at full scale, and viewed approximately 21 inches from the eye of the viewer.



EXISTING VIEW (1 OF 10)

Note: Printed at actual size, the existing view image is 15 inches wide by 10 inches high. At this size and focal length, the existing view image should be viewed from a distance 21 inches from the eye of the viewer.

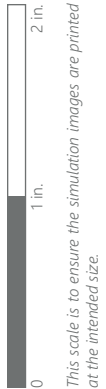


VIEWPOINT 105B
Stewarts Corners Road



PHOTOSIMULATION (1 OF 10)

Note: Printed at actual size, the resulting simulation image is 15 inches wide by 10 inches high. At this size and focal length, the simulation should be viewed from a distance 21 inches from the eye of the viewer.



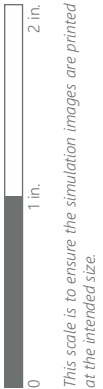
VIEWPOINT 105B
Stewarts Corners Road

Agricola Wind Project
Visual Impact Assessment Supplement, Appendix 8-C, Attachment B





Note: Printed at actual size, the resulting wireframe rendering is 15 inches wide by 10 inches high. At this size and focal length, the rendering should be viewed from a distance 21 inches from the eye of the viewer.



VIEWPOINT 105B
Stewarts Corners Road

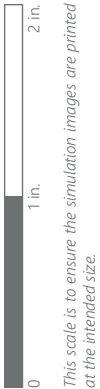
Agricola Wind Project
Visual Impact Assessment Supplement, Appendix 8-C, Attachment B





EXISTING VIEW (2 OF 10)

Note: Printed at actual size, the existing view image is 15 inches wide by 10 inches high. At this size and focal length, the existing view image should be viewed from a distance 21 inches from the eye of the viewer.



VIEWPOINT 105B
Stewarts Corners Road