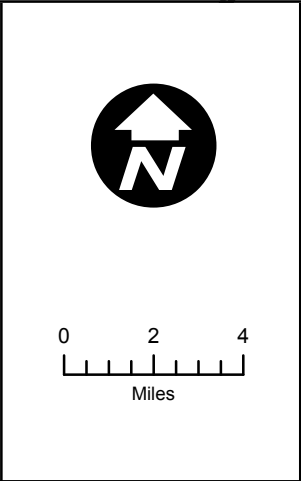


Legend


- ▲ Substation
- Preferred Route
- ▭ Oneida County Zoning Map Extent
- ▭ County Boundary
- ▭ City/Town/Village Boundary



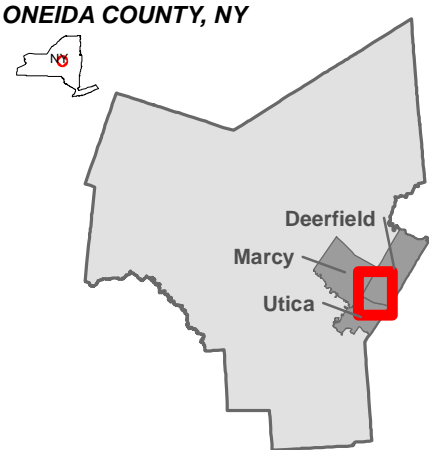
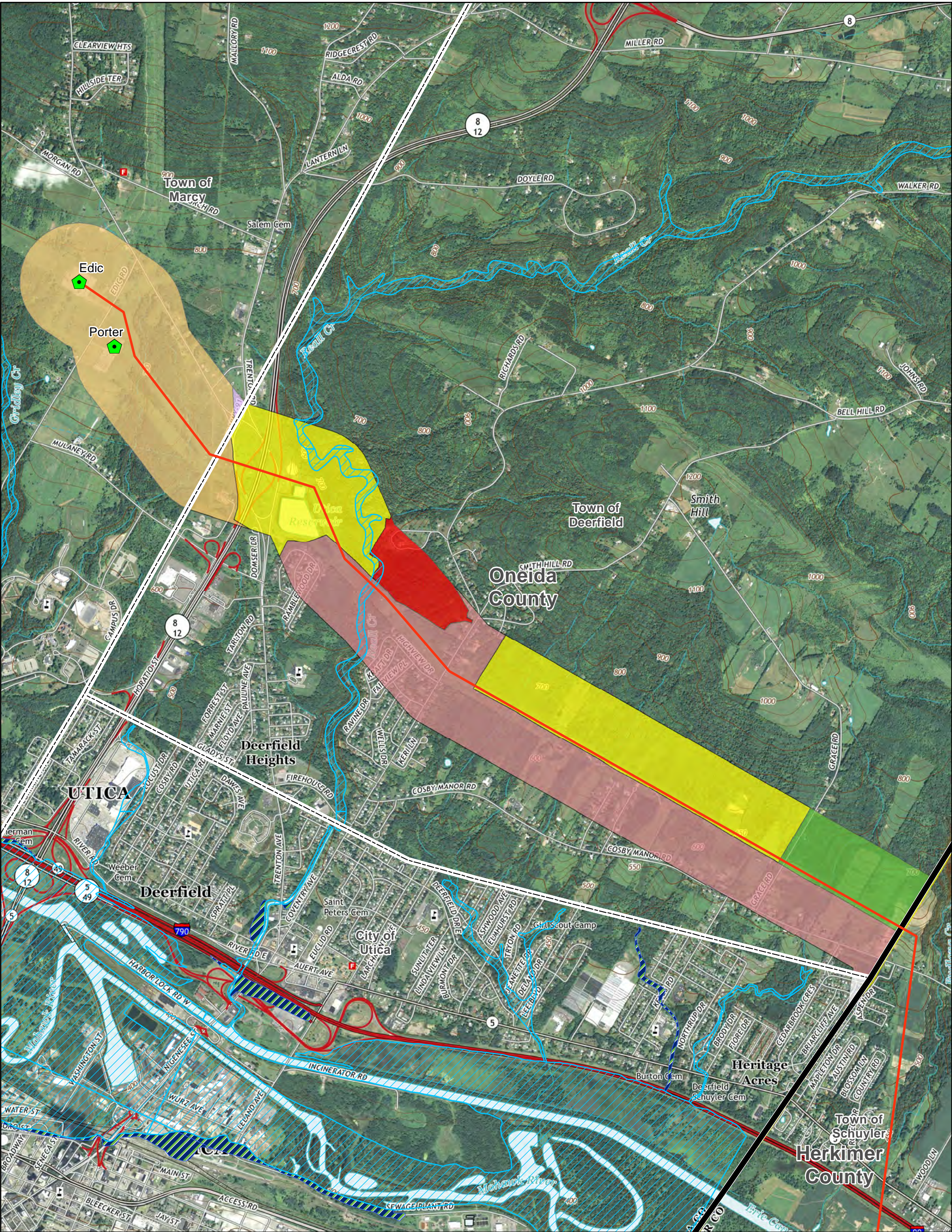
Oneida County Zoning Map Overview

Edic to Pleasant Valley
345kV Transmission Line

nationalgrid

 **TETRA TECH**

November 2013



- Legend**
- Preferred Route
 - County Boundary
 - City/Town/Village Boundary
 - Substation
 - Floodway**
 - 100-year floodplain
 - 500-year floodplain
- Town of Marcy Zoning**
- Neighborhood
 - Residential 20,000
- Town of Deerfield Zoning**
- Agriculture
 - Highway Commercial
 - Planned Development - Extraordinary
 - Residential (10,000 SF)
 - Residential - Agriculture (2 Acres)
- City of Utica Zoning**
- Single Family - Medium Density

Sources: Digital USGS Quadrangle Sheets, FEMA Q3 Flood Data, Municipality Zoning maps have been digitized (0.25 mi either side of route)



0 1,000 2,000
Feet

1 inch = 2,000 feet
1:24,000

Oneida County Zoning

Marcy, Deerfield, Utica

Edic to Pleasant Valley
345kV Transmission Line
nationalgrid



November 2013