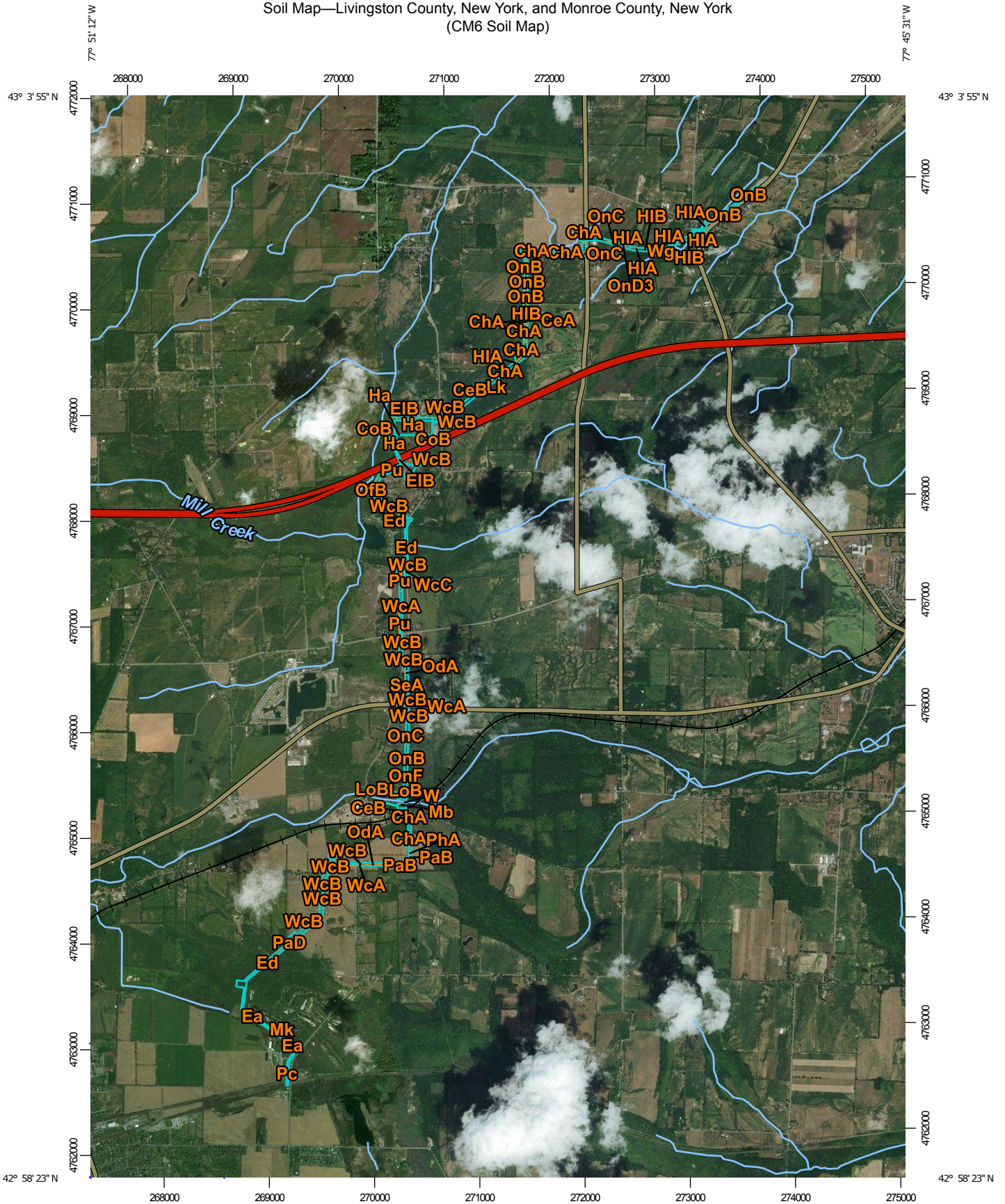
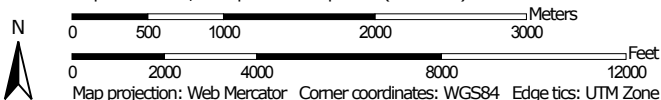


Soil Map—Livingston County, New York, and Monroe County, New York
(CM6 Soil Map)



Map Scale: 1:49,900 if printed on A portrait (8.5" x 11") sheet.



Map projection: Web Mercator Corner coordinates: WGS84 Edge tics: UTM Zone 18N WGS84



Natural Resources
Conservation Service


Web Soil Survey
National Cooperative Soil Survey

3/22/2018
Page 1 of 4

Soil Map—Livingston County, New York, and Monroe County, New York
(CM6 Soil Map)

MAP LEGEND

Area of Interest (AOI)

 Area of Interest (AOI)

Soils

 Soil Map Unit Polygons

 Soil Map Unit Lines

 Soil Map Unit Points

Special Point Features



Blowout



Borrow Pit



Clay Spot



Closed Depression



Gravel Pit



Gravelly Spot



Landfill



Lava Flow



Marsh or swamp



Mine or Quarry



Miscellaneous Water



Perennial Water



Rock Outcrop



Saline Spot



Sandy Spot



Severely Eroded Spot



Sinkhole



Slide or Slip



Sodic Spot



Spoil Area



Stony Spot



Very Stony Spot



Wet Spot



Other



Special Line Features

Water Features



Streams and Canals

Transportation



Rails



Interstate Highways



US Routes



Major Roads



Local Roads

Background



Aerial Photography

MAP INFORMATION

The soil surveys that comprise your AOI were mapped at scales ranging from 1:15,800 to 1:31,700.

Please rely on the bar scale on each map sheet for map measurements.

Source of Map: Natural Resources Conservation Service

Web Soil Survey URL:

Coordinate System: Web Mercator (EPSG:3857)

Maps from the Web Soil Survey are based on the Web Mercator projection, which preserves direction and shape but distorts distance and area. A projection that preserves area, such as the Albers equal-area conic projection, should be used if more accurate calculations of distance or area are required.

This product is generated from the USDA-NRCS certified data as of the version date(s) listed below.

Soil Survey Area: Livingston County, New York

Survey Area Data: Version 14, Oct 8, 2017

Soil Survey Area: Monroe County, New York

Survey Area Data: Version 15, Oct 8, 2017

Your area of interest (AOI) includes more than one soil survey area. These survey areas may have been mapped at different scales, with a different land use in mind, at different times, or at different levels of detail. This may result in map unit symbols, soil properties, and interpretations that do not completely agree across soil survey area boundaries.

Soil map units are labeled (as space allows) for map scales 1:50,000 or larger.

Date(s) aerial images were photographed: Aug 31, 2012—Oct 11, 2016

The orthophoto or other base map on which the soil lines were compiled and digitized probably differs from the background imagery displayed on these maps. As a result, some minor shifting of map unit boundaries may be evident.

Map Unit Legend

Map Unit Symbol	Map Unit Name	Acres in AOI	Percent of AOI
Ea	Edwards muck	3.1	2.9%
Mk	Marl pits	0.8	0.8%
Pc	Palmyra gravelly loam, nearly level	1.4	1.3%
Subtotals for Soil Survey Area		5.3	5.1%
Totals for Area of Interest		104.7	100.0%

Map Unit Symbol	Map Unit Name	Acres in AOI	Percent of AOI
ApA	Appleton loam, 0 to 3 percent slopes	0.9	0.8%
CeA	Cayuga silt loam, 0 to 2 percent slopes	0.6	0.6%
CeB	Cayuga silt loam, 2 to 6 percent slopes	4.7	4.5%
ChA	Churchville silt loam, 0 to 2 percent slopes	4.8	4.6%
ChB	Churchville silt loam, 2 to 6 percent slopes	0.0	0.0%
CoB	Colonie loamy fine sand, 0 to 6 percent slopes	4.2	4.0%
Ed	Edwards muck	6.6	6.3%
Ee	Eel silt loam	1.4	1.3%
EIB	Elnora loamy fine sand, 2 to 6 percent slopes	1.6	1.5%
Ha	Halsey gravelly loam	1.4	1.4%
HIA	Hilton loam, 0 to 3 percent slopes	5.2	5.0%
HIB	Hilton loam, 3 to 8 percent slopes	6.6	6.3%
Le	Lakemont silt loam, 0 to 3 percent slopes	0.2	0.2%
Lk	Lakemont silt loam, loamy subsoil variant	3.2	3.1%
LoB	Lima and Cazenovia soils, 0 to 6 percent slopes, bedrock substratum phase	0.5	0.5%
Mb	Made land	1.2	1.1%
OdA	Odessa silt loam, 0 to 3 percent slopes	1.0	1.0%
OfB	Ontario fine sandy loam, 3 to 8 percent slopes	0.0	0.0%

Map Unit Symbol	Map Unit Name	Acres in AOI	Percent of AOI
OnB	Ontario loam, 3 to 8 percent slopes	10.6	10.1%
OnC	Ontario loam, 8 to 15 percent slopes	1.8	1.7%
OnD3	Ontario loam, 15 to 25 percent slopes	0.9	0.8%
OnF	Ontario loam, 25 to 60 percent slopes	0.7	0.7%
PaB	Palmyra gravelly fine sandy loam, 3 to 8 percent slopes	1.8	1.7%
PaC	Palmyra gravelly fine sandy loam, 8 to 15 percent slopes	1.5	1.4%
PaD	Palmyra gravelly fine sandy loam, 15 to 25 percent slopes	0.2	0.2%
PhA	Phelps gravelly fine sandy loam, 0 to 3 percent slopes	0.3	0.3%
Pu	Pits and quarries	8.3	7.9%
SeA	Schoharie silt loam, 0 to 3 percent slopes	1.3	1.3%
W	Water	0.1	0.1%
WcA	Wampsville cobbly loam, 0 to 3 percent slopes	10.3	9.8%
WcB	Wampsville cobbly loam, 3 to 8 percent slopes	16.7	15.9%
WcC	Wampsville cobbly loam, 8 to 15 percent slopes	0.7	0.6%
Wg	Wayland soils complex, 0 to 3 percent slopes, frequently flooded	0.3	0.3%
Subtotals for Soil Survey Area		99.4	94.9%
Totals for Area of Interest		104.7	100.0%