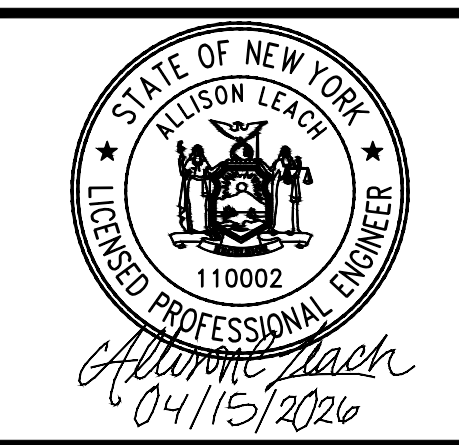


LEGEND:

T-#	TURBINE LOCATION	EX. UTILITY EASEMENT
ADLS-#	ADLS TOWER	EX. RIGHT OF WAY
M-#	PERMANENT MET TOWER	EX. STREAM CHANNEL
	PERMANENT ACCESS ROAD	PROTECTION FENCE
	TEMPORARY INTERSECTION	EX. WATER WELL
	UNDERGROUND COLLECTION AND COMMUNICATION	EX. CULVERTS
	PROPOSED JUNCTION BOX	EX. WETLAND
	BORE LOCATION	50-FT NYS-REGULATED STREAM BUFFER
	DISTURBANCE LIMITS	75-FT NYS-REGULATED WETLAND BUFFER
	GRADING LIMITS	100-FT NYS-REGULATED WETLAND BUFFER
	EXISTING ROADS	EX. ENVIRONMENTALLY SENSITIVE AREA
	PARCEL LINES (BOUNDARY SURVEY)	FEMA MAPPED FLOOD HAZARD AREA
	NON-PARTICIPATING LAND	PROPOSED FACILITIES
	EX. INDEX CONTOUR	APPROXIMATE PROPOSED SPOILS AND LOG STORAGE, TEMPORARY
	EX. INTERVAL CONTOUR	PROPOSED TEMPORARY CROSSING
	PROPOSED INDEX CONTOUR	
	PROPOSED INTERVAL CONTOUR	
	EX. GAS PIPELINE	
	EX. OVERHEAD POWER	

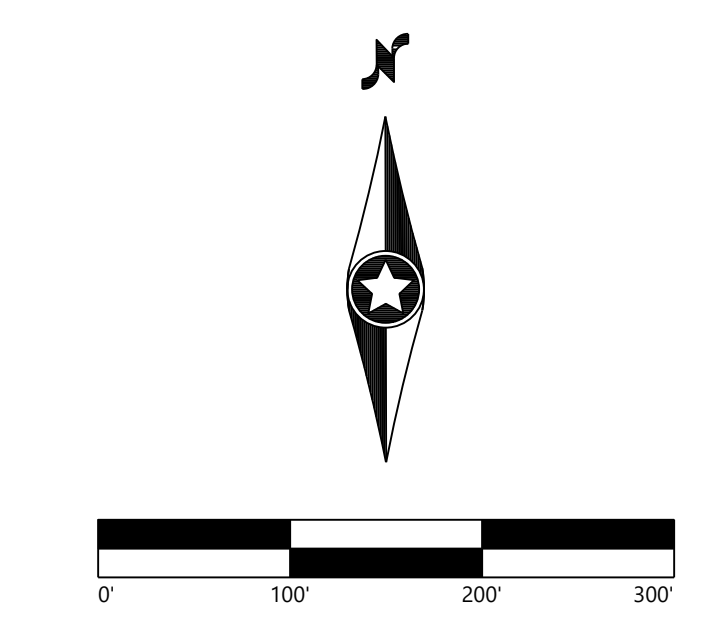
- TREE CLEARING LEGEND:**
- | | | | | | |
|--|------------|--|-----------|--|-----------------------|
| | FORESTLAND | | SHRUBLAND | | TREE & SHRUB CLEARING |
|--|------------|--|-----------|--|-----------------------|
- AT LEAST TWO WEEKS BEFORE TREE CLEARING OR GROUND DISTURBING ACTIVITIES, FLAG THE LIMITS OF DISTURBANCE, THE BOUNDARIES OF ANY DELINEATED WETLANDS, AND WATERBODIES OR STREAMS IN THE DISTURBANCE LIMITS ALL ON OR OFF RIGHT-OF-WAY ACCESS ROADS, LIMITS OF CLEARING AND OTHER AREAS NEEDED FOR CONSTRUCTION, INCLUDING, BUT NOT LIMITED TO, TURBINE WORK AREAS, PROPOSED INFILTRATION AREAS FOR POST CONSTRUCTION STORMWATER MANAGEMENT, AND LAYDOWN AND STORAGE AREAS. IN ADDITION, ENVIRONMENTALLY SENSITIVE AREAS SHALL BE SURROUNDED WITH CONSTRUCTION FENCING AND A SIGN STATING RESTRICTED ACCESS.
 - SIGNIFICANT GROUND DISTURBANCE IS DEFINED AS EXCAVATION OR GRADING MORE THAN 6 INCHES DEEP, GRUBBING OR STUMP REMOVAL, AND TRENCHING WIDER THAN 3 FEET.
 - TREES WILL BE FELLED AND CUT TO APPROXIMATE LENGTHS WITHIN THE LIMITS OF DISTURBANCE IN PROXIMITY TO THE PROPOSED LOG STORAGE AREA. FELLED TIMBER WILL BE STACKED IN PLACE UNTIL SUFFICIENT SPACE HAS BEEN CLEARED TO ESTABLISH IDENTIFIED LOG STORAGE AREAS. APPROXIMATE LOG STORAGE AREAS WILL BE FINALIZED BASED ON FIELD CONDITIONS.
 - THE LIMITS OF TREE AND SHRUB CLEARING ARE BASED ON THE ECOLOGICAL COMMUNITY DATA DISCUSSED IN EXHIBIT 11 OF ARTICLE VIII APPLICATION. SEE EXHIBIT 11 FOR FURTHER DISCUSSION OF THE ECOLOGICAL COMMUNITY TYPES AND FACILITY'S IMPACTS TO FORESTLAND AND SHRUBLAND.
 - LOCATIONS OF LOG STOCKPILE AREAS MAY BE MODIFIED BASED ON FIELD CONDITIONS IN COORDINATION WITH ENVIRONMENTAL MONITOR (EM).
 - LOW IMPACT VEHICLES ONLY IN ACTIVE AGRICULTURAL AREAS. IF EXCESSIVE RUTTING OR SOIL COMPACTION ABOVE 1.5 INCHES IS OBSERVED, TEMPORARY TIMBER MATTING SHALL BE UTILIZED.
 - TREES AND OTHER WOODY VEGETATION WITHIN WETLANDS OR STREAMS ARE TO BE HANDCUT. NO GRUBBING OR STUMP REMOVAL ALLOWED AT ANY STAGE OF CONSTRUCTION.
 - WETLANDS AND STREAMS ARE TO BE PROTECTED FROM ALL DISTURBANCE. NO MECHANICAL EQUIPMENT IS ALLOWED WITHIN WETLANDS OR STREAMS. ALL TEMPORARY CROSSINGS OF WETLANDS AND STREAMS BY EQUIPMENT SHALL BE ACCOMPLISHED USING MATTING AND ALL JURISDICTIONAL IMPACTS SHALL BE AVOIDED DURING INSTALLATION, USE, AND REMOVAL.
 - ISOLATED TREES MAY EXIST OUTSIDE OF SPECIFIED TREE CLEARING LOCATIONS BUT WITHIN THE LIMIT OF DISTURBANCE (LOD). THE CONTRACTOR IS TO REVIEW THE ENTIRE LIMITS OF DISTURBANCE TO ENSURE ALL TREES AND SHRUBS ARE REMOVED. ISOLATED TREES ARE ANTICIPATED TO BE HAND FELLED AND LEFT IN PLACE UNLESS EQUIPMENT IS ABLE TO ACCESS THESE LOCATIONS WITHOUT ADVERSE IMPACT.
 - IN THE EVENT THAT ARCHAEOLOGICAL MATERIALS, HUMAN REMAINS, OR EVIDENCE OF HUMAN BURIALS ARE ENCOUNTERED DURING CONSTRUCTION, ALL WORK IN THE VICINITY OF THE FIND WILL BE IMMEDIATELY HALTED AND THE UNANTICIPATED DISCOVERY PLAN WILL BE IMPLEMENTED.



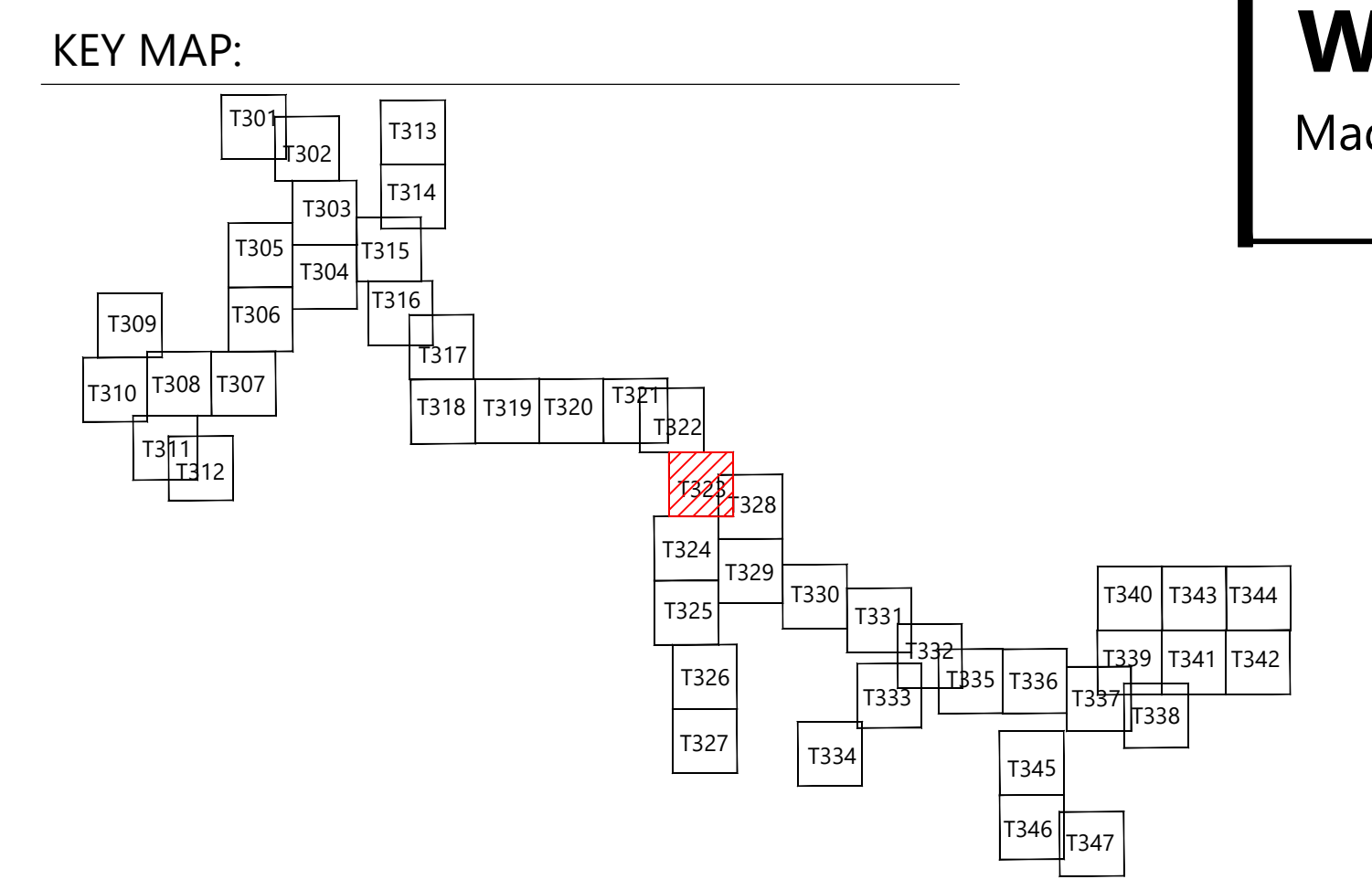
PREPARED FOR:
Hoffman Falls Wind LLC
 90 State Street
 Albany, NY 12207

REVISIONS:

#	DATE	COMMENT	BY	CHK	APR
0	01/30/2026	IFC SET	NA	HC	AL
1	04/15/2026	ORES COMMENTS	NA	HC	AL



Hoffman Falls Wind Project
 Madison County, New York



Tree Clearing - MET-1

ISSUE FOR CONSTRUCTION
 DATE: 04/15/2026 REV: 1
 SHEET: T323 1



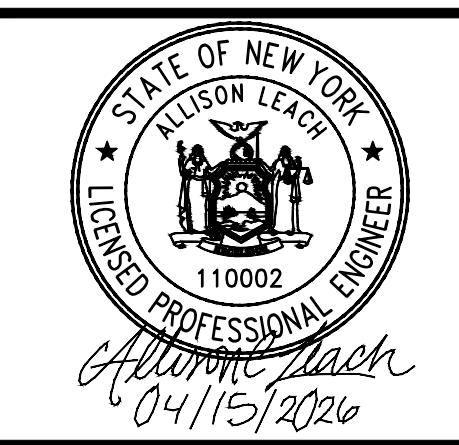
LEGEND:

- T-#** TURBINE LOCATION
- ADLS-#** ADLS TOWER
- M-#** PERMANENT MET TOWER
- PERMANENT ACCESS ROAD
- TEMPORARY INTERSECTION
- UNDERGROUND COLLECTION AND COMMUNICATION
- PROPOSED JUNCTION BOX
- BORE LOCATION
- DL DISTURBANCE LIMITS
- GL GRADING LIMITS
- EXISTING ROADS
- PARCEL LINES (BOUNDARY SURVEY)
- NON-PARTICIPATING LAND
- EX. INDEX CONTOUR
- EX. INTERVAL CONTOUR
- PROPOSED INDEX CONTOUR
- PROPOSED INTERVAL CONTOUR
- GAS EX. GAS PIPELINE
- POH EX. OVERHEAD POWER
- EX. UTILITY EASEMENT
- EX. RIGHT OF WAY
- EX. STREAM CHANNEL
- PROTECTION FENCE
- EX. WATER WELL
- EX. CULVERTS
- EX. WETLAND
- 50-FT NYS-REGULATED STREAM BUFFER
- 75-FT NYS-REGULATED WETLAND BUFFER
- 100-FT NYS-REGULATED WETLAND BUFFER
- EX. ENVIRONMENTALLY SENSITIVE AREA
- FEMA MAPPED FLOOD HAZARD AREA
- PROPOSED FACILITIES
- APPROXIMATE PROPOSED SPOILS AND LOG STORAGE, TEMPORARY
- PROPOSED TEMPORARY CROSSING

TREE CLEARING LEGEND:

- FORESTLAND
- SHRUBLAND
- TREE & SHRUB CLEARING

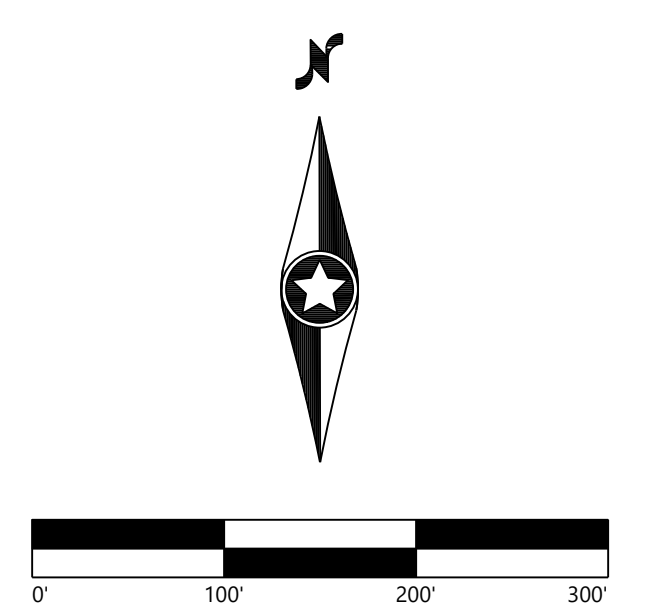
1. AT LEAST TWO WEEKS BEFORE TREE CLEARING OR GROUND DISTURBING ACTIVITIES, FLAG THE LIMITS OF DISTURBANCE, THE BOUNDARIES OF ANY DELINEATED WETLANDS, AND WATERBODIES OR STREAMS IN THE DISTURBANCE LIMITS ALL ON OR OFF RIGHT-OF-WAY ACCESS ROADS, LIMITS OF CLEARING AND OTHER AREAS NEEDED FOR CONSTRUCTION, INCLUDING, BUT NOT LIMITED TO, TURBINE WORK AREAS, PROPOSED INFILTRATION AREAS FOR POST CONSTRUCTION STORMWATER MANAGEMENT, AND LAYDOWN AND STORAGE AREAS. IN ADDITION, ENVIRONMENTALLY SENSITIVE AREAS SHALL BE SURROUNDED WITH CONSTRUCTION FENCING AND A SIGN STATING RESTRICTED ACCESS.
2. SIGNIFICANT GROUND DISTURBANCE IS DEFINED AS EXCAVATION OR GRADING MORE THAN 6 INCHES DEEP, GRUBBING OR STUMP REMOVAL, AND TRENCHING WIDER THAN 3 FEET.
3. TREES WILL BE FELLED AND CUT TO APPROXIMATE LENGTHS WITHIN THE LIMITS OF DISTURBANCE IN PROXIMITY TO THE PROPOSED LOG STORAGE AREA. FELLED TIMBER WILL BE STACKED IN PLACE UNTIL SUFFICIENT SPACE HAS BEEN CLEARED TO ESTABLISH IDENTIFIED LOG STORAGE AREAS. APPROXIMATE LOG STORAGE AREAS WILL BE FINALIZED BASED ON FIELD CONDITIONS.
4. THE LIMITS OF TREE AND SHRUB CLEARING ARE BASED ON THE ECOLOGICAL COMMUNITY DATA DISCUSSED IN EXHIBIT 11 OF ARTICLE VIII APPLICATION. SEE EXHIBIT 11 FOR FURTHER DISCUSSION OF THE ECOLOGICAL COMMUNITY TYPES AND FACILITY'S IMPACTS TO FORESTLAND AND SHRUBLAND.
5. LOCATIONS OF LOG STOCKPILE AREAS MAY BE MODIFIED BASED ON FIELD CONDITIONS IN COORDINATION WITH ENVIRONMENTAL MONITOR (EM).
6. LOW IMPACT VEHICLES ONLY IN ACTIVE AGRICULTURAL AREAS. IF EXCESSIVE RUTTING OR SOIL COMPACTION ABOVE 1.5 INCHES IS OBSERVED, TEMPORARY TIMBER MATTING SHALL BE UTILIZED.
7. TREES AND OTHER WOODY VEGETATION WITHIN WETLANDS OR STREAMS ARE TO BE HANDCUT. NO GRUBBING OR STUMP REMOVAL ALLOWED AT ANY STAGE OF CONSTRUCTION.
8. WETLANDS AND STREAMS ARE TO BE PROTECTED FROM ALL DISTURBANCE. NO MECHANICAL EQUIPMENT IS ALLOWED WITHIN WETLANDS OR STREAMS. ALL TEMPORARY CROSSINGS OF WETLANDS AND STREAMS BY EQUIPMENT SHALL BE ACCOMPLISHED USING MATTING AND ALL JURISDICTIONAL IMPACTS SHALL BE AVOIDED DURING INSTALLATION, USE, AND REMOVAL.
9. ISOLATED TREES MAY EXIST OUTSIDE OF SPECIFIED TREE CLEARING LOCATIONS BUT WITHIN THE LIMIT OF DISTURBANCE (LOD). THE CONTRACTOR IS TO REVIEW THE ENTIRE LIMITS OF DISTURBANCE TO ENSURE ALL TREES AND SHRUBS ARE REMOVED. ISOLATED TREES ARE ANTICIPATED TO BE HAND FELLED AND LEFT IN PLACE UNLESS EQUIPMENT IS ABLE TO ACCESS THESE LOCATIONS WITHOUT ADVERSE IMPACT.
10. IN THE EVENT THAT ARCHAEOLOGICAL MATERIALS, HUMAN REMAINS, OR EVIDENCE OF HUMAN BURIALS ARE ENCOUNTERED DURING CONSTRUCTION, ALL WORK IN THE VICINITY OF THE FIND WILL BE IMMEDIATELY HALTED AND THE UNANTICIPATED DISCOVERY PLAN WILL BE IMPLEMENTED.



PREPARED FOR:
Hoffman Falls Wind LLC
 90 State Street
 Albany, NY 12207

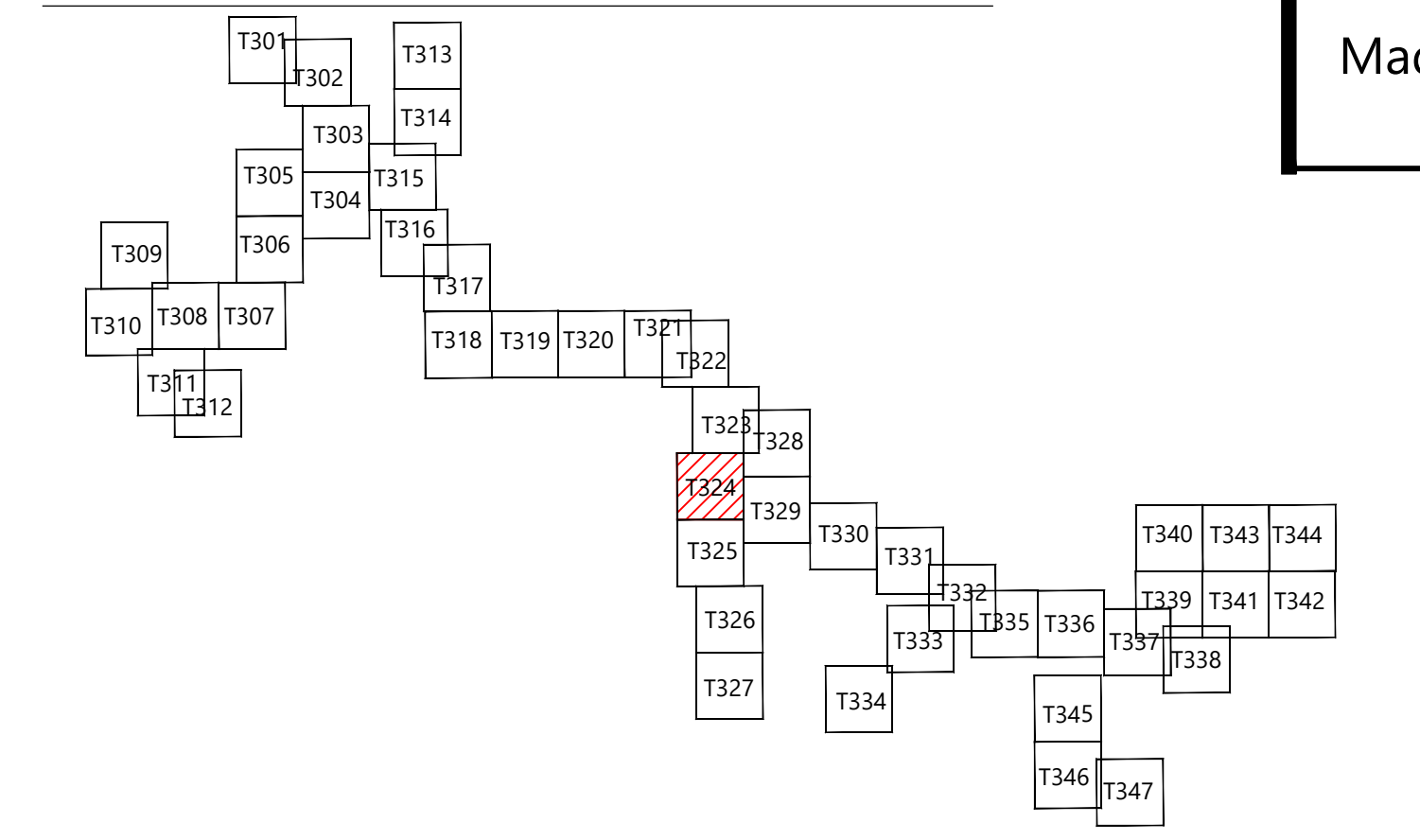
REVISIONS:

#	DATE	COMMENT	BY	CHK	APR
0	01/30/2026	IFC SET	NA	HC	AL
1	04/15/2026	ORES COMMENTS	NA	HC	AL



Hoffman Falls Wind Project
 Madison County, New York

KEY MAP:



Tree Clearing - 12

ISSUE FOR CONSTRUCTION

DATE: 04/15/2026 REV:
 SHEET: T324 1



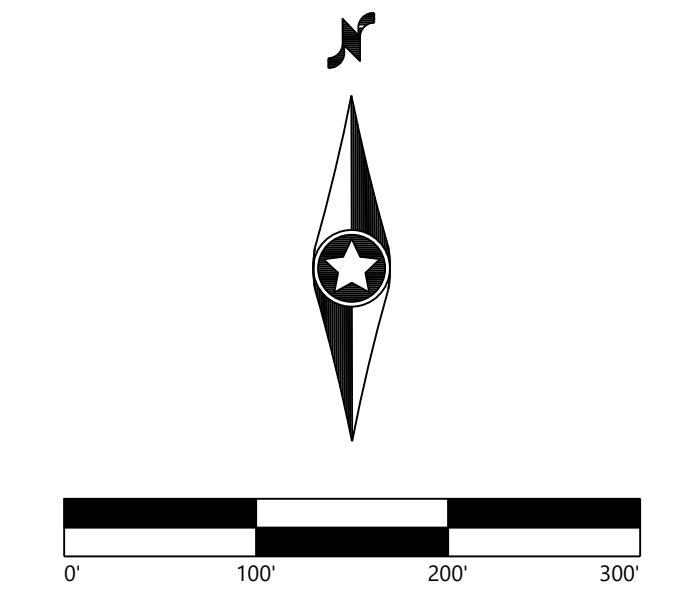
PREPARED FOR:

Hoffman Falls Wind LLC

90 State Street
 Albany, NY 12207

REVISIONS:

#	DATE	COMMENT	BY	CHK	APR
0	01/30/2026	IFC SET	NA	HC	AL
1	04/15/2026	ORES COMMENTS	NA	HC	AL



**Hoffman Falls
 Wind Project**

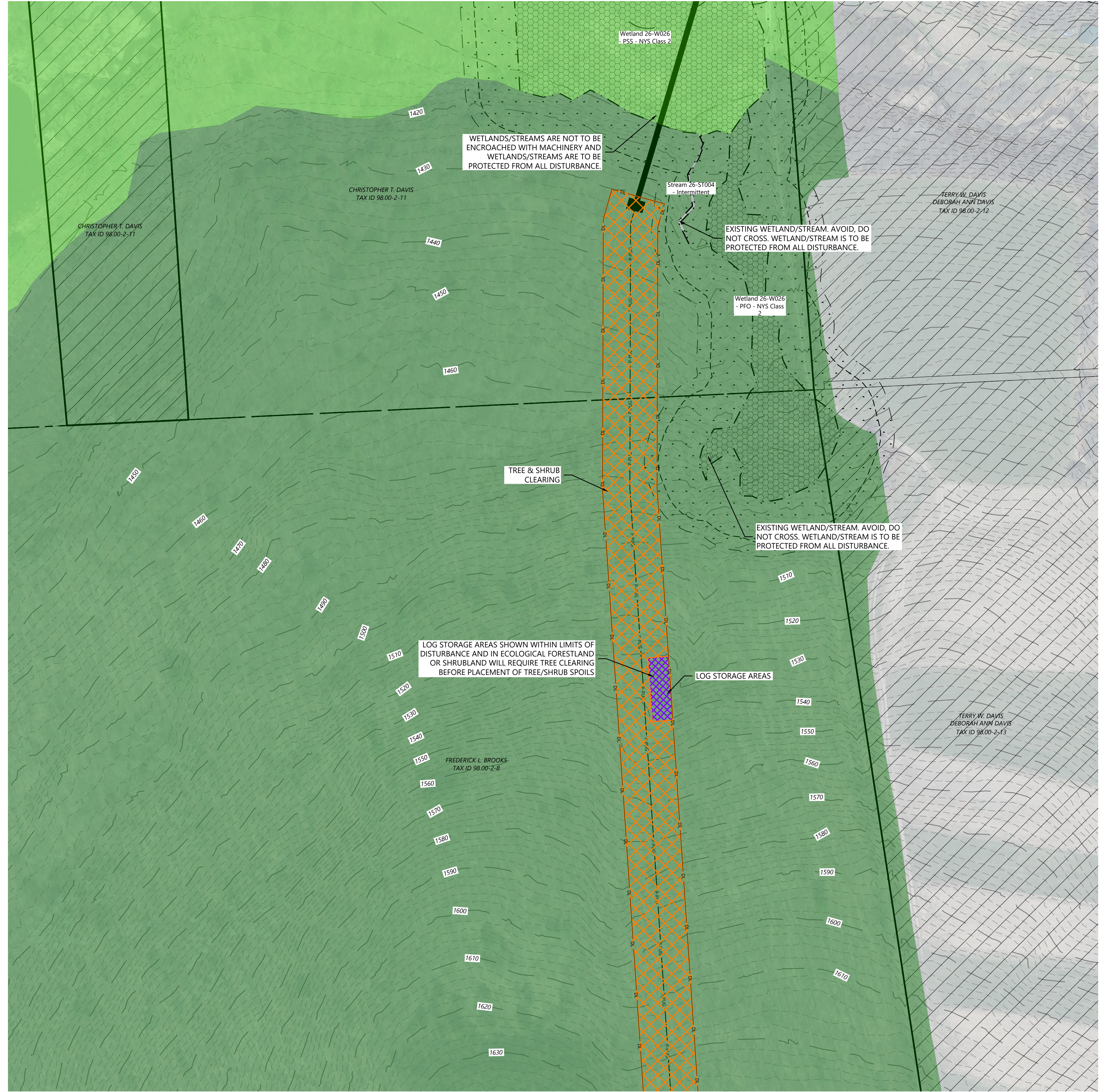
Madison County, New York

Tree Clearing - 13

ISSUE FOR CONSTRUCTION

DATE: 04/15/2026

SHEET: T325 1



LEGEND:

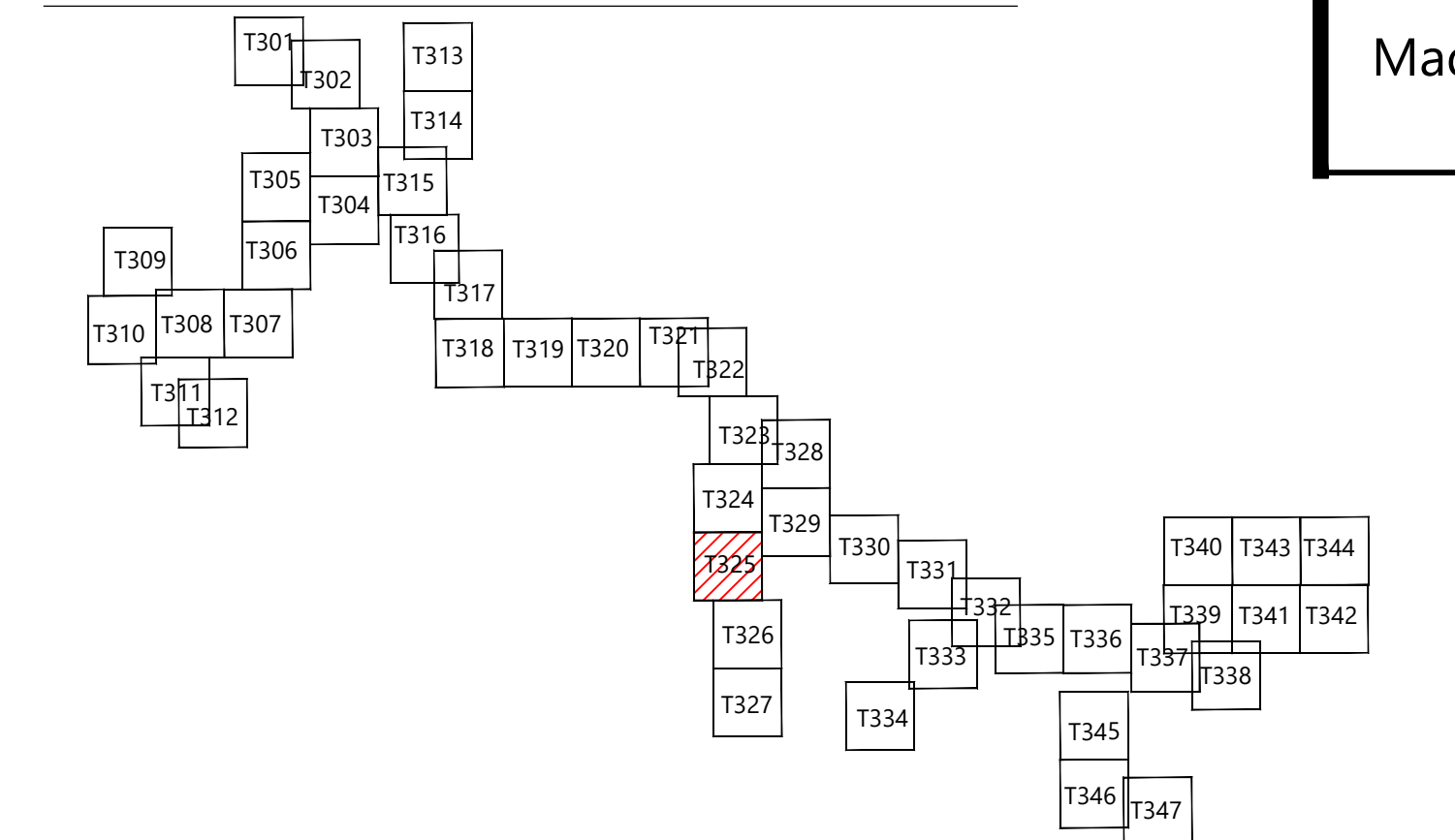
- T-#** TURBINE LOCATION
- ADLS-#** ADLS TOWER
- M-#** PERMANENT MET TOWER
- PERMANENT ACCESS ROAD
- TEMPORARY INTERSECTION
- UNDERGROUND COLLECTION AND COMMUNICATION
- PROPOSED JUNCTION BOX
- BORE LOCATION
- DISTURBANCE LIMITS
- GRADING LIMITS
- EXISTING ROADS
- PARCEL LINES (BOUNDARY SURVEY)
- NON-PARTICIPATING LAND
- EX. INDEX CONTOUR
- EX. INTERVAL CONTOUR
- PROPOSED INDEX CONTOUR
- PROPOSED INTERVAL CONTOUR
- EX. GAS PIPELINE
- EX. OVERHEAD POWER
- EX. UTILITY EASEMENT
- EX. RIGHT OF WAY
- EX. STREAM CHANNEL
- PROTECTION FENCE
- EX. WATER WELL
- EX. CULVERTS
- EX. WETLAND
- 50-FT NYS-REGULATED STREAM BUFFER
- 75-FT NYS-REGULATED WETLAND BUFFER
- 100-FT NYS-REGULATED WETLAND BUFFER
- EX. ENVIRONMENTALLY SENSITIVE AREA
- FEMA MAPPED FLOOD HAZARD AREA
- PROPOSED FACILITIES
- APPROXIMATE PROPOSED SPOILS AND LOG STORAGE, TEMPORARY
- PROPOSED TEMPORARY CROSSING

TREE CLEARING LEGEND:

- FORESTLAND
- SHRUBLAND
- TREE & SHRUB CLEARING

- AT LEAST TWO WEEKS BEFORE TREE CLEARING OR GROUND DISTURBING ACTIVITIES, FLAG THE LIMITS OF DISTURBANCE, THE BOUNDARIES OF ANY DELINEATED WETLANDS, AND WATERBODIES OR STREAMS IN THE DISTURBANCE LIMITS ALL ON OR OFF RIGHT-OF-WAY ACCESS ROADS, LIMITS OF CLEARING AND OTHER AREAS NEEDED FOR CONSTRUCTION, INCLUDING, BUT NOT LIMITED TO, TURBINE WORK AREAS, PROPOSED INFILTRATION AREAS FOR POST CONSTRUCTION STORMWATER MANAGEMENT, AND LAYDOWN AND STORAGE AREAS. IN ADDITION, ENVIRONMENTALLY SENSITIVE AREAS SHALL BE SURROUNDED WITH CONSTRUCTION FENCING AND A SIGN STATING RESTRICTED ACCESS.
- SIGNIFICANT GROUND DISTURBANCE IS DEFINED AS EXCAVATION OR GRADING MORE THAN 6 INCHES DEEP, GRUBBING OR STUMP REMOVAL, AND TRENCHING WIDER THAN 3 FEET.
- TREES WILL BE FELLED AND CUT TO APPROXIMATE LENGTHS WITHIN THE LIMITS OF DISTURBANCE IN PROXIMITY TO THE PROPOSED LOG STORAGE AREA. FELLED TIMBER WILL BE STACKED IN PLACE UNTIL SUFFICIENT SPACE HAS BEEN CLEARED TO ESTABLISH IDENTIFIED LOG STORAGE AREAS. APPROXIMATE LOG STORAGE AREAS WILL BE FINALIZED BASED ON FIELD CONDITIONS.
- THE LIMITS OF TREE AND SHRUB CLEARING ARE BASED ON THE ECOLOGICAL COMMUNITY DATA DISCUSSED IN EXHIBIT 11 OF ARTICLE VIII APPLICATION. SEE EXHIBIT 11 FOR FURTHER DISCUSSION OF THE ECOLOGICAL COMMUNITY TYPES AND FACILITY'S IMPACTS TO FORESTLAND AND SHRUBLAND.
- LOCATIONS OF LOG STOCKPILE AREAS MAY BE MODIFIED BASED ON FIELD CONDITIONS IN COORDINATION WITH ENVIRONMENTAL MONITOR (EM).
- LOW IMPACT VEHICLES ONLY IN ACTIVE AGRICULTURAL AREAS. IF EXCESSIVE RUTTING OR SOIL COMPACTION ABOVE 1.5 INCHES IS OBSERVED, TEMPORARY TIMBER MATTING SHALL BE UTILIZED.
- TREES AND OTHER WOODY VEGETATION WITHIN WETLANDS OR STREAMS ARE TO BE HANDCUT. NO GRUBBING OR STUMP REMOVAL ALLOWED AT ANY STAGE OF CONSTRUCTION.
- WETLANDS AND STREAMS ARE TO BE PROTECTED FROM ALL DISTURBANCE. NO MECHANICAL EQUIPMENT IS ALLOWED WITHIN WETLANDS OR STREAMS. ALL TEMPORARY CROSSINGS OF WETLANDS AND STREAMS BY EQUIPMENT SHALL BE ACCOMPLISHED USING MATTING AND ALL JURISDICTIONAL IMPACTS SHALL BE AVOIDED DURING INSTALLATION, USE, AND REMOVAL.
- ISOLATED TREES MAY EXIST OUTSIDE OF SPECIFIED TREE CLEARING LOCATIONS BUT WITHIN THE LIMIT OF DISTURBANCE (LOD). THE CONTRACTOR IS TO REVIEW THE ENTIRE LIMITS OF DISTURBANCE TO ENSURE ALL TREES AND SHRUBS ARE REMOVED. ISOLATED TREES ARE ANTICIPATED TO BE HAND FELLED AND LEFT IN PLACE UNLESS EQUIPMENT IS ABLE TO ACCESS THESE LOCATIONS WITHOUT ADVERSE IMPACT.
- IN THE EVENT THAT ARCHAEOLOGICAL MATERIALS, HUMAN REMAINS, OR EVIDENCE OF HUMAN BURIALS ARE ENCOUNTERED DURING CONSTRUCTION, ALL WORK IN THE VICINITY OF THE FIND WILL BE IMMEDIATELY HALTED AND THE UNANTICIPATED DISCOVERY PLAN WILL BE IMPLEMENTED.

KEY MAP:





PREPARED FOR:

Hoffman Falls Wind LLC

90 State Street
 Albany, NY 12207

REVISIONS:

#	DATE	COMMENT	BY	CHK	APR
0	01/30/2026	IFC SET	NA	HC	AL
1	04/15/2026	ORES COMMENTS	NA	HC	AL



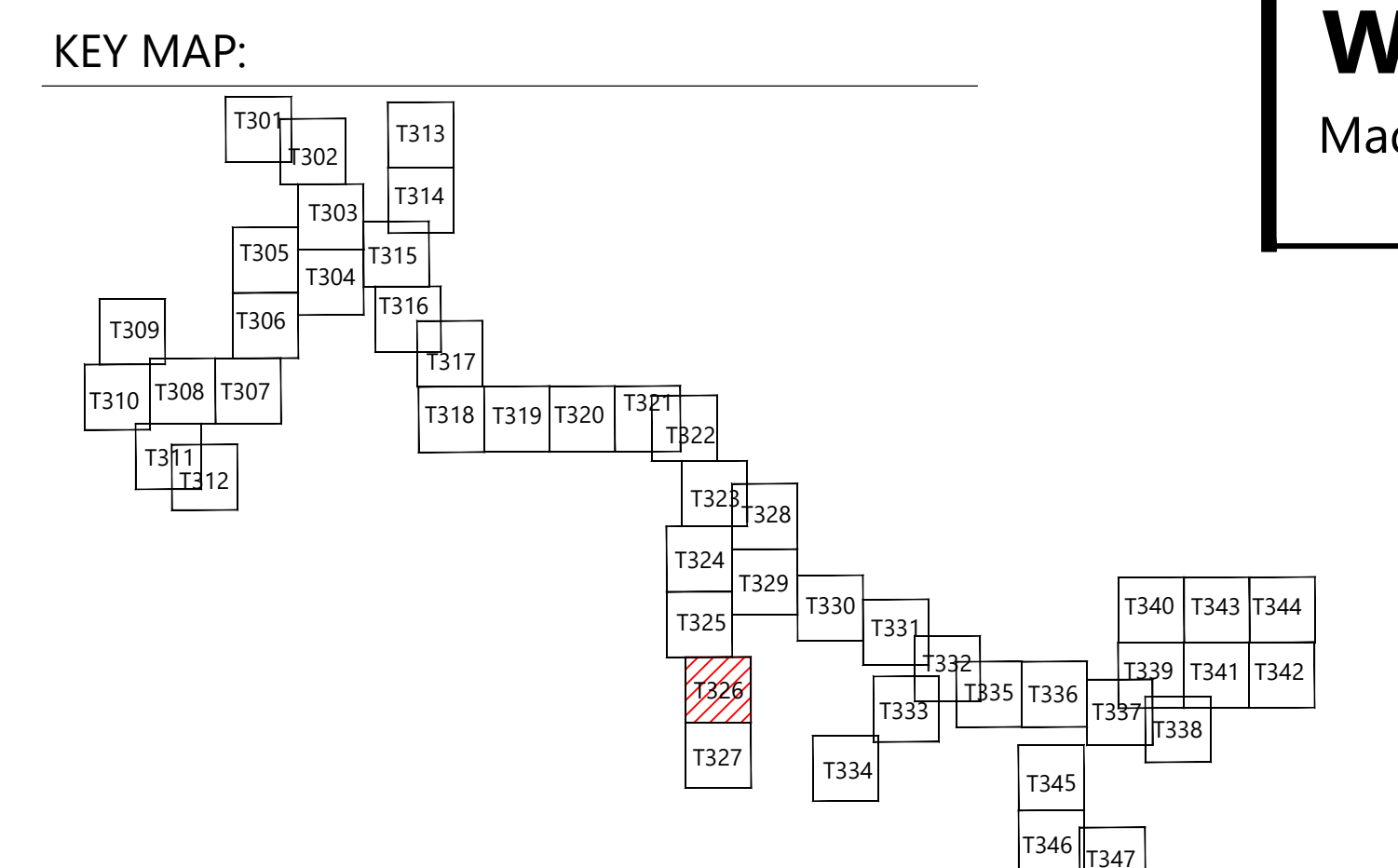
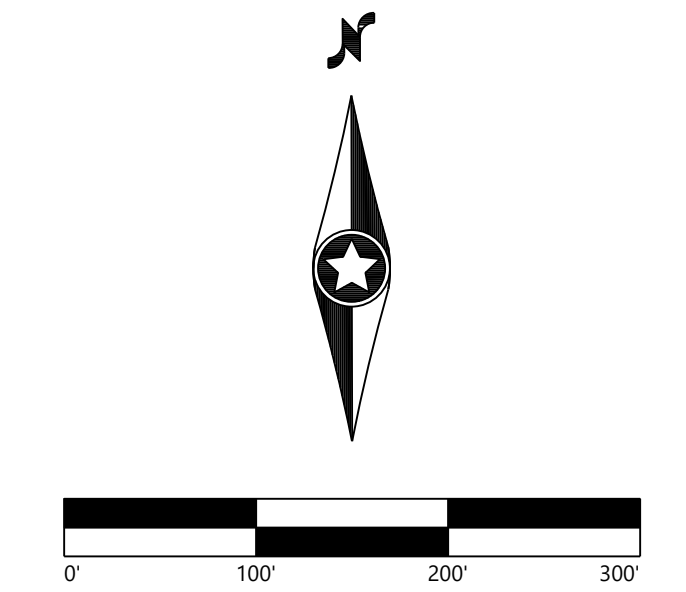
LEGEND:

T-#	TURBINE LOCATION		EX. UTILITY EASEMENT
ADLS-#	ADLS TOWER		EX. RIGHT OF WAY
M-#	PERMANENT MET TOWER		EX. STREAM CHANNEL
	PERMANENT ACCESS ROAD		PROTECTION FENCE
	TEMPORARY INTERSECTION		EX. WATER WELL
	UNDERGROUND COLLECTION AND COMMUNICATION		EX. CULVERTS
	PROPOSED JUNCTION BOX		EX. WETLAND
	BORE LOCATION		50-FT NYS-REGULATED STREAM BUFFER
	DISTURBANCE LIMITS		75-FT NYS-REGULATED WETLAND BUFFER
	GRADING LIMITS		100-FT NYS-REGULATED WETLAND BUFFER
	EXISTING ROADS		FEMA MAPPED FLOOD HAZARD AREA
	PARCEL LINES (BOUNDARY SURVEY)		PROPOSED FACILITIES
	NON-PARTICIPATING LAND		APPROXIMATE PROPOSED SPOILS AND LOG STORAGE, TEMPORARY
	EX. INDEX CONTOUR		PROPOSED TEMPORARY CROSSING
	EX. INTERVAL CONTOUR		
	PROPOSED INDEX CONTOUR		
	PROPOSED INTERVAL CONTOUR		
	EX. GAS PIPELINE		
	EX. OVERHEAD POWER		

TREE CLEARING LEGEND:

	FORESTLAND		SHRUBLAND		TREE & SHRUB CLEARING
--	------------	--	-----------	--	-----------------------

- AT LEAST TWO WEEKS BEFORE TREE CLEARING OR GROUND DISTURBING ACTIVITIES, FLAG THE LIMITS OF DISTURBANCE, THE BOUNDARIES OF ANY DELINEATED WETLANDS, AND WATERBODIES OR STREAMS IN THE DISTURBANCE LIMITS ALL ON OR OFF RIGHT-OF-WAY ACCESS ROADS, LIMITS OF CLEARING AND OTHER AREAS NEEDED FOR CONSTRUCTION, INCLUDING, BUT NOT LIMITED TO, TURBINE WORK AREAS, PROPOSED INFILTRATION AREAS FOR POST CONSTRUCTION STORMWATER MANAGEMENT, AND LAYDOWN AND STORAGE AREAS. IN ADDITION, ENVIRONMENTALLY SENSITIVE AREAS SHALL BE SURROUNDED WITH CONSTRUCTION FENCING AND A SIGN STATING RESTRICTED ACCESS.
- SIGNIFICANT GROUND DISTURBANCE IS DEFINED AS EXCAVATION OR GRADING MORE THAN 6 INCHES DEEP, GRUBBING OR STUMP REMOVAL, AND TRENCHING WIDER THAN 3 FEET.
- TREES WILL BE FELLED AND CUT TO APPROXIMATE LENGTHS WITHIN THE LIMITS OF DISTURBANCE IN PROXIMITY TO THE PROPOSED LOG STORAGE AREA. FELLED TIMBER WILL BE STACKED IN PLACE UNTIL SUFFICIENT SPACE HAS BEEN CLEARED TO ESTABLISH IDENTIFIED LOG STORAGE AREAS. APPROXIMATE LOG STORAGE AREAS WILL BE FINALIZED BASED ON FIELD CONDITIONS.
- THE LIMITS OF TREE AND SHRUB CLEARING ARE BASED ON THE ECOLOGICAL COMMUNITY DATA DISCUSSED IN EXHIBIT 11 OF ARTICLE VIII APPLICATION. SEE EXHIBIT 11 FOR FURTHER DISCUSSION OF THE ECOLOGICAL COMMUNITY TYPES AND FACILITY'S IMPACTS TO FORESTLAND AND SHRUBLAND.
- LOCATIONS OF LOG STOCKPILE AREAS MAY BE MODIFIED BASED ON FIELD CONDITIONS IN COORDINATION WITH ENVIRONMENTAL MONITOR (EM).
- LOW IMPACT VEHICLES ONLY IN ACTIVE AGRICULTURAL AREAS. IF EXCESSIVE RUTTING OR SOIL COMPACTION ABOVE 1.5 INCHES IS OBSERVED, TEMPORARY TIMBER MATTING SHALL BE UTILIZED.
- TREES AND OTHER WOODY VEGETATION WITHIN WETLANDS OR STREAMS ARE TO BE HANDCUT. NO GRUBBING OR STUMP REMOVAL ALLOWED AT ANY STAGE OF CONSTRUCTION.
- WETLANDS AND STREAMS ARE TO BE PROTECTED FROM ALL DISTURBANCE. NO MECHANICAL EQUIPMENT IS ALLOWED WITHIN WETLANDS OR STREAMS. ALL TEMPORARY CROSSINGS OF WETLANDS AND STREAMS BY EQUIPMENT SHALL BE ACCOMPLISHED USING MATTING AND ALL JURISDICTIONAL IMPACTS SHALL BE AVOIDED DURING INSTALLATION, USE, AND REMOVAL.
- ISOLATED TREES MAY EXIST OUTSIDE OF SPECIFIED TREE CLEARING LOCATIONS BUT WITHIN THE LIMIT OF DISTURBANCE (LOD). THE CONTRACTOR IS TO REVIEW THE ENTIRE LIMITS OF DISTURBANCE TO ENSURE ALL TREES AND SHRUBS ARE REMOVED. ISOLATED TREES ARE ANTICIPATED TO BE HAND FELLED AND LEFT IN PLACE UNLESS EQUIPMENT IS ABLE TO ACCESS THESE LOCATIONS WITHOUT ADVERSE IMPACT.
- IN THE EVENT THAT ARCHAEOLOGICAL MATERIALS, HUMAN REMAINS, OR EVIDENCE OF HUMAN BURIALS ARE ENCOUNTERED DURING CONSTRUCTION, ALL WORK IN THE VICINITY OF THE FIND WILL BE IMMEDIATELY HALTED AND THE UNANTICIPATED DISCOVERY PLAN WILL BE IMPLEMENTED.

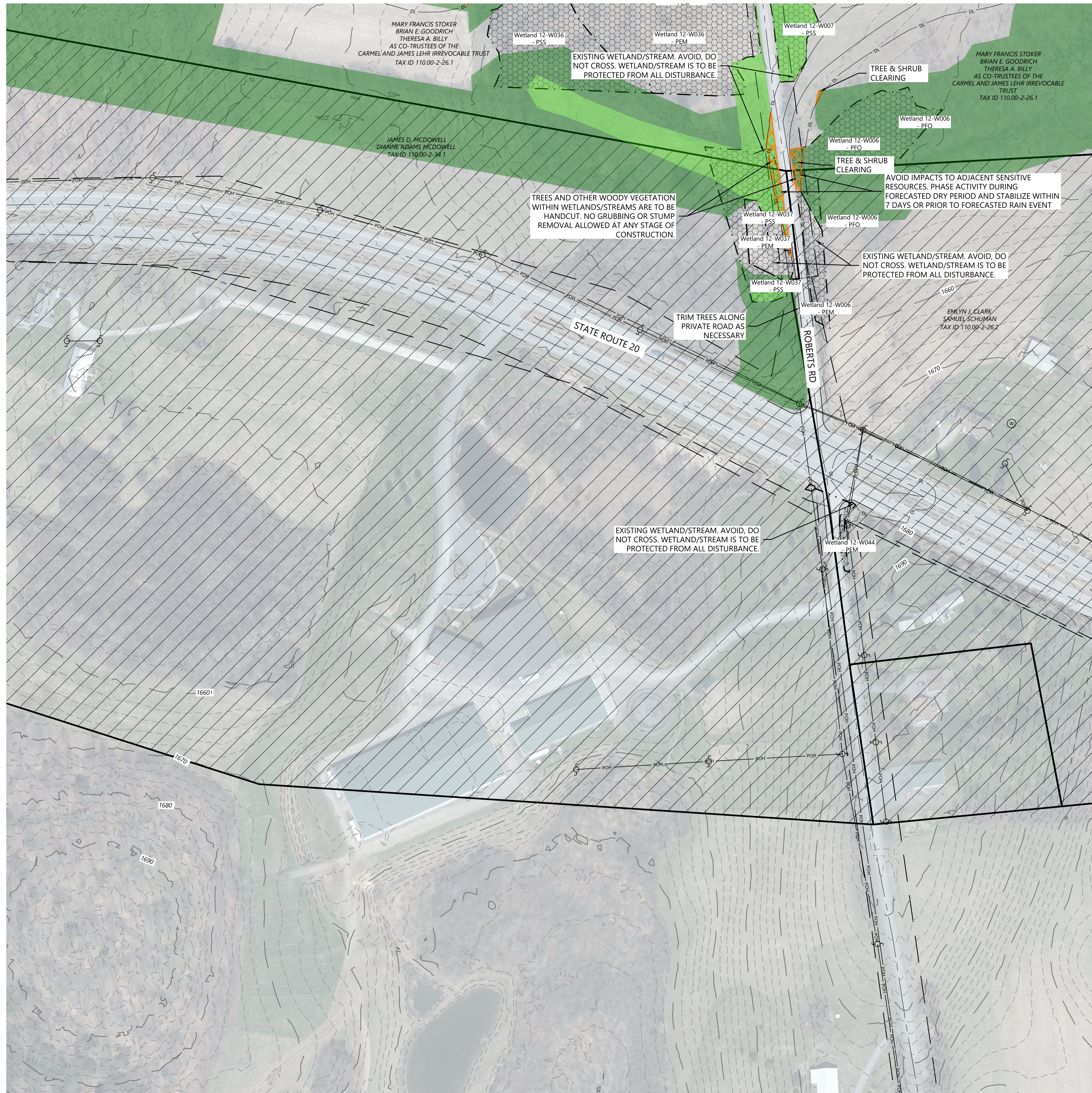


Hoffman Falls Wind Project
 Madison County, New York

Tree Clearing - T-13

ISSUE FOR CONSTRUCTION

DATE: 04/15/2026 REV: 1
 SHEET: T326 1



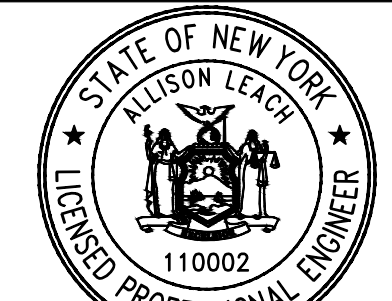
LEGEND:

- T-#** TURBINE LOCATION
- ADLS-#** ADLS TOWER
- M-#** PERMANENT MET TOWER
- PERMANENT ACCESS ROAD
- TEMPORARY INTERSECTION
- UNDERGROUND COLLECTION AND COMMUNICATION
- PROPOSED JUNCTION BOX
- BORE LOCATION
- DISTURBANCE LIMITS
- GRADING LIMITS
- EXISTING ROADS
- PARCEL LINES (BOUNDARY SURVEY)
- NON-PARTICIPATING LAND
- EX. INDEX CONTOUR
- EX. INTERVAL CONTOUR
- PROPOSED INDEX CONTOUR
- PROPOSED INTERVAL CONTOUR
- EX. GAS PIPELINE
- EX. OVERHEAD POWER
- EX. UTILITY EASEMENT
- EX. RIGHT OF WAY
- EX. STREAM CHANNEL
- PROTECTION FENCE
- EX. WATER WELL
- EX. CULVERTS
- EX. WETLAND
- 50-FT NYS-REGULATED STREAM BUFFER
- 75-FT NYS-REGULATED WETLAND BUFFER
- 100-FT NYS-REGULATED WETLAND BUFFER
- EX. ENVIRONMENTALLY SENSITIVE AREA
- FEMA MAPPED FLOOD HAZARD AREA
- PROPOSED FACILITIES
- APPROXIMATE PROPOSED SPOILS AND LOG STORAGE, TEMPORARY
- PROPOSED TEMPORARY CROSSING

TREE CLEARING LEGEND:

- FORESTLAND
- SHRUBLAND
- TREE & SHRUB CLEARING

1. AT LEAST TWO WEEKS BEFORE TREE CLEARING OR GROUND DISTURBING ACTIVITIES, FLAG THE LIMITS OF DISTURBANCE, THE BOUNDARIES OF ANY DELINEATED WETLANDS, AND WATERBODIES OR STREAMS IN THE DISTURBANCE LIMITS ALL ON OR OFF RIGHT-OF-WAY ACCESS ROADS, LIMITS OF CLEARING AND OTHER AREAS NEEDED FOR CONSTRUCTION, INCLUDING, BUT NOT LIMITED TO, TURBINE WORK AREAS, PROPOSED INFILTRATION AREAS FOR POST CONSTRUCTION STORMWATER MANAGEMENT, AND LAYDOWN AND STORAGE AREAS. IN ADDITION, ENVIRONMENTALLY SENSITIVE AREAS SHALL BE SURROUNDED WITH CONSTRUCTION FENCING AND A SIGN STATING RESTRICTED ACCESS.
2. SIGNIFICANT GROUND DISTURBANCE IS DEFINED AS EXCAVATION OR GRADING MORE THAN 6 INCHES DEEP, GRUBBING OR STUMP REMOVAL, AND TRENCHING WIDER THAN 3 FEET.
3. TREES WILL BE FELLED AND CUT TO APPROXIMATE LENGTHS WITHIN THE LIMITS OF DISTURBANCE IN PROXIMITY TO THE PROPOSED LOG STORAGE AREA. FELLED TIMBER WILL BE STACKED IN PLACE UNTIL SUFFICIENT SPACE HAS BEEN CLEARED TO ESTABLISH IDENTIFIED LOG STORAGE AREAS. APPROXIMATE LOG STORAGE AREAS WILL BE FINALIZED BASED ON FIELD CONDITIONS.
4. THE LIMITS OF TREE AND SHRUB CLEARING ARE BASED ON THE ECOLOGICAL COMMUNITY DATA DISCUSSED IN EXHIBIT 11 OF ARTICLE VIII APPLICATION. SEE EXHIBIT 11 FOR FURTHER DISCUSSION OF THE ECOLOGICAL COMMUNITY TYPES AND FACILITY'S IMPACTS TO FORESTLAND AND SHRUBLAND.
5. LOCATIONS OF LOG STOCKPILE AREAS MAY BE MODIFIED BASED ON FIELD CONDITIONS IN COORDINATION WITH ENVIRONMENTAL MONITOR (EM).
6. LOW IMPACT VEHICLES ONLY IN ACTIVE AGRICULTURAL AREAS. IF EXCESSIVE RUTTING OR SOIL COMPACTION ABOVE 1.5 INCHES IS OBSERVED, TEMPORARY TIMBER MATTING SHALL BE UTILIZED.
7. TREES AND OTHER WOODY VEGETATION WITHIN WETLANDS OR STREAMS ARE TO BE HANDCUT. NO GRUBBING OR STUMP REMOVAL ALLOWED AT ANY STAGE OF CONSTRUCTION.
8. WETLANDS AND STREAMS ARE TO BE PROTECTED FROM ALL DISTURBANCE. NO MECHANICAL EQUIPMENT IS ALLOWED WITHIN WETLANDS OR STREAMS. ALL TEMPORARY CROSSINGS OF WETLANDS AND STREAMS BY EQUIPMENT SHALL BE ACCOMPLISHED USING MATTING AND ALL JURISDICTIONAL IMPACTS SHALL BE AVOIDED DURING INSTALLATION, USE, AND REMOVAL.
9. ISOLATED TREES MAY EXIST OUTSIDE OF SPECIFIED TREE CLEARING LOCATIONS BUT WITHIN THE LIMIT OF DISTURBANCE (LOD). THE CONTRACTOR IS TO REVIEW THE ENTIRE LIMITS OF DISTURBANCE TO ENSURE ALL TREES AND SHRUBS ARE REMOVED. ISOLATED TREES ARE ANTICIPATED TO BE HAND FELLED AND LEFT IN PLACE UNLESS EQUIPMENT IS ABLE TO ACCESS THESE LOCATIONS WITHOUT ADVERSE IMPACT.
10. IN THE EVENT THAT ARCHAEOLOGICAL MATERIALS, HUMAN REMAINS, OR EVIDENCE OF HUMAN BURIALS ARE ENCOUNTERED DURING CONSTRUCTION, ALL WORK IN THE VICINITY OF THE FIND WILL BE IMMEDIATELY HALTED AND THE UNANTICIPATED DISCOVERY PLAN WILL BE IMPLEMENTED.



Alison Leach
 04/15/2026

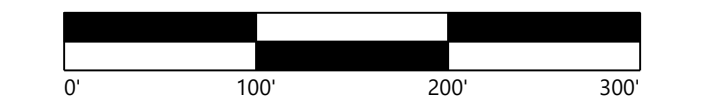
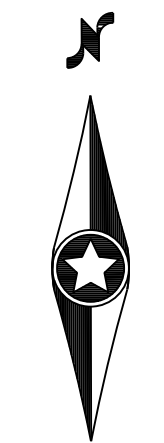
PREPARED FOR:

Hoffman Falls Wind LLC

90 State Street
 Albany, NY 12207

REVISIONS:

#	DATE	COMMENT	BY	CHK	APR
0	01/30/2026	IFC SET	NA	HC	AL
1	04/15/2026	ORES COMMENTS	NA	HC	AL

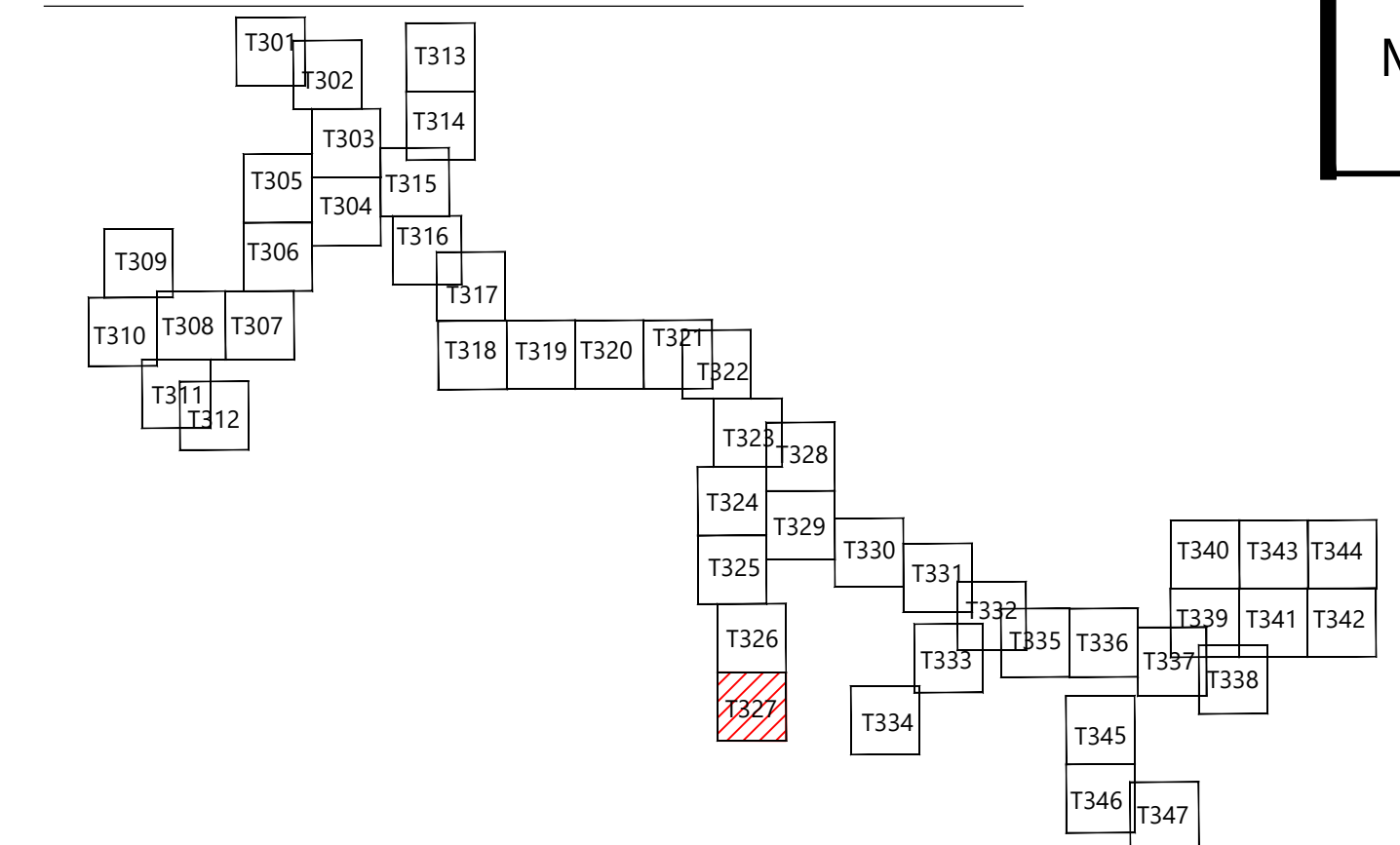


Hoffman Falls Wind Project

Madison County, New York

Tree Clearing - 14

KEY MAP:



ISSUE FOR CONSTRUCTION

DATE: 04/15/2026

SHEET: T327 1



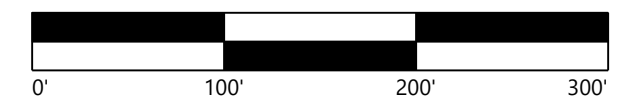
PREPARED FOR:

Hoffman Falls Wind LLC

90 State Street
 Albany, NY 12207

REVISIONS:

#	DATE	COMMENT	BY	CHK	APR
0	01/30/2026	IFC SET	NA	HC	AL
1	04/15/2026	ORES COMMENTS	NA	HC	AL



**Hoffman Falls
 Wind Project**

Madison County, New York

Tree Clearing - 15

ISSUE FOR CONSTRUCTION

DATE: 04/15/2026

SHEET: T328 1

LEGEND:

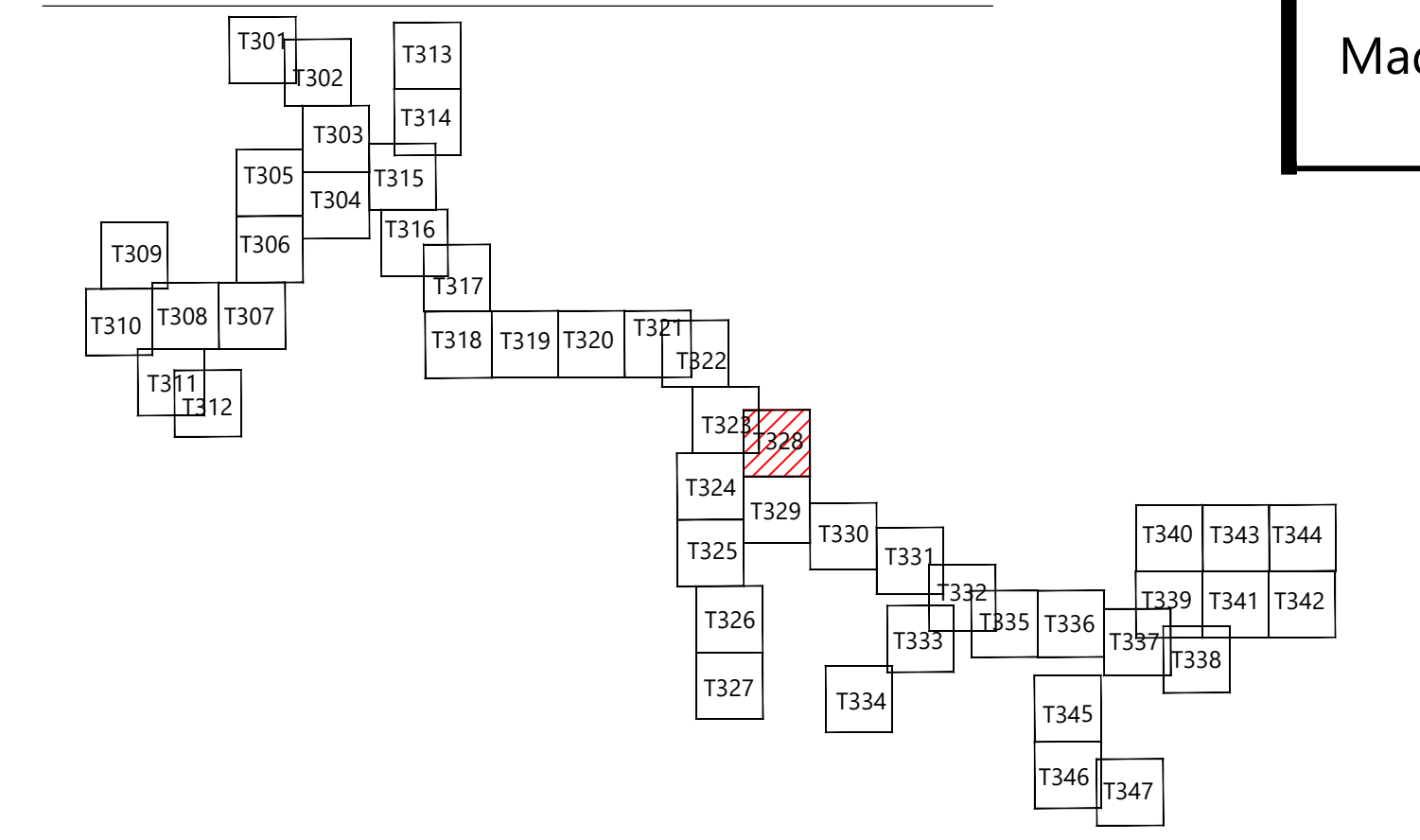
T-#	TURBINE LOCATION	EX. UTILITY EASEMENT
ADLS-#	ADLS TOWER	EX. RIGHT OF WAY
M-#	PERMANENT MET TOWER	EX. STREAM CHANNEL
PERMANENT ACCESS ROAD		PROTECTION FENCE
TEMPORARY INTERSECTION		EX. WATER WELL
UNDERGROUND COLLECTION AND COMMUNICATION		EX. CULVERTS
PROPOSED JUNCTION BOX		EX. WETLAND
BORE LOCATION		50-FT NYS-REGULATED STREAM BUFFER
DL	DISTURBANCE LIMITS	75-FT NYS-REGULATED WETLAND BUFFER
GL	GRADING LIMITS	100-FT NYS-REGULATED WETLAND BUFFER
EXISTING ROADS		EX. ENVIRONMENTALLY SENSITIVE AREA
PARCEL LINES (BOUNDARY SURVEY)		FEMA MAPPED FLOOD HAZARD AREA
NON-PARTICIPATING LAND		PROPOSED FACILITIES
900	EX. INDEX CONTOUR	APPROXIMATE PROPOSED SPOILS AND LOG STORAGE, TEMPORARY
900	EX. INTERVAL CONTOUR	PROPOSED TEMPORARY CROSSING
902	PROPOSED INDEX CONTOUR	
GAS	PROPOSED INTERVAL CONTOUR	
POH	EX. GAS PIPELINE	
POH	EX. OVERHEAD POWER	

TREE CLEARING LEGEND:

FORESTLAND	SHRUBLAND	TREE & SHRUB CLEARING
------------	-----------	-----------------------

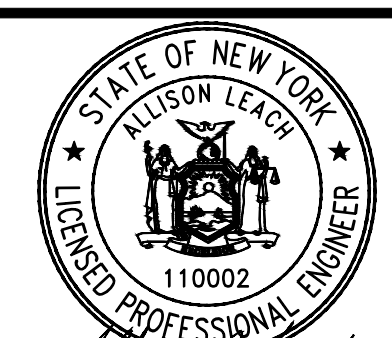
- AT LEAST TWO WEEKS BEFORE TREE CLEARING OR GROUND DISTURBING ACTIVITIES, FLAG THE LIMITS OF DISTURBANCE, THE BOUNDARIES OF ANY DELINEATED WETLANDS, AND WATERBODIES OR STREAMS IN THE DISTURBANCE LIMITS ALL ON OR OFF RIGHT-OF-WAY ACCESS ROADS, LIMITS OF CLEARING AND OTHER AREAS NEEDED FOR CONSTRUCTION, INCLUDING, BUT NOT LIMITED TO, TURBINE WORK AREAS, PROPOSED INFILTRATION AREAS FOR POST CONSTRUCTION STORMWATER MANAGEMENT, AND LAYDOWN AND STORAGE AREAS. IN ADDITION, ENVIRONMENTALLY SENSITIVE AREAS SHALL BE SURROUNDED WITH CONSTRUCTION FENCING AND A SIGN STATING RESTRICTED ACCESS.
- SIGNIFICANT GROUND DISTURBANCE IS DEFINED AS EXCAVATION OR GRADING MORE THAN 6 INCHES DEEP, GRUBBING OR STUMP REMOVAL, AND TRENCHING WIDER THAN 3 FEET.
- TREES WILL BE FELLED AND CUT TO APPROXIMATE LENGTHS WITHIN THE LIMITS OF DISTURBANCE IN PROXIMITY TO THE PROPOSED LOG STORAGE AREA. FELLED TIMBER WILL BE STACKED IN PLACE UNTIL SUFFICIENT SPACE HAS BEEN CLEARED TO ESTABLISH IDENTIFIED LOG STORAGE AREAS. APPROXIMATE LOG STORAGE AREAS WILL BE FINALIZED BASED ON FIELD CONDITIONS.
- THE LIMITS OF TREE AND SHRUB CLEARING ARE BASED ON THE ECOLOGICAL COMMUNITY DATA DISCUSSED IN EXHIBIT 11 OF ARTICLE VIII APPLICATION. SEE EXHIBIT 11 FOR FURTHER DISCUSSION OF THE ECOLOGICAL COMMUNITY TYPES AND FACILITY'S IMPACTS TO FORESTLAND AND SHRUBLAND.
- LOCATIONS OF LOG STOCKPILE AREAS MAY BE MODIFIED BASED ON FIELD CONDITIONS IN COORDINATION WITH ENVIRONMENTAL MONITOR (EM).
- LOW IMPACT VEHICLES ONLY IN ACTIVE AGRICULTURAL AREAS. IF EXCESSIVE RUTTING OR SOIL COMPACTION ABOVE 1.5 INCHES IS OBSERVED, TEMPORARY TIMBER MATTING SHALL BE UTILIZED.
- TREES AND OTHER WOODY VEGETATION WITHIN WETLANDS OR STREAMS ARE TO BE HANDCUT. NO GRUBBING OR STUMP REMOVAL ALLOWED AT ANY STAGE OF CONSTRUCTION.
- WETLANDS AND STREAMS ARE TO BE PROTECTED FROM ALL DISTURBANCE. NO MECHANICAL EQUIPMENT IS ALLOWED WITHIN WETLANDS OR STREAMS. ALL TEMPORARY CROSSINGS OF WETLANDS AND STREAMS BY EQUIPMENT SHALL BE ACCOMPLISHED USING MATTING AND ALL JURISDICTIONAL IMPACTS SHALL BE AVOIDED DURING INSTALLATION, USE, AND REMOVAL.
- ISOLATED TREES MAY EXIST OUTSIDE OF SPECIFIED TREE CLEARING LOCATIONS BUT WITHIN THE LIMIT OF DISTURBANCE (LOD). THE CONTRACTOR IS TO REVIEW THE ENTIRE LIMITS OF DISTURBANCE TO ENSURE ALL TREES AND SHRUBS ARE REMOVED. ISOLATED TREES ARE ANTICIPATED TO BE HAND FELLED AND LEFT IN PLACE UNLESS EQUIPMENT IS ABLE TO ACCESS THESE LOCATIONS WITHOUT ADVERSE IMPACT.
- IN THE EVENT THAT ARCHAEOLOGICAL MATERIALS, HUMAN REMAINS, OR EVIDENCE OF HUMAN BURIALS ARE ENCOUNTERED DURING CONSTRUCTION, ALL WORK IN THE VICINITY OF THE FIND WILL BE IMMEDIATELY HALTED AND THE UNANTICIPATED DISCOVERY PLAN WILL BE IMPLEMENTED.

KEY MAP:



WETLANDS/STREAMS ARE NOT TO BE ENCROACHED WITH MACHINERY AND WETLANDS/STREAMS ARE TO BE PROTECTED FROM ALL DISTURBANCE.
 EXISTING WETLAND/STREAM. AVOID, DO NOT CROSS. WETLAND/STREAM IS TO BE PROTECTED FROM ALL DISTURBANCE.

Wetland 23-W010 - PSS



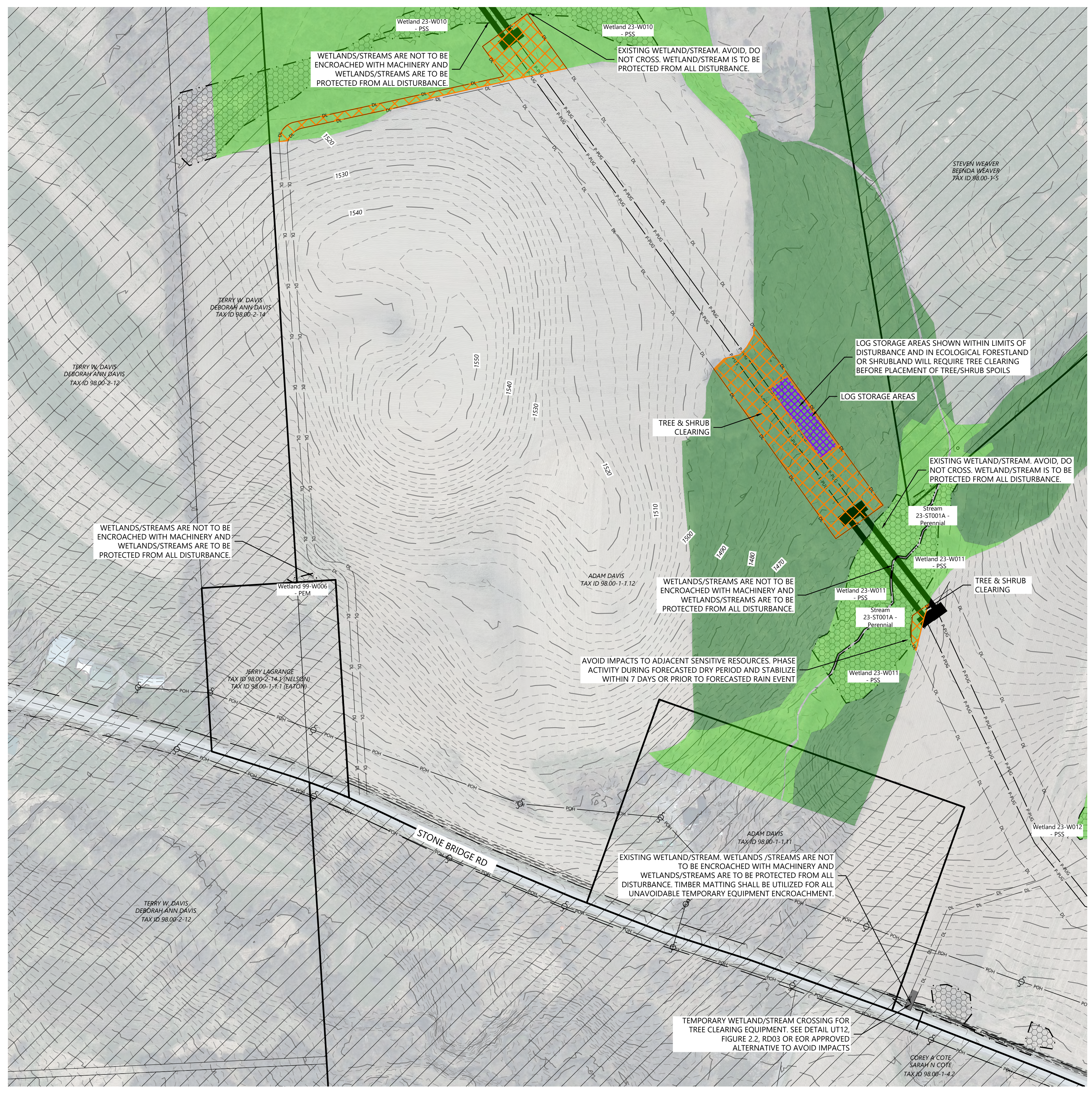
PREPARED FOR:

Hoffman Falls Wind LLC

90 State Street
 Albany, NY 12207

REVISIONS:

#	DATE	COMMENT	BY	CHK	APP
0	01/30/2026	IFC SET	NA	HC	AL
1	04/15/2026	ORES COMMENTS	NA	HC	AL



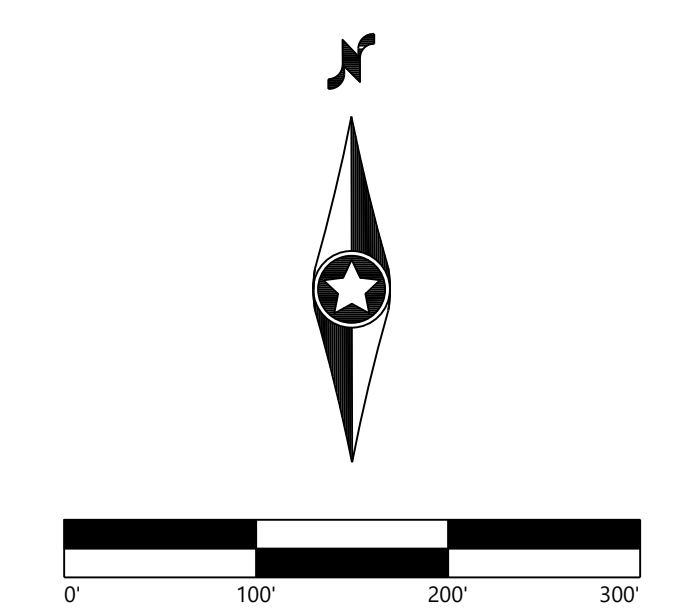
LEGEND:

T-#	TURBINE LOCATION	EX. UTILITY EASEMENT	
ADLS-#	ADLS TOWER	EX. RIGHT OF WAY	
M-#	PERMANENT MET TOWER	EX. STREAM CHANNEL	
	PERMANENT ACCESS ROAD	PROTECTION FENCE	
	TEMPORARY INTERSECTION		EX. WATER WELL
	UNDERGROUND COLLECTION AND COMMUNICATION		EX. CULVERTS
	PROPOSED JUNCTION BOX		EX. WETLAND
	BORE LOCATION		50-FT NYS-REGULATED STREAM BUFFER
	DISTURBANCE LIMITS		75-FT NYS-REGULATED WETLAND BUFFER
	GRADING LIMITS		100-FT NYS-REGULATED WETLAND BUFFER
	EXISTING ROADS		EX. ENVIRONMENTALLY SENSITIVE AREA
	PARCEL LINES (BOUNDARY SURVEY)		FEMA MAPPED FLOOD HAZARD AREA
	NON-PARTICIPATING LAND		PROPOSED FACILITIES
	EX. INDEX CONTOUR		APPROXIMATE PROPOSED SPOILS AND LOG STORAGE, TEMPORARY
	EX. INTERVAL CONTOUR		PROPOSED TEMPORARY CROSSING
	PROPOSED INDEX CONTOUR		
	PROPOSED INTERVAL CONTOUR		
	EX. GAS PIPELINE		
	EX. OVERHEAD POWER		

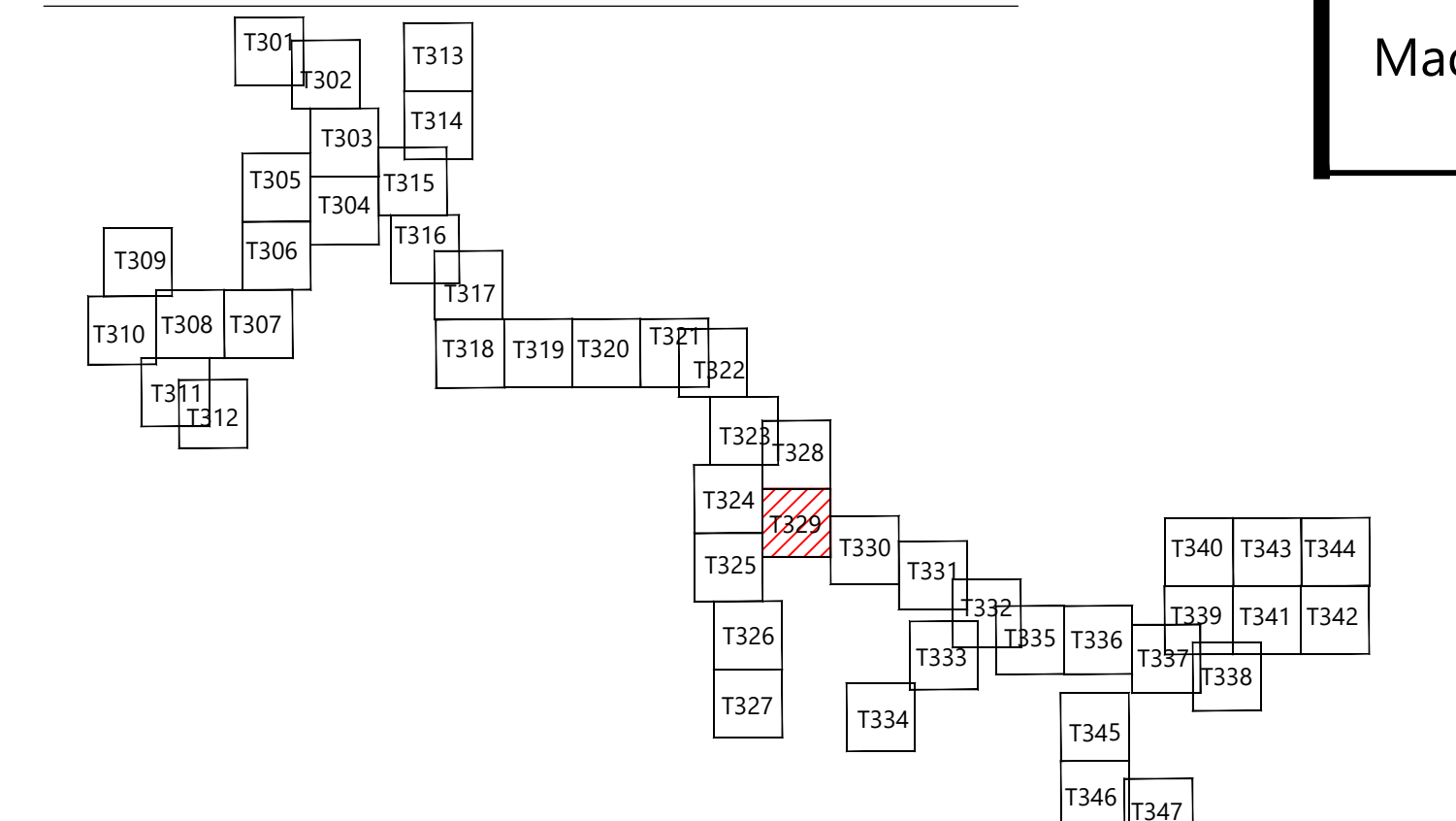
TREE CLEARING LEGEND:

FORESTLAND SHRUBLAND TREE & SHRUB CLEARING

- AT LEAST TWO WEEKS BEFORE TREE CLEARING OR GROUND DISTURBING ACTIVITIES, FLAG THE LIMITS OF DISTURBANCE, THE BOUNDARIES OF ANY DELINEATED WETLANDS, AND WATERBODIES OR STREAMS IN THE DISTURBANCE LIMITS ALL ON OR OFF RIGHT-OF-WAY ACCESS ROADS, LIMITS OF CLEARING AND OTHER AREAS NEEDED FOR CONSTRUCTION, INCLUDING, BUT NOT LIMITED TO, TURBINE WORK AREAS, PROPOSED INFILTRATION AREAS FOR POST CONSTRUCTION STORMWATER MANAGEMENT, AND LAYDOWN AND STORAGE AREAS. IN ADDITION, ENVIRONMENTALLY SENSITIVE AREAS SHALL BE SURROUNDED WITH CONSTRUCTION FENCING AND A SIGN STATING RESTRICTED ACCESS.
- SIGNIFICANT GROUND DISTURBANCE IS DEFINED AS EXCAVATION OR GRADING MORE THAN 6 INCHES DEEP, GRUBBING OR STUMP REMOVAL, AND TRENCHING WIDER THAN 3 FEET.
- TREES WILL BE FELLED AND CUT TO APPROXIMATE LENGTHS WITHIN THE LIMITS OF DISTURBANCE IN PROXIMITY TO THE PROPOSED LOG STORAGE AREA. FELLED TIMBER WILL BE STACKED IN PLACE UNTIL SUFFICIENT SPACE HAS BEEN CLEARED TO ESTABLISH IDENTIFIED LOG STORAGE AREAS. APPROXIMATE LOG STORAGE AREAS WILL BE FINALIZED BASED ON FIELD CONDITIONS.
- THE LIMITS OF TREE AND SHRUB CLEARING ARE BASED ON THE ECOLOGICAL COMMUNITY DATA DISCUSSED IN EXHIBIT 11 OF ARTICLE VIII APPLICATION. SEE EXHIBIT 11 FOR FURTHER DISCUSSION OF THE ECOLOGICAL COMMUNITY TYPES AND FACILITY'S IMPACTS TO FORESTLAND AND SHRUBLAND.
- LOCATIONS OF LOG STOCKPILE AREAS MAY BE MODIFIED BASED ON FIELD CONDITIONS IN COORDINATION WITH ENVIRONMENTAL MONITOR (EM).
- LOW IMPACT VEHICLES ONLY IN ACTIVE AGRICULTURAL AREAS. IF EXCESSIVE RUTTING OR SOIL COMPACTION ABOVE 1.5 INCHES IS OBSERVED, TEMPORARY TIMBER MATTING SHALL BE UTILIZED.
- TREES AND OTHER WOODY VEGETATION WITHIN WETLANDS OR STREAMS ARE TO BE HANDCUT. NO GRUBBING OR STUMP REMOVAL ALLOWED AT ANY STAGE OF CONSTRUCTION.
- WETLANDS AND STREAMS ARE TO BE PROTECTED FROM ALL DISTURBANCE. NO MECHANICAL EQUIPMENT IS ALLOWED WITHIN WETLANDS OR STREAMS. ALL TEMPORARY CROSSINGS OF WETLANDS AND STREAMS BY EQUIPMENT SHALL BE ACCOMPLISHED USING MATTING AND ALL JURISDICTIONAL IMPACTS SHALL BE AVOIDED DURING INSTALLATION, USE, AND REMOVAL.
- WETLANDS AND STREAMS ARE TO BE PROTECTED FROM ALL DISTURBANCE. NO MECHANICAL EQUIPMENT IS ALLOWED WITHIN WETLANDS OR STREAMS. ALL TEMPORARY CROSSINGS OF WETLANDS AND STREAMS BY EQUIPMENT SHALL BE ACCOMPLISHED USING MATTING AND ALL JURISDICTIONAL IMPACTS SHALL BE AVOIDED DURING INSTALLATION, USE, AND REMOVAL.
- ISOLATED TREES MAY EXIST OUTSIDE OF SPECIFIED TREE CLEARING LOCATIONS BUT WITHIN THE LIMIT OF DISTURBANCE (LOD). THE CONTRACTOR IS TO REVIEW THE ENTIRE LIMITS OF DISTURBANCE TO ENSURE ALL TREES AND SHRUBS ARE REMOVED. ISOLATED TREES ARE ANTICIPATED TO BE HAND FELLED AND LEFT IN PLACE UNLESS EQUIPMENT IS ABLE TO ACCESS THESE LOCATIONS WITHOUT ADVERSE IMPACT.
- IN THE EVENT THAT ARCHAEOLOGICAL MATERIALS, HUMAN REMAINS, OR EVIDENCE OF HUMAN BURIALS ARE ENCOUNTERED DURING CONSTRUCTION, ALL WORK IN THE VICINITY OF THE FIND WILL BE IMMEDIATELY HALTED AND THE UNANTICIPATED DISCOVERY PLAN WILL BE IMPLEMENTED.



KEY MAP:

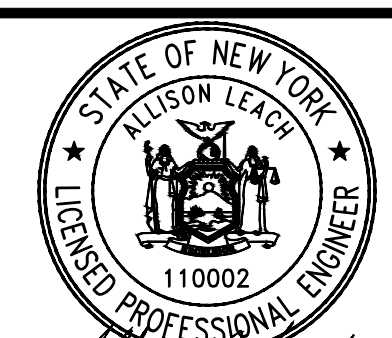


Hoffman Falls Wind Project
 Madison County, New York

Tree Clearing - 16

ISSUE FOR CONSTRUCTION

DATE: 04/15/2026 REV: 1
 SHEET: T329 1



Alison Leach
 04/15/2026

PREPARED FOR:

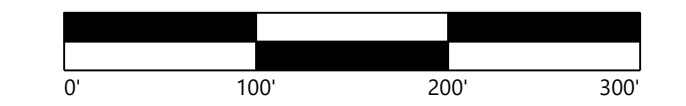
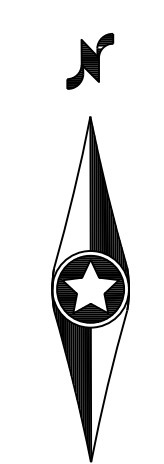
Hoffman Falls Wind LLC

90 State Street
 Albany, NY 12207

REVISIONS:

#	DATE	COMMENT	BY	CHK	APR
0	01/30/2026	IFC SET	NA	HC	AL
1	04/15/2026	ORES COMMENTS	NA	HC	AL

#	DATE	COMMENT	BY	CHK	APR



**Hoffman Falls
 Wind Project**

Madison County, New York

Tree Clearing - 17

ISSUE FOR CONSTRUCTION

DATE: 04/15/2026

SHEET: T330 1

LEGEND:

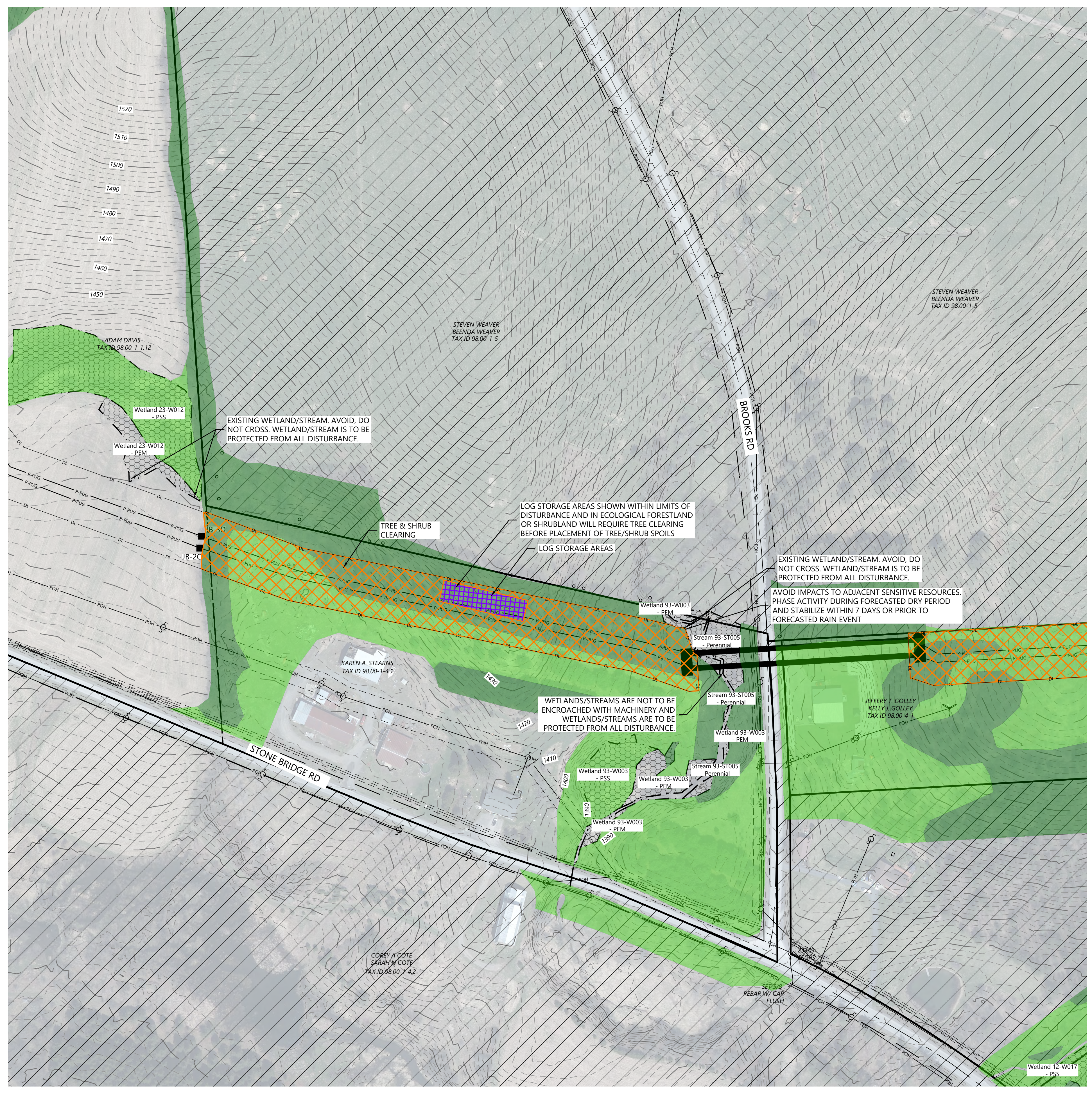
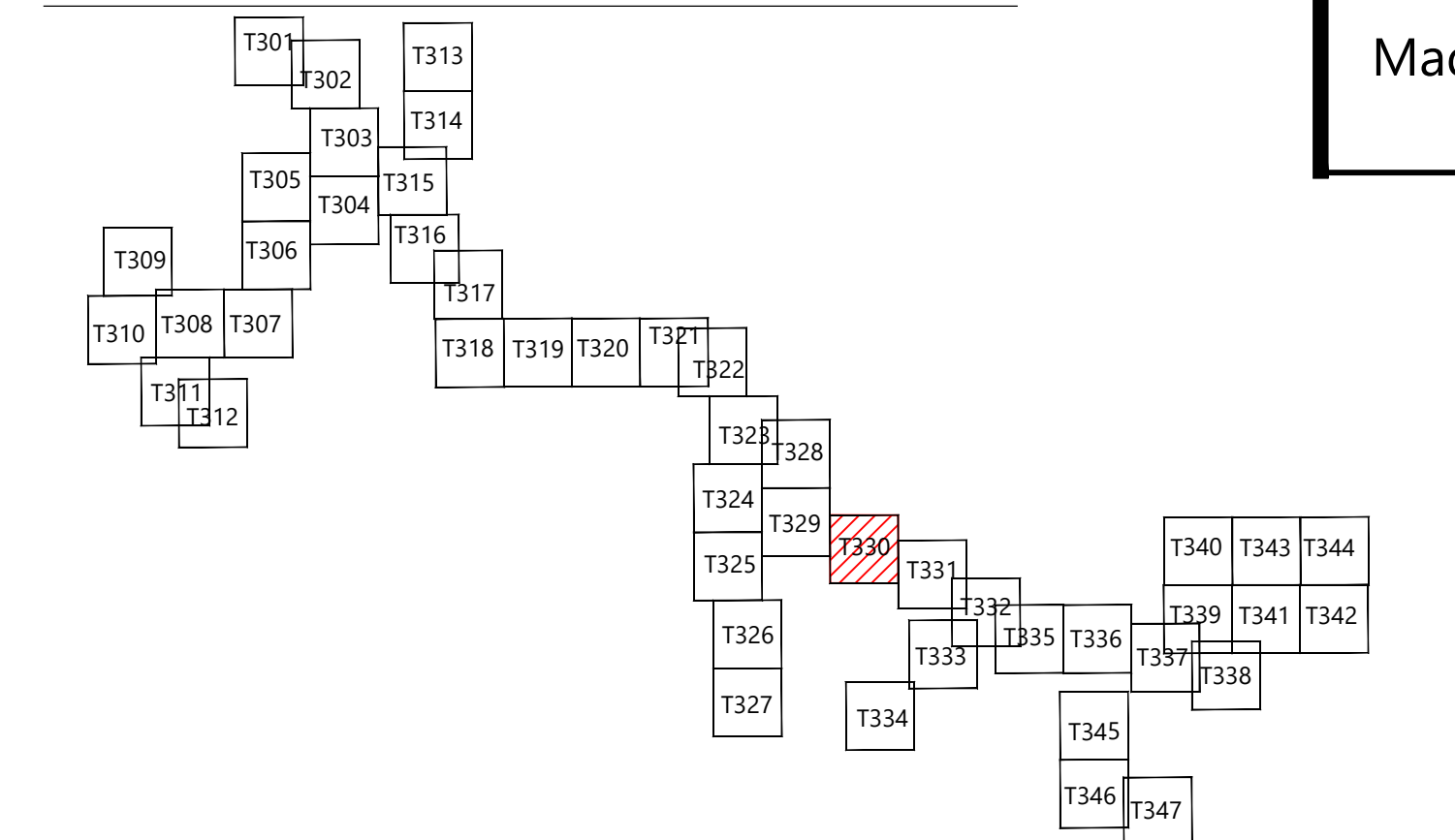
T-#	TURBINE LOCATION	EX. UTILITY EASEMENT
ADLS-#	ADLS TOWER	EX. RIGHT OF WAY
M-#	PERMANENT MET TOWER	EX. STREAM CHANNEL
	PERMANENT ACCESS ROAD	PROTECTION FENCE
	TEMPORARY INTERSECTION	EX. WATER WELL
	UNDERGROUND COLLECTION AND COMMUNICATION	EX. CULVERTS
	PROPOSED JUNCTION BOX	EX. WETLAND
	BORE LOCATION	50-FT NYS-REGULATED STREAM BUFFER
	DISTURBANCE LIMITS	75-FT NYS-REGULATED WETLAND BUFFER
	GRADING LIMITS	100-FT NYS-REGULATED WETLAND BUFFER
	EXISTING ROADS	EX. ENVIRONMENTALLY SENSITIVE AREA
	PARCEL LINES (BOUNDARY SURVEY)	FEMA MAPPED FLOOD HAZARD AREA
	NON-PARTICIPATING LAND	PROPOSED FACILITIES
	EX. INDEX CONTOUR	APPROXIMATE PROPOSED SPOILS AND LOG STORAGE, TEMPORARY
	EX. INTERVAL CONTOUR	PROPOSED TEMPORARY CROSSING
	PROPOSED INDEX CONTOUR	
	PROPOSED INTERVAL CONTOUR	
	EX. GAS PIPELINE	
	EX. OVERHEAD POWER	

TREE CLEARING LEGEND:

	FORESTLAND		SHRUBLAND		TREE & SHRUB CLEARING
--	------------	--	-----------	--	-----------------------

- AT LEAST TWO WEEKS BEFORE TREE CLEARING OR GROUND DISTURBING ACTIVITIES, FLAG THE LIMITS OF DISTURBANCE, THE BOUNDARIES OF ANY DELINEATED WETLANDS, AND WATERBODIES OR STREAMS IN THE DISTURBANCE LIMITS ALL ON OR OFF RIGHT-OF-WAY ACCESS ROADS, LIMITS OF CLEARING AND OTHER AREAS NEEDED FOR CONSTRUCTION, INCLUDING, BUT NOT LIMITED TO, TURBINE WORK AREAS, PROPOSED INFILTRATION AREAS FOR POST CONSTRUCTION STORMWATER MANAGEMENT, AND LAYDOWN AND STORAGE AREAS. IN ADDITION, ENVIRONMENTALLY SENSITIVE AREAS SHALL BE SURROUNDED WITH CONSTRUCTION FENCING AND A SIGN STATING RESTRICTED ACCESS.
- SIGNIFICANT GROUND DISTURBANCE IS DEFINED AS EXCAVATION OR GRADING MORE THAN 6 INCHES DEEP, GRUBBING OR STUMP REMOVAL, AND TRENCHING WIDER THAN 3 FEET.
- TREES WILL BE FELLED AND CUT TO APPROXIMATE LENGTHS WITHIN THE LIMITS OF DISTURBANCE IN PROXIMITY TO THE PROPOSED LOG STORAGE AREA. FELLED TIMBER WILL BE STACKED IN PLACE UNTIL SUFFICIENT SPACE HAS BEEN CLEARED TO ESTABLISH IDENTIFIED LOG STORAGE AREAS. APPROXIMATE LOG STORAGE AREAS WILL BE FINALIZED BASED ON FIELD CONDITIONS.
- THE LIMITS OF TREE AND SHRUB CLEARING ARE BASED ON THE ECOLOGICAL COMMUNITY DATA DISCUSSED IN EXHIBIT 11 OF ARTICLE VIII APPLICATION. SEE EXHIBIT 11 FOR FURTHER DISCUSSION OF THE ECOLOGICAL COMMUNITY TYPES AND FACILITY'S IMPACTS TO FORESTLAND AND SHRUBLAND.
- LOCATIONS OF LOG STOCKPILE AREAS MAY BE MODIFIED BASED ON FIELD CONDITIONS IN COORDINATION WITH ENVIRONMENTAL MONITOR (EM).
- LOW IMPACT VEHICLES ONLY IN ACTIVE AGRICULTURAL AREAS. IF EXCESSIVE RUTTING OR SOIL COMPACTION ABOVE 1.5 INCHES IS OBSERVED, TEMPORARY TIMBER MATTING SHALL BE UTILIZED.
- TREES AND OTHER WOODY VEGETATION WITHIN WETLANDS OR STREAMS ARE TO BE HANDCUT. NO GRUBBING OR STUMP REMOVAL ALLOWED AT ANY STAGE OF CONSTRUCTION.
- WETLANDS AND STREAMS ARE TO BE PROTECTED FROM ALL DISTURBANCE. NO MECHANICAL EQUIPMENT IS ALLOWED WITHIN WETLANDS OR STREAMS. ALL TEMPORARY CROSSINGS OF WETLANDS AND STREAMS BY EQUIPMENT SHALL BE ACCOMPLISHED USING MATTING AND ALL JURISDICTIONAL IMPACTS SHALL BE AVOIDED DURING INSTALLATION, USE, AND REMOVAL.
- ISOLATED TREES MAY EXIST OUTSIDE OF SPECIFIED TREE CLEARING LOCATIONS BUT WITHIN THE LIMIT OF DISTURBANCE (LOD). THE CONTRACTOR IS TO REVIEW THE ENTIRE LIMITS OF DISTURBANCE TO ENSURE ALL TREES AND SHRUBS ARE REMOVED. ISOLATED TREES ARE ANTICIPATED TO BE HAND FELLED AND LEFT IN PLACE UNLESS EQUIPMENT IS ABLE TO ACCESS THESE LOCATIONS WITHOUT ADVERSE IMPACT.
- IN THE EVENT THAT ARCHAEOLOGICAL MATERIALS, HUMAN REMAINS, OR EVIDENCE OF HUMAN BURIALS ARE ENCOUNTERED DURING CONSTRUCTION, ALL WORK IN THE VICINITY OF THE FIND WILL BE IMMEDIATELY HALTED AND THE UNANTICIPATED DISCOVERY PLAN WILL BE IMPLEMENTED.

KEY MAP:





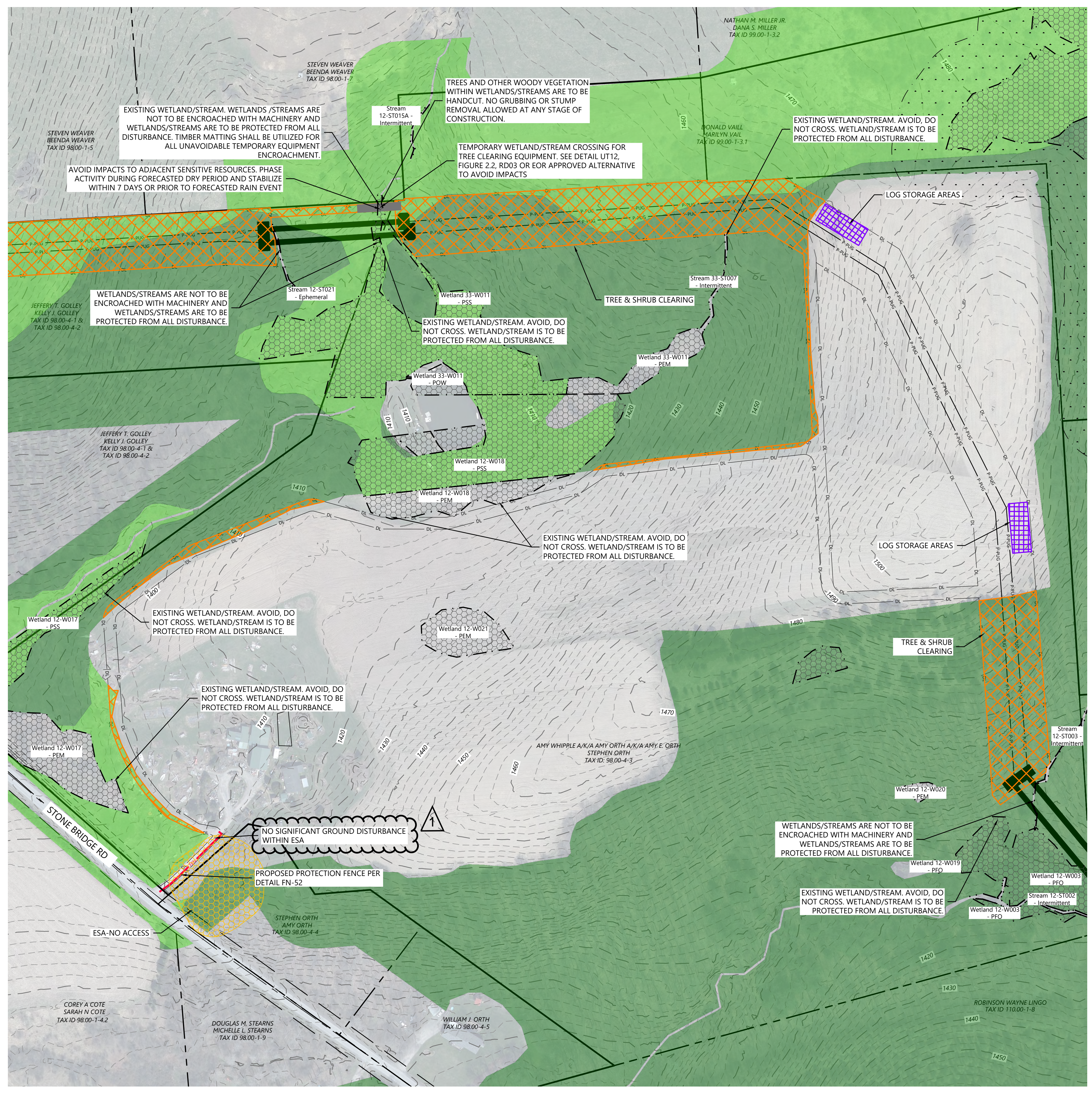
PREPARED FOR:

Hoffman Falls Wind LLC

90 State Street
 Albany, NY 12207

REVISIONS:

#	DATE	COMMENT	BY	CHK	APR
0	01/30/2026	IFC SET	NA	HC	AL
1	04/15/2026	ORES COMMENTS	NA	HC	AL



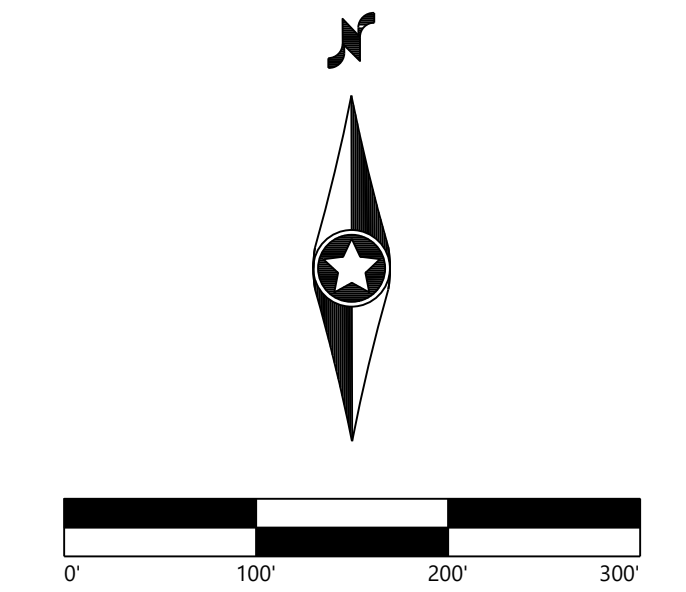
LEGEND:

- T-#** TURBINE LOCATION
- ADLS-#** ADLS TOWER
- M-#** PERMANENT MET TOWER
- PERMANENT ACCESS ROAD
- TEMPORARY INTERSECTION
- UNDERGROUND COLLECTION AND COMMUNICATION
- PROPOSED JUNCTION BOX
- BORE LOCATION
- DISTURBANCE LIMITS
- GRADING LIMITS
- EXISTING ROADS
- PARCEL LINES (BOUNDARY SURVEY)
- NON-PARTICIPATING LAND
- EX. INDEX CONTOUR
- EX. INTERVAL CONTOUR
- PROPOSED INDEX CONTOUR
- PROPOSED INTERVAL CONTOUR
- EX. GAS PIPELINE
- EX. OVERHEAD POWER
- EX. UTILITY EASEMENT
- EX. RIGHT OF WAY
- EX. STREAM CHANNEL
- PROTECTION FENCE
- EX. WATER WELL
- EX. CULVERTS
- EX. WETLAND
- 50-FT NYS-REGULATED STREAM BUFFER
- 75-FT NYS-REGULATED WETLAND BUFFER
- 100-FT NYS-REGULATED WETLAND BUFFER
- EX. ENVIRONMENTALLY SENSITIVE AREA
- FEMA MAPPED FLOOD HAZARD AREA
- PROPOSED FACILITIES
- APPROXIMATE PROPOSED SPOILS AND LOG STORAGE, TEMPORARY
- PROPOSED TEMPORARY CROSSING

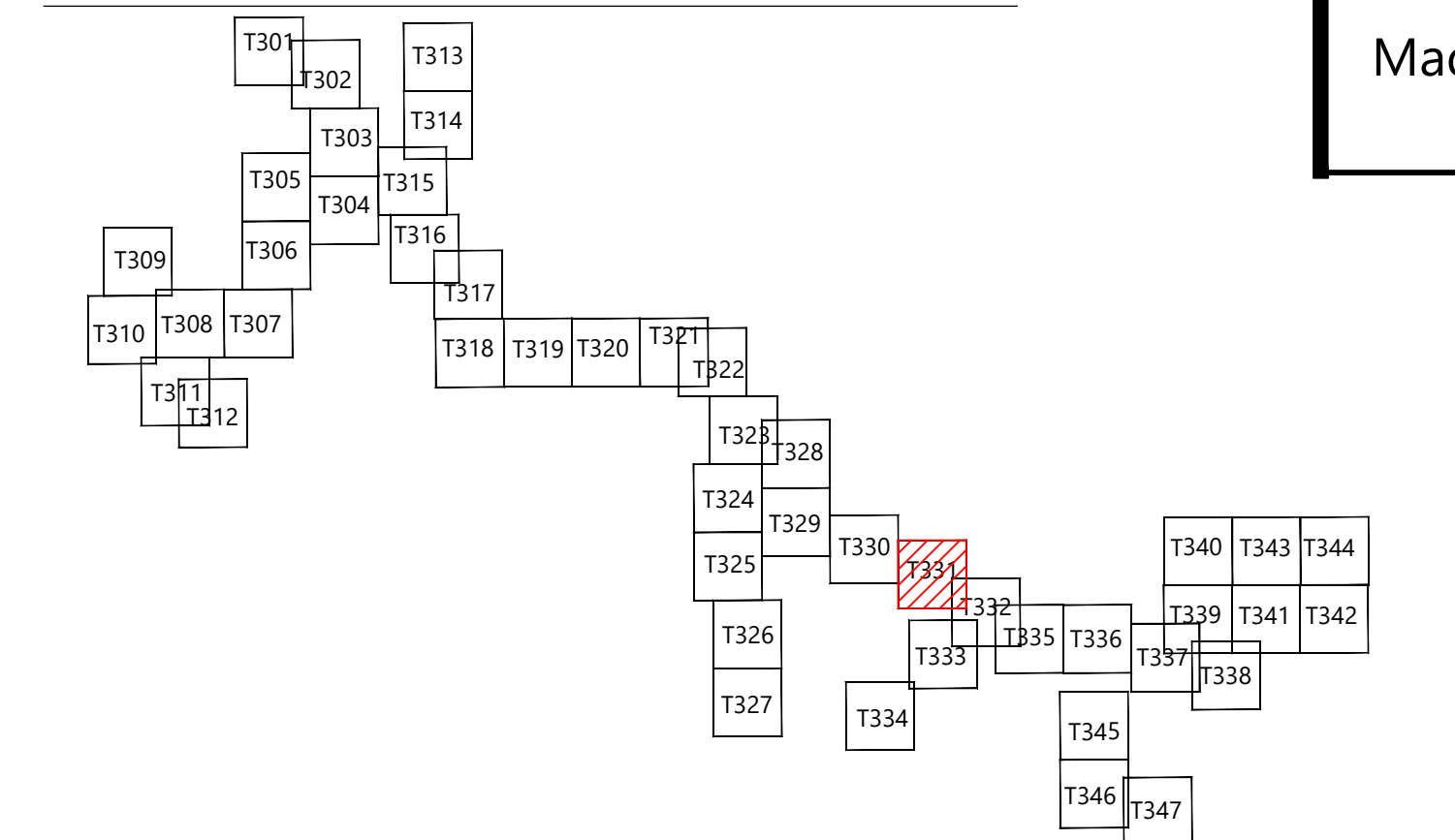
TREE CLEARING LEGEND:

- FORESTLAND
- SHRUBLAND
- TREE & SHRUB CLEARING

- AT LEAST TWO WEEKS BEFORE TREE CLEARING OR GROUND DISTURBING ACTIVITIES, FLAG THE LIMITS OF DISTURBANCE, THE BOUNDARIES OF ANY DELINEATED WETLANDS, AND WATERBODIES OR STREAMS IN THE DISTURBANCE LIMITS ALL ON OR OFF RIGHT-OF-WAY ACCESS ROADS, LIMITS OF CLEARING AND OTHER AREAS NEEDED FOR CONSTRUCTION, INCLUDING, BUT NOT LIMITED TO, TURBINE WORK AREAS, PROPOSED INFILTRATION AREAS FOR POST CONSTRUCTION STORMWATER MANAGEMENT, AND LAYDOWN AND STORAGE AREAS. IN ADDITION, ENVIRONMENTALLY SENSITIVE AREAS SHALL BE SURROUNDED WITH CONSTRUCTION FENCING AND A SIGN STATING RESTRICTED ACCESS.
- SIGNIFICANT GROUND DISTURBANCE IS DEFINED AS EXCAVATION OR GRADING MORE THAN 6 INCHES DEEP, GRUBBING OR STUMP REMOVAL, AND TRENCHING WIDER THAN 3 FEET.
- TREES WILL BE FELLED AND CUT TO APPROXIMATE LENGTHS WITHIN THE LIMITS OF DISTURBANCE IN PROXIMITY TO THE PROPOSED LOG STORAGE AREA. FELLED TIMBER WILL BE STACKED IN PLACE UNTIL SUFFICIENT SPACE HAS BEEN CLEARED TO ESTABLISH IDENTIFIED LOG STORAGE AREAS. APPROXIMATE LOG STORAGE AREAS WILL BE FINALIZED BASED ON FIELD CONDITIONS.
- THE LIMITS OF TREE AND SHRUB CLEARING ARE BASED ON THE ECOLOGICAL COMMUNITY DATA DISCUSSED IN EXHIBIT 11 OF ARTICLE VIII APPLICATION. SEE EXHIBIT 11 FOR FURTHER DISCUSSION OF THE ECOLOGICAL COMMUNITY TYPES AND FACILITY'S IMPACTS TO FORESTLAND AND SHRUBLAND.
- LOCATIONS OF LOG STOCKPILE AREAS MAY BE MODIFIED BASED ON FIELD CONDITIONS IN COORDINATION WITH ENVIRONMENTAL MONITOR (EM).
- LOW IMPACT VEHICLES ONLY IN ACTIVE AGRICULTURAL AREAS. IF EXCESSIVE RUTTING OR SOIL COMPACTION ABOVE 1.5 INCHES IS OBSERVED, TEMPORARY TIMBER MATTING SHALL BE UTILIZED.
- TREES AND OTHER WOODY VEGETATION WITHIN WETLANDS OR STREAMS ARE TO BE HANDCUT. NO GRUBBING OR STUMP REMOVAL ALLOWED AT ANY STAGE OF CONSTRUCTION.
- WETLANDS AND STREAMS ARE TO BE PROTECTED FROM ALL DISTURBANCE. NO MECHANICAL EQUIPMENT IS ALLOWED WITHIN WETLANDS OR STREAMS. ALL TEMPORARY CROSSINGS OF WETLANDS AND STREAMS BY EQUIPMENT SHALL BE ACCOMPLISHED USING MATTING AND ALL JURISDICTIONAL IMPACTS SHALL BE AVOIDED DURING INSTALLATION, USE, AND REMOVAL.
- ISOLATED TREES MAY EXIST OUTSIDE OF SPECIFIED TREE CLEARING LOCATIONS BUT WITHIN THE LIMIT OF DISTURBANCE (LOD). THE CONTRACTOR IS TO REVIEW THE ENTIRE LIMITS OF DISTURBANCE TO ENSURE ALL TREES AND SHRUBS ARE REMOVED. ISOLATED TREES ARE ANTICIPATED TO BE HAND FELLED AND LEFT IN PLACE UNLESS EQUIPMENT IS ABLE TO ACCESS THESE LOCATIONS WITHOUT ADVERSE IMPACT.
- IN THE EVENT THAT ARCHAEOLOGICAL MATERIALS, HUMAN REMAINS, OR EVIDENCE OF HUMAN BURIALS ARE ENCOUNTERED DURING CONSTRUCTION, ALL WORK IN THE VICINITY OF THE FIND WILL BE IMMEDIATELY HALTED AND THE UNANTICIPATED DISCOVERY PLAN WILL BE IMPLEMENTED.



KEY MAP:



Hoffman Falls Wind Project
 Madison County, New York

Tree Clearing - 18

ISSUE FOR CONSTRUCTION

DATE: 04/15/2026
 SHEET: T331 1



Alison Leach
04/15/2026

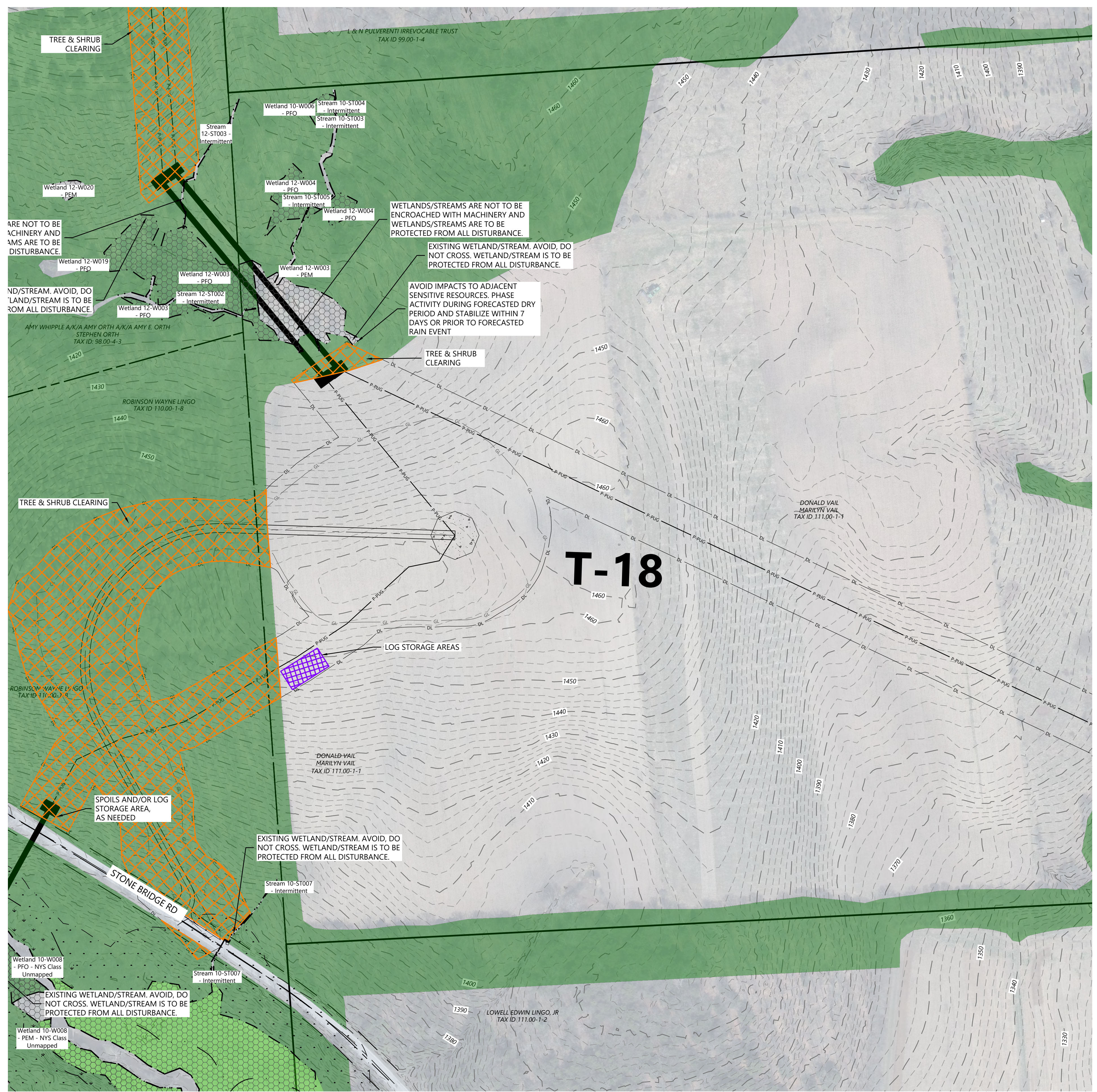
PREPARED FOR:

Hoffman Falls Wind LLC

90 State Street
Albany, NY 12207

REVISIONS:

#	DATE	COMMENT	BY	CHK	APR
0	01/30/2026	IFC SET		NA	HC AL
1	04/15/2026	ORES COMMENTS		NA	HC AL



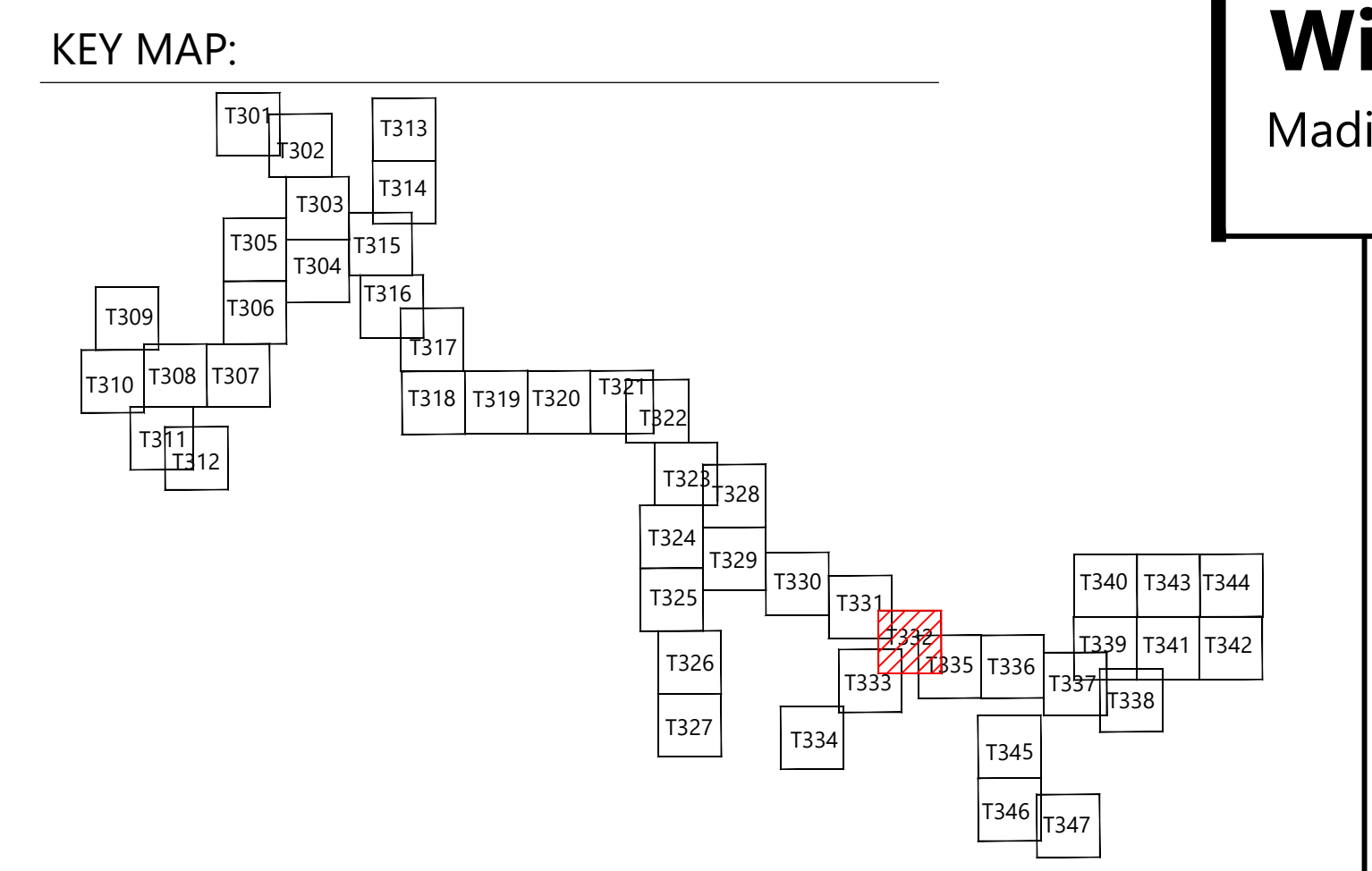
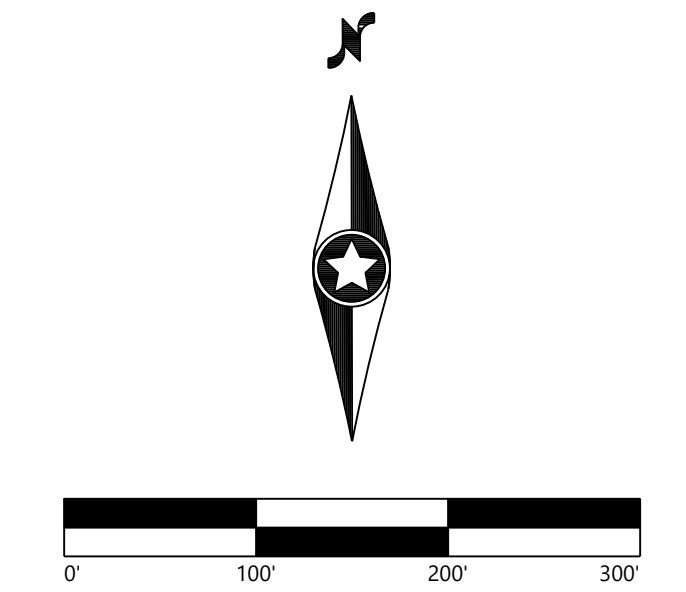
LEGEND:

T-#	TURBINE LOCATION	EX. UTILITY EASEMENT
ADLS-#	ADLS TOWER	EX. RIGHT OF WAY
M-#	PERMANENT MET TOWER	EX. STREAM CHANNEL
	PERMANENT ACCESS ROAD	PROTECTION FENCE
	TEMPORARY INTERSECTION	EX. WATER WELL
	UNDERGROUND COLLECTION AND COMMUNICATION	EX. CULVERTS
	PROPOSED JUNCTION BOX	EX. WETLAND
	BORE LOCATION	50-FT NYS-REGULATED STREAM BUFFER
DL	DISTURBANCE LIMITS	75-FT NYS-REGULATED WETLAND BUFFER
GL	GRADING LIMITS	100-FT NYS-REGULATED WETLAND BUFFER
	EXISTING ROADS	EX. ENVIRONMENTALLY SENSITIVE AREA
	PARCEL LINES (BOUNDARY SURVEY)	
	NON-PARTICIPATING LAND	
	EX. INDEX CONTOUR	
	EX. INTERVAL CONTOUR	
	PROPOSED INDEX CONTOUR	
	PROPOSED INTERVAL CONTOUR	
	EX. GAS PIPELINE	
	EX. OVERHEAD POWER	

TREE CLEARING LEGEND:

	FORESTLAND		SHRUBLAND		TREE & SHRUB CLEARING
--	------------	--	-----------	--	-----------------------

- AT LEAST TWO WEEKS BEFORE TREE CLEARING OR GROUND DISTURBING ACTIVITIES, FLAG THE LIMITS OF DISTURBANCE, THE BOUNDARIES OF ANY DELINEATED WETLANDS, AND WATERBODIES OR STREAMS IN THE DISTURBANCE LIMITS ALL ON OR OFF RIGHT-OF-WAY ACCESS ROADS, LIMITS OF CLEARING AND OTHER AREAS NEEDED FOR CONSTRUCTION, INCLUDING, BUT NOT LIMITED TO, TURBINE WORK AREAS, PROPOSED INFILTRATION AREAS FOR POST CONSTRUCTION STORMWATER MANAGEMENT, AND LAYDOWN AND STORAGE AREAS. IN ADDITION, ENVIRONMENTALLY SENSITIVE AREAS SHALL BE SURROUNDED WITH CONSTRUCTION FENCING AND A SIGN STATING RESTRICTED ACCESS.
- SIGNIFICANT GROUND DISTURBANCE IS DEFINED AS EXCAVATION OR GRADING MORE THAN 6 INCHES DEEP, GRUBBING OR STUMP REMOVAL, AND TRENCHING WIDER THAN 3 FEET.
- TREES WILL BE FELLED AND CUT TO APPROXIMATE LENGTHS WITHIN THE LIMITS OF DISTURBANCE IN PROXIMITY TO THE PROPOSED LOG STORAGE AREA. FELLED TIMBER WILL BE STACKED IN PLACE UNTIL SUFFICIENT SPACE HAS BEEN CLEARED TO ESTABLISH IDENTIFIED LOG STORAGE AREAS. APPROXIMATE LOG STORAGE AREAS WILL BE FINALIZED BASED ON FIELD CONDITIONS.
- THE LIMITS OF TREE AND SHRUB CLEARING ARE BASED ON THE ECOLOGICAL COMMUNITY DATA DISCUSSED IN EXHIBIT 11 OF ARTICLE VIII APPLICATION. SEE EXHIBIT 11 FOR FURTHER DISCUSSION OF THE ECOLOGICAL COMMUNITY TYPES AND FACILITY'S IMPACTS TO FORESTLAND AND SHRUBLAND.
- LOCATIONS OF LOG STOCKPILE AREAS MAY BE MODIFIED BASED ON FIELD CONDITIONS IN COORDINATION WITH ENVIRONMENTAL MONITOR (EM).
- LOW IMPACT VEHICLES ONLY IN ACTIVE AGRICULTURAL AREAS. IF EXCESSIVE RUTTING OR SOIL COMPACTION ABOVE 1.5 INCHES IS OBSERVED, TEMPORARY TIMBER MATTING SHALL BE UTILIZED.
- TREES AND OTHER WOODY VEGETATION WITHIN WETLANDS OR STREAMS ARE TO BE HANDCUT. NO GRUBBING OR STUMP REMOVAL ALLOWED AT ANY STAGE OF CONSTRUCTION.
- WETLANDS AND STREAMS ARE TO BE PROTECTED FROM ALL DISTURBANCE. NO MECHANICAL EQUIPMENT IS ALLOWED WITHIN WETLANDS OR STREAMS. ALL TEMPORARY CROSSINGS OF WETLANDS AND STREAMS BY EQUIPMENT SHALL BE ACCOMPLISHED USING MATTING AND ALL JURISDICTIONAL IMPACTS SHALL BE AVOIDED DURING INSTALLATION, USE, AND REMOVAL.
- ISOLATED TREES MAY EXIST OUTSIDE OF SPECIFIED TREE CLEARING LOCATIONS BUT WITHIN THE LIMIT OF DISTURBANCE (LOD). THE CONTRACTOR IS TO REVIEW THE ENTIRE LIMITS OF DISTURBANCE TO ENSURE ALL TREES AND SHRUBS ARE REMOVED. ISOLATED TREES ARE ANTICIPATED TO BE HAND FELLED AND LEFT IN PLACE UNLESS EQUIPMENT IS ABLE TO ACCESS THESE LOCATIONS WITHOUT ADVERSE IMPACT.
- IN THE EVENT THAT ARCHAEOLOGICAL MATERIALS, HUMAN REMAINS, OR EVIDENCE OF HUMAN BURIALS ARE ENCOUNTERED DURING CONSTRUCTION, ALL WORK IN THE VICINITY OF THE FIND WILL BE IMMEDIATELY HALTED AND THE UNANTICIPATED DISCOVERY PLAN WILL BE IMPLEMENTED.



Hoffman Falls Wind Project
Madison County, New York

Tree Clearing - T-18

ISSUE FOR CONSTRUCTION

DATE: 04/15/2026 REV: 1
 SHEET: T332 1