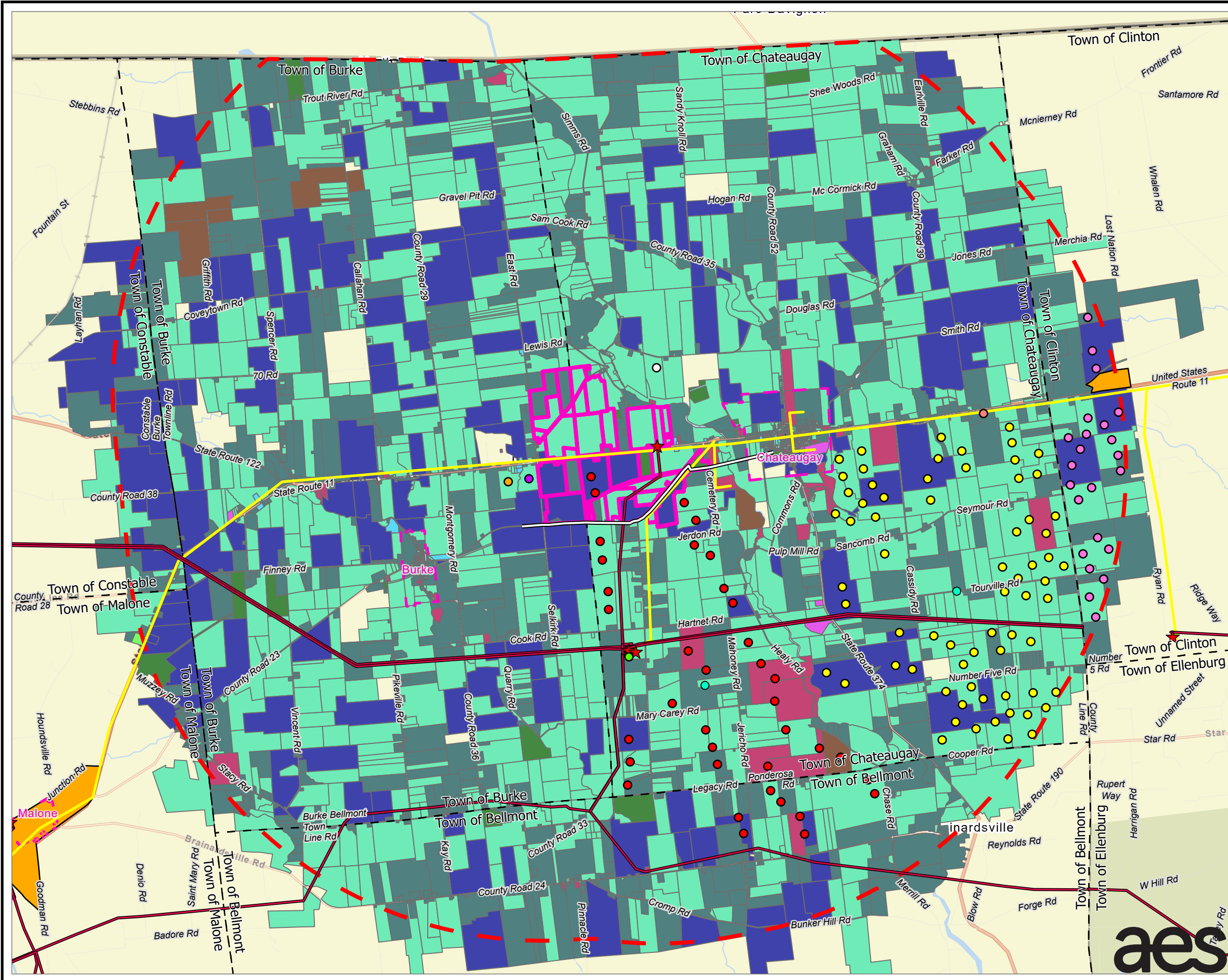


Attachment B

Revised Figure 3-3. Current Land Use and Major Utility Infrastructure in the Study Area

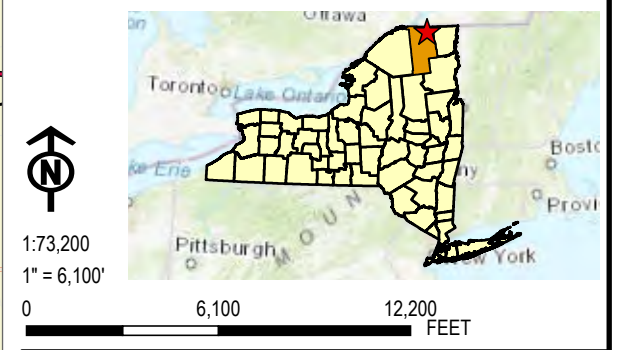


LEGEND

- APPROXIMATED PROPOSED NORTH COUNTY WIND FACILITY
- GLENGARRY SOLAR PROJECT
- NOBLE CHATEAUGAY WIND PARK
- NORBUT SOLAR FARMS (15-MW SOLAR FACILITY)
- NORTH COUNTRY ENERGY STORAGE FACILITY
- PROPOSED NEXAMP 5MW SOLAR FACILITY
- JERICO RISE WIND TURBINE
- NOBLE CHATEAUGAY WIND TURBINE
- NOBLE CLINTON WIND TURBINE
- ★ ELECTRIC SUBSTATION
- C ST. LAWRENCE GAS MAIN LINE
- FIBER CABLE
- FIBER OPTIC AVAILABILITY
- ELECTRIC TRANSMISSION LINE
- FIVE-MILE STUDY AREA BOUNDARY
- FACILITY SITE PARCELS
- VILLAGE BOUNDARY
- TOWN BOUNDARY
- AGRICULTURAL/RURAL
- COMMERCIAL (OFFICE)
- COMMERCIAL (RETAIL)
- EXEMPT, GOVERNMENT AND HISTORICAL
- HEAVY INDUSTRIAL AND TRANSPORTATION
- INDUSTRIAL (GENERAL)
- MISCELLANEOUS
- RECREATIONAL
- RESIDENTIAL
- VACANT LAND

NOTES:
 1. THIS FIGURE IS DESIGNED TO BE VIEWED OR PRINTED IN COLOR AT 11X17.

BASE MAP: ESRI "WORLD STREET MAP" 2021 ONLINE SERVICE LAYER.
 DATA SOURCES: AES, DANC, NYSGIS, FRANKLIN COUNTY RPTS, REXTAG, TRC



PROJECT: BROOKSIDE SOLAR LLC TOWNS OF BURKE & CHATEAUGAY FRANKLIN COUNTY, NY	
TITLE: CURRENT LAND USE AND MAJOR UTILITY INFRASTRUCTURE IN THE STUDY AREA	
DRAWN BY: J. FREDENBURG	PROJ. NO.: 373210
CHECKED BY: P. JACQUES	FIGURE 3-3
APPROVED BY: H. EFFLER	
DATE: JUNE 2022	

215 GREENFIELD PKWY, STE 102
 LIVERPOOL, NY 13088