

Attachment G

**Revised Visual Simulations
VP4 and VP7**

TABLE 8-A. PLANT HEIGHT ESTIMATES FOR BROOKSIDE SOLAR PROJECT

DECIDUOUS AND EVERGREEN TREES							APPROXIMATE 1-2 YR GROWTH HEIGHT		APPROXIMATE 10-YEAR GROWTH HEIGHT		
SYMBOL	BOTANICAL NAME/ COMMON PLANT NAME	QTY	SIZE	ROOT	APPROXIMATE ANNUAL GROWTH RATE*	APPLIED ANNUAL GROWTH RATE (FT)	MIN RANGE	MAX RANGE	MIN RANGE	MAX RANGE	MATURE HEIGHT
AA	AMELANCHIER ARBOREA DOWNY SHADBUSH	201	6'-8' HT.	B&B	13-24"	1.25	8	10	19	21	15'-20' HT.
AB	ABIES BALSAMEA BALSAM FIR	306	5'-6' HT.	B&B	less than 12"	0.75	6	7	13	14	40'-60' HT.
CF	CORNUS FLORIDA FLOWERING DOGWOOD	184	1" CAL. MIN.	B&B	13-24"	1.25	10	11	21	22	15'-25' HT.
JV	JUNIPERUS VIRGINIANA EASTERN RED CEDAR	1,261	5'-6' HT.	B&B	13-24"	1.25	7	8	18	19	40'-50' HT.
PG	PICEA GLAUCA WHITE SPRUCE	547	5'-6' HT.	B&B	13-24"	1.25	7	8	18	19	40'-60' HT.
TO	THUJA OCCIDENTALIS NORTHERN WHITE CEDAR	663	5'-6' HT.	B&B	less than 12" to 24"	1	7	8	15	16	40'-50' HT.

SHRUBS							APPROXIMATE 1-2 YR GROWTH HEIGHT		APPROXIMATE 10-YEAR GROWTH HEIGHT		
SYMBOL	BOTANICAL NAME/ COMMON PLANT NAME	QUAN TITY	SIZE	ROOT	APPROXIMATE ANNUAL GROWTH RATE*	APPLIED ANNUAL GROWTH RATE (FT)	MIN RANGE	MAX RANGE	MIN RANGE	MAX RANGE	MATURE HEIGHT
AR	ARONIA ARBUTIFOLIA RED CHOKEBERRY	651	24"- 30" HT.	#3/5 CONT.	less than 12"	0.75	3	4	10	10	7'-10' HT.
CS	CORNUS SERICEA RED TWIG DOGWOOD	407	24"- 30" HT.	#3/5 CONT.	13-24"	1.25	4	4	15	15	7'-10' HT.
HV	HAMAMELIS VIRGINIANA COMMON WITCH HAZEL	181	3'-4' HT.	B&B	13-24"	1.25	5	6	16	17	15'-25' HT.
IV	ILEX VERTICILLATA COMMON WINTERBERRY	350	24"- 30" HT.	#3/5 CONT.	less than 12"	0.75	3	4	10	10	10'-12' HT.
VC	VACCIINIUM CORYMBOSUM HIGHBUSH BLUEBERRY	523	24"- 30" HT.	#3/5 CONT.	less than 12"	0.75	3	4	10	10	6'-12' HT.

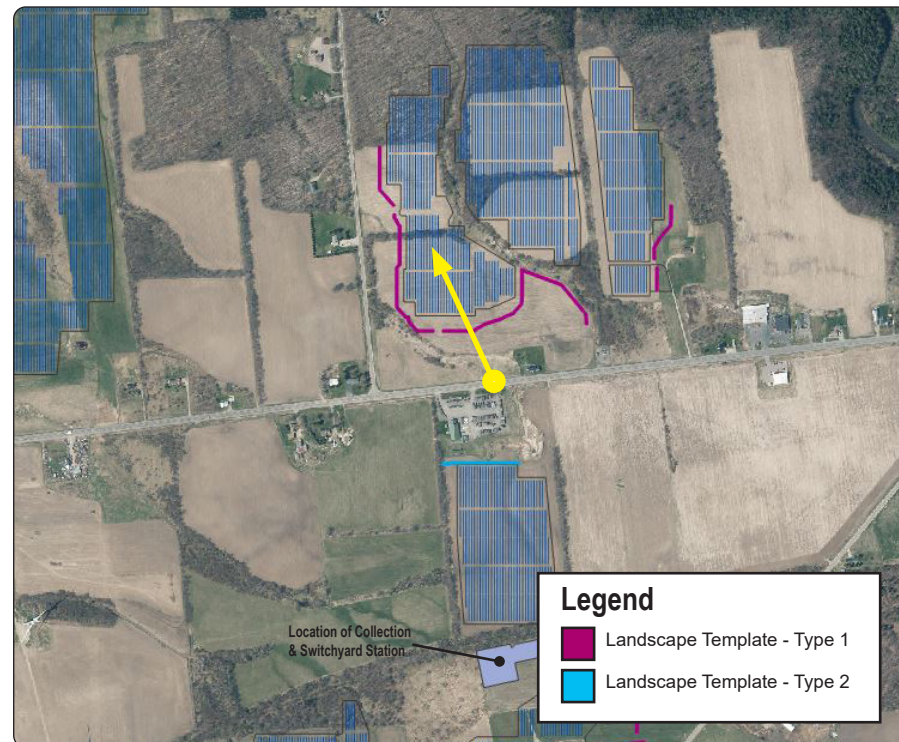
Annual Growth Rates obtained from <https://www.arboday.org/> and <https://mortonarb.org/>

Existing Conditions

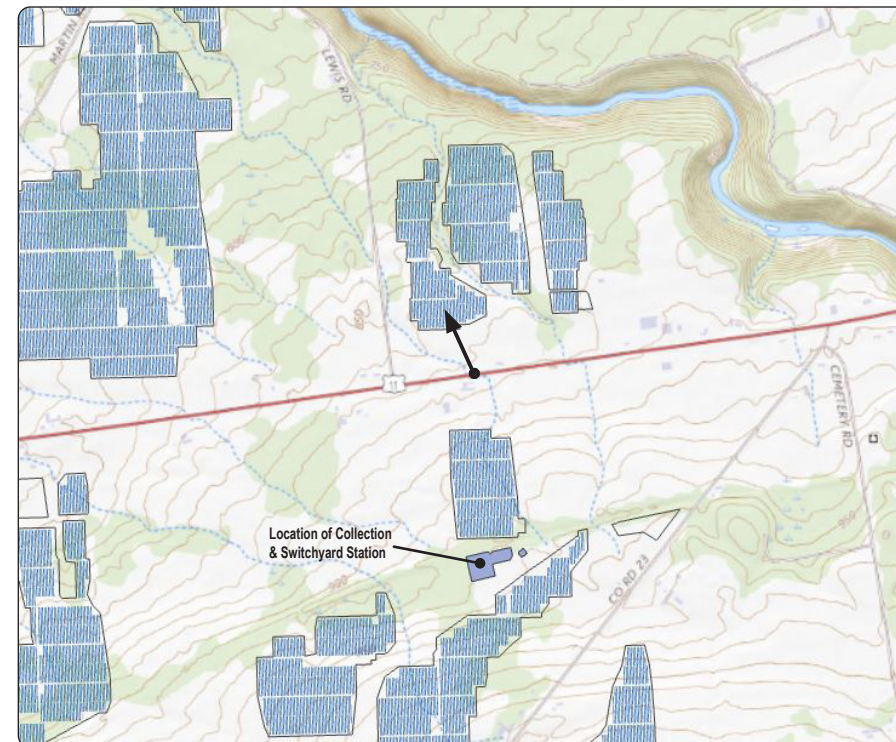


NNW

Viewpoint Location Aerial Map



Viewpoint Location Topographic Map



Viewpoint Coordinates	44.92251 -74.13079
Town	Burke
Viewpoint Elevation (MSL)	882
Distance to Fence Line	508'
Direction of View	North Northwest
Lens Focal Length	50mm (35mm Equivalent)
Date/Time of Photograph	3/22/2021, 10:22 AM







