

September 25, 2025

VIA EMAIL

Hon. Michelle L. Phillips
Secretary to the Commission
3 Empire State Plaza
Albany, NY 12223-1350

Re: Matter No. 21-01188 – In the Matter of the Indian Point Closure Task Force and Indian Point Decommissioning Oversight Board.

Dear Secretary Phillips:

Please accept for filing in the above-captioned matter, Holtec's September 25, 2025 presentation to the Indian Point Decommissioning Oversight Board. Should you have any questions regarding this filing, please contact me. Thank you.

Respectfully submitted,



Tom Kaczmarek
Executive Director
Indian Point Decommissioning Oversight Board



Decommissioning Oversight Board

Holtec Decommissioning International (HDI)
September 25, 2025

Matt Johnson
Acting Indian Point Site Vice President



Agenda

- Safety
- Work completed since last DOB (May 2025)
- Work activities planned through 2025
- NRC updates
- Training Building Cesium update
- Corporate Update



Workforce safety updates

Nuclear Safety

- Work Processes

- **Core Value:** The process of planning and controlling work activities is implemented so that safety is maintained.

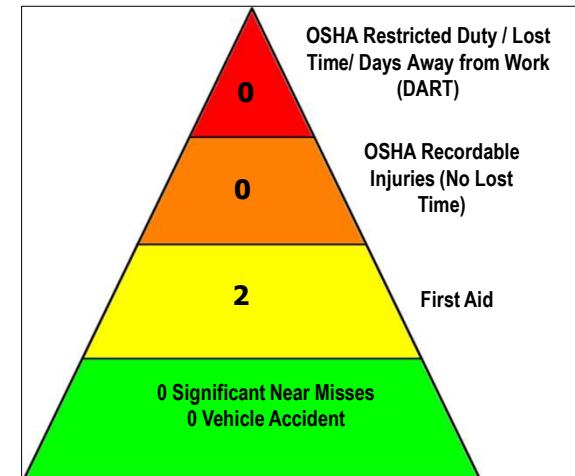
- **Organizational Actions:** Work management is a deliberate process in which work is identified, selected, planned, scheduled, executed, closed, and critiqued. The entire organization is involved in and fully supports the process.

Industrial Safety

- Safety messages this month – **Workplace Distractions**

- Many incidents and injuries occur when you are distracted while working. These distractions can be eliminated by utilizing our Human Performance Tools. Examples of these distractions are:

- Mental distractions
 - Inattention
 - Tools / Equipment
 - Hearing
 - Shortcuts
 - Overconfidence
 - Poor housekeeping
 - Ignoring safety procedures



2025

Dose IP1:

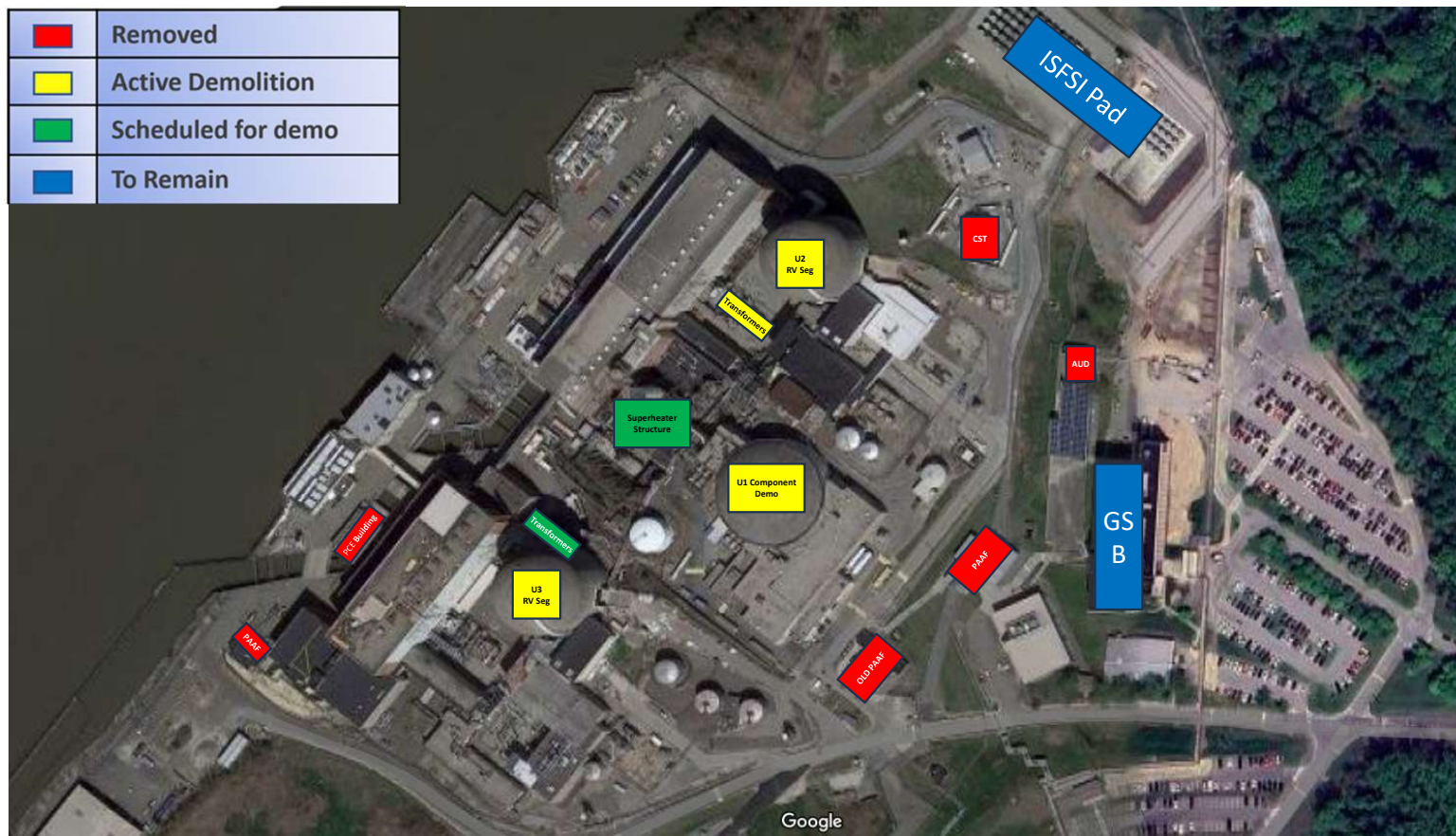
- 2nd Quarter 2025: 3.451Rem /3.540 Rem Goal
- Year 2025: 7.163 Rem /15.816 Rem Goal

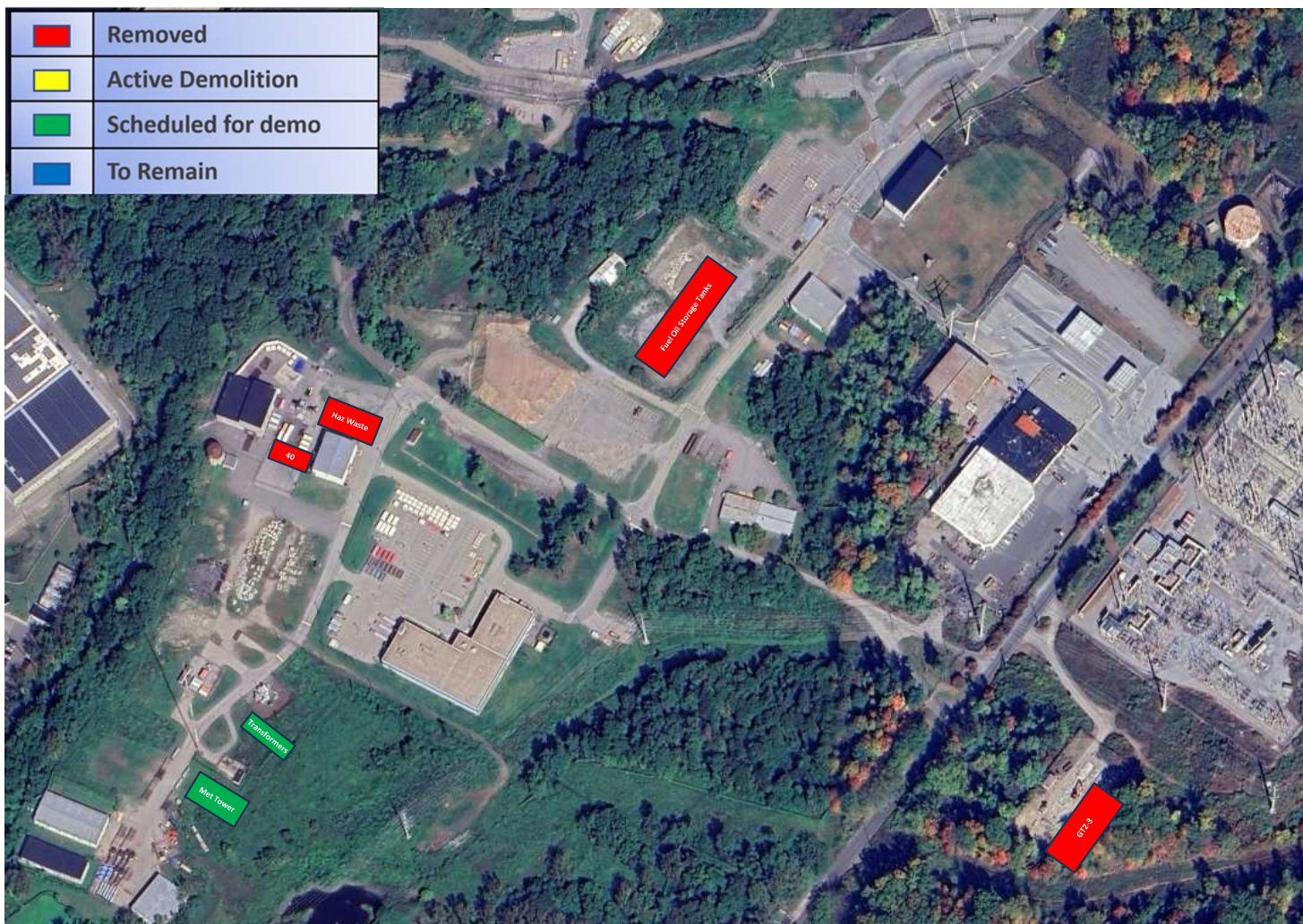
Dose IP2:

- 2nd Quarter 2025: 4.877 Rem /5.022 Rem Goal
- Year 2025: 7.736 Rem /64.329 Rem Goal

Dose IP3:

- 2nd Quarter 2025: 3.745 Rem /3.900 Rem Goal
- Year 2025: 10.497 Rem /26.5 Rem Goal





Vessel Segmentation activities since last DOB

■ Unit 2

- Installed Core Barrel into stand in lower cavity for segmentation.
- Installed LRVI cutting equipment (from Unit 3)
- Commenced Segmentation of lower internals. Completed 1st - 4 rings

■ Unit 3

- Processed remaining Class A material.
- Demobilized LRVI cutting equipment and secured operations until GTCC Waste loading campaign

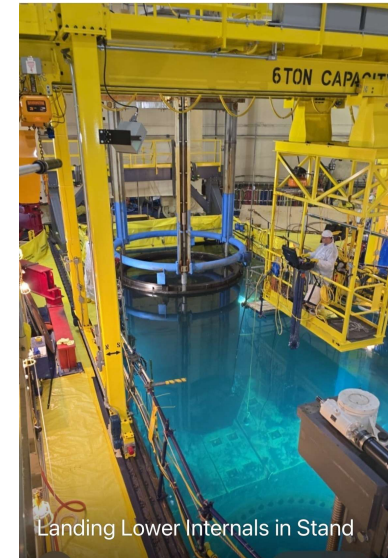
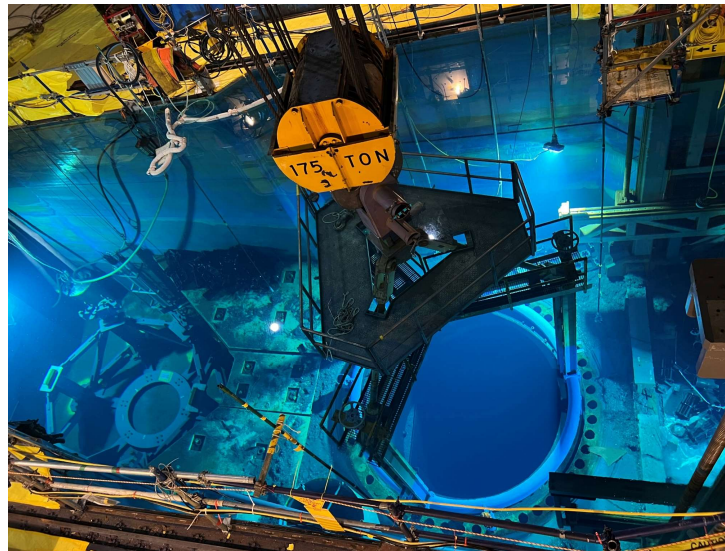
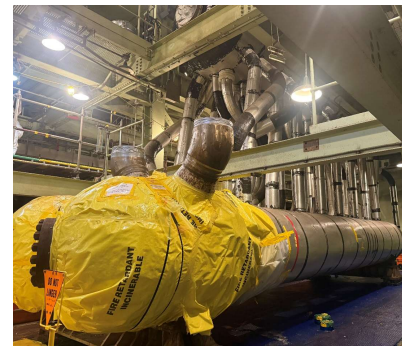
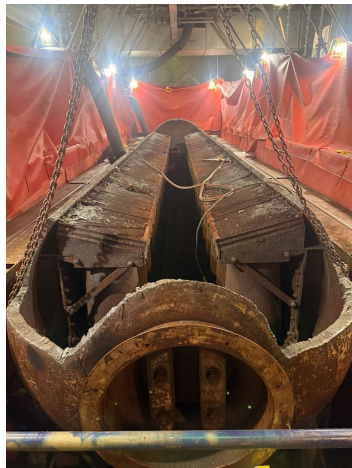
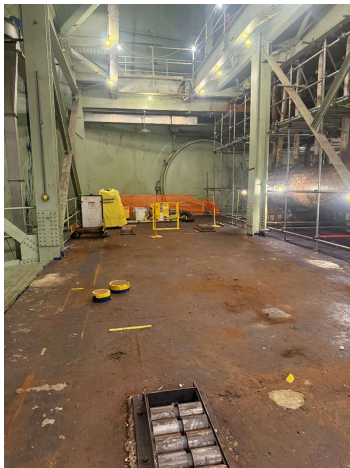


Photo: (L) U2 Lower Internals Removal, (R) U2 Lower Internals in stand

Unit 1 Demolition activities since last DOB

- 11 Boiler – removal (complete)
- 12 Boiler (upper)– torch cut demo
- 13 Boiler (lower) – saw cutting (in-progress)
- 14 Boiler – abatement tent (in-progress)
- Pressurizer – abatement (complete)



Various views of U1 Steam Generators

View of U1 Pressurizer Abated

U2 Mausoleum activities since the last DOB

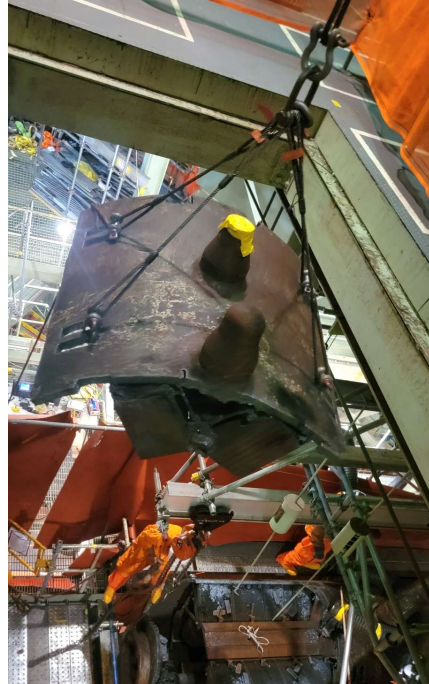
- South Wall Removal
- Removal of 2 Original Steam Generators
- Steel Installation for Segmentation



Views of the Mausoleum during work activities

Unit 1 & Mausoleum work activities through EOY

- Complete removal of 13 Boiler
- Complete removal of 12 boiler
- Complete Abatement of 14 Boiler
- Prep work for Pressurizer removal
- Prep work for tank removal
- Prep work of mausoleum to support original SG segmentation
- Segmentation of original SG in progress



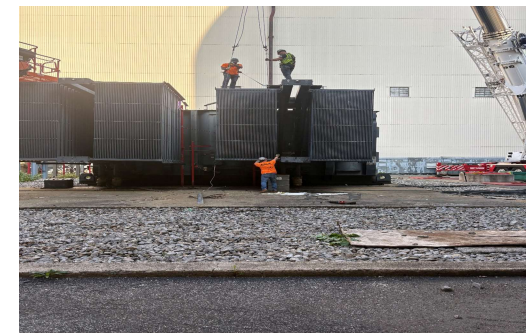
Top: U1 Rigging of Boiler Sections



Bottom: Additional roof steel at U2 Mausoleum

Conventional Plant Demolition activities since last DOB

- Power Conversion Equipment Building completed
- U3 Security Building demo completed
- U2 Main and Auxiliary Transformer demolition in progress
- U3 Main Transformers and Bus Duct demolition in progress



Top L: PCE Building Final Stages of Demo

Bottom L: U3 Access Facility Demo

Top R: 22 Main Transformer Coils and removed core pieces

Bottom R: 32 Main Transformer Cooling Coils Removal

Conventional Plant Demolition remaining activities

- Preparation for Old Steam Generator Dismantling
- Met Tower removal
- U2 and U3 Main Transformer Demolition
- Unit 1 Superheater Preps



Top L: South Wall removal

Top R: Met Tower

Bottom: 1st Steam Generator out of Mausoleum

NRC inspections and Reports

- 2nd Quarter report dated July 31, 2025
 - No violations listed
- Inspections
 - May 19-23, 2025
 - Plant walkdown / tours
 - Corrective Action Program Review
 - 50.59 Screening Reviews
 - Observations performed on radiation instrumentation source checks
 - July 21-24, 2025
 - Plant walkdown / tours
 - REMP Focus
 - Corrective Action Program Review
 - September 8-11, 2025
 - Plant walkdown / tours
 - Corrective Action Program Review

Training Building Property Cesium (Cs) Discovery

- As reported at the May DOB three localized zones which exhibited elevated Cs-137 activities were identified as requiring further investigation and remediation.
- Excavation of approximately 2100 sq. ft of soil to a depth of two feet was performed in April-May 2025. The excavated soil was disposed of per NRC regulatory requirements.
- **Next step:** full characterization of the excavated areas and surrounding areas is scheduled to begin in October. This will create a 3D excavation plan for final remedial excavation.
- Delineation of the areal extent and depth will use a combination of field activities using Geoprobe collection (10' deep core bores) and soil sample analysis onsite.
 - ✔ Sample design for this phase is consistent with NRC approved methodologies. (MARSSIM)
- After delineation, soil removal will occur as necessary, to meet the goal of remaining soil concentrations consistent with radiation background in the environment.
- Once the remedial goal is met, Final Status Surveys (FSS) will be completed to support a request to NRC for a “Partial Site Release” per 10CFR50.83, “Release of part of a power reactor facility or site for unrestricted use”.
 - ✔ NRC approval is required for the submittal.
 - ✔ NRC uses an independent expert laboratory to assess the FSS results.



EML = Elevated Measurement Location



Corporate Updates

■ Pat O'Brien



Thank You



Krishna P. Singh Technology Campus
1 Holtec Boulevard
Camden, NJ 08104
Tel: (856) 797-0900
www.holtec.com