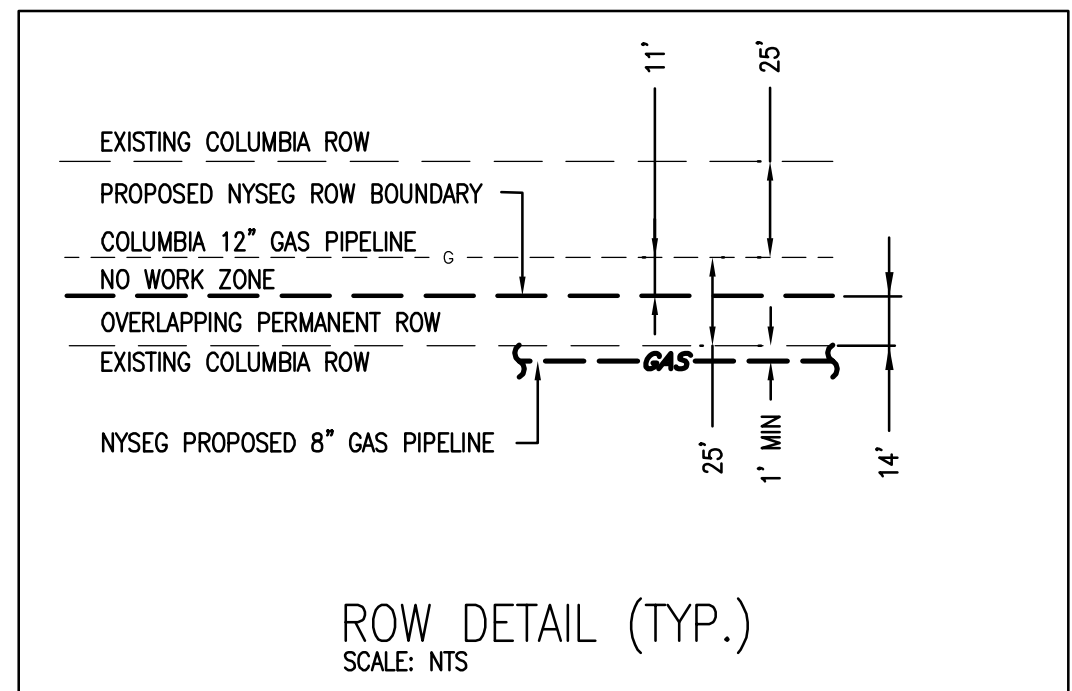
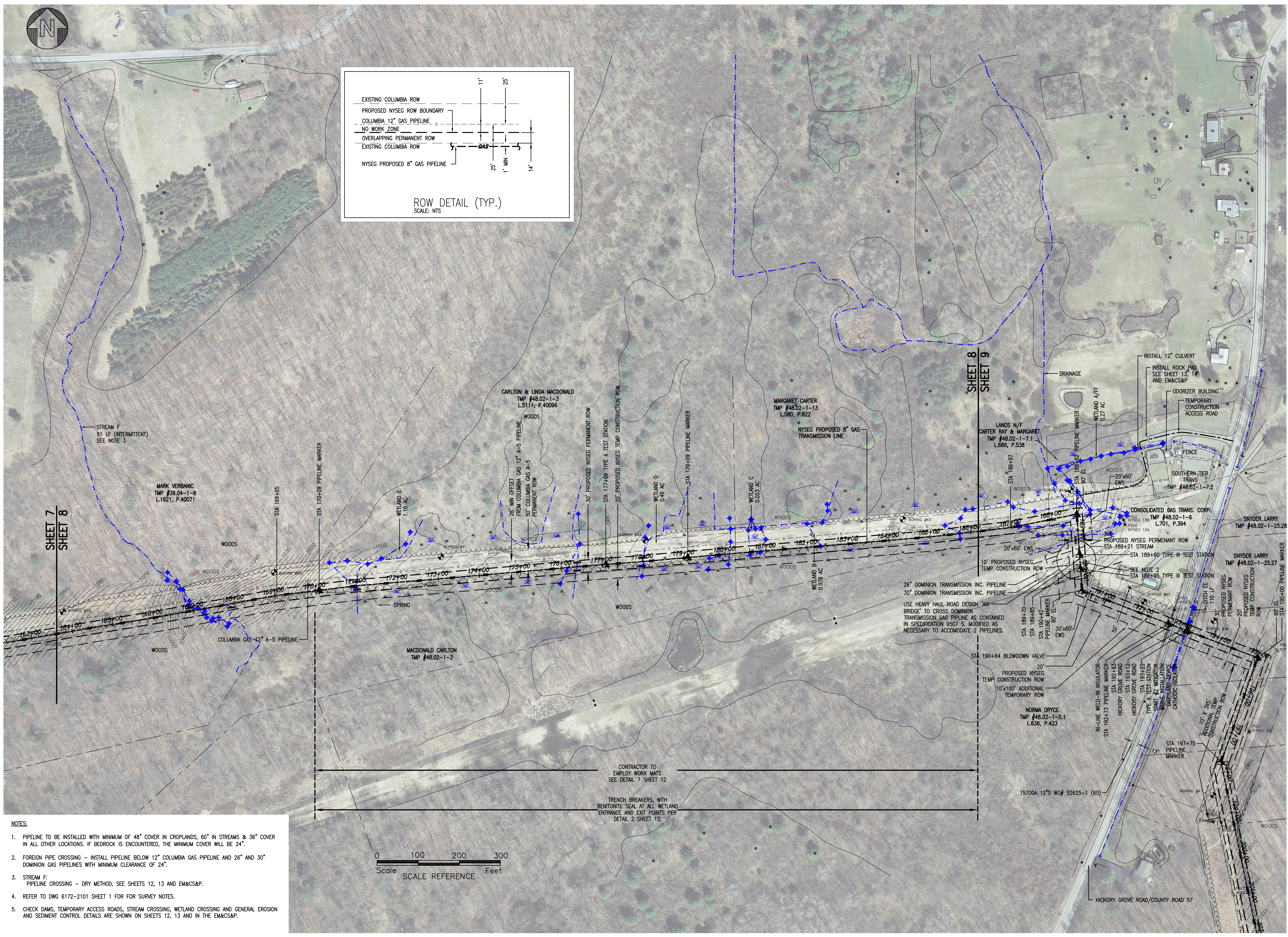


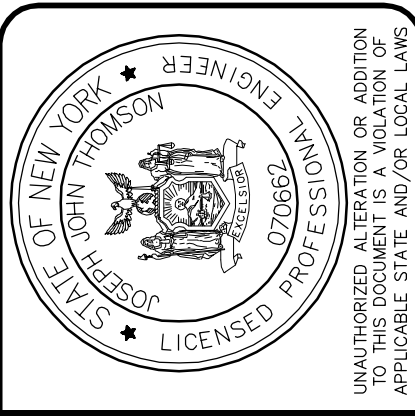
File: V:\PROJECTS\ANY\K2\2867\DATA\OTHER\BASE DRAWINGS\_110913\SENECA-8\_JMG\_CHA.DWG  
 Saved: 10/9/2012 7:57:12 AM Plotted: 10/9/2012 7:57:55 AM User: Markham, Gary LastSavedBy: 1393



- NOTES:**
- PIPELINE TO BE INSTALLED WITH MINIMUM OF 48" COVER IN CROPLANDS, 60" IN STREAMS & 36" COVER IN ALL OTHER LOCATIONS. IF BEDROCK IS ENCOUNTERED, THE MINIMUM COVER WILL BE 24".
  - FOREIGN PIPE CROSSING - INSTALL PIPELINE BELOW 12" COLUMBIA GAS PIPELINE AND 26" AND 30" DOMINION GAS PIPELINES WITH MINIMUM CLEARANCE OF 24".
  - STREAM F: PIPELINE CROSSING - DRY METHOD, SEE SHEETS 12, 13 AND EM&CS&P.
  - REFER TO DWG 6172-2101 SHEET 1 FOR SURVEY NOTES.
  - CHECK DAMS, TEMPORARY ACCESS ROADS, STREAM CROSSING, WETLAND CROSSING AND GENERAL EROSION AND SEDIMENT CONTROL DETAILS ARE SHOWN ON SHEETS 12, 13 AND IN THE EM&CS&P.

No.	By	Date
0	JH	10/20/12
1	JH	8/1/12

Submitted / Revision	App'd	Date
ISSUED FOR BID	JH	8/1/12
FINAL - ISSUED FOR BID	JH	8/1/12



SENECA WEST PIPELINE INTERCONNECT	Project No.: 22867	Scale: AS SHOWN
CIVIL ALIGNMENT PLAN	Issue Date: 04/2012	Drawn: DDL
	Designed: JH	Checked: JH

DWG NO:  
6172-2101  
SHEET 8 OF 29