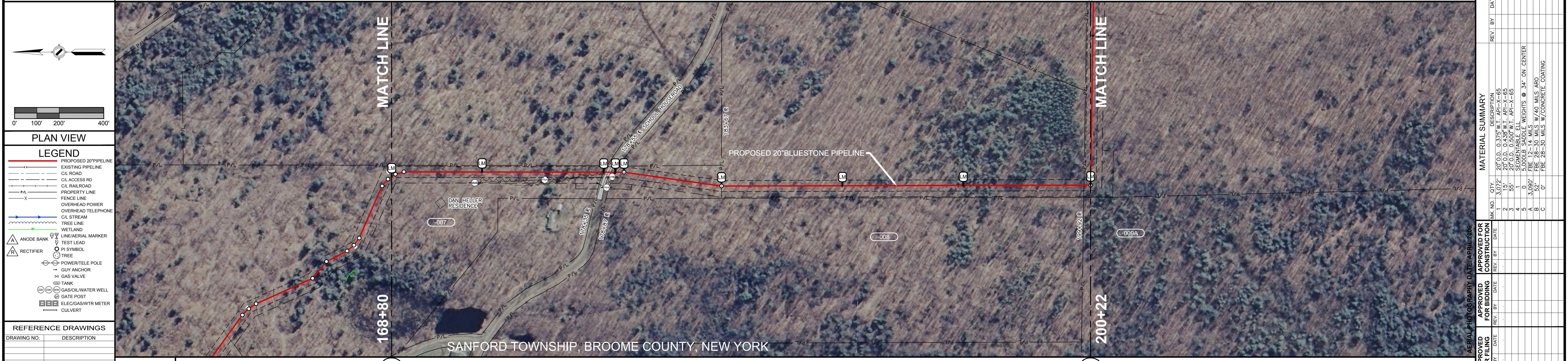


LINE LIST NO. OWNERSHIP FOOTAGE	PL-BS-NY-007 HELLER GAS, INC. AND ROBERT D. HELLER		RX-NY-002 SCHOOLHOUSE ROAD		PL-BS-NY-007 HELLER GAS, INC. AND ROBERT D. HELLER		PL-BS-NY-008 DEW DEC FARMS, INC.		PL-BS-NY-009 ANTHONY J. CALDERIO AND SALVATORE & THERESA CUSMANO, et ux		
	DOC# 955'	1 = 950 LF	DOC# 52'	2 = 5 LF	DOC# 480'	3 = 52 LF	DOC# 1,625'	1 = 2,122 LF	DOC# 30'	2 = 5 LF	3 = 3 LF
DESIGN	PIPE										
COATING	A = 955 LF										
WEIGHTS	B = 52 LF										
DESIGN FACTOR	0.72										
CLASS LOCATION	1										
ENVIRONMENTAL	STREAM										
WETLAND	AGRICULTURAL										
INVASIVE SPECIES											
LAND USE											
TOP SOIL SALVAGE											
MINIMUM COVER	3'										
THREATENED AND ENDANGERED SPECIES											

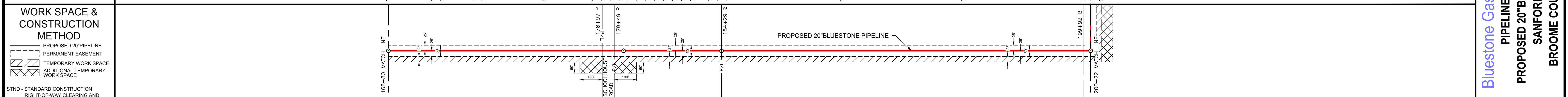
TRAVERSE ANGLES	168+00	169+00	178+97	179+49	184+29	189+97	194+92	200+22
	169+00 Δ 16°35'23" RT	169+40 Δ 16°35'23" RT	179+49 Δ 7°53'44" RT	184+29 Δ 8°08'38" LT	189+97 Δ 8°08'38" LT	194+92 Δ 8°08'38" LT	200+22 Δ 8°08'38" LT	200+22 Δ 8°08'38" LT



APPROVED FOR FILING	APPROVED FOR BIDDING	APPROVED FOR CONSTRUCTION
REV. BY: DATE	REV. BY: DATE	REV. BY: DATE

APPROVED FOR FILING	APPROVED FOR BIDDING	APPROVED FOR CONSTRUCTION
REV. BY: DATE	REV. BY: DATE	REV. BY: DATE

HORIZONTAL STATIONING	168+80	170+81	171+09	173+59	172+90	175+71	177+92	178+05	178+35	178+43	178+48	178+50	178+55	178+66	178+73	178+81	178+83	178+85	178+87	178+94	179+25	183+67	189+10	194+52	199+91	199+92	200+22
	MATCH LINE	HOUSE CORNER 138'RT	HOUSE CORNER 115'RT	POWER POLE 48'RT.	PROPOSED PIPELINE MARKER	POWER POLE 34'RT.	END WOODS	GUY ANCHOR 48'RT.	R. PROPOSED PIPELINE MARKER	BEGIN ASPHALT ROAD	POWER POLE 69'RT.	PROPERTY CORNER 30'LT.	SCHOOLHOUSE ROAD (ASPHALT)	END ASPHALT ROAD	POWER POLE 20'RT.	BEGIN WOODS	GUY ANCHOR	R. PROPOSED PIPELINE MARKER	GUY ANCHOR 20'RT.	OVERHEAD TELEPHONE (TWR 20' HIGH)	R. PROPOSED PIPELINE MARKER	PROPERTY CORNER 55'RT.	PROPOSED PIPELINE MARKER	PROPOSED PIPELINE MARKER	PROPERTY CORNER 55'RT.	R. PROPOSED PIPELINE MARKER	MATCH LINE



WORK SPACE & CONSTRUCTION METHOD	168+80	178+97	179+49	184+29	194+92	200+22
STND - STANDARD CONSTRUCTION	RIGHT-OF-WAY CLEARING AND GRADING. CLEAR VEGETATION AND PERFORM GRADING ONLY WITHIN CERTIFICATED AND STAKED CONSTRUCTION LIMITS.					
WET - WETLAND CONSTRUCTION	RIGHT-OF-WAY CLEARING AND GRADING. CUT VEGETATION OFF AT GROUND LEVEL, LEAVING ROOT SYSTEMS IN PLACE AND REMOVE VEGETATION FOR DISPOSAL. LIMIT PULLING TREE STUMPS AND GRADING ACTIVITIES DIRECTLY OVER TRENCH LINE.					
BORE -	SLOPE - FOR SLOPE GREATER OR EQUAL TO 25% SEE SECTION 7 OF EM & CS & P					

REVISIONS	REV. BY	DATE	DESCRIPTION
1			
2			
3			
4			
5			
6			
7			
8			
9			
10			