

PUBLIC INVOLVEMENT PROGRAM PLAN

High Bridge Wind Project
Chenango County, New York

Case 18-F-__

Prepared for:



Calpine Corporation
717 Texas Ave
Suite 1000
Houston, TX 77002
Contact: Mr. Alec Jarvis, Director of Development
Phone: (207) 956-1169

Prepared by:



Environmental Design & Research,
Landscape Architecture, Engineering & Environmental Services, D.P.C.
41 State Street, Suite 401
Albany, New York 12207
Contact: Greg Liberman
Phone: (315) 471-0688

April 2018

TABLE OF CONTENTS

1.0	INTRODUCTION	1
2.0	FACILITY DESCRIPTION.....	1
2.1	COMPANY PROFILE.....	1
2.2	FACILITY SUMMARY	2
2.3	STUDY AREA	3
3.0	IDENTIFICATION OF STAKEHOLDERS	3
3.1	AFFECTED STATE AND FEDERAL AGENCIES	4
3.2	LOCAL AGENCIES.....	5
3.3	MUNICIPALITIES AND SCHOOL DISTRICTS IN THE FACILITY AREA.....	6
3.4	MUNICIPALITIES AND SCHOOL DISTRICTS IN THE STUDY AREA	6
3.5	ADDITIONAL STAKEHOLDERS	6
3.6	HOST AND ADJACENT LANDOWNERS	7
3.7	PUBLIC INTEREST GROUPS.....	7
3.8	ENVIRONMENTAL JUSTICE COMMUNITIES THAT WILL BE AFFECTED BY THE PROPOSAL.....	7
4.0	LANGUAGE ACCESS	8
5.0	PROPOSED PUBLIC INVOLVEMENT PROGRAM	9
5.1	CONSULTATION WITH THE AFFECTED AGENCIES AND STAKEHOLDERS.....	10
5.2	PRE-APPLICATION ACTIVITIES TO ENCOURAGE STAKEHOLDER PARTICIPATION.....	11
5.3	ACTIVITIES TO EDUCATE THE PUBLIC ON THE PROPOSAL, PROCESS, AND FUNDING.....	12
5.4	WEBSITE	13
5.5	NOTIFICATIONS	14
5.6	ACTIVITIES TO ENCOURAGE STAKEHOLDER PARTICIPATION IN THE CERT. PROCESS	15
6.0	REQUIRED AIRPORT/HELIPORT PRE-APPLICATION CONSULTATION.....	15
7.0	REFERENCES	16

LIST OF TABLES

Table 1. Most Prevalent Non-English Languages Spoken in Study Area Zip Codes.....	8
Table 2. Schedule of Key Milestones.....	12

LIST OF FIGURES

Figure 1.	Facility Location Map
Figure 2.	Facility Area
Figure 3.	Study Area

LIST OF EXHIBITS

Exhibit A.	Notification List
Exhibit B.	Goals and Objectives for Stakeholder Involvement
Exhibit C.	Example PIP Tracking Log

TERM IDENTIFIERS

Adjacent Landowners – Entities owning parcels abutting the Facility Site or within 500 feet of a wind turbine.

Adjacent Municipalities – Municipalities outside the Facility Site, but within or intersecting with the Study Area.

Article 10 – The article of the New York State Public Service Law (PSL § 160 *et seq.*) under which proceedings, where an applicant seeking a Certificate of Environmental Compatibility and Public Need to operate a major electric generating facility, are conducted.

Facility Area – An area of land within which all Facility components will ultimately be located.

Facility Site – Those parcels currently under, or being pursued for, lease (or other real property interests) with the Applicant for the location of all Facility components.

Host Landowners – Entities owning parcels within the Facility Site.

Host Municipalities – All municipalities within or intersecting with the Facility Site.

NYSDEC – New York State Department of Environmental Conservation

NYSDPS – New York State Department of Public Service

NYSDAM – New York State Department of Agriculture and Markets

PIP – Public Involvement Program plan - A series of coordinated activities that provides a variety of effective public participation opportunities by which public concerns can be identified as early as possible throughout the various stages of the decision-making process, ensures communication between stakeholders and an applicant, and results in education of the public as to the specific proposal and the Article 10 process. See 16 NYCRR § 1000.2(ah).

Public Interest Groups – Non-governmental organizations with a presence in the area and having core missions related to environmental stewardship, economic sustainability, wind energy development, etc.

Siting Board – New York State Board on Electric Generation Siting and the Environment.

Stakeholders – Those persons who may be affected or concerned by any issues within the Board's jurisdiction relating to the proposed major electric generating facility and any decision being made by it. See 16 NYCRR 1000.2(an).

Study Area – The area within a radius of five miles from all generating facility components, interconnections and related facilities. See 16 NYCRR 1000.2(ar).

1.0 INTRODUCTION

High Bridge Wind, LLC (“the Applicant” or “High Bridge Wind”), a wholly-owned subsidiary of Calpine Corporation (“Calpine”), is proposing to submit an Application to construct a major electric generating facility under Article 10 of the New York Public Service Law. Pursuant to the rules of the New York State Board on Electric Generation Siting and the Environment (“Siting Board”), applicants proposing to submit an Application to construct a major electric generating facility must first submit a Public Involvement Program plan (“PIP”). Under 16 NYCRR § 1000.4, the PIP must be submitted to the Department of Public Service (“DPS”) for review at least 150 days prior to filing a Preliminary Scoping Statement (“PSS”). This document is intended to serve as the PIP for the High Bridge Wind Project (“the Facility”). The Facility is intended to be an approximately 100-megawatt (“MW”) wind powered electric generating facility in the Town of Guilford, Chenango County, New York (Figure 1).

As required under 16 NYCRR § 1000.4, the Applicant’s PIP includes the following components:

- (1) Consultation with affected agencies and other stakeholders;
- (2) Pre-application activities to encourage stakeholders to participate at the earliest opportunity;
- (3) Activities designed to educate the public about the Facility and the Article 10 review process, including the availability of funding for municipal and local parties;
- (4) The establishment of a website to disseminate information and updates to the public regarding the Facility and the Article 10 process;
- (5) Notifications to affected agencies and other stakeholders; and
- (6) Activities designed to encourage participation by stakeholders in the certification and compliance process.

2.0 FACILITY DESCRIPTION

2.1 COMPANY PROFILE

The Applicant is a wholly-owned subsidy of Calpine Corporation. Headquartered in Houston, Texas, with customers from 21 states and Canada, Calpine is the U.S.’s largest generator of electricity from natural gas and geothermal resources. Calpine is a Fortune 500 company with a track record of financial performance, a strong balance sheet, and ready access to capital for development, construction and operations. Calpine specializes in developing, constructing, owning, and operating generation assets that use advanced technologies to produce power in a low-carbon and environmentally responsible manner. In early 2015, Calpine launched a new development group with the goal of being a long-term owner and operator of wind

energy projects throughout the United States. Calpine's wind development team has more than 40 years of experience and has developed over 2,500 megawatts of greenfield wind energy projects that are in operation currently. For more information on other Calpine wind projects in New York State see <http://www.calpine.com/operations/commercial-operations/development/new-york-wind-projects>.

2.2 FACILITY SUMMARY

The High Bridge Wind Project is anticipated to have a nameplate capacity of 100 MW¹. The Facility will be located within the Town of Guilford, Chenango County, New York on leased lands that are rural in nature. Proposed Facility components will be sited to enable landowners to continue existing land uses, such as agriculture, forestry operations, mining, and hunting.

The proposed Facility will include the installation and operation of up to 30 wind turbines, together with the associated collection lines (below grade and overhead), access roads, meteorological towers, and operation and maintenance (O&M) building. To deliver electricity to the New York State power grid, the Applicant proposes to construct a collection substation, a 115-kV electrical transmission line, and a point of interconnect (POI) substation that will interconnect with NYSEG's Jennison to East Norwich 115 kV transmission line in the Town of Guilford. As with the Bluestone Wind Project, the Applicant is proposing to install battery storage at the POI substation.

The proposed Facility will have positive impacts on socioeconomics in the area. In the United States it is estimated that a 50 MW wind project will create 40 full-time equivalent jobs during the construction period² and two long-term full-time jobs for every 10-20 turbines during the operation period (NYSERDA, 2017). Most jobs created by the Facility will likely be drawn from the Chenango County and the Southern Tier labor market. In addition, the Facility will positively impact socioeconomics through payment in lieu of taxes (PILOT) payments to municipalities, landowner lease agreement revenues, and the purchase of local services and goods. A review of baseline socioeconomic data from similar projects in New York State suggests economic impacts of \$9.71 to \$10.66 per MWh generated by the Facility (NYSERDA, 2005).³

¹ Providing enough electricity for 30,000 to 45,000 households, based on average annual electric consumption rates of 10.8 MWh and 7.1 MWh per household for the United States and New York State, respectively, and an average wind energy capacity factor of 36.7% (EIA, 2017; EIA, 2018).

² Construction jobs may be less than full-time; these estimates under-represent the total number of people hired.

³ This range does not include energy price suppression or economic activity associated with increased personal spending power of those affected by a project (multiplier effect). Preliminary figures indicate that the multiplier can approach 1.3 for direct spending in rural New York counties.

2.3 STUDY AREA

Per 16 NYCRR § 1000.2(ar), the Study Area to be used for analysis of major electric generating facilities is defined as “an area generally related to the nature of the technology and the setting of the proposed site. For large facilities or wind power facilities with components spread across a rural landscape, the study area shall generally include the area within a radius of at least five miles from all generating facility components, interconnections and related facilities and alternative location sites.” The Study Area for the Facility includes the Towns of Guilford, Norwich, Oxford, New Berlin, Preston, Bainbridge, the Village of Oxford, and the City of Norwich in Chenango County; and the Towns of Morris, Butternuts, Unadilla, and the Village of Gilbertsville in Otsego County (see Figure 3).

With respect to the Facility Area and Study Area presented in this PIP, it should be noted that the selection of appropriate sites for a wind-powered electric generation facility is constrained by numerous factors that must be simultaneously balanced for a given project to operate in a technically and economically viable manner. Availability and quality of the wind resource and proximity to bulk power transmission systems are the initial screening criteria evaluated in the site selection process for any wind power project. The Applicant's initial evaluation was based on publicly available data (e.g., the *Wind Resource of New York, Mean Annual Wind Speed at 100 Meters* map prepared by AWS Truewind), site visits, and a capacity analysis of nearby transmission lines. This initial evaluation indicated the wind resource in Chenango County is suitable and access to bulk power transmission systems is adequate. Other factors that increase the suitability of the proposed Facility Area include willing host landowners and municipalities and preliminary environmental reviews that indicate no significant wildlife or unique natural habitat concerns.

3.0 IDENTIFICATION OF STAKEHOLDERS

The first step in designing a PIP is determining who may be affected by the proposed Facility. The Applicant identified affected agencies and municipalities, utilities, host landowners, and other stakeholders based on: a review of the Article 10 regulations; DPS guidance; prior Article 10 PIP submissions; reviews of County GIS data, tax records, and personal visits; consultation with local municipal representatives; and other research efforts. The Applicant considered the following in identifying affected agencies and other stakeholders:

- The potential location of all Facility components within the Facility Area, including the POI;
- The definition of “Local Party” in 16 NYCRR §1000.2(s);
- The definition of “Affected Agencies” in 16 NYCRR § 1000 et seq;
- Host landowners and municipalities;
- Adjacent landowners and municipalities;

- State and federal elected officials representing the host and adjacent municipalities; and
- Public interest groups.

A list of all known stakeholders is included as part of the Notification List⁴ (see Exhibit A). This list of stakeholders was developed based on the efforts described above. Sections 3.1 through 3.9, below, identify stakeholders by category. Updates will be provided in pending Article 10 submissions (e.g., the Preliminary Scoping Statement and the Article 10 Application).

No state forest lands are located within the Facility Area; however, state forest lands within the Study Area are listed below:

- Lyon Brook State Forest
- Basswood State Forest
- Wiley Brook State Forest
- South Hill State Forest
- Ambler State Forest

These lands are managed by NYSDEC under the Between Rivers Unit Management Plan (UMP). As initial project consultations proceed, the Applicant will review the UMP and consult with NYSDEC to identify other potential stakeholders.

3.1 AFFECTED STATE AND FEDERAL AGENCIES

Empire State Development Corporation
 National Telecommunications and Information Administration
 New York Independent System Operator
 New York State Energy Research and Development Authority
 NYS Attorney General
 NYS Department of Agriculture and Markets
 NYS Department of Environmental Conservation
 NYS Department of Health
 NYS Department of Public Service

⁴ This list includes stakeholders and all known, potentially interested parties and their contact information. The Notification List is a living document that will be updated as necessary, based on information received during PIP activities (e.g., public meetings and from the Facility website). No limits will be placed on the parties that can be added to the Notification List. Updates to this list will be provided in pending Article 10 submissions (e.g., the Preliminary Scoping Statement and the Article 10 Application).

NYS Department of State
NYS Department of Transportation
NYS Division of Homeland Security and Emergency Services
NYS Governor's Office
NYS Office of Parks, Recreation and Historic Preservation
State Assemblyman Clifford Crouch, Assembly District 122
State Senator Fred Akshar II, 52nd Senate District (Towns of Oxford, Preston, Guilford, Norwich, Bainbridge)
United States Department of Defense
United States Federal Aviation Administration
US Army Corps of Engineers
US Congressman Claudia Tenney, District 22 (Chenango County)
US Department of Defense
US Federal Aviation Administration
US Fish and Wildlife Service
US Senator Charles E. Schumer
US Senator Kirsten E. Gillibrand

3.2 LOCAL AGENCIES

Chenango County Bureau of Fire and Emergency Management
Chenango County Department of Public Works
Chenango County Farm Bureau
Chenango County Highway Department
Chenango County Parks and Recreation
Chenango County Planning and Development
Chenango county Public Health
Chenango County Soil and Water Conservation District
Cornell Cooperative Extension, Chenango County
County of Chenango Industrial Development Agency
Guilford Fire Department
Guilford Highway Department
Norwich Department of Public Works
Norwich Fire Department
Norwich Planning and Community Development
Otsego County Farm Bureau

Otsego County Soil and Water Conservation District

3.3 MUNICIPALITIES AND SCHOOL DISTRICTS IN THE FACILITY AREA

Bainbridge-Guilford Central School District

Chenango County

Gilbertsville-Mount Upton Central School District

Norwich City School District

Town of Guilford

3.4 MUNICIPALITIES AND SCHOOL DISTRICTS IN THE STUDY AREA

City of Norwich, Chenango County

Unatego Central School District

Otsego County

Oxford Academy and Central School District

Sidney Central School District

Town of Bainbridge, Chenango County

Town of Butternuts, Otsego County

Town of Morris, Otsego County

Town of New Berlin, Chenango County

Town of Oxford, Otsego County

Town of Preston, Chenango County

Town of Unadilla, Otsego County

Unadilla Valley Central School District

Village of Gilbertsville, Otsego County

Village of Oxford, Chenango County

3.5 ADDITIONAL STAKEHOLDERS

Enterprise Projects Partners L.P.

Lt. Warren Eaton Airport

New York State Electric and Gas (NYSEG)

Oneida Indian Nation

Sidney Municipal Airport

Tuscarora Indian Nation

3.6 HOST AND ADJACENT LANDOWNERS

Host landowners are landowners owning parcels within the Facility Site⁵. Adjacent landowners are landowners owning parcels abutting the Facility Site or within 500 feet of a wind turbine. The identities of potential host and adjacent landowners were gathered from County GIS records, tax records, and personal visits by representatives of the Applicant. This list of host and adjacent landowners will be refined as the Facility layout evolves in response to input from stakeholders and field data (e.g., wetland delineations). Therefore, specific host and adjacent landowner information is not included in this PIP. Additional information will be submitted with the PSS, as required by 16 NYCRR § 1000.5; however, to preserve confidentiality, this information may be anonymized by address or tax parcel identification number and may not include names.

3.7 PUBLIC INTEREST GROUPS

Audubon Society - Delaware Otsego Chapter

New York Agricultural Land Trust

New York Public Interest Research Group (NYPIRG) - Binghamton Chapter

Sierra Club Susquehanna Group

Southern Tier East Regional Planning and Development Board

Susquehanna River Basin Commission

The Nature Conservancy - Eastern NY

The Wetlands Trust

Upper Susquehanna Conservation Alliance

Upper Susquehanna Conservation Alliance

3.8 ENVIRONMENTAL JUSTICE COMMUNITIES THAT WILL BE AFFECTED BY THE PROPOSAL

The Facility will be subject to the rules contained in 6 NYCRR Part 487. This law was promulgated by the NYSDEC for the analysis of environmental justice issues associated with Article 10 projects.

Per NYSDEC Environmental Justice Policy CP-29, Potential Environmental Justice Areas include census block groups featuring populations that meet or exceed at least one of the following statistical thresholds:

1. At least 51.1% of the population in an urban area reported themselves to be members of minority groups; or

⁵ Note: The Facility Site includes those parcels currently under, or being pursued for, lease (or other real property interests) with the Applicant for the location of all Facility components.

2. At least 33.8% of the population in a rural area reported themselves to be members of minority groups; or
3. At least 23.59% of the population in an urban or rural area had household incomes below the federal poverty level.

Based on data obtained from the NYSDEC's *Geospatial Information System (GIS) Tools for Environmental Justice* website (www.dec.ny.gov/public/911.html), there are no Potential Environmental Justice Areas within the Study Area. The nearest Potential Environmental Justice Area is approximately 1 mile from the Study Area boundary in the Village of Sidney (Delaware County), and 6 miles from the Facility Area. Further discussion of Environmental Justice will be provided in the PSS and the Application (Exhibit 28) pursuant to the Article 10 requirements set forth at 1000.5(l)(2)(xi).

4.0 LANGUAGE ACCESS

Per 16 NYCRR § 1000.4(d), Article 10 requires the PIP to identify (1) any language other than English spoken by 5,000 or more persons residing in any 5-digit zip code that intersects the Study Area and (2) any language other than English spoken by a significant population of persons residing near the proposed Facility Area. Twelve 5-digit zip codes intersect the Study Area. No non-English language is spoken by more than 5,000 people residing in any 5-digit zip code within the Study Area⁶ (see Table 1).

Table 1. Most Prevalent Non-English Languages Spoken in Study Area Zip Codes

Zip Code	Language	Number of Speakers
13815	Other Indo-European Languages	253
13843	Spanish or Spanish Creole	15
13411	Other Indo-European Languages	45
13776	Spanish or Spanish Creole	19
13808	Other Indo-European Languages	16
13825	Other Indo-European Languages	40
13849	Other Indo-European Languages	47
13838	Spanish or Spanish Creole	140
13733	Other Indo-European Languages	130
13830	Spanish or Spanish Creole	167
13809	Spanish or Spanish Creole	19
13780	Other Indo-European Languages	38

Source: http://www.mla.org/map_data and American Community Survey 2012-2016 5-Year Estimates

⁶ As per U.S. Census Bureau data.

The Study Area contains portions of Chenango and Otsego Counties. Chenango County is a host municipality, Otsego County is an adjacent municipality. Chenango and Otsego counties have, respectively, 46,702 and 58,420 residents over the age of 4, of which 1,554 (3.3%) and 3,525 (6.0%) speak a language other than English at home.

5.0 PROPOSED PUBLIC INVOLVEMENT PROGRAM

According to 16 NYCRR § 1000.4(c), a Public Involvement Program must include: (1) consultation with the affected agencies and other stakeholders; (2) pre-application activities to encourage stakeholders to participate at the earliest opportunity; (3) activities designed to educate the public as to the specific proposal and the Article 10 review process, including the availability of funding for municipal and local parties; (4) the establishment of a website to disseminate information to the public; (5) notifications; and (6) activities designed to encourage participation by stakeholders in the certification and compliance process. It is anticipated that this will be an ongoing, evolving process throughout all phases of the Article 10 review process (pre-application phase, application phase, hearing and decision phase, and post-certification phase). The intent of the PIP is to disseminate Facility information to stakeholders, ascertain stakeholder interests, identify any additional stakeholders with interests potentially impacted by the project, solicit information from stakeholders through public outreach, and foster participation in the Article 10 review process. The Applicant has recently established a user-friendly website in plain English that describes the Facility and provides updates (www.highbridgewind.com) (see Section 5.4 below for additional detail).

Please note the following Applicant contact information and document repositories:

- Facility Representative (for the public and stakeholders to contact with questions, concerns, etc.):
Mr. Alec Jarvis, Director of Development, Calpine Corporation
Address: 717 Texas Avenue, Suite 1000, Houston, TX, 77002
Phone: (207) 956-1169
Email: Alec.Jarvis@calpine.com
- Toll Free Number: 1-866-681-3312
- Local Document Repositories:
 - Guildford Town Hall, 223 Marble Road, Guilford, NY 13780. Monday – Wednesday, and Friday 9 AM – 1 PM; Thursday 4 PM – 6:30 PM; Saturday 9 AM – 12 PM.
 - Guernsey Memorial Library, 3 Court Street, Norwich, NY 13865. Patron hours are Monday – Thursday 9 AM – 8:30 PM; Friday 9 AM – 6 PM; Saturday 9 AM – 4 PM and Sunday 1 PM – 4 PM.

The Applicant does not propose a local project office at this time. Should one be established, its location and office hours would be posted to the website and provided to the public as appropriate.

Inquiries received by telephone or email to the project team will be returned as soon as reasonably practicable, and generally within 3-5 business days. If additional time is required to respond to an inquiry, an acknowledgement will be provided which indicates a response is forthcoming. Where the information sought is not available, such as the results of studies not yet completed, the Applicant will provide a response estimating when the requested information should become available in the future.

5.1 CONSULTATION WITH THE AFFECTED AGENCIES AND STAKEHOLDERS

The Applicant's consultation with affected agencies and municipalities will include:

1. An initial consultation with each agency or municipality to improve awareness of the Facility, explain the Article 10 process, request and disseminate information, and provide contact information for any follow-up;
2. Follow-up, as needed, to provide project updates, answer specific questions or concerns about the Facility, and identify the applicable studies and impact analyses to be performed and how they pertain to the Facility; and
3. Other actions required by the Article 10 regulations or needed to inform the process.

Specific information provided in the initial consultation to the affected agencies and municipalities will include a description of the Facility and its location; an explanation of the phases of the Article 10 process and how the agency or municipality can participate in each step; a description of the availability and process for obtaining Intervenor Funding; a description of the ad hoc committee process and local municipal responsibility; information about other planned consultations; and sources of additional information about the Facility and Article 10 (e.g., the Facility and Siting Board websites). Information requested from affected municipalities and agencies will vary based on involvement (e.g., host versus adjacent municipality), but may include: details specific to potential agreements (e.g., payment in lieu of taxes and highway work), local laws, emergency response organizations, environmental impact reviews, contact information for public interest groups, identification of public interest or community groups that should be added as stakeholders, and determination of which news sources are used for official notices.

As indicated in Section 1.0, the PIP must be submitted at least 150 days prior to the PSS. It should be noted that, in accordance with 16 NYCRR 1000.5(g), comments on the PSS are due within 21 days of its filing with the NYSDPS Secretary to the Commission ("Secretary"). The Applicant intends to engage municipalities, agencies, and stakeholders throughout the PIP implementation process to identify their respective interests and obtain information regarding resources, locations, concerns, and recommendations. Prior to filing the PSS, this will be accomplished through a variety of means, including public information sessions, direct correspondence, reviews of comments submitted on the website, and targeted meetings with some of the stakeholders identified in the PIP. Throughout these activities, the Applicant will provide stakeholders with the approximate schedule for PSS submission and highlight the 21-day public comment period.

Exhibit B lists the affected agencies, municipalities, and interested parties identified to date, the goals and objectives of consulting with these entities, and the plan for achieving these goals (e.g., who will receive the direct correspondence, when and for what purpose). Note, consultation with many of these agencies and municipalities has begun, including consultation with the Guilford Town Board, the USFWS, the NYSDEC, the Delaware-Otsego Audubon Society (DOAS), and the NYSDAM. Meetings with local landowners to discuss the leasing process have been ongoing.

Consultation will be deemed successful if (1) the appropriate information about the Facility and the Article 10 process is provided to agency and municipality representatives, (2) the relevant information requested by the Applicant is received, (3) the Applicant is able to determine the interests and address concerns of stakeholders throughout the permitting and development process, and (4) follow up meetings or consultations are scheduled, as needed.

5.2 PRE-APPLICATION ACTIVITIES TO ENCOURAGE STAKEHOLDER PARTICIPATION

The Applicant has engaged in pre-application activities to encourage stakeholder participation since 2017. These activities include:

- Two meetings with the Guilford Town Board
- Consultation with the Town Supervisor
- Transmittal of preliminary workplans to USFWS, DEC, and DOAS
- Code of conduct consultation with NYSDAM
- Meeting with state legislators with districts intersecting the proposed Facility Area⁷

⁷ State legislators, or staffers representing them, were present at the meeting.

The Applicant will continue pre-application activities to encourage stakeholder participation, as set forth in the Agency/Municipality Consultations table included in Exhibit B. This table will be updated as consultations and stakeholder participation activities take place and additional means of engagement are identified (as necessary). Generally, activities to encourage stakeholder participation during the pre-application phase will include public meetings, attendance at municipal meetings and local events as appropriate, maintenance of an updated website, publication of notices and dissemination of information about the project, as described more fully in the relevant sections of this PIP.

5.3 ACTIVITIES TO EDUCATE THE PUBLIC ON THE PROPOSAL, PROCESS, AND FUNDING

The Applicant has attended and plans to continue to attend Town meetings, is planning Applicant-sponsored public information sessions, will be distributing educational materials, and is developing a Facility website. The Facility website will offer information on the proposed Facility, as well as links to and information regarding the Article 10 process, Intervenor Funding, and other important stakeholder issues. These efforts will allow the Applicant to engage with all applicable stakeholders and will offer multiple avenues of information, so stakeholders and the public have the best chance to obtain the right information and participate. These efforts are discussed in further detail below.

Table 2. Schedule of Key Milestones

Key Milestone	Date/Time	Milestone Details, Including Notification Summary
Public Information Session	Summer/Fall 2018 (prior to PSS Filing)	<ul style="list-style-type: none"> - To be held in the Town of Guilford. - Notice of the session will be published in the <i>Evening Sun</i>⁸, posted to the Facility website, and sent via mail to stakeholders on the Notification List.
Filing of PSS	Three days before filing	- Notice of the Applicant's PSS filing, a summary of the PSS, and other information required in the Article 10 regulations will be published in the <i>Evening Sun</i> , posted on the Facility website, and served as per 16 NYCRR § 1000.5(e) on all parties identified in said regulations.
	Day of filing	<ul style="list-style-type: none"> - Printed hardcopies of the PSS will be served on all parties identified in 16 NYCRR § 1000.5(c). - Printed hardcopies will be provided to the local repositories identified in this section.
Public comment on PSS	Within 21 days of PSS filing	- Public comments on the PSS will be served to the Applicant within 21 days of PSS filing.
Applicant's Response to PSS Comments	Within 21 days of comment period ending	The Applicant's responses to public comments on the PSS will be served on those identified in 16 NYCRR § 1000.5(c) within 21 days of the comment period ending.

⁸ The Evening Sun is designated for the publication of official notices in the Town of Guilford and is the newspaper with the largest circulation in Chenango County.

Key Milestone	Date/Time	Milestone Details, Including Notification Summary
Additional Public Information Session	Prior to Application Filing	<ul style="list-style-type: none"> - To be held in the Town of Guilford. - Notice of the session will be published in the <i>Evening Sun</i>, posted to the Facility website, and sent via mail to stakeholders on the Notification List.

5.3.1 Public Information Sessions

The Applicant intends to hold at least two public information sessions prior to submittal of the PSS. Public information sessions will be scheduled for the summer or fall of 2018 and may include multiple sessions (e.g., afternoon and evening), if necessary. Applicant representatives will be present to answer questions and provide preliminary information on regarding the Facility.

The Applicant will notify all parties on the Notification List via mail or email of these and all other public information sessions held by the Applicant. These information sessions also will be properly noticed in the *Evening Sun* (a minimum of 14 days in advance) and the Facility website (www.highbridgewind.com). In addition, as suggested by Town officials, information regarding pending public information sessions will be posted in the Guilford Town Hall.

5.3.2 Educational Materials

The Applicant will develop educational materials to inform the public about wind-generated energy, the proposed Facility, the Article 10 process, and Intervenor Funding. These materials will include poster-sized maps and graphics that will be displayed at public information sessions and factsheets or brochures that will be distributed through public information sessions, document repositories, and the Facility website. These materials will include links to Siting Board and Facility websites and the project case number. Representative examples of educational materials will be posted to the project website and submitted to the record in this proceeding.

5.4 WEBSITE

The Applicant has recently established a user-friendly website in plain English that describes the Facility (www.highbridgewind.com). While still under development, this website ultimately will contain the following information:

- Facility description;
- Facility benefits and need;
- Summary of permitting requirements;

- Links to the Siting Board Article 10 Public Information Coordinator, the Siting Board home page, and case-specific documents;
- Information on the Article 10 process and public participation options;
- Instructions on how to become a party to these proceedings or join the Notification List, with a link to appropriate webpage;
- Summary of the Intervenor Funding process and how to apply;
- Facility contact information, including email address and toll-free telephone number;
- Copies of Article 10 law, regulations, and related licensing documents;
- A schedule that lists dates/times/locations for outreach events and key milestone dates, such as when the application will be filed; and
- Addresses of local document repositories.

This information will be updated, as necessary (e.g., Facility layout figures will be updated as the Facility layout develops and is finalized). As indicated above, the website includes Facility contact information. To the extent practicable, the Applicant will respond to all substantive comments within five business days; correspondence will be documented.

5.5 NOTIFICATIONS

The Article 10 regulations establish the notification requirements for serving documents. Pursuant to 16 NYCRR § 1000.7, the Applicant will publish all required notices in the *Evening Sun*. As stated above, the *Evening Sun* is the designated publication for official notices in the Town of Guilford and is the newspaper with the largest circulation in Chenango County.

No less than three days before filing of the PSS and Application, the Applicant will publish a summary of the respective documents in the *Evening Sun*. Written notice shall be provided to members of the State Legislature in whose district the Facility is proposed to be located, members of the Notification List, and entities who have filed a statement with the Secretary within the past twelve months stating they wish to receive such notices. Copies of the PSS will be served to all parties identified in 16 NYCRR § 1000.5(c). All other notices required by the Presiding Examiner or Article 10 will be published in the manner prescribed by these entities. All public information sessions will be appropriately noticed in the *Evening Sun*.

5.6 ACTIVITIES TO ENCOURAGE STAKEHOLDER PARTICIPATION IN THE CERTIFICATION PROCESS

Beyond the activities described above in Sections 5.1 through 5.5, the Applicant will identify additional, practical measures to encourage stakeholder participation during the certification and compliance process. It is anticipated that this will be an ongoing, evolving process throughout all phases of the Article 10 review process (pre-application phase, application phase, hearing and decision phase, and post-certification phase).

The Applicant will track its Public Involvement Program and provide regular updates to DPS Staff. Specifically, the Applicant will maintain a Meeting Log that will provide specifics on all meetings, including dates, locations, attendees, purpose, and follow-up action items. An example Meeting Log is included as Exhibit C of this document.

The Applicant will hold an additional public information session(s) and/or will conduct other appropriate outreach prior to filing the Article 10 Application. In addition, the Facility website will be updated regularly with Facility developments, information sessions, and announcements to keep stakeholders and the public informed. The Article 10 Application will include information on the proposed method for addressing inquiries and concerns raised by members of the public during construction, operation, and decommissioning of the Facility, such as through a Compliant Resolution Plan or other document.

6.0 REQUIRED AIRPORT/HELIPORT PRE-APPLICATION CONSULTATION

Pursuant to 16 NYCRR § 1001.25(e) and (f), the Applicant shall coordinate with the Federal Aviation Administration, the Department of Defense, and the National Telecommunications and Information Administration to confirm possible affected airports or heliports near the Facility, or potential impacts to communications infrastructure, radar, or air traffic control. Each federal entity will be contacted via phone call and/or letter to identify the operators and/or appropriate contact person.

Once the proper operator/representative is determined, the outreach to the operator of the public and private airport or public heliport will include another phone call, a follow-up letter, and, if necessary, a meeting to provide Facility-specific information. The Facility-specific information to be provided will include: a detailed map showing the Study Area, Facility Area, and location of Facility components; coordinates and dimensions of each proposed turbine; a description of the Facility construction and operation phases; and a request for review of and comment. Outreach to the Department of Defense will include an initial screening with a follow-up review of the proposed Facility, if required. It should be noted that the proposed Facility is located more

than 50 miles from the nearest military installation that uses airspace for its operations (Griffiss Air Force Base).

7.0 REFERENCES

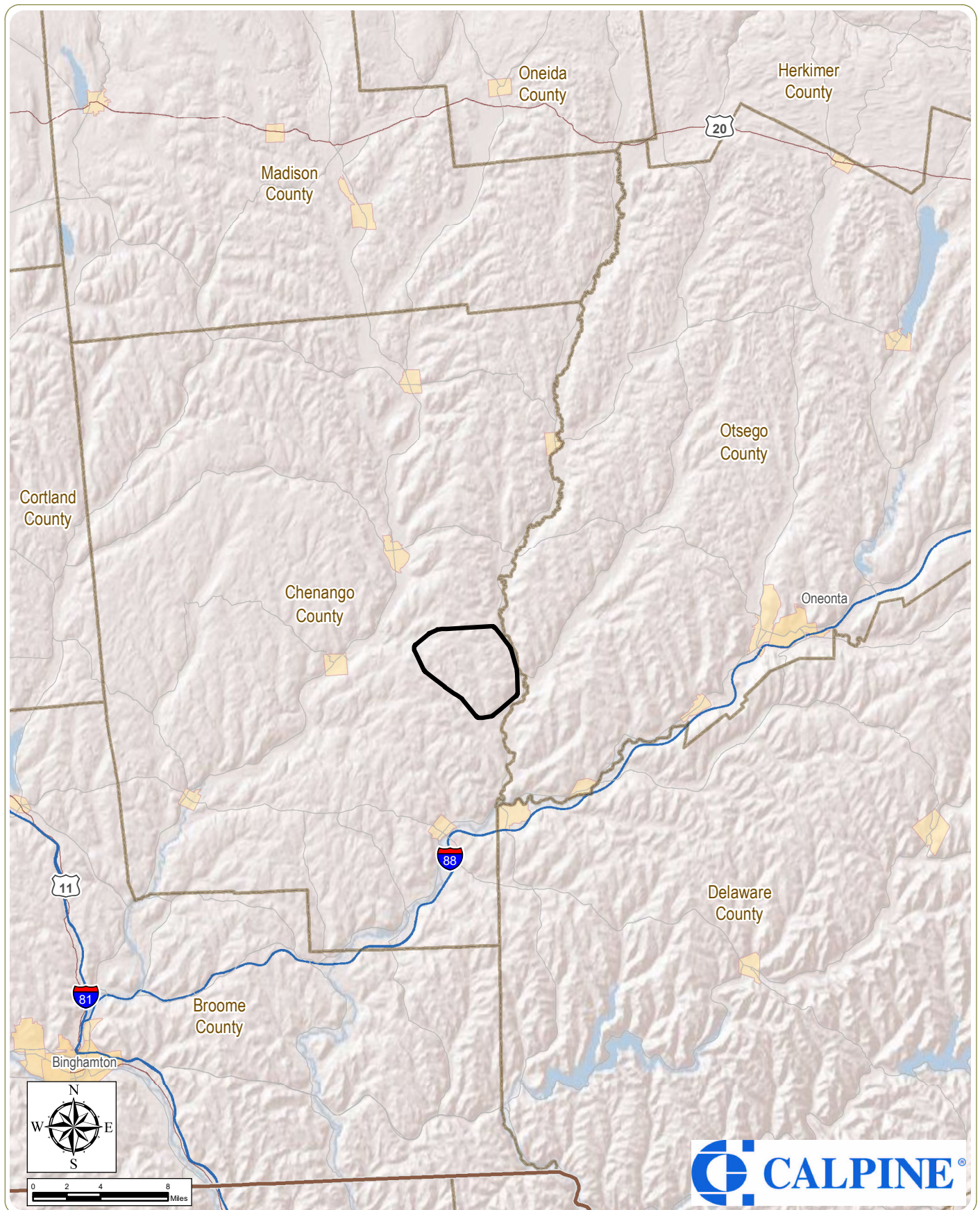
EIA (Energy Information Administration). 2017. *Frequently Asked Questions: How Much Electricity Does an American Home Use?* Available at: <http://www.eia.gov/tools/faqs/#electricity> (Last updated November 7, 2017; Accessed February 17, 2018).

EIA (Energy Information Administration). 2018. *Capacity Factors for Utility Scale Generators Not Primarily Using Fossil Fuels, January 2013-January 2018*. Available at: <https://bit.ly/2GSslgE> (Last updated March 23, 2018; Accessed April 12, 2018).

NYSERDA (New York State Energy Research and Development Authority). 2005. *Major Economic Impacts of Utility-Scale Wind Projects in New York*. Available at: <https://on.ny.gov/2GWqtZN> (Accessed April 12, 2018).

NYSERDA (New York State Energy Research and Development Authority). 2017. *New York Wind Energy Guide for Local Decision Makers*. Available at: <http://on.ny.gov/2vQZ45I> (Accessed April 12, 2018).

FIGURES



High Bridge Wind Project

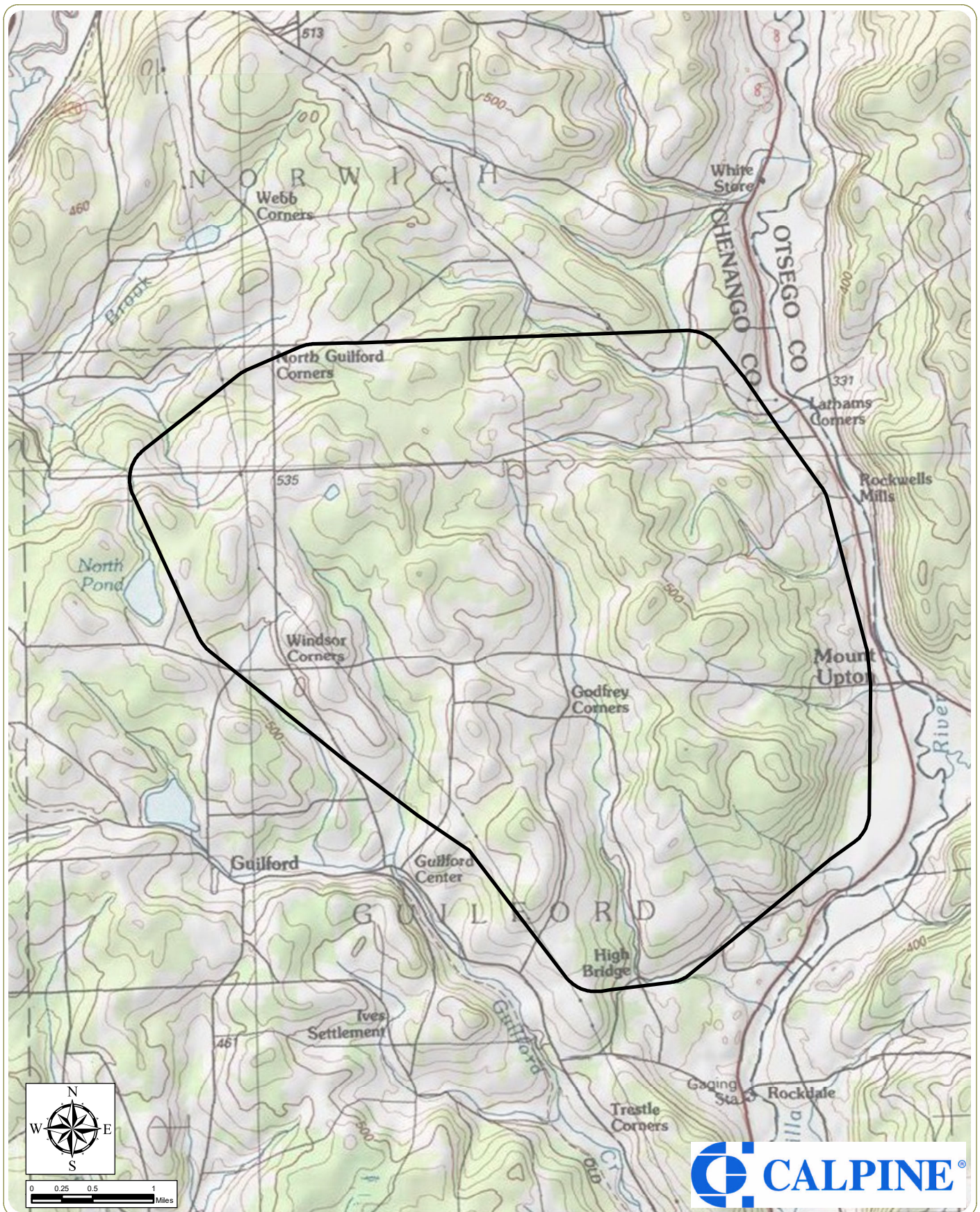
Town of Guilford, Chenango County, NY

Figure 1: Regional Project Location

 Facility Area



Notes: 1. Basemap: ESRI ArcGIS Online "World Shaded Relief" map service. 2. This map was generated in ArcMap on April 13, 2018. 3. This is a color graphic. Reproduction in grayscale may misrepresent the data.



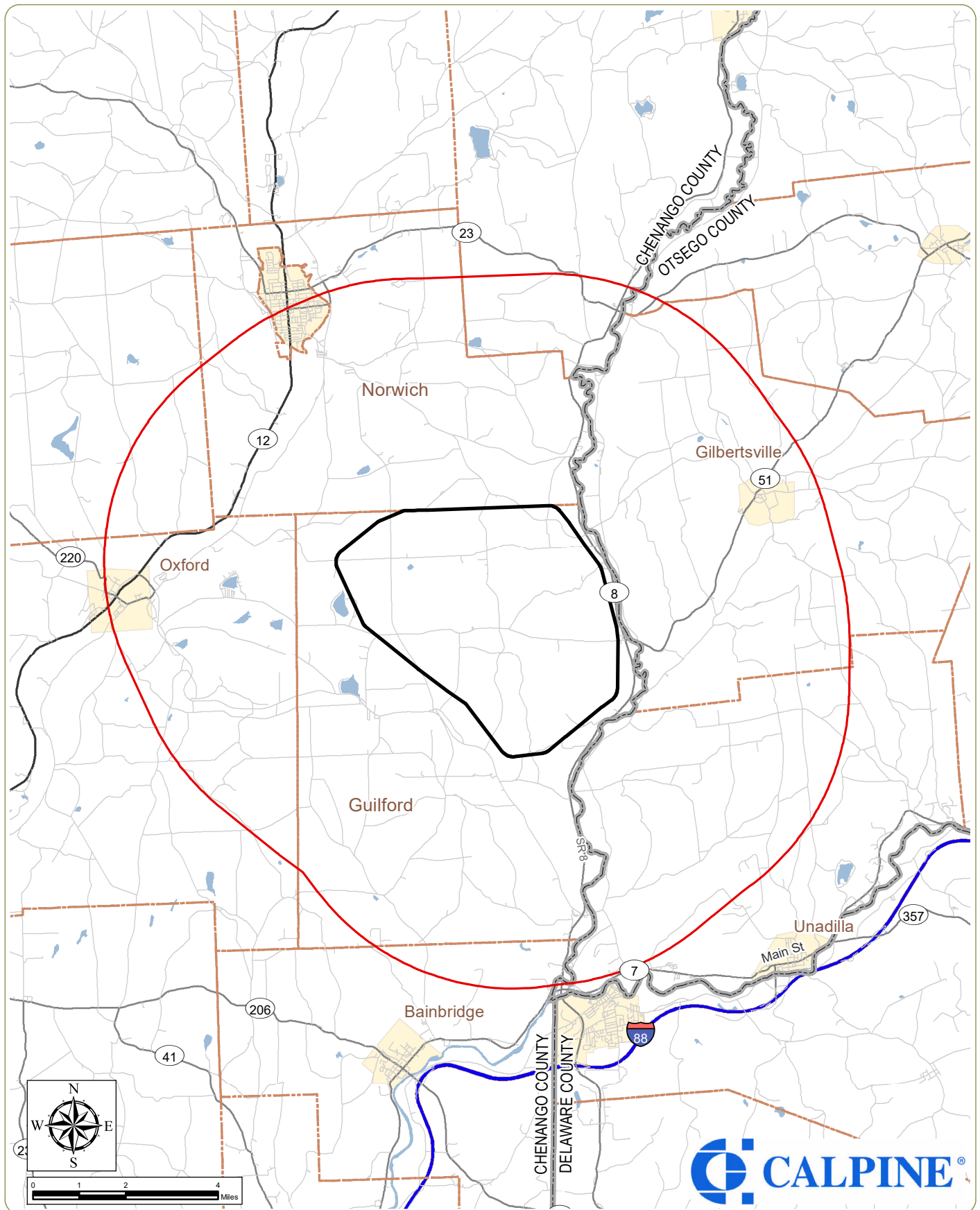
High Bridge Wind Project

Town of Guilford, Chenango County, NY

Figure 2: Facility Area

 Facility Area

Notes: 1. Basemap: ESRI ArcGIS Online "USA Topo Maps" map service. 2. This map was generated in ArcMap on April 13, 2018. 3. This is a color graphic. Reproduction in grayscale may misrepresent the data.



High Bridge Wind Project

Town of Guilford, Chenango County, NY

Figure 3: Study Area

- Town Boundary
- County Boundary
- Facility Area
- 5-Mile Study Area

Notes: 1. Basemap: ESRI StreetMap 2012. 2. This map was generated in ArcMap on April 13, 2018. 3. This is a color graphic. Reproduction in grayscale may misrepresent the data.



www.edrdpc.com

EXHIBIT A. Notification List

AFFECTED STATE AND FEDERAL AGENCIES

New York State Attorney General

Eric Schneiderman, NYS Attorney General
State Capitol Building
Albany, NY 12224
Email not available.

New York State Department of Agriculture and Markets

Richard Ball, Commissioner
10B Airline Drive
Albany, NY 12235
info@agriculture.ny.gov

New York State Department of Environmental Conservation

Basil Seggos, Commissioner
625 Broadway
Albany, NY 12233
basil.seggos@dec.ny.gov

New York State Department of Environmental Conservation Region 7

Matt Marko, Regional Director
615 Erie Blvd. West
Syracuse, NY 13204-2400
r7dep@gw.dec.state.ny.us

New York State Energy Research and Development Authority (NYSERDA)

Kelly Tyler, Director of Communities and Local Government
17 Columbia Circle
Albany, NY 12203-6399
kelly.tyler@nyserda.ny.gov

New York State Governor's Office

Andrew Cuomo, Governor of NY
NY State Capitol Building
Albany, NY 12224
Email not available

New York State Department of Health

Howard A. Zucker, Commissioner
Corning Tower
Empire State Plaza
Albany, NY 12237
dohweb@health.ny.gov

New York State Division of Homeland Security and Emergency Services

Roger Parrino, Commissioner
1220 Washington Ave
Albany, NY 12226
Email not available

New York State Office of Parks, Recreation and Historic Preservation

Rose Harvey, Commissioner
NYS Office of Parks, Recreation and Historic Preservation
625 Broadway
Albany, NY 12207
Email not available

New York State Department of Public Service

Kathleen Burgess, Secretary to the Commission
Empire State Plaza
Agency Building 3
Albany, NY 12223
secretary@dps.ny.gov

New York State Department of Public Service

Andrew Davis, Utility Supervisor
Empire State Plaza
Agency Building 3
Albany, NY 12223
andrew.davis@dps.ny.gov

New York State Department of State

Rossana Rosado, Secretary of State
One Commerce Place
99 Washington Avenue
Albany, NY 12231-0001
info@dos.ny.gov

New York State Department of Transportation

Robert Sack, Director
50 Wolf Road
Albany, NY 12232
robert.sack@dot.ny.gov

New York State Department of Transportation

Jack Williams, P.E., Regional Director
44 Hawley Street
Binghamton, NY 13901
jack.williams@dot.ny.gov

New York Independent System Operator

Michael Bemis, Board Chair
10 Krey Boulevard
Rensselaer, NY 12144
stakeholder_services@nyiso.com

Empire State Development Corporation

Donna Howell, Southern Tier Regional Director
44 Hawley St., Room 1508
Binghamton, NY 13901
km@theagency-ny.com

New York State Senate

Frederick J. Akshar II, NYS Senator, 52nd District
1607 State Office Building
44 Hawley Street
Binghamton, NY 13901
akshar@nysenate.gov

New York State Senate

James Seward, NYS Senator, 51st District
41 South Main Street
Oneonta, NY 13820
seward@nysenate.gov

New York State Assembly

Clifford W. Crouch, Assembly Member, District 122
1 Kattelville Road, Suite 1
Binghamton, NY 13901
CrouchC@nyassembly.gov

US Senate

Charles E. Schumer, US Senator
15 Henry Street, Room 100AF
Binghamton, NY 13901
Email not available

US Senate

Kirsten E. Gillibrand, US Senator
100 South Clinton Street
P.O. Box 7378
Syracuse, NY 13261-7378
invite@gillibrand.senate.gov

US Congress

Claudia Tenney, Representative, District 22
4747 Middle Settlement Road
P.O. Box 627
New Hartford, NY 13413
tenneyc@nyassembly.gov

US Congress

John Faso, Representative, District 19
PO Box 448
Kinderhook, NY 12106
john@johnfaso.com

US Army Corps of Engineers

Steve Metivier, Chief, NY Application Evaluation Section
1776 Niagara Street
Buffalo, NY 14207
steven.v.metivier@usace.army.mil

US Fish and Wildlife Service: New York Ecological Services Field Office

3817 Luker Road
Cortland, NY 13045
Email not available

US Federal Aviation Administration

Steve Urlass, Eastern Region Director
1 Aviation Plaza
Jamaica, NY 11434
Email not available

US Department of Defense Siting Clearinghouse

Steven J. Sample, Mission Evaluation Branch
3400 Defense Pentagon
Room 5C646
Washington, DC 10301
steven.j.sample4.civ@mail.mil

National Telecommunications and Information Administration

David J. Redl, Assistant Secretary for Communications and Information
Herbert C. Hoover Building (HCHB)
U.S. Department of Commerce
1401 Constitution Avenue NW
Washington DC 20230
Email not available

LOCAL AGENCIES

Chenango County Bureau of Fire and Emergency Management

Matthew Beckwith, Fire Coordinator Car 1
279 County Rd 46
Norwich, NY 13815
Mbeck301@roadrunner.com

Chenango County Soil & Water Conservation District

Lance Lockwood, District Manager
99 North Borad Street
Norwich, NY 13815

County of Chenango Industrial Development Agency

Steve Craig, President and CEO
15 South Broad Street
Norwich, NY 13851

Chenango County Planning and Development

Donna M. Jones, Director of Planning
5 Court Street
Norwich, NY 13815

Chenango County Parks and Recreation

5 Court Street
Norwich, NY 13815

Chenango County Department of Public Works

Sean Fry, Director
79 Rexford Street
Norwich, NY 13815

Chenango County Department of Public Works

Doug Parry, Deputy Director of Highway Department
79 Rexford Street
Norwich, NY 13815

Chenango County Public & Environmental Health

Isaiah Sutton, Director of Environmental Health,
5 Court Street
Norwich, NY 13815
Isaiahs@co.chenango.ny.us

Cornell Cooperative Extension Chenango

99 North Broad Street
Norwich, New York 13815-1386
607-336-6961
Executive Director: Kenneth Smith

Otsego County Farm Bureau

Paul Greer, President
PO Box 76
Roseboom, NY 13450
Email not available

Chenango County Farm Bureau

Bradd Vickers, President
6083 State Hwy 12 N
Norwich, NY 13815
ccfb@ccfbny.org

Guilford Highway Department

Robert Fleming, Superintendent
223 Marble Road
Guilford, NY 13780

Guilford Fire Department

Ken Haynes, Fire Chief
289 County Road 37
Guilford, NY 13780

Norwich Fire Department

Tracy Chawgo, Fire Chief
31 East Main Street
Norwich, NY 13815
Email not available

Norwich Department of Public Works

George Carnrike Jr., Assistant Superintendent
Hale Street
Norwich, NY 13815
Email not available

Norwich Planning and Community Development

One City Plaza
Norwich, NY 13815
adonnison@norwichnewyork.net

MUNICIPALITIES AND SCHOOL DISTRICTS IN FACILITY AREA

Chenango County

Mary Weidman, County Clerk
5 Court Street
Norwich, NY 13815
countyclerk@co.chenango.ny.us

Chenango County

Lawrence Wilcox, Chairman of the Board of Supervisors
RC Woodford, Clerk of the Board
5 Court Street
Norwich, NY 13815
Email not available

Bainbridge-Guilford School District

Timothy Ryan, Superintendent of School
18 Juliand Street
Bainbridge, NY 13733
tryan@bgcsd.org

Norwich School District

Gerard O'Sullivan, Superintendent
89 Midland Drive
Norwich, NY 13815
gosullivan@norwichcsd.org

Town of Guilford

George Seneck, Town Supervisor
223 Marble Road
Guilford, NY 13780
Guilfordsupervisor@frontier.com

Gilbertsville-Mount Upton Central School District

Annette Hammond, Superintendent/CSE
693 State Highway 51
Gilbertsville, NY 13776
ahammond@gmucsd.org

MUNICIPALITIES AND SCHOOL DISTRICTS IN STUDY AREA

Otsego County

Kathy Sinnott Gardner, County Clerk
197 Main Street
Cooperstown, NY 13326
GardnerK@otsegocounty.com

Otsego County

David Bliss, Board of Representatives Chair
197 Main Street
Cooperstown, NY 13326
Blissd@otsegocounty.com

Town of Butternuts

Town Supervisor, Bruce Giuda
1234 State Highway 51
Gilbertsville, NY 13776
supervisor@townofbutternuts.com

Town of Norwich

Town Supervisor, Dave Evans
607-337-2302
townofnorwich@roadrunner.com

Town of Unadilla

Town Supervisor, George DeNys
P.O. Box 455
Unadilla, NY 13849
Townofunadilla@stny.rr.com

Town of Bainbridge

Town Supervisor, Dolores Nabinger
15 N Main Street
Bainbridge NY 13733
Dnabinger@yahoo.com

Town of Morris

Supervisor, Lynn Joy
P.O. Box 117
Morris, NY 13808
Townofmorrissupervisor@fronteir.com

Town of Oxford

Lawrence Wilcox, Supervisor
P.O. Box 271
Oxford, NY 13830
Email not available

Town of Preston

Peter C. Flanagan, Town Supervisor
299 Preston Center Road
Oxford, NY 13830
Flans1@frontier.com

Town of New Berlin

Robert T. Starr, Town Supervisor
P.O. Box 204
New Berlin, NY 13411
Email not available

Village of Oxford

Terry M. Stark, Mayor
20 LaFayette Park
P.O. Box 866
Oxford, NY 13830-0866
tstark@stny.rr.com

Village of Gilbertsville

Ken Nolan, Mayor
PO Box 146
Gilbertsville, NY 13776
Email not available

Village of Norwich

Christine A. Carnrike, Mayor
One City Plaza, Norwich, NY 13815
(607) 334-1201

Oxford Academy & Central School District

Shawn Bissetta, Superintendent
12 Fort Hill Park
Oxford, NY 13830
sbissetta@oxac.org

Sidney Central School District

William Christensen, Superintendent
95 West Main Street
Sidney, NY 13838
wchristensen@sidneycsd.org

Unadilla Valley Central School District

Robert J. Mackey, Superintendent
PO Box F
4238 State Highway 8
New Berlin, NY 13411
Mackey@uvstom.org

Unatego Central School District

David Richards, Superintendent of Schools
2641 State Highway 7 P.O. Box 483
Otego, NY 13825
drichards@unatego.stier.org

ADDITIONAL STAKEHOLDERS**Enterprise Products Partners L.P.**

1100 Louisiana Street
Houston, TX 77002
(713) 381-6500

Lt. Warren E. Eaton Airport

6390 State Highway 12
Norwich NY 13815
(607) 334-9430

New York State Electric and Gas

Carl A. Taylor, President and Chief Executive Officer
P.O. Box 5224
Binghamton, NY 13902-5224
Email not available

Oneida Indian Nation

Raymond Halbritter, Nation Representative for
Government-to-Government Consultation
5218 Patrick Road
Verona, NY 13478
info@oneida-nation.org

Oneida Indian Nation

Stephen J. Selden, Esq., Member of General Council,
Designated Representative for Environmental/NEPA
and legal issues
5218 Patrick Road
Verona, NY 13478
Email not available

Oneida Nation of Wisconsin

Ed Delgado, Chairman, Designated representative
for Government-to-Government Consultation
P. O. Box 365
Oneida, WI 54155-0365
Email not available

Oneida Nation of Wisconsin

Corina Williams, THPO, Designated representatives for
Environmental/NEPA, Section 106 and projects
P. O. Box 365
Oneida, WI 54155-0365
cwilliam@oneidanation.org

Sidney Municipal Airport

199 River St
Sidney NY 13838
(607) 561-2346

Tuscarora Indian Nation

Leo Henry, Chief, Government-to-Government
Consultation Section 106, and projects
2006 Mt. Hope Road
Via Lewiston, NY 14092

Tuscarora Environmental Program (Tuscarora Nation)

Neil Patterson, Jr., Director, designated representative
for Environment/NEPA
2045 Upper Mountain Road
Sanborn, NY 14132
npatterson@hetf.org

PUBLIC INTEREST GROUPS**The Nature Conservancy - Eastern NY**

Rick Werwaiss, Executive Director
195 New Karner Road, Suite 201
Albany, NY 12205
eny@tnc.org

Upper Susquehanna Conservation Alliance

David Stilwell, Chairman
3817 Luker Road
Cortland, NY 13045
FW5ES_NYFO@fws.gov

Southern Tier East Regional Planning Development Board

Jennifer Gregory, Director
49 Court Street
Suite 222
Binghamton, NY 13901-3274
Email not available

New York Agricultural Land Trust

Nancy Hourigan, Board Chair
PO Box 216
Elbridge, NY 13060
nhourigan878@gmail.com

Sierra Club-Susquehanna Group

Scott Lauffer, Chair
17 Nanticoke Ave
Endicott, NY 13760

Delaware Otsego Audubon Society

Becky Gretton, Program Director
PO Box 544
Oneonta, NY 13820
info@doas.us

New York Public Interest Research Group (NYPIRG) - Binghamton Chapter

State University College University Union
Box 2000
Binghamton, NY 13902
binghamton@nypirg.org

Susquehanna River Basin Commission

Andrew D. Dehoff, Executive Director
4423 N. Front Street
Harrisburg, PA 17110-1788
srbc@srbc.net

The Wetlands Trust

Jim Curatolo, Director
4729 State Route 414
Burdett, NY 14818
jc@thewetlandtrust.org

EXHIBIT B. Goals and Objectives for Stakeholder Involvement

Affected Agency and Municipality Consultations

Stakeholder	Consultation Goals	Implementation Plan and Schedule
Host Municipalities <ul style="list-style-type: none"> • Chenango County • Town of Guilford 	<ul style="list-style-type: none"> - Community outreach - Solicit local feedback - Disseminate Information regarding the proposed Facility, Article 10, the Intervenor Funding process, the PSS/scoping process, the Application, etc. - Collect all information necessary to complete the Article 10 process - Identify community concerns, local landmarks, land uses, and resources - Adjust study scope/methodology based on stakeholder input and concerns - Provide contact information for Facility and opportunities for direct engagement with public - Review local laws to determine anticipated compliance or need for waivers - Consult to inform the Applicant's estimate of incremental municipal, public authority, or utility operating and infrastructure costs that will be incurred for police, fire, emergency, water, sewer, solid waste disposal, highway maintenance and other municipal, public authority, or utility services during the construction and operation phases of the facility - Develop avoidance, minimization and mitigation plans to address potential Facility impacts 	<ul style="list-style-type: none"> - Attend public information sessions⁹ and local meetings, develop informational mailings, and launch and update the Facility website - Potentially staff a local office and develop a local contact phone number - Develop a dedicated Facility email address to respond to inquiries and accept public comment - Initiate direct contact with local officials and boards regarding PSS submission, Application filing, etc., at least two weeks prior to filing - Consult with appropriate officials/departments regarding specific topics, such as road use, visual impact assessment, land use and comprehensive plans, and exchange other information sought by the Applicant or by host municipalities - Provide timely public/stakeholder notices and information on public comment periods, scheduled information sessions, and opportunities for participation - Obtain all relevant local laws, building codes, comprehensive plans, zoning maps, etc. - Discuss potential avoidance, minimization, and mitigation measures to address identified impacts - Initiate direct contact through telephone calls, mailings, information sessions, and discussions, as appropriate

⁹ Currently planned for Summer/Fall of 2018

Stakeholder	Consultation Goals	Implementation Plan and Schedule
<p>Host School Districts</p> <ul style="list-style-type: none"> • Bainbridge-Guilford School District • Norwich Central School District • Gilbertsville-Mount Upton Central School District 	<ul style="list-style-type: none"> - Solicit local feedback - Disseminate information regarding the proposed Facility - Discuss impacts to school bus routes, district operating budget, and school operations, if any - Adjust study scope/methodology based on stakeholder input and concerns - Provide contact information for Facility and opportunities for direct engagement with public - Develop avoidance, minimization and mitigation plans to address potential Facility impacts - Consult to inform the Applicant's estimate of incremental school district operating and infrastructure costs due to the construction and operation of the facility 	<ul style="list-style-type: none"> - Provide timely stakeholder notices and information - Initiate direct contact with local officials and boards regarding PSS submission, Application filing, etc., at least two weeks prior to filing - Work with school officials to develop transportation plans to minimize or avoid delays/traffic problems associated with construction of the Facility - Schedule information sessions - Gather local feedback - Discuss potential avoidance, minimization, and mitigation measures to address identified impacts - Initiate direct contact through telephone calls, mailings, information sessions, and discussions, as appropriate
<p>Host Community Highway Departments</p> <ul style="list-style-type: none"> • New York State Department of Transportation • Chenango County Highway Division • Town of Guilford Highway Superintendent • Town of Norwich Highway Superintendent 	<ul style="list-style-type: none"> - Solicit local feedback - Disseminate information regarding the proposed Facility - Gather information on transportation routes and the condition and capacity of local roads - Discuss impacts to transportation and local infrastructure during and after construction; transportation routes, improvements and use of rights-of-way; and contingency plans in the event of an emergency - Develop avoidance, minimization and mitigation plans to address potential Facility impacts 	<ul style="list-style-type: none"> - Obtain and review Highway Department requirements for temporary radius improvements, transportation routes, and use of rights-of-way - Initiate direct contact with local officials and boards regarding PSS submission, Application filing, etc., at least two weeks prior to filing - Meet with highway officials to discuss concerns, potential impacts, avoidance/minimization strategies and potential mitigation - Work with local officials to develop transportation plans to minimize or avoid delays/traffic problems associated with construction of the Facility - Provide timely stakeholder notices and information - Initiate direct contact through telephone calls, mailings, information sessions, and discussions, as appropriate

Stakeholder	Consultation Goals	Implementation Plan and Schedule
<p>Adjacent Municipalities</p> <ul style="list-style-type: none"> • Chenango County • City of Norwich • Town of Bainbridge • Town of Butternuts • Town of Morris • Town of New Berlin • Town of Oxford • Town of Preston • Town of Unadilla • Village of Gilbertsville • Village of Oxford 	<ul style="list-style-type: none"> - Community outreach - Solicit local feedback - Disseminate information regarding the proposed Facility; Article 10; the Intervenor Funding process; the PSS/scoping process; the Application; etc. - Collect all information necessary to complete the Article 10 process - Identify community concerns, local landmarks, land uses, and resources - Adjust study scope/methodology based on stakeholder input and concerns - Provide contact information for the Facility and opportunities for direct engagement with the public - Review local laws to determine anticipated compliance or need for waivers - Consult to inform the Applicant's estimate of incremental municipal, public authority, or utility operating and infrastructure costs that will be incurred for police, fire, emergency, water, sewer, solid waste disposal, highway maintenance and other municipal, public authority, or utility construction and operation phases of the facility - Develop avoidance, minimization and mitigation plans to address potential Facility impacts 	<ul style="list-style-type: none"> - Attend public information sessions and local meetings, develop informational mailings, and launch and update the Facility website - Potentially staff a local office and develop a local contact phone number - Develop a dedicated Facility email address to respond to inquiries and accept public comment - Initiate direct contact with local officials and boards regarding PSS submission, Application filing, etc., at least two weeks prior to filing - Consult with appropriate officials/departments regarding specific topics, such as road use, visual impact assessment, land use and comprehensive plans, and exchange other information sought by the Applicant or adjacent municipalities - Provide timely public/stakeholder notices and information on public comment periods, scheduled information sessions, and opportunities for participation - Obtain all relevant local laws, building codes, comprehensive plans, zoning maps, etc. - Discuss potential avoidance, minimization, and mitigation measures to address identified impacts - Initiate direct contact through telephone calls, mailings, information sessions, and discussions, as appropriate
<p>Adjacent School Districts</p> <ul style="list-style-type: none"> • Oxford & Academy Central School District • Sidney Central School District • Unadilla Valley Central School District • Unatego Central School District 	<ul style="list-style-type: none"> - Solicit local feedback - Disseminate information regarding the proposed Facility - Develop avoidance, minimization and mitigation plans to address potential Facility impacts 	<ul style="list-style-type: none"> - Provide timely stakeholder notices and information - Initiate direct contact with local officials and boards regarding PSS submission, Application filing, etc., at least two weeks prior to filing - Consult with the school districts to ascertain local concerns - Work with school officials to develop transportation plans to minimize or avoid delays/traffic problems associated with construction of the Facility - Schedule information sessions - Gather local feedback - Initiate direct contact through telephone calls, mailings, information sessions, and discussions, as appropriate

Stakeholder	Consultation Goals	Implementation Plan and Schedule
<p>Emergency Response Organization</p> <ul style="list-style-type: none"> • Chenango County Bureau of Fire and Emergency Management • Guilford Fire Department • Norwich Fire Department • NYS Division of Homeland Security and Emergency Services • US Department of Defense 	<ul style="list-style-type: none"> - Inform emergency responders about the proposal, construction and operation processes, potential impacts on transportation routes, and contingency plans - Solicit local feedback - Disseminate information regarding the proposed Facility - Develop avoidance, minimization and mitigation plans to address potential Facility impacts 	<ul style="list-style-type: none"> - Provide timely stakeholder notices and information - Initiate direct contact with local officials and boards regarding PSS submission, Application filing, etc., at least two weeks prior to filing - Consult with departments to ascertain local concerns - Work with emergency responders to develop transportation plans and contingency plans to minimize or avoid delays/traffic problems associated with construction of the Facility - Schedule information sessions - Gather local feedback - Initiate direct contact through telephone calls, mailings, information sessions, and discussions, as appropriate
<p>Aviation and Defense</p> <ul style="list-style-type: none"> • Lt. Warren Eaton Airport • Sidney Municipal Airport • US Federal Aviation Administration 	<ul style="list-style-type: none"> - Ascertain potential Facility impacts on radar, defense systems, flight paths, and facility operations - Adjust study scope/methodology based on stakeholder input and concerns - Solicit stakeholder feedback - Disseminate information regarding the proposed Facility - Develop avoidance, minimization and mitigation plans to address potential Facility impacts 	<ul style="list-style-type: none"> - Request an informal Department of Defense review of the proposed construction or alteration, in accordance with 32 CFR, Section 211.7; or a formal Department of Defense review of the proposed construction or alteration in accordance with 32 CFR, Section 211.6 FAA - Consult, as required by law, on potential impacts to airport operations and radar, as well as potential emergency lighting requirements - Consult with stakeholders to identify any potential impacts to radar, flight paths, national defense, or other concerns - Discuss potential avoidance, minimization, and mitigation measures to address identified impacts - Identify the necessity of consultations with the operators of airports or heliports - Include outreach to inform such operators of the proposed facility and its location prior to the submission of the Preliminary Scoping Statement - Consult with operators of airports and heliports that are nonmilitary facilities, providing a detailed map and description of such construction or alteration to such operators, and a request for review of and comment on such construction or alteration by such operators

Stakeholder	Consultation Goals	Implementation Plan and Schedule
<p>Utilities/Communication</p> <ul style="list-style-type: none"> Enterprise Products Partners L.P. National Telecommunications and Information Administration New York State Electric and Gas 	<ul style="list-style-type: none"> Ascertain potential impacts of the Facility on communications infrastructure, energy transmission and interconnection, and the electric grid Solicit stakeholder feedback Disseminate information regarding the proposed Facility Develop avoidance, minimization and mitigation plans to address potential Facility impacts 	<ul style="list-style-type: none"> Consult with stakeholders to identify any potential impacts to utility infrastructure, communications, grid reliability/security, etc. Discuss potential avoidance, minimization, and mitigation measures to address identified impacts Provide timely stakeholder notices and information Initiate direct contact through telephone calls, mailings, information sessions, and discussions, as appropriate
<p>Environmental Agencies and Public Interest Groups</p> <ul style="list-style-type: none"> Audubon Society - Delaware Otsego Chapter New York State Department of Environmental Conservation (NYSDEC) NY Public Interest Research Group (NYPIRG) - Binghamton Chapter Sierra Club Susquehanna Group Susquehanna River Basin Commission The Nature Conservancy – Eastern NY The Wetlands Trust Upper Susquehanna Conservation Alliance US Fish and Wildlife Service 	<ul style="list-style-type: none"> Ascertain potential Facility impacts on environmental resources, including avian and bat species, plants, wetlands, protected species and habitat, land use, public health and safety, emissions, noise, geology/soils, water resources, agricultural lands, and other matters of concern to stakeholders Collect all information necessary to complete the Article 10 process Identify agency concerns, state parks and scenic resources, wildlife management areas, conservation easements, protected lands, and other resources Adjust study scope/methodology based on stakeholder input and concerns Consult with agencies regarding regulatory compliance, permit requirements, etc. Solicit stakeholder feedback Disseminate information regarding the proposed Facility Develop avoidance, minimization and mitigation plans to address potential Facility impacts 	<ul style="list-style-type: none"> Review bird/bat studies with DEC and FWS to determine adequacy of scope and methodology, and compliance of proposed plan with established regulations, guidance, and study Protocols Confer with DEC and Army Corps regarding wetlands delineations, stream crossings, and other relevant issues Confer with DEC and FWS regarding potential concerns associated with endangered species, the need for incidental take permits, and the Migratory Bird Treaty Act Confer with DEC regarding Water Quality Certification requirements and process Consult to develop an acceptable input dataset, including modeling for the Applicant's proposed Facility and inputs for the emissions analysis Consult with state agencies and authorities to determine whether the Applicant has correctly identified all requirements, permits, etc., mandated by these agencies. Provide timely stakeholder notices and information Initiate direct contact through telephone calls, mailings, information sessions, and discussions, as appropriate

Stakeholder	Consultation Goals	Implementation Plan and Schedule
<p>Agricultural Agencies and Stakeholders</p> <ul style="list-style-type: none"> • Chenango County Cornell Cooperative Extension • Chenango County Farm Bureau • Chenango County Soil and Water Conservation District • New York Agricultural Land Trust • New York State Department of Agriculture and Markets • Otsego County Farm Bureau 	<ul style="list-style-type: none"> - Ascertain potential impacts of the Facility on historical and cultural resources - Ascertain potential socioeconomic effects of Facility Consultation with agencies regarding regulatory compliance and agency guidance - Identify resources and landmarks of local concern - Develop avoidance, minimization and mitigation plans to address potential Facility impacts - Adjust study scope/methodology based on stakeholder input and concerns 	<ul style="list-style-type: none"> - Solicit feedback from stakeholders on any potential agricultural concerns unique to the Study Area - Confer with Ag & Markets regarding compliance with agency guidance and policies - Request information or guidance from stakeholders on potential agricultural impacts, as well as potential avoidance, minimization, and mitigation measures to address those impacts - Consult with state agencies and authorities to determine whether the Applicant has correctly identified all requirements, permits, etc., mandated by these agencies. - Provide timely stakeholder notices and information - Initiate direct contact through telephone calls, mailings, information sessions, and discussions, as appropriate

Stakeholder	Consultation Goals	Implementation Plan and Schedule
<p>Historical/Cultural/ Socioeconomic Groups</p> <ul style="list-style-type: none"> • Chenango County Planning and Development • County of Chenango Industrial Development Agency • DEC (Environmental Justice Issues) • Empire State Development Corporation • NYS Office of Parks, Recreation and Historic Preservation • Southern Tier East Regional Planning Development Board 	<ul style="list-style-type: none"> - Ascertain potential impacts of the Facility on energy transmission and interconnection, and the electric grid - Discuss the Facility's compliance with state energy planning objectives - Solicitation of stakeholder feedback - Information dissemination on proposed Facility - Develop avoidance, minimization and mitigation plans to address potential Facility impacts - Achieve compliance with Article 10 regulatory requirements, an adequate PIP and PSS, a complete Application, etc. - Adjustment of study scope/methodology based on stakeholder input and concerns 	<ul style="list-style-type: none"> - Consult in accordance with Section 14.09 of the New York State Parks, Recreation, and Historic Preservation Law and/or Section 106 of the Historic Preservation Act, - Consult with OPRHP and DPS regarding cultural resources studies and to determine the need for and scope of work for any required Phase II cultural resources study - Consult to establish representative viewpoints for the photographic simulations of the facility and interconnections - Gather information on resources and landmarks of local concern for cultural impact assessment - Develop information on potential socioeconomic effects of Facility, including job creation, tax revenues, and incidental effects on local business and industry - Schedule information sessions - Gather local feedback - Consult with agencies and authorities to determine whether the Applicant has correctly identified all requirements, permits, etc., mandated by these agencies. - Discuss potential avoidance, minimization, and mitigation measures to address identified impacts - Initiate direct contact through telephone calls, mailings, information sessions, and discussions, as appropriate

Stakeholder	Consultation Goals	Implementation Plan and Schedule
<p>Energy Agencies and Groups</p> <ul style="list-style-type: none"> • New York State Energy Research and Development Authority (NYSERDA) • NY Independent System Operator • NYS Department of Public Service (DPS) 	<ul style="list-style-type: none"> - Ascertain potential impacts of the Facility on energy transmission and interconnection, and the electric grid - Discuss the Facility's compliance with state energy planning objectives - Solicit stakeholder feedback - Disseminate information on proposed Facility - Develop avoidance, minimization and mitigation plans to address potential Facility impacts - Achieve compliance with Article 10 regulatory requirements, develop an adequate PIP and PSS, a complete Application, etc. - Adjust study scope/methodology based on stakeholder input and concerns 	<ul style="list-style-type: none"> - Consult to develop an acceptable input data set, including modeling for the Applicant's proposed facility and inputs for required emissions and electric system effects analysis - Work with NYISO to coordinate System Reliability Impact Study (SRIS) - Confer with stakeholders to ascertain the ways in which the Facility will advance state energy planning objectives and be consistent with the State Energy Plan and state policy - Consult with the state agencies and authorities whose requirements are the subject of the State Laws and Regulations exhibit to determine whether the Applicant has correctly identified all such requirements - Consult to identify applicable requirements to be used to demonstrate the degree of compliance with all relevant applicable reliability criteria of the Northeast Power Coordinating Council Inc., New York State Reliability Council, and the local Interconnecting transmission utility, including any criteria regarding blackstart and fuel switching capabilities - Provide timely stakeholder notices and information - Initiate direct contact through telephone calls, mailings, information sessions, and discussions, as appropriate
<p>Other Affected Federal and State Agencies</p> <ul style="list-style-type: none"> • NYS Attorney General • NYS Department of Health • NYS Department of State • US Army Corps of Engineers 	<ul style="list-style-type: none"> - Contact Stakeholders - Disseminate Information regarding the Facility, Article 10, and Intervenor Funding - Provide contact information - Identify any specific issues or concerns - Schedule follow up meeting(s) and consultation(s), as appropriate - Adjust study scope/methodology based on stakeholder concerns 	<ul style="list-style-type: none"> - Consult with agencies and authorities to determine whether the Applicant has correctly identified all requirements, permits, etc., mandated by these agencies. - Provide timely stakeholder notices and information - Ensure scope and methodology of public health and safety studies are adequate to address - Initiate direct contact through telephone calls, mailings, information sessions, and discussions, as appropriate.

Stakeholder	Consultation Goals	Implementation Plan and Schedule
<p>Elected Representatives</p> <ul style="list-style-type: none"> • Charles E. Schumer, US Senator • Claudia Tenney, US Representative, District 22 • Clifford W. Crouch, Assembly Member, District 122 • Frederick J. Akshar II, NYS Senator, 52nd District • James Seward, NYS Senator, 51st District • John Faso, US Representative, District 19 • Kirsten E. Gillibrand, US Senator • NYS Governor's Office 	<ul style="list-style-type: none"> - Contact representatives - Disseminate Information regarding the Facility and provide contact info - Identify any specific issues or concerns - Schedule follow up meeting(s) and consultation(s), as appropriate 	<ul style="list-style-type: none"> - Provide notifications in per 1000.5 Pre-Application Procedures. - Provide timely stakeholder notices and information - Initiate direct contact through telephone calls, mailings, information sessions, and discussions, as appropriate
<p>Other Stakeholders/Agencies</p> <ul style="list-style-type: none"> • Oneida Indian Nation • Tuscarora Indian Nation 	<ul style="list-style-type: none"> - Contact Stakeholders - Disseminate Information regarding the Facility, Article 10, and Intervenor Funding - Provide contact information - Identify any specific issues or concerns - Schedule follow up meeting(s) and consultation(s), as appropriate 	<ul style="list-style-type: none"> - Initiate early discussions with Native American tribes, and the SHPO, regarding cultural resources under Part 106 in advance of filing the PSS. - Provide timely stakeholder notices and information - Initiate direct contact through telephone calls, mailings, information sessions, and discussions, as appropriate

EXHIBIT C. Example PIP Tracking Log

High Bridge Wind Project PIP Tracking – Meeting Log

[illegible]