

AFFIDAVIT OF DISTRIBUTION

STATE OF NY )

COUNTY OF Chemung )

CITY OF Elmira )

I, Eric Randolph, being duly sworn on oath now and during all times herein stated, have been the publisher and designated agent of the publication known as,

Star-Gazette ("Publication")

and have full knowledge of the facts herein stated as follows:

The ~~insert~~ <sup>ROP ad</sup> for First Energy ("Ad/Advertiser") with Insertion Order No. 5964 was distributed to the Publication's full circulation on the 2<sup>nd</sup> day of May, 2013.

By: [Signature]

Subscribed and sworn to before me  
this 2<sup>nd</sup> day of May, 2002013

Notary Seal:

[Signature]  
Notary Public

SUZANNE J. WESTON  
Notary Public, State of New York  
No. 01WE4980512  
Residing in Broome County  
My Commission Expires 4-20-2015

**Your Pennsylvania and New York REALTOR®**

**Ron Gilbert**  
*President and Vice President*

Cell: 607.493.2244  
Office: 607.733.2700  
Fax: 607.733.9740  
Email: [RGilbert@RealtyUSA.com](mailto:RGilbert@RealtyUSA.com)

25 West Church Street, Ste 400, NY 10011

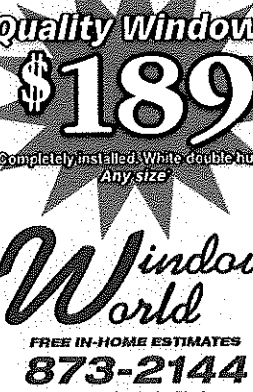


**STAR-GAZETTE**  
stargazette.com

**EZ-pay**

**The easy way  
to pay for your subscription!**

**Call 1-866-254-0173 for more information.**



**Quality Windows**

**\$189**

Completely installed. White double hung.  
Any size

**Window  
World**

**FREE IN-HOME ESTIMATES**

**873-2144**

2020 Lake Rd., Elmira

[www.windowworldofsouthernlimer.com](http://www.windowworldofsouthernlimer.com)

*\*Ask salesperson for details.*

© 1999 Window World of Southern Limer, Inc.

On February 19, 2013, Pennsylvania Electric Company's (Penelec) Waverly filed with the New York State Public Service Commission (PSC) a Petition to make changes to the Price to Compare Default Service (PTC) Rider and the Default Service Support (DSS) Rider for Penelec Waverly District default service customers to move Non-Market Based PJM costs (Regional Transmission Expansion Plan costs and Expansion cost recovery) changes from the PTC Rider to the DSS Rider beginning June 1, 2013. Penelec also made changes to the ESCO Manual. There is no expected impact of this change to customers.

The Company's tariff filing and ESCO Manual can be viewed at the PSC's website, [www.dps.ny.gov](http://www.dps.ny.gov), under Case 13-E-0067. The complete tariff, including these amendments, and the ESCO Manual, including this amendment, can also be viewed on both Penelec's and the PSC's websites. If you do not have access to the internet, you can view complete copies of Penelec's tariff amendments at the PSC's office at Empire State Plaza, Agency Building 3, Albany, NY 12223, or by visiting Penelec's offices that are open to the public.

**Newsday Crossword**

**ACROSS**  
 1 Thunder sound  
 5 Do dairy work  
 9 Tally  
 4 Fence piece  
 5 Dumbbell material  
 6 Plain writing  
 7 Eerie glow  
 8 It means "one-billionth"  
 9 Walked nervously  
 0 Demolition team  
 3 Weighted down  
 4 Hyundai rival  
 5 Off-the-wall  
 8 Old West lawman  
 2 Professor, at times

69 Extending  
way down

70 Short  
distance

**DOWN**

1 Slow traffic  
pace

2 First lady before  
Michelle

3 Made public

4 Allocated  
position

5 Prefix for  
series

6 Shiite state

7 Protracted

8 Find fault with

9 Show up

10 Attract

11 Seven Dwarfs  
leader

**THE WOW FACTOR** by Fred Pliscope  
 Edited by Stanley Newman  
[www.stanwords.com](http://www.stanwords.com)

12 Bring to bear	39 Toddler's
13 _____XING	glassful
21 Do a pizzeria	40 Tex- _____chili
_____chore	41 Oil source
22 Oil apparatus	45 <i>Bambi</i> skunk
25 Whiffs that waft	46 Cone
26 Floor models	_____producer
27 Actress	50 Cabled balls
_____Barymore	and strikes
29 Big fuss	52 Declares
30 Falling-out	_____openly
31 Wee, to Marie	53 Low-calorie
33 Ranch	64 Hair-raising
_____measure	55 Pipsqueak
34 Bubbly	56 Carne alive
_____beverages	57 Except for
35 Waiters' totes	58 Homonym of
36 Tefkisch	54 Down
_____Muppet	59 Puppy's cry
37 Fontana	60 Street sealer
_____di Trevi	61 One wearing a Y
_____locale	62 Invitation

"Ah, you're neither one thing nor yet quite the other. Fity, but there 'tis."

Today's deal comes from a head-to-head match, where both declarers faced the identical lead in their game contract of four spades. After West introduced a vulnerable two-level overall.

The unsuccessful declarer thought he saw the danger of this hand coming from the possibility that the defenders might get diamond ruffs — and he was right, but not in the way he had predicted. He imagined he was playing safely by ruffing with the diamond ace to protect against West's having a singleton. He discovered his mistake when East ruffed away the diamond ace and led a heart to his partner, gave the diamond king, and gave the ace a second time. Five losers or so.

The second declarer says that West is heavily favorite to hold the heart ace, so he was not worried about East's giving his partner two diamond ruffs. So he puffed in the diamond jack at the first trick. This turned out to be equally disastrous when East ruffed, crossed to the heart ace, and saw West play back the diamond king. Dummy played the ace and the jack, leaving East, leaving West with the diamond 10-8 and a sure diamond winner. Down one again!

Declarer could have virtually ensured his contract by playing low from dummy at trick one. All he is relying on is that West has the heart ace. If that is so, then no matter how the hearts are split, the defenders can take only three tricks.

NORTH 17-3 A  
 ♠ Q 10 9 3  
 ♥ K  
 ♦ A Q J 7 5  
 ♣ K 9 8

WEST	EAST
♠ 3	♠ 762
♥ A Q J 9 6 2	♥ 7 5 4 3
♦ K 10 8 2	♦ —
♣ Q 5	♣ J 10 7 4 3 2

**SOUTH**  
 ♠ A K J 8 4  
 ♥ 10 8  
 ♦ 9 6 4 3  
 ♣ A 8

**Vulnerable:** East-West  
**Dealer:** East

**The bidding:**

South	West	North	East
1♠	2♥	3♥	Pass
4♠	All pass		Pass

**Opening lead:** Diamond two

**BID WITH THE ACES** 45 23

South holds:

♠ Q 10 9 3  
♥ K  
♦ A Q J 7 6  
♣ K 9 8

South	West	North	East
1 ♠	Pass	1 ♥	Pass

**ANSWER:** With such soft cards — you have only one ace and two kings — you should pass two hearts and hope partner can make it. If your partner had a full invitation, he could have jumped to three hearts, so you should assume game is very unlikely.

For details of Buddy Wolk's autobiography, "The Loose Wolk," contact Ray (507) 6 and noon. If you would like to contact Buddy Wolk, send him at bobbywolk@earthlink.net.

Find yourself  
in our local **photo**  
**galleries**  
stargazette.com

ANSWER TO PREVIOUS PUZZLE

BOOM	PICT	SOFAR
ACRE	AREA	WHOLE
SHADOW	BOX	ANGLE
HOLIDAYS	PROMOS	
COTS	HUM	AWES
NOIR	PARSEC	
CAME	SARFARI	SHAM
ATOM	SILIP	PILE
ACKS	PILOTS	NEW
EMVIES	PRESS	
UYA	ONS	SIEW
PALATTE	SITREAKED	
SCALE	CLOUDTIME	
ENROR	PAIRS	DAGA

AFFIDAVIT OF DISTRIBUTION

STATE OF N.Y. )

COUNTY OF Chemung )

CITY OF Elmira )

I, Eric Randolph, being duly sworn on oath now and during all times herein stated, have been the publisher and designated agent of the publication known as,

Star-Gazette ("Publication")

and have full knowledge of the facts herein stated as follows:

The ~~insert~~ <sup>ROP ad</sup> for FirstEnergy ("Ad/Advertiser") with Insertion Order No. 5964 was distributed to the Publication's full circulation on the 7<sup>th</sup> day of May, 2013.

By: [Signature]

Subscribed and sworn to before me  
this 8<sup>th</sup> day of May, 2013

Notary Seal:

[Signature]  
Notary Public

SUZANNE J. WESTON  
Notary Public, State of New York  
No. 01WE4980512  
Residing In Broome County  
My Commission Expires 4-23-2015

# East about to be overrun by billions of cicadas

By Seth Benenstein  
Associated Press

WASHINGTON — Any day now, billions of cicadas with bulging red eyes will crawl out of the earth after 17 years underground and overrun the East Coast. The insects will arrive in such numbers that people from North Carolina to Connecticut will be outnumbered roughly 600-to-1. Maybe more.

Scientists even have a horror-movie name for the infestation: Brood II. But as ominous as that sounds, the insects are harmless.

They won't hurt you or other animals. At worst, they might damage a few saplings or young shrubs. Mostly they will blanket certain pockets of the region, though lots of people won't ever see them.

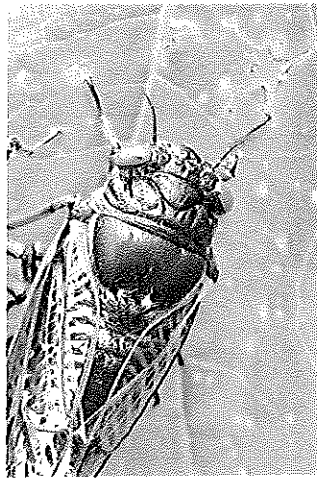
"It's not like these hordes of cicadas suck blood or zombie people," said May Berenbaum, a University of Illinois entomologist.

They're looking for just one thing: sex. And they've been waiting quite a long time.

Since 1995, this group of 1-inch bugs, in wingless nymph form, has been a few feet underground, sucking on tree roots and biding their time. They will emerge only when the ground temperature reaches precisely 64 degrees. After a few weeks up in the trees, they will die and their offspring will go underground, not to return until 2030.

"It's just an amazing accomplishment," Berenbaum said. "How can anyone not be impressed?"

And they will make a big racket, too. The noise all the male cicadas make when they sing for sex



can drown out your own thoughts, and maybe even rival a rock concert.

In 2004, Gene Kritsky, an entomologist at the College of Mount St. Joseph in Cincinnati, measured cicadas at 94 decibels, saying it was so loud "you don't hear planes flying overhead."

There are ordinary cicadas that come out every year around the world, but these are different. They're called magicicadas—as in magic—and are red-eyed. And these magicicadas are seen only in the eastern half of the United States, nowhere else in the world.

There are 15 U.S. broods that emerge every 13 or 17 years, so that nearly every year, some

place is overrun.

Last year it was a small area, mostly around the Blue Ridge Mountains of Virginia, West Virginia and Tennessee. Next year, two places get hit: Iowa into Illinois and Missouri; and Louisiana and Mississippi. And it's possible to live in these locations and actually never see them.

This year's invasion, Brood II, is one of the biggest ones. Several experts say that they really don't have a handle on how many cicadas are lurking underground but that 30 billion seems like a good estimate.

At the Smithsonian Institution, researcher Gary Hevel thinks it may be more like 1 trillion.

A cicada in Pipestem State Park in West Virginia in 2003. Any day now, cicadas with bulging red eyes will creep out of the ground after 17 years and overrun the East Coast with the awesome power of numbers. Big numbers. Billions. Maybe even a trillion. For a few buggy weeks, residents from North Carolina to Connecticut will be outnumbered by 600 to 1. Maybe more. And the invaders will be loud. A chorus of buzzing male cicadas can rival a jet engine. ASSOCIATED PRESS

ArnotHealth

## American Red Cross Blood Drive at Arnot Ogden Medical Center

Wednesday, May 8, 2013  
1 - 6 p.m.  
School of Nursing, Clute Building

Please call  
Health on Demand  
607-737-4499  
to make your appointment

**Tanino** *Mother's Day Brunch Buffet*  
Ristorante Italiano  
Sunday, May 12  
11am - 3pm

**Extensive Buffet Featuring:**  
Carving Station, Omelet Station, Pasta Station, Breakfast/Lunch/Dinner Entrees, Salad Bar, Sides, Platters, Kids Buffet and Dessert Bar. Also: Drink Specials! (Not Included with Buffet Price)

Adults: \$27.95 • 10 & Under: \$13.95 • 3 & Under: FREE  
Call Now For Reservations!

**Don't Forget to stop next door for Italian Treats!**  
*Cafe Tanino and Bakery*  
Italian Pastry Shop  
Assorted Baby Cakes for 2 - \$7.25  
Choose from: Strawberry Bliss, Neapolitan, Double Chocolate, White Chocolate & Many More!  
Chocolate Covered Strawberries 2 for - \$3.75  
"The Sweetest Spot in Horseheads!"  
11 Ithaca Rd., Horseheads, NY • 607-739-7673  
Mon-Wed: 8-6 • Thurs: 8-8 • Fri: 8-8 • Sat: 9-9 • Sun: CLOSED  
www.cafetanino.com

## Cuomo continues push of women's rights agenda

By Jessica Bakeman  
bakeman@post.com

ALBANY — Gov. Andrew Cuomo continued his push Monday for a legislative agenda fighting discrimination against women, which includes a controversial measure that would strengthen New York's abortion laws.

At the Eleanor Roosevelt Legacy Committee breakfast in Manhattan, Cuomo spoke of his mother, former first lady of New York, who set an example as a strong, outspoken woman, he said. He lamented that his daughters would have fewer opportunities than their male peers.

"Because they happen to be women, they have a different set of expectations and a different outlook than a man, and that is a cruel tragedy," Cuomo said during his speech. "We have to stop this subtle bias that is a man's world, and we have to stop it by admitting it and being willing to stand up and say it: Yes, there's discrimination against women."

Cuomo presented in his State of the State address a 10-point "Women's Equality Act," which also includes measures to fight against domestic violence, human trafficking and pay inequity as well as housing, lending and pregnancy discrimination.

At the event Monday, after touting New York's

past leadership in progressive social movements, he called the package "the most comprehensive women's equality agenda that has ever been done."

"With all our sophistication, with all our education, with all our wealth, in the greatest city and the greatest state on the planet, we still discriminate against women," Cuomo said. "It is intolerable."

A coalition of women's groups and other supporters of the agenda have been working with Cuomo to craft legislation, paying particular attention to the abortion measure.

Cuomo has argued it will simply codify federal abortion rights into state law, while opponents have likened the legislation to an "abortion expansion plan" in the state. He hasn't released his proposal yet, but conservatives and the Catholic Church staunchly oppose the Reproductive Health Act, a similar bill that's been floated in recent years.

Cuomo has said recently he has not released his abortion bill because he has not garnered enough bipartisan support for the legislation to pass the state Senate. The Senate GOP conference plans to block the bill, and some pro-life Democrats oppose it, too.

## Pennsylvania Electric Company Makes Changes to the Price to Compare Default Service Rider and Default Service Support Rider Beginning June 1, 2013

On February 19, 2013, Pennsylvania Electric Company's (Penelec) Waverly filed with the New York State Public Service Commission (PSC) a Petition to make changes to the Price to Compare Default Service (PTC) Rider and the Default Service Support (DSS) Rider for Penelec Waverly District default service customers to move Non-Market Based PJM costs (Regional Transmission Expansion Plan costs and Expansion cost recovery charges) from the PTC Rider to the DSS Rider beginning June 1, 2013. Penelec also made changes to the ESCO Manual. There is no expected impact of this change to customers.

The Company's tariff filing and ESCO Manual can be viewed at the PSC's website, [www.dps.ny.gov](http://www.dps.ny.gov), under Case 13-E-0067. The complete tariff, including these amendments, and the ESCO Manual, including this amendment, can also be viewed on both Penelec's and the PSC's websites. If you do not have access to the internet, you can view complete copies of Penelec's tariff amendments at the PSC's office at Empire State Plaza, Agency Building 3, Albany, NY 12223, or by visiting Penelec's offices that are open to the public.

*Mother's Day*  
Best Western Grand Victorian Inn  
HOME STYLE SALAD BAR  
ITALIAN WEDDING SOUP  
HOT ENTREE SELECTIONS

Slow Roasted Roast Beef (carved)  
Sliced Roast Pork Loin with Gravy  
Chicken Francaise  
Seafood Newberg over Rice  
Stuffed Shells in Marinara Sauce  
Mashed Potatoes and Gravy  
Green Bean Medley

**Sunday, May 12**  
11:30 am and 2:00 pm

Grand Ball Room seating for parties six or more at 11:30 am and 2:00 pm. Parties six or less will be seated in the Black Diamond Restaurant from 11:30 am - 4 pm.

Adults: \$19.95 plus tax  
Seniors (65+): \$18.95 plus tax  
Children (12 & under): \$9.95 plus tax  
Gratuity not included

**Reservations are required.**  
Please call 570-888-7711

ASSORTED DESSERTS & CHOCOLATE FONTAINE

AFFIDAVIT OF DISTRIBUTION

STATE OF N.Y. )

COUNTY OF Chemung )

CITY OF Elmira )

I, Eric Randolph, being duly sworn on oath now and during all times herein stated, have been the publisher and designated agent of the publication known as,

Star-Gazette ("Publication")

and have full knowledge of the facts herein stated as follows:

The ~~insert~~ <sup>ROP ad</sup> for FirstEnergy ("Ad/Advertiser") with Insertion Order No. 5964 was distributed to the Publication's full circulation on the 15<sup>th</sup> day of May, 2013.

By: [Signature]

Subscribed and sworn to before me  
this 21<sup>st</sup> day of May, 2002013

Notary Seal:

[Signature]  
Notary Public

SUZANNE J. WESTON  
Notary Public, State of New York  
No. 01WE4980512  
Residing in Broome County  
My Commission Expires 4-29-2015



AFFIDAVIT OF DISTRIBUTION

STATE OF N.Y. )

COUNTY OF Chemung )

CITY OF Elmira )

I, Eric Randolph, being duly sworn on oath now and during all times herein stated, have been the publisher and designated agent of the publication known as,

Star-Gazette ("Publication")

and have full knowledge of the facts herein stated as follows:

The ~~insert~~ <sup>ROP ad</sup> for First Energy ("Ad/Advertiser") with Insertion Order No. 5964 was distributed to the Publication's full circulation on the 20<sup>th</sup> day of May, 2013.

By: [Signature]

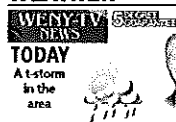
Subscribed and sworn to before me  
this 21<sup>st</sup> day of May, 2002 2013

Notary Seal:

[Signature]  
Notary Public

SUZANNE J. WESTON  
Notary Public, State of New York  
No. 01WE4980512  
Residing in Broome County  
My Commission Expires 4-20-2015

## WEATHER



**TODAY**  
A storm  
in the  
area

**HIGH 79 LOW 56** Today's forecast is provided by  
WENY-TV News chief meteorologist  
Joe Verna and John Mickey.

**TUESDAY**  
HIGH 82 LOW 59  
Mostly cloudy  
with t-storms

**WEDNESDAY**  
HIGH 81 LOW 62  
A couple of  
showers and a  
t-storm

**THURSDAY**  
HIGH 78 LOW 58  
Mostly cloudy,  
a couple of  
t-storms

**FRIDAY**  
HIGH 68 LOW 68  
Rain and  
drizzle  
possible

FOR THE LATEST FORECASTS [www.star-gazette.com/weather](http://www.star-gazette.com/weather)

## BY THE NUMBERS

ELMIRA	BINGHAMTON		ITHACA		
Yesterday's high	67°	Yesterday's high	67°	Yesterday's high	64°
Yesterday's low	50°	Yesterday's low	50°	Yesterday's low	53°
Normal high	71°	Normal high	67°	Normal high	68°
Normal low	46°	Normal low	47°	Normal low	44°
Record high	94° in 1986	Record high	87° in 1986	Record high	87° in 1986
Record low	24° in 2008	Record low	31° in 2008	Record low	24° in 2002

PRECIPITATION	PRECIPITATION		PRECIPITATION		
in inches	in inches	in inches	in inches	in inches	
March to date	8.07	March to date	1.83	March to date	8.33
Normal to date	1.27	Normal to date	2.88	Normal to date	1.30
Year to date	7.80	Year to date	11.02	Year to date	11.02
Normal year	11.21	Normal year	11.21	Normal year	11.21

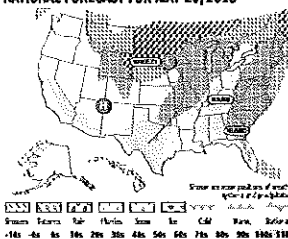
**POLLEN/MOLD COUNT**  
Tree: Very High (Pollen: Moderate) (Mold: None)  
Readings reflect pollen per cubic meter of air as of May 19.  
Source: Dr. Michael Delfino

**EXTREMES:** High 107, Vernon, TX Low 71, Bridgeport, CA

## THE MOON



## NATIONAL FORECAST FOR MAY 20, 2013



## REGIONAL

City	Today	Tomorrow
Albany	77-83	78-84
Albany, NY	77-83	78-84
Albany, NY	77-83	78-84
Albany, NY	77-83	78-84
Albany, NY	77-83	78-84
Albany, NY	77-83	78-84
Albany, NY	77-83	78-84
Albany, NY	77-83	78-84
Albany, NY	77-83	78-84
Albany, NY	77-83	78-84

## NATIONAL

City	Today	Tomorrow
Albany	77-83	78-84
Albany, NY	77-83	78-84
Albany, NY	77-83	78-84
Albany, NY	77-83	78-84
Albany, NY	77-83	78-84
Albany, NY	77-83	78-84
Albany, NY	77-83	78-84
Albany, NY	77-83	78-84
Albany, NY	77-83	78-84
Albany, NY	77-83	78-84

## INTERNATIONAL

City	Today	Tomorrow
Albany	77-83	78-84
Albany, NY	77-83	78-84
Albany, NY	77-83	78-84
Albany, NY	77-83	78-84
Albany, NY	77-83	78-84
Albany, NY	77-83	78-84
Albany, NY	77-83	78-84
Albany, NY	77-83	78-84
Albany, NY	77-83	78-84
Albany, NY	77-83	78-84

AccuWeather.com

## CHARLES WINDOW COMPANY

252 Clemens Center Parkway  
Elmira, NY • 607-732-1918

**Vinyl Replacement Windows**

**As Low As \$100**

Same Quality,  
I Will Meet Or Beat  
Anyone's Price

Installation Available

Same location, Same Great Service

## Banfield Baker's Planting Time



9 sq. ft. 24" wide by 54" long  
Please call for details and to reserve quantities - Orders Ship May 22nd, 2013

**GreenView Starter Fertilizer**

**16.99**  
per bag

**Potting Soil**

**39.99**  
per bag

**39.99**  
per bag

**39.99**  
per bag

**39.99**  
per bag

**39.99**  
per bag

**39.99**  
per bag

**39.99**  
per bag

**39.99**  
per bag

**39.99**  
per bag

**39.99**  
per bag

**39.99**  
per bag

**39.99**  
per bag

**39.99**  
per bag

**39.99**  
per bag

**39.99**  
per bag

**39.99**  
per bag

**39.99**  
per bag

**39.99**  
per bag

**39.99**  
per bag

**39.99**  
per bag

**39.99**  
per bag

**39.99**  
per bag

**39.99**  
per bag

**39.99**  
per bag

**39.99**  
per bag

**39.99**  
per bag

## LOUIES

102 S. Main Street, Horseheads  
[www.LouiesOnline.com](http://www.LouiesOnline.com)

**CATERING**

• Corporate Functions  
• Business Luncheons  
• Special Events

**739-4555**

Your Local Real Estate Experts



Art Ambrose  
Licensed Associate Real Estate Broker  
738-8900



Clay Ambrose  
Licensed Associate Real Estate Broker  
738-8999

RealtySA "The Best in the Business"

215 West Church St., Elmira, NY 14801

HomeFinder.com

Let us help you make your

**CORPORATE EVENT**

the best it can be.

With three Banquet Rooms  
available and full service  
packages for any budget,  
we can make that happen.

Grand Victorian Inn

255 Spring St., Sayre, PA • 717-861-6161 • 717-861-7711

717-861-7711

717-861-7711

717-861-7711

717-861-7711

717-861-7711

717-861-7711

717-861-7711

717-861-7711

717-861-7711

717-861-7711

717-861-7711

717-861-7711

717-861-7711

717-861-7711

717-861-7711

717-861-7711

717-861-7711

717-861-7711

717-861-7711

717-861-7711

717-861-7711

717-861-7711

# Pennsylvania Electric Company Makes Changes to the Price to Compare Default Service Rider and Default Service Support Rider Beginning June 1, 2013

On February 19, 2013, Pennsylvania Electric Company's (Penelec) Waverly filed with the New York State Public Service Commission (PSC) a Petition to make changes to the Price to Compare Default Service (PTC) Rider and the Default Service Support (DSS) Rider for Penelec Waverly District default service customers to move Non-Market Based PJM costs (Regional Transmission Expansion Plan costs and Expansion cost recovery charges) from the PTC Rider to the DSS Rider beginning June 1, 2013. Penelec also made changes to the ESCO Manual. There is no expected impact of this change to customers.

The Company's tariff filing and ESCO Manual can be viewed at the PSC's website, [www.psc.ny.gov](http://www.psc.ny.gov), under Case 13-E-0067. The complete tariff, including these amendments, and the ESCO Manual, including this amendment, can also be viewed on both Penelec's and the PSC's websites. If you do not have access to the internet, you can view complete copies of Penelec's tariff amendments at the PSC's office at Empire State Plaza, Agency Building 3, Albany, NY 12223, or by visiting Penelec's offices that are open to the public.

## HOW TO REACH US

## STAR-GAZETTE

Published by the Star-Gazette Press Company  
Division of Empire State Information Network, Inc.  
P.O. Box 1078, Binghamton, NY 13902-0778

Volume 43, Number 201

Main Switchboard 607-734-5151 or 800-876-8770

President and Publisher: Steven M. Bodor

Managing Editor: General Manager: John Wilson

Advertising Manager: John Zylch

Distribution Manager: Anthony Kaczynski

Circulation Manager: Theresa Schaefer

Production Manager: Theresa Schaefer

Editorial Manager: Theresa Schaefer

Editorial Manager: Theresa Schaefer

Editorial Manager: Theresa Schaefer

Editorial Manager: Theresa Schaefer

## CIRCULATION CUSTOMER SERVICE

1-800-254-0773

1-800-254-0773

1-800-254-0773

1-800-254-0773

1-800-254-0773

1-800-254-0773

1-800-254-0773

1-800-254-0773

1-800-254-0773

1-800-254-0773

1-800-254-0773

1-800-254-0773

1-800-254-0773

1-800-254-0773

payment to 127 call, call 1-800-254-0773 or go to [www.star-gazette.com](http://www.star-gazette.com)

1-800-254-0773

1-800-254-0773

1-800-254-0773

1-800-254-0773

1-800-254-0773

1-800-254-0773

1-800-254-0773

1-800-254-0773

1-800-254-0773

1-800-254-0773

1-800-254-0773

1-800-254-0773

1-800-254-0773

1-800-254-0773

# MORNING TIMES

201 N. LEHIGH AVE., SAYRE, PA 18840

PHONE (570) 888-9643 FAX (570) 888-6463

## AFFIDAVIT OF PUBLICATION

Commonwealth of Pennsylvania, }  
County of Bradford, } SS.

### MORNING TIMES

.....  
Personally appeared before the undersigned, a Notary Public,  
etc., which and for said County and State, Ashley Moore, the  
Advertising Manager of the "Morning Times", a daily newspaper  
published at Sayre, County of Bradford, State of Pennsylvania, who  
being duly sworn, states on oath that the notice of which the  
annexed is a copy

was published in said newspaper for 4 time(s),  
in the issues bearing date(s) of .....  
May 2, 7, 15 & 20  
.....

Affiant is not interested in the subject matter of the aforesaid  
notice or advertisement, and all allegations in the foregoing  
statement as to time, place and character of the publication are  
true.

Ashley Moore  
.....  
Advertising Manager

Sworn to and subscribed before me this .....  
day of ..... 20 .....

Frances L. Ellis  
.....  
Notary Public

My Commission Expires

NOTARIAL SEAL  
FRANCES L. ELLIS, Notary Public  
Sayre Boro, Bradford County  
My Commission Expires August 3 2014

# Waverly Dog Obedience Classes ANNOUNCED AT STRAY HAVEN

For the Morning Times  
WAVERLY — Carol Meyer, volunteer dog obedience instructor for Stray Haven Humane Society & SPCA, announces the beginning of obedience classes starting Monday, June 3 at 6 p.m. for adult dogs and puppies. There will also be a class starting Wednesday, June 5 at 11 a.m. for dogs of all ages.

Obedience for Monday class will be held June 3 at 6 p.m. and orientation for Wednesday class will be held June 5 at 11 a.m. Both orientations are dogless.

At the time of orientation, information will be given and data sheets handed out. It is mandatory for all to be present at the orientation meeting in order to take the class.

There will be a fee for the class that includes collar and lead.

You must pre register your dog by May 27.

For more information or to request an application, call Lynn or Tina at Stray Haven at 607-565-2859.

# TOWANDA BRADFORD COUNTY ISSUES MARRIAGE LICENSES

For the Morning Times  
TOWANDA — The following marriage licenses were issued in Bradford County:

Ralph H. Dooley of Wyalusing to Catherine McAndrew from Stevensville

Thomas Vazquez of Brooklyn, N.Y., to Paul Warburton of Wyalusing, N.Y.

Justin C. Mosier of Sayre to Calli Slife of Sayre

Anthony Swingle of Waverly to Jennifer Hudock of Waverly

James E. Skvasik of Sugar Run to Amy Lynn Mellett of Sugar Run

Eric Purrell of Gillett to Kathie Wilks of Gillett

Marc Waltemeyer of Wyalusing to Jessica R. Kommer of Wyalusing

Lewis C. Kipp of Sayre to Jennifer M. Wyant of Sayre

Nolan A. Milgate of Wyalusing to Mary E. Meehan of Wyalusing

Richard Finnegan of Wysox to Gerrie A. Daly of Wysox

Timothy S. Johnson of Wyalusing to Leann Griffee of Wyalusing

# Lifestyle



VALLEY HEALTH & LIVING

# MAKE YOUR NEXT FAMILY VACATION TRULY MEANINGFUL

If you're tired of taking the same old kinds of vacations, consider looking into more meaningful travel alternatives. Whatever your interests are, there are great ways to infuse your vacation with purpose.

Learn a Language — Are your instructional language CDs collecting dust? Fast track the learning process with complete immersion. Consider taking a crash course abroad, where you can easily apply the skills you pick up in the classroom each day out in the streets, stores and cafes each evening.

Benefit a Charity — A traditional vacation club offers members access to vacation homes, vacation rentals, yachts and luxury hotels at discounted rates. A convenient method of coordinating family trips, it helps vacationers know what they are getting with no unexpected surprises.

Consider joining a vacation club that offers such benefits, but with a charitable twist. For example, the Getaway 2 Give collection, the only philanthropic vacation club in the world, makes charitable donations to charities with a portion of your membership fee and travel accommodation fees.

"Why should you just explore the world on your vacation when you can also make it better?" asks Adam Capes, President and Co-Founder of the Getaway to Give Collection.

Since its inception, the Getaway 2 Give Collection has donated to such deserving charities as Challenge Aspen, which provides cultural experiences for people with disabilities, and Jack and Jill Late Stage Cancer Foundation (JAIF), which gives children who will lose their mom or dad to cancer a timeout together as a family and an opportunity to make final, lasting, happy memories.

Get Natural — Get up close to nature responsibly. Visit the world's most fragile ecosystems in a low-impact manner. Many such "ecotourism" experiences donate a portion of the profits from your trip to local ecological conservation efforts and local economies.

Volunteer — Take a break from sunbathing and look for local volunteer opportunities at your destination. Interacting with locals in a meaningful way is an effective way to transition from tourist to true traveler.

Consider building houses for low-income families through a program like Habitat for Humanity, or look into work for which you are qualified. For example, doctors and nurses are often needed after natural disasters to provide medical aid to locals.

Often known as "voluntourism," you can find a personalized experience through a program like the Getaway 2 Give Collection, which offers both domestic and foreign opportunities, benefiting

Provided by StatePrint Media, with information from [www.thegatewaytogive.com](http://www.thegatewaytogive.com). Submitted for the Morning Times

# check us out on the WEB



Providing Quality Carpentry Service for Over 20 Years

- Additions • Garages • Decks
- Siding • Kitchens • Bathrooms
- Windows and More

Free Estimates and Fully Insured. PA-009312 Family Owned & Operated

Robinson Contracting + Landscaping

4819 Milan Road, Milan, PA (570) 882-1231

# CUSTOM REBUILDERS

102 N. ELMIRA ST., ATHENS, PA 888-6651

WE STOCK  
ATV & MOTORCYCLE BATTERIES

WE REPAIR  
PLASTIC TANK RADIATORS

local people, ecosystems and wildlife.

Inception of volunteer travel can be linked to the beginnings of Volunteer services incorporated in 1958. These services and that of the U.S. Peace Corps, established in 1961 during the John F. Kennedy administration, have paved the way for volunteer travel and volunteer vacations throughout the world.

A survey by CheapTickets.com of 430 US adults 18 and older found that half of their respondents would consider voluntourism for their next vacation. In addition, 55-percent of respondents would consider adding volunteer activities to an already planned vacation. While 48 percent had heard about volunteer vacations, only 5 percent of applicants had actually participated in one.

With a little planning and research, your future travels can have a truly positive and enriching impact on you, your family, and the world.

# Pennsylvania Electric Company Makes Changes to the Price to Compare Default Service Rider and Default Service Support Rider Beginning June 1, 2013

On February 19, 2013, Pennsylvania Electric Company's (Penelec) Waverly filed with the New York State Public Service Commission (PSC) a Petition to make changes to the Price to Compare Default Service (PTC) Rider and the Default Service Support (DSS) Rider for Penelec Waverly District default service customers to move Non-Market Based PJM costs (Regional Transmission Expansion Plan costs and Expansion cost recovery charges) from the PTC Rider to the DSS Rider beginning June 1, 2013. Penelec also made changes to the ESCO Manual. There is no expected impact of this change to customers.

The Company's tariff filing and ESCO Manual can be viewed at the PSC's website, [www.dps.ny.gov](http://www.dps.ny.gov), under Case 13-E-0067. The complete tariff, including these amendments, and the ESCO Manual, including this amendment, can also be viewed on both Penelec's and the PSC's websites. If you do not have access to the internet, you can view complete copies of Penelec's tariff amendments at the PSC's office at Empire State Plaza, Agency Building 3, Albany, NY 12223, or by visiting Penelec's offices that are open to the public.

# IN MEMORY ADS WILL BE PUBLISHED SATURDAY, MAY 25 Deadline is May 20 at 5 p.m.

Written tributes only. Sorry, no photos.

All Veterans ads will have a flag displayed in their ads, so be sure to check the box on the form.

~ EXAMPLE ~

In Memory of  
**JOHN DOE**

of Waverly, NY  
January 3, 1944-  
September 3, 2007  
Husband of  
Jane Doe

**IN MEMORY ADS - \$10 MUST BE PREPAID**  
PLEASE PRINT CLEARLY

In Memory of \_\_\_\_\_ (full name)

from \_\_\_\_\_ (Place) Veteran Yes ☐ No ☐

Date of Birth & Death \_\_\_\_\_

YOUR Relationship to deceased \_\_\_\_\_ Your Name \_\_\_\_\_

Daytime phone number \_\_\_\_\_  
(For questions only - will not be published in ad.)  
Bring or mail to:  
Morning Times - 201 N. Lehigh Ave., Sayre, PA 18840

# BIRTH ANNOUNCEMENTS

**KENNEDY**  
2013, at the Robert Packer Hospital in Sayre, Pa.

Born to Amanda and Jonathan Kennedy of Roseville, Pa., a son, Jonathan, on April 4, 2013, at the Robert Packer Hospital in Sayre, Pa.

**MARTIN**  
Born to Angela and Cameron Martin of Towanda, Pa., a daughter, Ava, on April 4, 2013, at the Robert Packer Hospital in Sayre, Pa.

**VARGA/MAYO**  
Born to Trisha Varga and Anthony Mayo of Waverly, N.Y., a daughter, Imajin, on April 5, 2013, at the Robert Packer Hospital in Sayre, Pa.

**NEWFANG**  
Born to Tara Newfang of Sayre, Pa., a daughter, Haylee, on April 5, 2013, at the Robert Packer Hospital in Sayre, Pa.

**FISKE/WRIGHT**  
Born to Sarah Fiske and Joseph Wright of Waverly, N.Y., a daughter, Amelia, on April 5, 2013, at the Robert Packer Hospital in Sayre, Pa.

**NAPP**  
Born to Catherine and Ryan Napp of Towanda, Pa., a son, Carter, on April 6,

**KELTNER/TUNNICLIFF**  
Born to Meredith Keltner and Aaron Tunnickliff of Lockwood, N.Y., a daughter, Aurora, on April 7, 2013, at the Robert Packer Hospital in Sayre, Pa.

**UNRUH**  
Born to Erin and Jon Unruh of Ulster, Pa., a daughter, Addison, on April 7, 2013, at the Robert Packer Hospital in Sayre, Pa.

**BURROWS**  
Born to Alexis and Darin Burrows of Sayre, Pa., a daughter, Lilly, on April 8, 2013, at the Robert Packer Hospital in Sayre, Pa.

**COLDIRON**  
Born to Kelly and Justin Coldiron of Sayre, Pa., a daughter, Addyson, on April 8, 2013, at the Robert Packer Hospital in Sayre, Pa.

**HOBDA/MILLER**  
Born to Kristal Hobday and Michael Miller of Sayre, Pa., a son, Iziah, on April 9, 2013, at the Robert Packer Hospital in Sayre, Pa.

SAYRE

# Valley Community Theater to hold auditions this week

By KRISTY WESTBROOK  
Staff Writer

SAYRE — The Valley Community Theater will be holding auditions this week for their summer performance of "Mame."

Auditions will be held this Friday from 6 to 9 p.m. and this Saturday from 3 to 6 p.m. in the Sayre Area High School Auditorium.

Individuals through the age of 99 are able to tryout for the production.

Those who would like to audition should prepare a musical/show tune showcasing their range and vocal ability. They should also bring an accompaniment CD, or music for an accompanist, or they may be prepared to sing a cappella. A song with accompaniment is preferred.

A short monologue should also be prepared demonstrating the speaking voice and projection of those auditioning.

The Valley Community Theater began last summer in response to the many requests for a summer musical production company in the Valley. Last year's production was "Annie Get Your Gun."

"Mame" is a musical based on the 1955 novel "Annie Mame" by Patrick Dennis and a 1956 Broadway play, by Lawrence and Lee which starred Rosalind Russell.

The musical is set in New York, spanning the Great Depression and World War II, focusing on an "eccentric bohemian," Mame Dennis, whose famous motto is "life is a banquet and most are starving to death."

"Her fabulous life with her wealthy friends is interrupted when the young son of her late brother arrives to live with her," according to the musical's synopsis. "They cope with the Depression in a series of adventures."

The show dates for "Mame" will be July 18 through 20 at 7 p.m. in the Sayre Area High School auditorium.

Those interested in volunteering for a behind the scenes position, such as costumes, set construction, props, advertising and public relations assistance, ushering, ticket sales, or other tasks should contact the Valley Community Theater at 607-565-7270.

The organization also asked for those that would like to provide monetary support for the newly formed theater company and its performances, to be payable to the Sayre Area School District, with "Valley Community Theater" on the memo line. Donations will be accepted no later than Friday, July 6 to ensure donors are included in the productions playbill. They may be sent to the Valley Community Theater, 306 Murray St., Sayre, PA 18840.

The co-producers/directors of this show are Leslie Fagan, Luke Skerpo, and David Zimmerman.



**CUSTOM REBUILDERS**  
102 N. Elmira St., Athens, PA  
888-6651

**35** Years Experience in Radiator Repair  
Largest Battery Selection in the Area

**SAYRE THEATRES**  
MON, MAY 6 - THURS, MAY 9

**NEW SHOWING**  
"THE MONUMENTS MEN"  
MON, THUR 4:45 PM  
PG-13

**FIELD OVER**  
"FIELD OVER"  
TUE, WED 4:45 PM  
PG-13

**HEAD OVER**  
"HEAD OVER"  
THU, FRI 4:45 PM  
PG-13

**KEYSTONE THEATRES**  
"ORLYON" (PG-13)  
"THE MONUMENTS MEN" (PG-13)

HARRISBURG

## PA. HOUSE PASSES PROPOSAL TO LOWER BUSINESS TAXES

HARRISBURG, Pa. (AP) — A proposal to eventually cut business taxes by hundreds of millions of dollars a year easily passed the Pennsylvania House on Monday amid heated debate over how much it would help the state's economy, if at all.

The Republican-sponsored proposal would cut the corporate net income tax rate from 10 percent to 7 percent over 10 years beginning in 2015. If passed by itself and enacted this year, it would cost state coffers an estimated \$600 million to \$800 million a year.

Supporters said the bill's set of changes would make Pennsylvania's business climate more favorable and produce more jobs.

"We finally have the opportunity to put Pennsylvania back into the competition," said Rep. Stephen Bloom of Cumberland County, who joined all fellow Republicans and 21 Democrats to pass the measure.

Democratic opponents, however, described it as a massive giveaway to big corporations, and linked it to Republican policies they blame for the state's anemic employment situation.

"If tax cuts, tax credits and tax incentives lead to job creation, where are the jobs?" said Rep. Phyllis Mundy of Luzerne County, the ranking Democrat on the Finance Committee. "Why do we still have one of the highest unemployment rates in the nation?"

In floor debate, Democrats said middle class taxpayers would be stuck paying for the business tax cuts, but Republicans predicted that overall revenues would increase because of increased business activity.

"Reducing taxes actually brings in more revenue, something I think we're all anxious for," said Rep. Seth Grove, R-York.

The proposal also stiffens rules for the so-called Delaware loophole, a practice where companies shield revenues from state taxes by setting up a holding company for their intangible assets in a lower tax state. The bill takes an approach currently used in 23 other states, and is projected to raise more than \$70 million a year.

It also would allow businesses to offset \$5 million in losses, or 30 percent of income, against future profits — the current limit is \$3 million.

The bill was sent to the Senate with a 129-65 vote. A similar measure passed the House almost exactly a year ago, then died when the session ended in November, although some of that bill's other provisions were adopted into law through a different legislation.

The bill's prospects in the Senate are unclear, but the prime sponsor, Rep. Dave Reed, R-Indiana, said passage in the House was "one step of the process."

Also Monday, Republican leaders met privately with GOP Gov. Tom Corbett with the state budget season in its final two-month push, although details were hard to come by. Corbett said the meeting touched on pensions, transportation and privatizing the state liquor system.

Corbett plans to join Republican lawmakers Tuesday for a pension-related news conference.

SAYRE

## WATS wins state award

For the Morning Times

SAYRE — Sayre-based WATS-WAVR Radio's popular holiday broadcast "Christmas Is For Kids" won a first-place honor for programming excellence in Hershey.

President and General Manager Chuck Carver accepted the Pennsylvania Association of Broadcasters' Award for "Best Small Market Radio Station Sponsored Event" Monday at the Hotel Hershey.

This is the second straight year that the Salvation Army benefit broadcast has won this trophy.

Last December's show at the Sayre Theatre raised \$60,000 in cash and hundreds of toys for needy Valley families.

This week's honor marks the 72nd time Choice Radio has earned a first-place award in either national or statewide programming competition under the current ownership.

## Tax

From Page A1

When speaking with state legislators, Moore said there needs to be more special education funding and charter school reform due to "double dipping" of the pension aspect of the school district's expenditures.

Moore said the Sayre Area School District currently spends approximately \$350,000 on students within the district that use a charter or cyber school.

The district's addition of healthy foods has caused an increase in food costs, but this was generally paid for by the rise in prices for school lunches, Moore said. The district still plans on doing its summer food program this summer in collaboration with summer recreation.

Moore also stated that he saved the district over \$13,000 by refinancing its natural gas price.

## Jailed

From Page A1

Street at 7:22 p.m., police said.

No one was injured in this incident, police said.

Leonard fled from officers, but was eventually apprehended, police said.

Leonard was arraigned before Magisterial District Judge Jonathan Wilcox of Troy and was committed to the Bradford County Correctional Facility in lieu of \$80,000 bail.

Leonard will appear before Magisterial District Judge Michael Shaw of Athens Township for a preliminary hearing today.

## Canton

From Page A1

secondary to a contact gunshot, and his manner of death was ruled as a suicide, said Carman.

Routine toxicology is being performed on both decedents, said Carman.

The pair were discovered at Reico's home at 360 E. Main St. at 9:22 a.m. Sunday, said Carman.

Reico, who was discovered in bed, was pronounced dead at the scene, said Carman.

She left behind two children, a 5-year-old and a one-month-old, said Carman.

Chisman, who lived at 173 S. Washington St., was transported to Robert Packer Hospital in Sayre and was pronounced dead there at 7:44 p.m. Sunday, said Carman.

Chisman, who is married, is the father of Reico's one-month-old baby, said Carman.

**check us out**  
on the  
**WEB**  
TIMES

## Pennsylvania Electric Company Makes Changes to the Price to Compare Default Service Rider and Default Service Support Rider Beginning June 1, 2013

On February 19, 2013, Pennsylvania Electric Company's (Penelec) Waverly filed with the New York State Public Service Commission (PSC) a Petition to make changes to the Price to Compare Default Service (PTC) Rider and the Default Service Support (DSS) Rider for Penelec Waverly District default service customers to move Non-Market Based PJM costs (Regional Transmission Expansion Plan costs and Expansion cost recovery charges) from the PTC Rider to the DSS Rider beginning June 1, 2013. Penelec also made changes to the ESCO Manual. There is no expected impact of this change to customers.

The Company's tariff filing and ESCO Manual can be viewed at the PSC's website, [www.psc.ny.gov](http://www.psc.ny.gov), under Case 13-E-0007. The complete tariff, including these amendments, and the ESCO Manual, including this amendment, can also be viewed on both Penelec's and the PSC's websites. If you do not have access to the Internet, you can view complete copies of Penelec's tariff amendments at the PSC's office at Empire State Plaza, Agency Building 3, Albany, NY 12223, or by visiting Penelec's offices that are open to the public.

<b>DANDY</b> "A Dandy Place to Run for Those Extras" Only 4 Locations PRICES IN EFFECT APRIL 20TH - MAY 27TH	<b>WISE</b> • POTATO CHIPS 10oz • CHEESE DOODLES 8-12oz • POPCORN 5.5oz <b>\$2.00</b>
<b>Perry's Ice Cream</b> <b>COUNTRY GOODNESS</b> <b>\$2.89</b>	<b>UTZ</b> • PRETZELS 10oz • KETTLE 7.5oz <b>\$2.19</b> <b>\$2.59</b>
<b>HERRS</b> • KETTLE 8oz • CHIPS 10oz <b>2/\$6.00</b>	<b>SNYDER'S</b> • PRETZEL 8oz • TORTILLA 10oz <b>\$2.99</b>
• 1 liter PA <b>99¢</b> • 1 liter NY <b>\$1.09</b>	<b>MONSTER</b> <b>2/\$4.00</b>
<b>Twinklers</b> <b>2/\$5.00</b> New Red, White & Blue	<b>59¢</b> LITTLE DEBBIE • MINI DONUTS • STICKS • ICED HONEY • PECAN
<b>ALL CARTON CIGARETTES</b> <b>PA STATE MINIMUM</b> <small>SURGEON GENERAL'S WARNING: QUITTING NOW GREATLY REDUCES SERIOUS RISKS TO YOUR HEALTH.</small>	<b>Schaefer</b> • 1/2 GALLON TEA <b>2/\$3.00</b> • 1/2 GALLON DRINK <b>2/\$2.50</b>

## Killed

From Page A1

to arrest Maher following the conclusion of that buy, which had been set up to occur on North Elmer Avenue in Sayre Borough, police explained.

Maheer was originally supposed to arrive on the scene by foot, but officers were informed shortly before the buy occurred that Maheer would be arriving in a vehicle and had a .45-caliber handgun in the vehicle with him, police said.

Once Maheer arrived on the scene, law enforcement officers began converging on the scene, police said.

Maheer noticed the approaching officers and pulled away from the scene at a rapid pace, police said.

During his escape, Maheer attempted to strike one of the officers with his vehicle, but the officer was able to avoid being struck, police said.

From there, law enforcement officers proceeded to pursue Maheer, with said pursuit reaching in excess of 80 miles per hour and traveling into Tioga County, N.Y., police said.

The pursuit continued through Tioga County, but was eventually called off "due to the speeds and aggressive manner in which Maheer was driving," said police.

Maheer was also operating his vehicle without his headlights at time, said police said.

Officers from Sayre, Athens Township, Athens Borough, Tioga County Sheriff's Deputies and New York State Police took up a search for Maheer and his vehicle in and around the Waverly and Barton areas, said police.

Those searches proved negative and Maheer was not located, resulting in the searches being called off, police said.

Maheer was eventually located and taken into custody, but police did not release any details on that capture.

**No Shoes Required**  
**MORNING TIMES**  
A person is shown sitting at a desk reading a newspaper.



# Lifestyle

## LIBRARY

### ATHENS

Come enjoy some good books at the Spalding Memorial Library, located at 724 S. Main St., Athens. 570-888-7117 or on the Web at [www.spaldinglibrary.org](http://www.spaldinglibrary.org). The library is open Monday-Thursday from noon until 8 p.m.; Friday from 9 a.m.-4 p.m.; and Saturday from 9 a.m.-1 p.m.

#### Upcoming Events

Wednesday, May 22 - Sign Language 5-6 p.m.

Thursday, May 23 - Teen Book Club 6:00-7:30 p.m.; The Icebound Land 1 p.m. - Crazy Cats.

Farmer's Market starts on May 25, from 8 a.m. - noon. Vendors must be registered.

Summer Reading will start in June and registration forms will be available the first week of June. Summer Reading begins Monday, June 17. June calendars are available at the library.

We are continuing our book sale, new items added weekly. Stop in and check out the books.

The library is looking for craft supplies to use for story times. If you have any pom-poms, they would greatly be appreciated. See Becky for details.

Threads (bring your project and share old and new techniques) Tuesday evenings, 6:30 to 8 p.m.

The Toga Point Museum houses a research library where the public may study topics relating to its collection, such as local history, Native American archaeology and culture, transportation and genealogy.

There is no charge to use the library, but research appointments should be made in advance because of space limitations. Call 570-888-7225 to schedule research appointments.

### SAYRE

The Sayre Public Library hours are: Tuesday and Thursday from 10 a.m. to 7:30 p.m. and Wednesday and Friday from 10 a.m. to 5 p.m. and Saturday 10 a.m. to 2 p.m.

For those new to computers, free classes will be held on Thursday mornings. Patrons are encouraged to sign up early — space is limited. For preschool children, there is a special story hour on most Wednesdays at 10:30 a.m. Space is limited — register early.

For school-age children, a craft club is held on most Saturdays at 10:30 a.m. Space is limited — register early. A variety of free workshops and seminars for adults are held throughout the month. Stop by or call the library for updates.

The Teen Council is accepting new members. Applications are available at the library or on the library Web site.

The library features free wireless and eight computers with Internet access that patrons can use free of charge.

The library also provides a free web based language program — Mango — a simple, practical introduction to a language — in 22 languages and English as a Second Language (ESL) courses in 14 languages.

Patrons can download the latest best sellers, fiction, and nonfiction audio books and e-books free of charge through the library. Patrons are also able to make holds, access the library catalog, make suggestions for new purchases, renew books, and access a wealth of online information through the Sayre Public Library's Web site at [www.sayrepl.org](http://www.sayrepl.org).

Through the library's website patrons have access to Tumblebooks, an incredible collection of 300 animated talking picture books and 40 chapter books which teach kids the joy of reading in a format they'll love. The collection is geared for children ages one through elementary school.

Sayre Public Library is a member of the commonwealth's Virtual Library. This provides patrons with access to free subscription databases, the union catalog, and 24-hour free reference service, and more. Simply log on to [sayrepl.org](http://sayrepl.org) and click the link to Power Library.

### WAVERLY

The Waverly Free Library hours are: Tuesday, 11 a.m. - 6 p.m.; Wednesday, 10 a.m. - 6 p.m.; Thursday 11 a.m. - 9 a.m.; Friday, 11 a.m.-5 p.m. and Saturday, 11

a.m. - 2 p.m.

Our pre-school story hour is held on Wednesday's from 10-11 a.m. Please bring your little ones and join in on all the fun!

The next board meeting for the library will be held on May 13th, starting at 6pm. This is an open meeting and the public is encouraged to attend.

The winner of our Basket Raffle is Ann Phinney!! A big thank you goes out to everyone who bought tickets for the basket in support of our Young Adult/Teen space. Your contributions will help in making this a reality. Thank you so much!

Sign-ups for our Adult Computer Literacy classes have begun. Please come in or call to sign up for classes. We still have openings for the following sessions: "Job Application Online", "Is Facebook Your Friend?", "Introduction to Facebook". We only have room for 6 participants and spaces fill up quickly. You MUST sign up for each individual session you plan to take. Signing up for one does not automatically sign you up for all.

The library has created a new book discussion group for adults. Our next meeting will be held June 6 from 6-8. Everyone is welcome to come and join in the lively discussion of whatever you are currently reading or have read or just sit and listen. It's a great way to hear what others are reading in the community and what they liked or didn't like about the book. Refreshments will be served!

The Finger Lakes Parenting Network will begin holding meetings in the community room in May. Due to confidentiality, please contact Tracey Briggs at 607-776-2164 for the exact date and time. This is a parent-governed organization, focused on the needs of children and youth with emotional, behavioral, developmental, and/or mental disorders and their families. Their mission is to support and empower families so that they can improve the quality of their lives and help their child to achieve his/her full potential within the community.

If you have a group activity that is looking for a place to meet, please contact the library to discuss the use of our beautiful community room. We would love to get a knitters group started and possibly a yoga class!

### NICHOLS

Cady Library in Nichols regular hours are: Monday, 2-8:30 p.m.; Tuesday, 2-5 p.m.; Wednesday, 2-5 p.m.; Thursday, 2-8 p.m.; Friday, 2-5 p.m.; and Saturday, 10 a.m.-noon.

### WEST BURLINGTON

The Bradford County Library is located on Route 6, midway between Troy and Towanda. For any questions call the library at 570-297-2436 during library hours: Monday-Thursday 8 a.m. to 8 p.m., Friday 8 a.m. to 6 p.m. and Saturday 10 a.m. to 5 p.m.

The monthly book discussion at the County Library, 1 p.m., Tuesday, May 21, will be Pulitzer Prize winning Mountains Beyond Mountains, by Tracy Kidder. This moving account of Paul Farmer shows how one person can make a difference in solving global health problems through an understanding of the interaction of politics, social systems, and disease.

Paul Farmer grew up in Florida, worked in a citrus grove and learned first hand about the conditions of Haitian migrant laborers. His humanitarian instincts, his eventual medical training at Harvard, and his work in medical anthropology combined to form his goal: "to provide first world health care for third world peoples." Interviews with Paul Farmer can be accessed on youtube.com.

The discussion is open. The subject is inspiring and will help you to believe in happy endings. The book is available at the libraries in the county. Tea and treats are provided.

### ULSTER

Mather Memorial Library is open Tuesday - Thursday, 11 a.m.-7 p.m., Friday 2 p.m. - 6 p.m. and Saturday hours are 9 a.m.-2 p.m.

Preschool story hour has begun again. All area preschoolers and their caregivers are welcome to attend. Please call or visit the library for more details.

No Shoes Required.

MORNING TIMES

22 Second St., Sayre, PA  
Box 88, Sayre, PA 16841  
Tel: 570-888-7117  
Fax: 570-888-7118  
Email: [info@morning-times.com](mailto:info@morning-times.com)

15% Flower Fabric  
In May  
Check out our  
Online Store!

15% Flower Fabric  
In May  
Check out our  
Online Store!

15% Flower Fabric  
In May  
Check out our  
Online Store!

15% Flower Fabric  
In May  
Check out our  
Online Store!

15% Flower Fabric  
In May  
Check out our  
Online Store!

15% Flower Fabric  
In May  
Check out our  
Online Store!

15% Flower Fabric  
In May  
Check out our  
Online Store!

15% Flower Fabric  
In May  
Check out our  
Online Store!

15% Flower Fabric  
In May  
Check out our  
Online Store!

15% Flower Fabric  
In May  
Check out our  
Online Store!

15% Flower Fabric  
In May  
Check out our  
Online Store!

15% Flower Fabric  
In May  
Check out our  
Online Store!

15% Flower Fabric  
In May  
Check out our  
Online Store!

15% Flower Fabric  
In May  
Check out our  
Online Store!

15% Flower Fabric  
In May  
Check out our  
Online Store!

15% Flower Fabric  
In May  
Check out our  
Online Store!

15% Flower Fabric  
In May  
Check out our  
Online Store!

15% Flower Fabric  
In May  
Check out our  
Online Store!

15% Flower Fabric  
In May  
Check out our  
Online Store!

15% Flower Fabric  
In May  
Check out our  
Online Store!

15% Flower Fabric  
In May  
Check out our  
Online Store!

15% Flower Fabric  
In May  
Check out our  
Online Store!

15% Flower Fabric  
In May  
Check out our  
Online Store!

15% Flower Fabric  
In May  
Check out our  
Online Store!

15% Flower Fabric  
In May  
Check out our  
Online Store!

15% Flower Fabric  
In May  
Check out our  
Online Store!

15% Flower Fabric  
In May  
Check out our  
Online Store!

15% Flower Fabric  
In May  
Check out our  
Online Store!

15% Flower Fabric  
In May  
Check out our  
Online Store!

15% Flower Fabric  
In May  
Check out our  
Online Store!

15% Flower Fabric  
In May  
Check out our  
Online Store!

15% Flower Fabric  
In May  
Check out our  
Online Store!

15% Flower Fabric  
In May  
Check out our  
Online Store!

15% Flower Fabric  
In May  
Check out our  
Online Store!

15% Flower Fabric  
In May  
Check out our  
Online Store!

15% Flower Fabric  
In May  
Check out our  
Online Store!

15% Flower Fabric  
In May  
Check out our  
Online Store!

15% Flower Fabric  
In May  
Check out our  
Online Store!

15% Flower Fabric  
In May  
Check out our  
Online Store!

**SUSAN'S PET GROOMING**  
has moved to  
107 E. Lockhart St.  
(East Side) Sayre, PA  
888-1462

**WE ARE NOW OPEN MON.-FRI. 9-6PM**

**Backwoods Primitives**  
Country & Primitive Home Decor  
**Memorial Weekend Sale!**  
Fri. 5/24 and Sat. 5/25  
**10% to 25% OFF Entire Store!**  
Sampling NEW Gourmet Dips!  
122 W. Packer Ave., Sayre, PA  
570-888-0897  
Store Hours: Mon. 11-4pm, Tues. - Friday 10-5, Saturday 10-2

**ATTENTION HOMEOWNERS**  
**HIRE A LOCAL CONTRACTOR**  
OVER 25 YEARS OF LOCAL SERVICE  
**SAVERCOOL & SON**  
CONTRACTING  
and POWERWASH  
Your home improvement specialist!  
Roofing • Siding • Kitchens • Baths • Additions • New Construction  
CALL TODAY FOR YOUR FREE ESTIMATE  
State & Locally Licensed & Insured  
570-888-6661  
[www.SaverCoolAndSon.com](http://www.SaverCoolAndSon.com)

## Pennsylvania Electric Company Makes Changes to the Price to Compare Default Service Rider and Default Service Support Rider Beginning June 1, 2013

On February 19, 2013, Pennsylvania Electric Company's (Penelco) Waverly filed with the New York State Public Service Commission (PSC) a Petition to make changes to the Price to Compare Default Service (PTC) Rider and the Default Service Support (DSS) Rider for Penelco Waverly District default service customers to move Non-Market Based PJM costs (Regional Transmission Expansion Plan costs and Expansion cost recovery charges) from the PTC Rider to the DSS Rider beginning June 1, 2013. Penelco also made changes to the ESCO Manual. There is no expected impact of this change to customers.

The Company's tariff filing and ESCO Manual can be viewed at the PSC's website, [www.dps.ny.gov](http://www.dps.ny.gov), under Case 13-E-0067. The complete tariff, including these amendments, and the ESCO Manual, including this amendment, can also be viewed on both Penelco's and the PSC's websites. If you do not have access to the internet, you can view complete copies of Penelco's tariff amendments at the PSC's office at Empire State Plaza, Agency Building 3, Albany, NY 12223, or by visiting Penelco's offices that are open to the public.

## IN MEMORY ADS WILL BE PUBLISHED SATURDAY, MAY 25 Deadline is May 20 at 5 p.m.

Written tributes only. Sorry, no photos.

All Veterans ads will have a flag displayed in their ads, so be sure to check the box on the form.

~ EXAMPLE ~

In Memory of  
**JOHN DOE**  
of Waverly, NY  
January 3, 1944 -  
September 3, 2007  
Husband of  
Jane Doe

### IN MEMORY ADS - \$10 MUST BE PREPAID PLEASE PRINT CLEARLY

In Memory of \_\_\_\_\_ (full name)  
from \_\_\_\_\_ Veteran Yes ☐ No ☐  
(Place)  
Date of Birth & Death \_\_\_\_\_  
YOUR Relationship to deceased \_\_\_\_\_ Your Name \_\_\_\_\_  
Daytime phone number \_\_\_\_\_  
(For questions only - will not be published in ad.)  
Bring or mail to:  
Morning Times - 201 N. Lehigh Ave., Sayre, PA 18840



**Grab a Subscription**  
570-888-9643  
or subscribe online @ [www.morning-times.com](http://www.morning-times.com)

**MORNING TIMES**  
A5