

## The Dax Law Firm, P.C.

54 State Street, Suite 805  
Albany, New York 12207  
www.daxlawfirm.com

Telephone: (518) 432-1002  
Facsimile: (518) 432-1028

John W. Dax

William F. McLaughlin\*

*\*Also Admitted in Massachusetts & District of Columbia*

August 8, 2014

Via Electronic Mail [Kevin.casutto@dps.ny.gov](mailto:Kevin.casutto@dps.ny.gov)

Kevin J. Casutto, Administrative Law Judge  
NYS Department of Public Service  
Office of Hearings and Alternative  
Dispute Resolution  
3 Empire State Plaza  
Albany, NY 12223-1350

Re: Case 13-T-0292 WEST POINT PARTNERS, LLC  
Converter Station Plans

Dear Judge Casutto:

In the course of discovery, West Point Partners, LLC (WPP) has responded to a variety of questions and requests for details concerning the preliminary plans and layouts of the two converter stations. In several instances, WPP has provided drawings in order to respond to these inquiries. Over this same period, several changes and refinements have been made that were not reflected in drawings provided in response to earlier requests. In addition, in one set of figures we provided, the preliminary layout depicted was inconsistent with a previous layout including the layout used to model sound impacts. Although that error was subsequently corrected, the overall result is that there are a number of figures in the “discovery record” that are either inaccurate or not up-to-date.

WPP is providing a revised drawing set that provides corrected and up-to-date depictions of the preliminary layouts of both the Northern and Southern Converter Stations. In Drawing Nos. NC-1, NC-2 and SC-1, the converter station locations are shown in a scale of one inch to 100 feet to depict the relationship of the stations to their surroundings. Drawing Nos. NC-3, NC-4 and SC-2 depict the preliminary layouts of the equipment within the station sites at a scale of one inch to 50 feet.

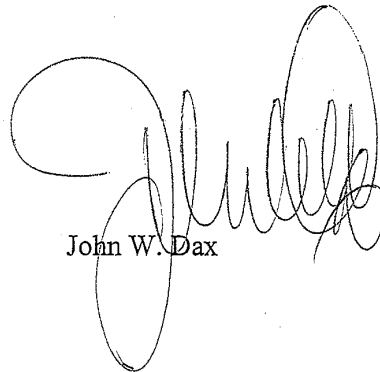
It is WPP’s intention that this drawing set replace and supersede the following:

1. Figures 2-2A to 2-4A, provided in WPP’s supplemental information package under letter dated August 22, 2013, in response to Deficiency Items 2 and 3;

Kevin J. Casutto, Administrative Law Judge  
NYS Department of Public Service  
Office of Hearings and Alternative Dispute Resolution  
August 8, 2014  
Page 2 of 2

2. Figures N-1, N-2 and S-1, provided in response to Deficiency Item 8;
3. Figures CN-1, CN-2 and CS-1, provided in response to Additional Information Requested by DPS, Request F, under letter dated September 6, 2013;
4. Drawing S-1, provided in response to Interrogatory/Document Request DPS-42; and
5. Drawings CN-1 and CN-2, provided in response to Interrogatory/Document Request DPS-39.

Respectfully submitted,



John W. Dax

JWD:imd

Enclosures

cc: Hon. Kathleen H. Burgess  
NYPSC Active Parties

**PLANS FOR CONVERTER STATIONS**

**WEST POINT TRANSMISSION PROJECT**

**ATHENS AND CORTLANDT (VERPLANCK), NY**

**AUGUST 6, 2014**

**PREPARED BY:**



environmental consulting  
& engineering services

100 Fifth Avenue, 5th Floor  
Waltham, Massachusetts 02451  
p 781.419.7696  
www.essgroup.com



**INDEX OF DRAWINGS**

	COVER SHEET
NC-1	LOCATION PLAN NORTHERN CONVERTER STATION
NC-2	LOCATION PLAN NORTHERN CONVERTER STATION
NC-3	CONCEPTUAL PLAN NORTHERN CONVERTER STATION
NC-4	CONCEPTUAL PLAN NORTHERN CONVERTER STATION
SC-1	LOCATION PLAN SOUTHERN CONVERTER STATION
SC-2	CONCEPTUAL PLAN SOUTHERN CONVERTER STATION



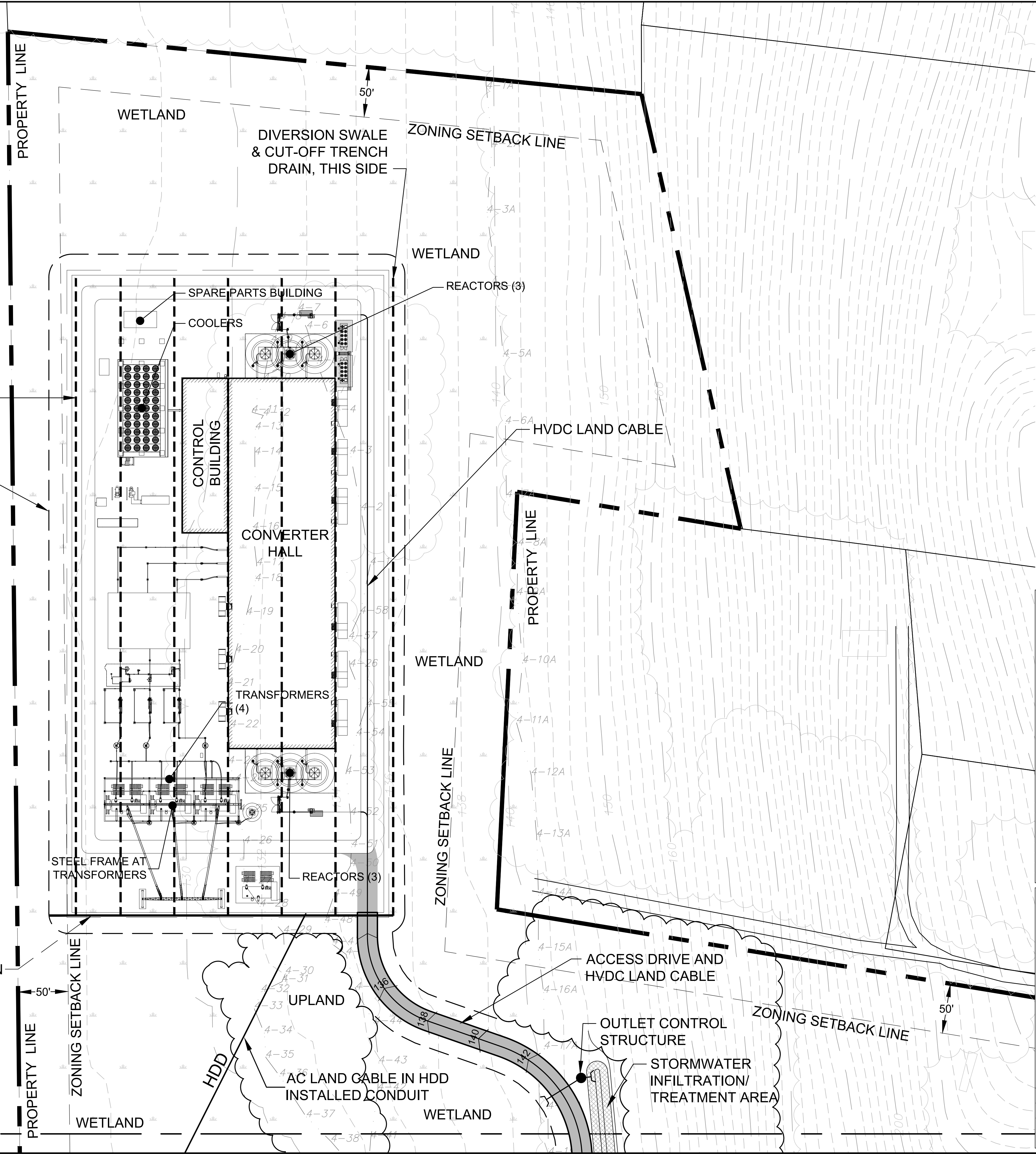




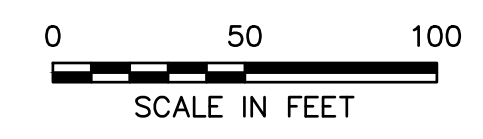
PERFORATED HDPE UNDERDRAIN, TYP. OF 7  
LIMIT OF WORK

PRELIMINARY STRUCTURE DIMENSIONS (APPROXIMATE)			
Structure	Length (FT)	Width (FT)	Height (FT)
<b>Equipment</b>			
Transformer	41	30	34
Reactor	15	15	25
Fence	-	-	8
Steel Frame at Transformer	190	-	60
Lightning Mast	-	-	80
Coolers	100	50	30
<b>Buildings</b>			
Converter Hall	360	110	49
Control Building	162	51	20
Spare Parts Building	50	20	15

AREA WITHIN LIMITS OF WORK	
Converter Station	5.72 ac.
Access Road - Northern Alternative	2.52 ac.
Access Road - Southern Alternative	2.18 ac.



**NOTES:**  
The Horizontal Datum for both converter stations were converted to State Plane, NAD83 Feet, New York East.  
**NORTHERN CONVERTER STATION**  
Original Horizontal Datum: Universal Transverse Mercator (UTM) Zone 18, NAD27 Meters.  
U.S. Geological Survey, 1992.  
Digital Elevation Models (DEM) - New York State.  
7.5-minute DEM (10-m by 10-m data spacing, elevations in decimeters).  
**SOUTHERN CONVERTER STATION**  
Original Vertical Datum: NAVD83  
Horizontal Datum: State Plane, NAD83 Feet, New York East.  
2-Foot Topographic Data is derived from the Spring 2004 photogrammetric base map of Westchester County.  
Data depicts contour lines for every 2-foot change in elevation. Data meets National Map Accuracy Standards at 1"=100'.



ess group  
environmental consulting & engineering services

100 Fifth Avenue, 5th Floor  
Waltham, Massachusetts 02451  
p 781.419.7696  
www.essgroup.com

No. REVISION	DATE	APP BY
DRAWN BY: KCW	CHECKED BY:	
DESIGNED BY:	APPROVED BY:	

**West Point Transmission Project**  
Athens to Buchanan, NY

**Conceptual Plan**  
Northern Converter Station  
Athens, NY

PROJECT No.: W296-002	DRAWING No.
DATE OF ISSUE: August 6, 2014	<b>NC-3</b>
SHEET No.:	SCALE: 1"=50'

PRO

WETLAND

WETLAND

STORMWATER INFILTRATION/TREATMENT AREA

AC LAND CABLE IN HDD INSTALLED CONDUIT

ZONING SETBACK LINE

50'

DMH

PROPERTY LINE

ACCESS DRIVE AND HVDC LAND CABLE ALTERNATIVES

WETLAND

DROP INLET

FLATS ROAD EXT.

HDD

ZONING SETBACK LINE

50'

LIMIT OF WORK

WETLAND

ZONING SETBACK LINE

75'

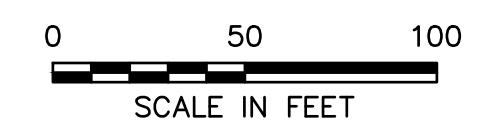
PROPERTY LINE

PROPERTY LINE

AC LAND CABLE IN HDD INSTALLED CONDUIT

WETLAND

**NOTES:**  
 The Horizontal Datum for both converter stations were converted to State Plane, NAD83 Feet, New York East.  
**NORTHERN CONVERTER STATION**  
 Original Horizontal Datum: Universal Transverse Mercator (UTM) Zone 18, NAD27 Meters.  
 U.S. Geological Survey, 1992.  
 Digital Elevation Models (DEM) - New York State.  
 7.5-minute DEM (10-m by 10-m data spacing, elevations in decimeters).  
**SOUTHERN CONVERTER STATION**  
 Original Vertical Datum: NAVD88  
 Horizontal Datum: State Plane, NAD83 Feet, New York East.  
 2-Foot Topographic Data is derived from the Spring 2004 photogrammetric base map of Westchester County.  
 Data depicts contour lines for every 2-foot change in elevation. Data meets National Map Accuracy Standards at 1"=100'.



**ess group**  
 environmental consulting & engineering services

100 Fifth Avenue, 5th Floor  
 Waltham, Massachusetts 02451  
 p 781.419.7696  
 www.essgroup.com

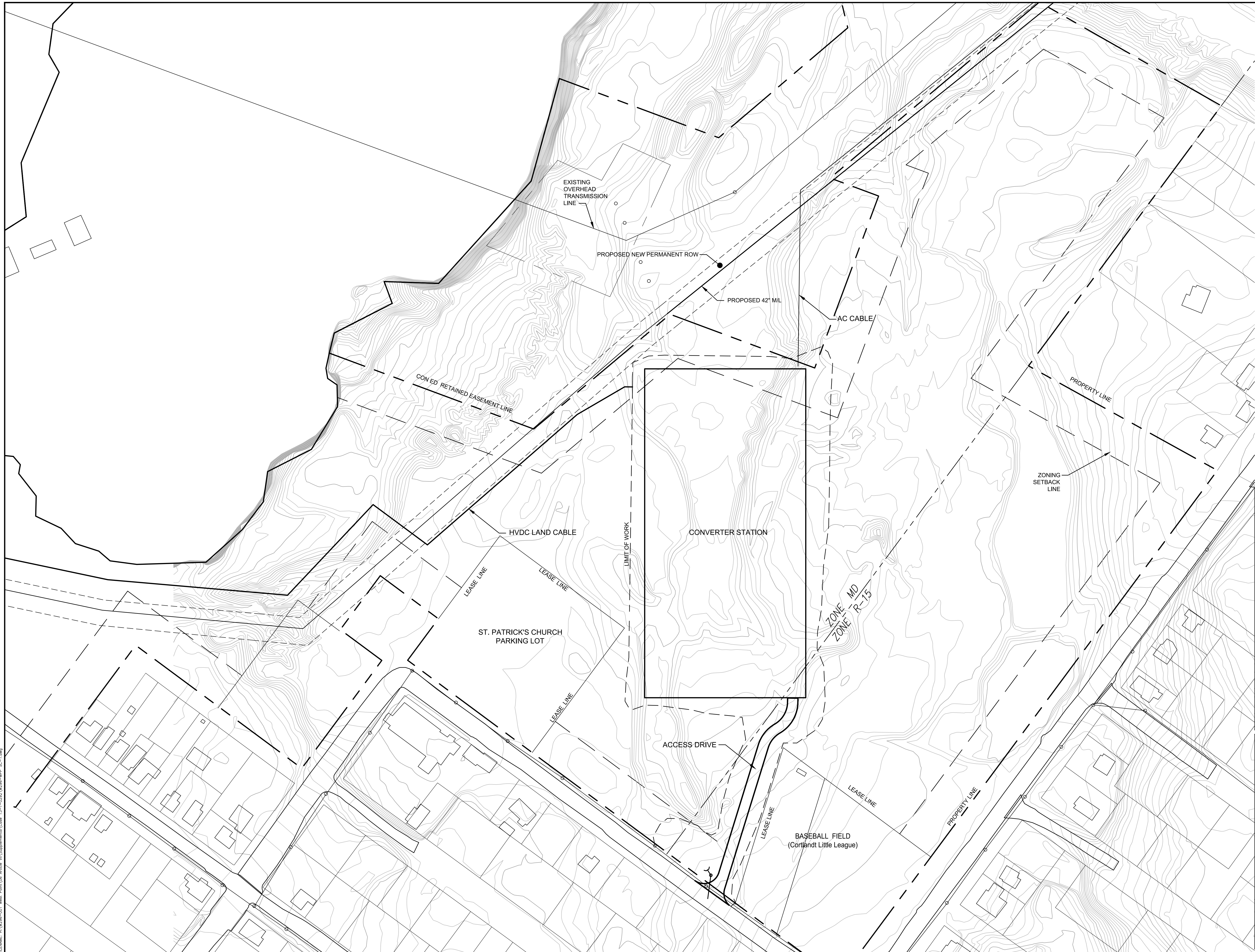
No.	REVISION	DATE	APP BY
DRAWN BY:	KCW	CHECKED BY:	
DESIGNED BY:		APPROVED BY:	

**West Point Transmission Project  
 Athens to Buchanan, NY**

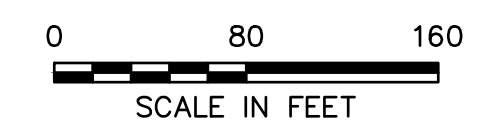
**Conceptual Plan  
 Northern Converter Station  
 Athens, NY**

PROJECT No.: W296-002	DRAWING No.
DATE OF ISSUE: August 6, 2014	<b>NC-4</b>
SHEET No.:	
SCALE: 1"=50'	

DATE: Aug 06, 2014 11:24AM  
 C:\Users\krcw\Documents\Projects\W296-002\W296-002-01\W296-002-01-01\W296-002-01-01-01.dwg  
 Copyright © ESS Group, Inc. 2013



**NOTES:**  
 The Horizontal Datum for both converter stations were converted to State Plane, NAD83 Feet, New York East.  
**NORTHERN CONVERTER STATION**  
 Original Horizontal Datum: Universal Transverse Mercator (UTM) Zone 18, NAD27 Meters.  
 U.S. Geological Survey, 1992.  
 Digital Elevation Models (DEM) - New York State.  
 7.5-minute DEM (10-m by 10-m data spacing, elevations in decimeters).  
**SOUTHERN CONVERTER STATION**  
 Original Vertical Datum: NAVD88  
 Horizontal Datum: State Plane, NAD83 Feet, New York East.  
 2-Foot Topographic Data is derived from the Spring 2004 photogrammetric base map of Westchester County.  
 Data depicts contour lines for every 2-foot change in elevation. Data meets National Map Accuracy Standards at 1"=100'.



**ess group**  
 environmental consulting & engineering services

100 Fifth Avenue, 5th Floor  
 Waltham, Massachusetts 02451  
 p 781.419.7696  
 www.essgroup.com

No.	REVISION	DATE	APP BY

DRAWN BY: KCW      CHECKED BY: PRW  
 DESIGNED BY:      APPROVED BY: PRW

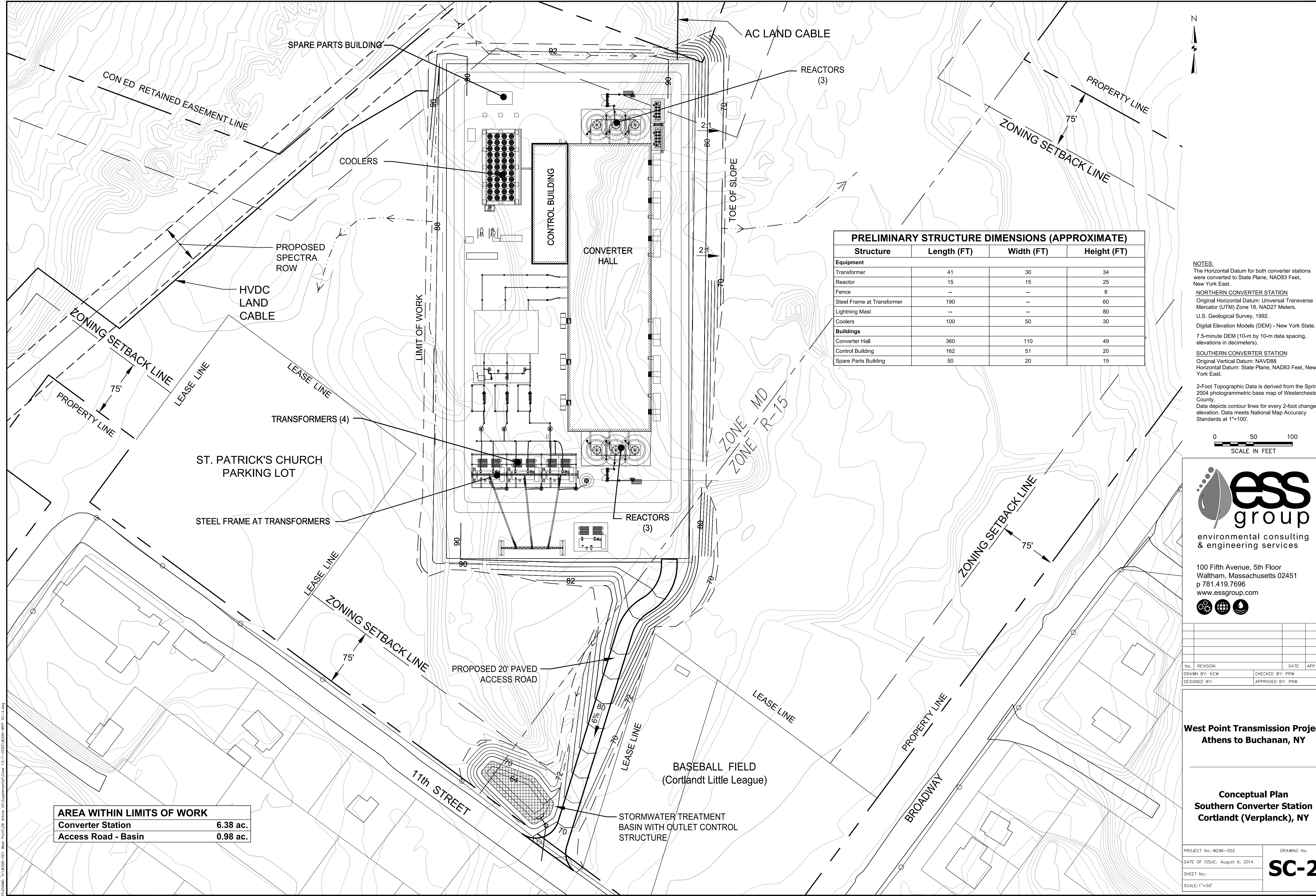
**West Point Transmission Project  
 Athens to Buchanan, NY**

**Location Plan  
 Southern Converter Station  
 Cortlandt (Verplanck), NY**

PROJECT No.: W296-002      DRAWING No.  
 DATE OF ISSUE: August 6, 2014  
 SHEET No.: **SC-1**  
 SCALE: 1"=80'

DATE: Aug 06, 2014 10:07AM Location: W:\Projects\2014\14-0002\W296-002\SC-1.dwg  
 DRAWN BY: KCW      CHECKED BY: PRW      DESIGNED BY:      APPROVED BY: PRW  
 Copyright © ESS Group, Inc. 2014

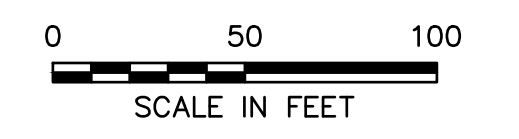




**PRELIMINARY STRUCTURE DIMENSIONS (APPROXIMATE)**

Structure	Length (FT)	Width (FT)	Height (FT)
<b>Equipment</b>			
Transformer	41	30	34
Reactor	15	15	25
Fence	--	--	8
Steel Frame at Transformer	190	--	60
Lightning Mast	--	--	80
Coolers	100	50	30
<b>Buildings</b>			
Converter Hall	360	110	49
Control Building	162	51	20
Spare Parts Building	50	20	15

**NOTES:**  
 The Horizontal Datum for both converter stations were converted to State Plane, NAD83 Feet, New York East.  
**NORTHERN CONVERTER STATION**  
 Original Horizontal Datum: Universal Transverse Mercator (UTM) Zone 18, NAD27 Meters.  
 U.S. Geological Survey, 1992.  
 Digital Elevation Models (DEM) - New York State.  
 7.5-minute DEM (10-m by 10-m data spacing, elevations in decimeters).  
**SOUTHERN CONVERTER STATION**  
 Original Vertical Datum: NAVD88  
 Horizontal Datum: State Plane, NAD83 Feet, New York East.  
 2-Foot Topographic Data is derived from the Spring 2004 photogrammetric base map of Westchester County.  
 Data depicts contour lines for every 2-foot change in elevation. Data meets National Map Accuracy Standards at 1"=100'.



**ess group**  
 environmental consulting & engineering services

100 Fifth Avenue, 5th Floor  
 Waltham, Massachusetts 02451  
 p 781.419.7696  
 www.essgroup.com

No.	REVISION	DATE	APP BY

DRAWN BY: KCW      CHECKED BY: PRW  
 DESIGNED BY:      APPROVED BY: PRW

**West Point Transmission Project  
 Athens to Buchanan, NY**

**Conceptual Plan  
 Southern Converter Station  
 Cortlandt (Verplanck), NY**

PROJECT No.: W296-002	DRAWING No.
DATE OF ISSUE: August 6, 2014	<b>SC-2</b>
SHEET No.:	SCALE: 1"=50'

**AREA WITHIN LIMITS OF WORK**

Converter Station	6.38 ac.
Access Road - Basin	0.98 ac.

DATE: Aug 06, 2014 11:07AM  
 C:\Users\kch\OneDrive\Documents\11-1-2014\W296-002\SC-2.dwg  
 Copyright © ESS Group, Inc. 2013