

PUBLIC INVOLVEMENT PROGRAM PLAN

Deer River Wind Farm Project Lewis and Jefferson Counties, New York

Prepared for:

Atlantic Wind, LLC
2 Radnor Corp. Ctr., Ste. 200
100 Matsonford Road
Radnor, PA 19087
Contact: Jenny L. Briot
Phone: (315) 399-0486
DeerRiverWind@avangrid.com

Prepared by:

James A. Muscato II, Esq.
Laura K. Bomyea, Esq.
Young / Sommer LLC
5 Palisades Drive
Albany, NY 12205

(518) 438-9907

May 6, 2016

Table of Contents

TERM IDENTIFIERS.....	4
1.0 INTRODUCTION.....	5
2.0 PROJECT DESCRIPTION.....	5
2.1 COMPANY PROFILE.....	5
2.2 PROJECT SUMMARY.....	6
2.3 STUDY AREA.....	7
3.0 IDENTIFICATION OF STAKEHOLDERS.....	7
3.1 AFFECTED STATE AND FEDERAL AGENCIES.....	8
3.2 LOCAL AGENCIES.....	9
3.3 MUNICIPALITIES AND SCHOOL DISTRICTS IN PROJECT AREA.....	9
3.4 MUNICIPALITIES AND SCHOOL DISTRICTS IN STUDY AREA.....	10
3.5 ADDITIONAL STAKEHOLDERS.....	10
3.6 HOST AND ADJACENT LANDOWNERS.....	10
3.7 PUBLIC INTEREST GROUPS.....	11
3.8 ENVIRONMENTAL JUSTICE COMMUNITIES.....	11
4.0 LANGUAGE ACCESS.....	11
5.0 PROPOSED PUBLIC INVOLVEMENT PROGRAM.....	12
5.1 CONSULTATION WITH THE AFFECTED AGENCIES AND STAKEHOLDERS.....	14
5.2 PRE-APPLICATION ACTIVITIES TO ENCOURAGE STAKEHOLDER PARTICIPATION.....	15
5.3 ACTIVITIES TO EDUCATE THE PUBLIC ON THE PROPOSAL, PROCESS, AND FUNDING.....	15
5.3.1 Public Meetings.....	16
5.3.2 Educational Materials.....	16
5.4 WEBSITE.....	16
5.5 NOTIFICATIONS.....	17
5.6 ACTIVITIES TO ENCOURAGE PARTICIPATION IN THE CERTIFICATION PROCESS.....	17
6.0 REQUIRED AIRPORT/HELIPORT PRE-APPLICATION CONSULTATION.....	18

LIST OF TABLES

Table 1. Most Prevalent Non-English Languages Spoken in Study Area Zip Codes.....12

LIST OF FIGURES

Figure 1. Project Area

Figure 2. Study Area

LIST OF EXHIBITS

Exhibit A. Master List of Stakeholders/Notification List

Exhibit B. Goals and Objectives for Stakeholder Involvement

Exhibit C. Example PIP Tracking Log

TERM IDENTIFIERS

Project Area - includes all generating facility components, interconnections and related facilities

Study Area - as defined by 16 NYCRR 1000.2(ar), is the five mile radius around all generating facility components, interconnections and related facilities (the 5 mile radius around the Project Area)

Stakeholders – as defined by 16 NYCRR 1000.2(an), are those persons who may be affected or concerned by any issues within the Board’s jurisdiction relating to the proposed major electric generating facility and any decision being made by it

New York State Board on Electric Generation Siting and the Environment (“Siting Board”)

New York State Public Service Law (“PSL”)

Public Involvement Program (“PIP”) plan

Atlantic Wind LLC (“Atlantic Wind” or “Applicant”)

Avangrid Renewables, LLC (“AR”)

Wind Turbine Generators (“WTGs”)

1.0 INTRODUCTION

Atlantic Wind LLC (“the Applicant”), a wholly-owned subsidiary of Avangrid Renewables, LLC (“AR”), is proposing to submit an Application to construct a major electric generating facility under Article 10 of the Public Service Law (“PSL”). Pursuant to the rules of the New York State Board on Electric Generation Siting and the Environment (“Siting Board”), applicants proposing to submit an application to construct a major electric generating facility under Article 10 must submit a Public Involvement Program plan (“PIP” or “Plan”). Under 16 NYCRR § 1000.4, the PIP must be submitted to the Department of Public Service (“DPS”) for review at least 150 days prior to filing a Preliminary Scoping Statement (PSS). This document is intended to be the PIP for the Deer River Wind Farm Project (“DRWFP” or “the Project”). The Project is intended to be an approximately 100 megawatt (MW) wind powered electric generating facility proposed by the Applicant to be located in the Towns of Pinckney, Harrisburg, and Montague, in Lewis County, New York (**Figure 1**). The proposed electrical interconnection location may be located in the adjacent Town of Rodman, Jefferson County. As required under 16 NYCRR § 1000.4, the Applicant’s PIP plan includes the following components:

- (1) consultation with the affected agencies and other stakeholders;
- (2) pre-application activities to encourage stakeholders to participate at the earliest opportunity;
- (3) activities designed to educate the public as to the specific proposal and the Article 10 review process, including the availability of funding for municipal and local parties;
- (4) the establishment of a website to disseminate information to the public and updates regarding the Project and the Article 10 process;
- (5) notifications to affected agencies and other stakeholders; and
- (6) activities designed to encourage participation by stakeholders in the certification and compliance process.

2.0 PROJECT DESCRIPTION

2.1 COMPANY PROFILE

The Applicant, Atlantic Wind LLC, is a wholly-owned subsidiary of Avangrid Renewables LLC (“AR”). AR is one of the largest producers of wind energy in the USA. AR is headquartered in Portland, Oregon, and has more than \$10 billion of operating assets totaling more than 6,000 megawatt (“MW”) of owned and controlled wind and solar generation in the United States. AR has developed over 50 wind farms in the United States alone including those in New York: Maple Ridge and Hardscrabble. Maple Ridge produces enough electricity to power up to 160,000 average New York homes. Hardscrabble features 37 American-made Gamesa wind turbines which produce enough electricity to power over 25,000 typical New York homes each year.

2.2 PROJECT SUMMARY

The Deer River Wind Farm Project is a proposed 100 MW project located within the Towns of Pinckney, Harrisburg, and Montague, in Lewis County, New York. The proposed transmission interconnect location crosses into the Town of Rodman in Jefferson County. Since Article 10 defines a wind “Project Area” to include the transmission interconnection point, Rodman is within the Project Area, although no wind turbines are currently proposed in that municipality. The proposed Project Area is depicted in **Figure 1**. The Study Area also includes the Towns of Denmark, Lowville, Martinsburg in Lewis County; and the Towns of Champion, Lorraine, Redfield, Rutland, Watertown and Worth in Jefferson County; and the Town of Redfield in Oswego County. The proposed Study Area is depicted in **Figure 2**.

The Project will be located on leased private land and easements that are rural in nature. The actual footprint of the proposed facilities will be located within the leased land, and will enable farmers and landowners to continue with farming operations or other land uses. The proposed Project consists of the construction and operation of a commercial-scale wind power project, including the installation and operation of up to 40 wind turbines, together with the associated collection lines (below grade and overhead), access roads, meteorological towers, and operation and maintenance (O&M) building. To deliver electricity to the New York State power grid, the Applicant proposes to construct a collection substation adjacent to a National Grid interconnection switching station which will interconnect with National Grid’s Lighthouse Hill to Black River 115 kV transmission line. It is anticipated that a 34.5 kV collection line will extend approximately 6 miles from the collection substation to the generation site. The Deer River Wind Farm Project will have a nameplate capacity of 100 MW, and is expected to operate at an annual net capacity factor (NCF) of approximately 32%. This means that over the course of a full calendar year the Project would produce up to 280,000 megawatt hours (MWh) of energy (i.e., 100 MW x 24 hrs/day x 365 days x 32%). This will be enough electricity to meet the average annual consumption of approximately 25,000 households, based on an average annual electricity consumption for a U.S. residential utility customer of 10.932 megawatt hours (MWh), in 2014, and approximately 39,000 New York households, based on the average New Yorker’s annual electricity consumption.¹

The proposed Project will have positive impacts on socioeconomics in the area through employment opportunities, specifically by generating temporary construction employment, the majority of which will likely be drawn from the Jefferson/Lewis County labor market. Local construction employment will primarily benefit those in the construction trades, including equipment operators, truck drivers, laborers, electricians, carpenters and ironworkers. In addition, the Project operation will generate full-time jobs, including a Plant Manager, Wind Technicians, and Project Administrator. The Project will also result in increased revenues to County and local municipality tax bases, payments to the local hospitality industry, purchase of local supplies and goods, and lease revenues to participating landowners.

¹ Energy Information Administration (EIA) *Frequently Asked Questions: How Much Electricity Does an American Home Use?* Available at: <http://www.eia.gov/tools/faqs/faq.cfm?id=97&t=3> (last updated October 21, 2015; Accessed April 18, 2016).

2.3 STUDY AREA

In 16 NYCRR § 1000.2(ar), the Study Area to be used for analysis of major electric generating facilities is defined as “an area generally related to the nature of the technology and the setting of the proposed site. For large facilities or wind power facilities with components spread across a rural landscape, the Study Area shall generally include the area within a radius of at least five miles from all generating facility components, interconnections and related facilities and alternative location sites.” The proposed Study Area for the Project is depicted on **Figure 2**.

The PSS and the Application will further define the Study Area and will discuss Project alternatives. For purposes of the PIP, the Project Area has been defined broadly to include proposed land for the Project components included in the Project. As the Article 10 process develops, specific Project component locations will be identified, in compliance with the siting criteria referenced herein, and discussed with the public, stakeholders and the affected agencies through the PIP plan provided herein. It is presumed that any potential alternative component locations would be located within the communities identified herein.

With respect to initially identifying the Project Area, it should be noted that the selection of appropriate sites for a wind-powered electric generation facility is constrained by numerous factors that are essential considerations for a given project to operate in a technically and economically viable manner. Availability/quality of wind resource and proximity to the bulk power transmission system are the initial screening criteria evaluated in the site selection process for any wind power project. The Applicant’s initial evaluation was based on publicly available data, such as the *Wind Resource of New York, Mean Annual Wind Speed at 100 Meters* map prepared by AWS Truewind, along with site visits and capacity analysis for nearby transmission lines. Initial review of this wind resource map indicated the potential for a suitable wind resource in Lewis County, and adequate access to the bulk power transmission system. Other important factors that increased the potential to develop a wind power project in the Project Area include willing land lease participants and host communities, and preliminary environmental assessments that have not indicated any significant wildlife or unique natural habitat concerns.

3.0 IDENTIFICATION OF STAKEHOLDERS

The fundamental first step in designing a Public Involvement Program is determining who may be affected by the proposed Project. The Applicant identified affected agencies and municipalities, utilities, host landowners, and other actual stakeholders based on utilizing DPS guidance; prior submissions of other Article 10 PIP plans; review of County GIS records, tax records, and personal visits; consultation with DPS general counsel and special environmental/regulatory counsel; and conducting internet research. Additionally, the Applicant considered the following in compiling its list of actual affected agencies and other actual stakeholders:

- The proposed locations of Project components within the Project Area;
- Study Area;
- The point of interconnection;

- Sign-in sheets from previously held public meetings and outreach efforts;
- “Local Party,” as defined under 16 NYCRR §1000.2(s);
- “Affected Agencies,” as that term is used in 16 NYCRR § 1000 et seq;
- Public interest groups;
- Host landowners who have a land agreement with Atlantic Wind LLC;
- Adjacent landowners with property abutting parcels where Project components (e.g., collection lines, substation, met tower, O&M facility, etc.) are proposed, and any additional landowners within 500 feet of a turbine; and
- State and federal elected officials representing the Host and Adjacent Municipalities.

A master list of stakeholders, which includes all known, potentially interested parties, was developed based upon the combination of efforts described above (see **Exhibit A**). Sections 3.1 through 3.8 below, identify stakeholders by category. The Applicant anticipates that the List of Stakeholders will be updated as necessary based on information received during PIP activities and these updates will be provided to DPS along with the PIP tracking submissions.

3.1 AFFECTED STATE AND FEDERAL AGENCIES

NYS Department of Agriculture and Markets

NYS Attorney General

New York State Research and Development Authority (NYSERDA)

NYS Department of Environmental Conservation

NYS Office of General Services

NYS Governor's Office

NYS Department of Health

NYS Division of Homeland Security and Emergency Services

NYS Office of Parks, Recreation and Historic Preservation

NYS Department of Public Service

NYS Department of State

NYS Department of Transportation

New York Independent System Operator

Empire State Development Corporation

State Senator Joseph A. Griffo, 47th Senate District (Pinckney, Harrisburg, Montague, Denmark, Lowville, and Martinsburg)

State Senator Patty Ritchie, 48th Senate District (Rodman, Champion, Lorraine, Redfield, Rutland, Watertown, and Worth)

State Assemblyman Ken Blankenbush, Assembly District 117 (Pinckney, Harrisburg, Montague, Rodman, Denmark, Lowville, Martinsburg, Champion, Lorraine, Rutland, Watertown and Worth)

State Assemblyman William A. Barclay, Assembly District 120 (Redfield)

US Senator Charles E. Schumer

US Senator Kirsten E. Gillibrand

US Representative Elise Stefanik, District 21 (Pinckney, Harrisburg, Montague, Rodman, Denmark, Lowville, Martinsburg, Champion, Lorraine, Rutland, Watertown and Worth)
US Representative Richard Hanna, District 22 (Redfield)
US Army Corps of Engineers
US Fish and Wildlife Service
US Federal Aviation Administration
US Department of Defense
National Telecommunications and Information Administration

3.2 LOCAL AGENCIES

Lewis County Chamber of Commerce
South Jefferson Chamber of Commerce
NYS Tug Hill Commission
Cornell Cooperative Extension
Development Authority of the North Country
Lewis County Fire & Emergency Management
Lewis County Highway Department
Jefferson County Fire & Emergency Management
Jefferson County Highway Department
Town of Pinckney Highway Department
Town of Montague Highway Department
Town of Harrisburg Highway Department
Town of Rodman Highway Department
Copenhagen Volunteer Fire Department
Rodman Fire Department
Lorraine Volunteer Fire Department
Town of Watertown Fire Department
Castorland Fire Company
Lowville Fire Department
Redfield Fire Department
Martinsburg Fire Department

3.3 MUNICIPALITIES AND SCHOOL DISTRICTS IN PROJECT AREA

Lewis County
Jefferson County
Town of Pinckney, Lewis County
Town of Montague, Lewis County

Town of Harrisburg, Lewis County
Town of Rodman, Jefferson County
Copenhagen School District
Lowville Academy and Central School District
South Jefferson Central School District

3.4 MUNICIPALITIES AND SCHOOL DISTRICTS IN STUDY AREA

Town of Denmark, Lewis County
Town of Lowville, Lewis County
Town of Martinsburg, Lewis County
Town of Champion, Jefferson County
Town of Rutland, Jefferson County
Town of Watertown, Jefferson County
Town of Worth, Jefferson County
Town of Lorraine, Jefferson County
Town of Redfield, Oswego County
Village of Copenhagen, Lewis County
Carthage Central School District
Watertown City School District
Sandy Creek Central School District

3.5 ADDITIONAL STAKEHOLDERS

Watertown International Airport
Richland Airpark Inc.
Duflo Airport
Tug Hill Farm Airport
Guilfoyle Ambulance Services
National Grid
AT&T
Verizon

3.6 HOST AND ADJACENT LANDOWNERS

Host landowners are landowners with whom the Applicant has entered into a lease or easement agreement. Adjacent landowners are landowners with property abutting parcels where Project components (e.g., collection lines, substation, met tower, O&M facility, etc.) are proposed, and any additional landowners within 500 feet of a turbine. The identities of potential host and adjacent landowners are determined from County GIS records, tax records, and personal visits by representatives of the Applicant. The final layout will be determined by incorporating further input from stakeholders, as well as processing data from fieldwork (e.g., avoidance of impacts to wetlands identified during field

delineation efforts). Therefore, specific host and adjacent Landowner information is not included with this PIP. This information will be submitted with the PSS, as required by 16 NYCRR § 1000.5.

3.7 PUBLIC INTEREST GROUPS

Nature Conservancy
Northern New York Audubon Society
NY Public Interest Research Group

3.8 ENVIRONMENTAL JUSTICE COMMUNITIES

The Deer River Wind Farm Project will be subject to the rules contained in 6 NYCRR Part 487 promulgated by the NYSDEC for the analysis of environmental justice issues associated with projects subject to review and approval under Article 10 of the New York Public Service Law. Per NYSDEC Environmental Justice Policy CP-29, Potential Environmental Justice Areas include census block groups featuring populations that meet or exceed at least one of the following statistical thresholds:

1. At least 51.1% of the population in an urban area reported themselves to be members of minority groups; or
2. At least 33.8% of the population in a rural area reported themselves to be members of minority groups; or
3. At least 23.59% of the population in an urban or rural area had household incomes below the federal poverty level

Based on data obtained from the NYSDEC's Geospatial Information System (GIS) Tools for Environmental Justice (www.dec.ny.gov/public/911.html), Atlantic Wind has determined that there are no Potential EJ Areas near the Project Area or within the Study Area. The closest Potential EJ Area is located in the Village of Lowville, portions of the Town of Martinsburg and the City of Watertown, which are located outside the Study Area.

4.0 LANGUAGE ACCESS

In 16 NYCRR § 1000.4(d), Article 10 regulations require the PIP to identify (1) any language other than English spoken according to United States Census data by 5,000 or more persons residing in any 5-digit zip code postal zone in which any portion of such zone is located within the Study Area for the facility; and (2) any language other than English spoken by a significant population of persons residing in close proximity to the proposed facility, alternative locations, or interconnections.

The Study Area for the Project includes portions of Lewis, Jefferson and Oswego Counties; Lewis County is a host municipality, while Jefferson and Oswego Counties are adjacent municipalities. According to the US Census Bureau data from 2006-2010, 3.01% of Lewis County residents age 5 or older speak a language other than English at home. With a 2014 population estimate of 27,220 persons in Lewis County, this means approximately 819 people in the County speak a language other than English at home. In Jefferson County, 7.83% of residents age 5 or older (approximately 8,326 persons) speak a language other than English at home. In Oswego County, 4.62% of the 109,860 residents age 5 or older (approximately 5,319 persons) speak a language other than English at home.

The Study Area contains portions of twenty-two (22) 5-digit zip codes. Table 1 summarizes the most prevalent non-English languages spoken in each of these zip codes.

Table 1. Most Prevalent Non-English Languages Spoken in Study Area Zip Codes

Zip Code	Language	Number of Speakers
13309	Spanish or Spanish Creole	212
13316	Spanish or Spanish Creole	195
13325	Chinese	5
13327	Spanish or Spanish Creole	46
13343	French (incl. Patois, Cajun)	6
13365	Italian	80
13367	Spanish or Spanish Creole	93
13437	Spanish or Spanish Creole	13
13601	Spanish or Spanish Creole	1,086
13619	Spanish or Spanish Creole	253
13620	Spanish or Spanish Creole	91
13626	Spanish or Spanish Creole	48
13659	German	10
13682	Spanish or Spanish Creole	17
13606	German	31
13612	Spanish or Spanish Creole	43
13637	Spanish or Spanish Creole	189
13602	Spanish or Spanish Creole	600
13603	Spanish or Spanish Creole	638
13616	Spanish or Spanish Creole	152
13634	French (incl. Patois, Cajun)	60
13685	Spanish or Spanish Creole	36

As shown above in Table 1, no language other than English is spoken by more than 5,000 people residing in any zip code within the Study Area. (Source: https://apps.mla.org/map_data, Census 2000).

5.0 PROPOSED PUBLIC INVOLVEMENT PROGRAM

According to 16 NYCRR § 1000.4(c), a Public Involvement Program must include: (1) consultation with the affected agencies and other stakeholders; (2) pre-application activities to encourage stakeholders to participate at the earliest opportunity; (3) activities designed to educate the public as to the specific proposal and the Article 10 review process, including the availability of funding for municipal and local parties; (4) the establishment of a website to disseminate information to the public; (5) notifications; and (6) activities designed to encourage participation by stakeholders in the certification and compliance process. It is anticipated that this will be an ongoing, evolving process throughout all phases of the Article 10 review process (pre-application phase, application phase, hearing and decision phase, and post-certification phase) intended to disseminate information regarding the Project to

stakeholders, solicit information from those stakeholders during public outreach events and generally foster participation in the Article 10 review.

The Applicant is in the process of establishing a user friendly website in plain English that describes the Project (<http://avangrid.us/deerriver/>). While still under initial development, this website will describe the Article 10 process and provide Project updates throughout the development and construction phases of the Project to keep the community informed of the Project's status (see Section 5.4 below for additional detail).

The following PIP elements will carry on through the duration of the Project:

- Project Representative (for the public and stakeholders to contact with questions, concerns, etc.):

Deer River Wind Farm Project
c/o Jenny Briot
2 Radnor Corp. Ctr., Ste 200
100 Matsonford Rd,
Radnor, PA 19087
DeerRiverWind@avangrid.com

- Local Project Contact Number: (315)399-0486

- Local Document Repositories:

LOWVILLE FREE LIBRARY
5387 Dayan Street
Lowville, NY 13367
Phone: 315-376-2131
Fax: 315-376-2131

RODMAN PUBLIC LIBRARY
12509 School Street PO Box B
Rodman NY 13682
Phone: 315-232-2522
Fax: 315-232-3853

ROSWELL P. FLOWER MEMORIAL LIBRARY
229 Washington St.
Watertown, NY 13601
Phone: 315-785-7705
Fax: 315-788-2584

WILLIAM H. BUSH MEMORIAL LIBRARY
5605 Whitaker Rd
Martinsburg, NY 13404
Phone: 315-376-7490
Fax: 315-376-3096

5.1 CONSULTATION WITH THE AFFECTED AGENCIES AND STAKEHOLDERS

Article 10 regulations require both general and specific consultations with affected agencies and municipalities. Affected agencies, listed above in Section 3.1 and 3.2, were identified through review of the Article 10 regulations in consultation with the Project's permitting counsel and environmental consultant. Affected municipalities are identified in Sections 3.3 and 3.4 above. Consultation with affected agencies and municipalities will include the following general steps:

1. The Applicant will make an initial contact with each agency or municipality to make certain they are aware of the Project and inform them of the Article 10 process, including steps for intervenor funding and provide information on who to contact with any questions or comments about the Project or about Article 10;
2. Subsequent interaction with the agency or municipality as needed to answer specific questions or concerns about the Project, and to identify the applicable studies and impact analyses to be performed and how they pertain to the Project; and
3. Other specific consultations as required by the Article 10 regulations.

The goals of the initial consultation with each municipality or agency will be to consult with representatives, disseminate information, request information, and schedule follow up meetings and/or consultations, as appropriate. Specific information provided to the affected agencies and municipalities will include description of the Project and location; explanation the phases of the Article 10 process and how the agency or municipality can participate in each step; description of the available intervenor funding and the process for obtaining funding; information about other planned consultations; sources of additional information about the Project and Article 10 (e.g., the Project and Siting Board websites), and agricultural land and operations impacts. Information to be requested from affected municipalities and agencies may vary by the involvement of each (e.g., whether it is a host or adjacent municipality) but could include topics such as payment in lieu of tax agreements, highway work agreements, local laws, emergency response organizations, environmental impact review, contact information for public interest groups, and determination of which news sources are used for official notices.

It should be noted that, in accordance with 16 NYCRR 1000.5(g), comments on the Preliminary Scoping Statement ("PSS") are due within 21 days after its filing with the Secretary. The Applicant intends to engage municipalities, agencies, and stakeholders throughout the PIP implementation process in order to identify their respective interests, and obtain information regarding particular resources, locations, concerns and recommendations of the affected communities, agencies and interests groups. Prior to filing the PSS, this will be accomplished through a variety of methods, including the various open house meetings, direct correspondence, review of any submitted comments on the website, and targeted meetings with some of the individual stakeholder entities identified herein. During these sessions, the

Applicant will provide stakeholders with the approximate schedule for PSS submission and highlight the 21-day public comment period.

Consultations will be deemed successful if (1) the appropriate information about the Project and Article 10 process was provided to agency or municipality representatives, (2) the relevant information requested was gathered to help advance the PIP process and preparation of the Application, and (3) follow up meetings or consultations were either scheduled or will be scheduled, as needed.

Exhibit B lists the affected agencies and municipalities, as identified at the time this PIP was prepared, the goals and objectives of each consultation, and the plan for achieving these goals. Please note that many of these consultations have already been initiated.

5.2 PRE-APPLICATION ACTIVITIES TO ENCOURAGE STAKEHOLDER PARTICIPATION

Through meetings with various Federal, State and local agencies, the Applicant has been engaging in some pre-application discussions with various stakeholders to provide information regarding early-stage development efforts, such as reaching out to potential landowners and determining potential locations for temporary meteorological test towers (“Met Towers”). Applicant has attended meetings with the Town of Pinckney Planning Board, including a public hearing, for approval of a temporary Met Tower, which included some initial discussion of the Project generally. In addition, the Applicant continues to communicate with local officials, and will participate in future town board meetings. Applicant plans to hold its first public information meeting in June 2016, with at least one future session prior to the submission of the PSS, tentatively planned for November 2016. Public engagement activities Applicant has conducted since late 2015 include:

- Meetings with Tug Hull Commission, DPS and DEC
- Initial Contact with Town Supervisors (Pinckney, Montague, Harrisburg)
- Working to secure a local office space for Project, which will be open to the public and staffed with company representatives to address questions. Office hours will be established and posted on Project website.

In addition to these engagement activities that have already taken place, the Applicant will continue pre-application activities to encourage stakeholder participation as set forth in the Agency/Municipality Consultations included in **Exhibit B** of this PIP. This table will be continuously updated as consultations and stakeholder participation activities take place, and additional means of engagement are identified (as necessary).

5.3 ACTIVITIES TO EDUCATE THE PUBLIC ON THE PROPOSAL, PROCESS, AND FUNDING

As noted above, Applicant has attended and will continue to attend Town meetings, is planning Applicant-sponsored public information sessions, will be distributing educational materials, and will provide a Project Website, which will offer information on the proposed Project, as well as links to and information on the Article 10 process, intervenor funding, and other important stakeholder issues. These efforts will allow Applicant to engage with all stakeholders regarding the proposed Project and will offer multiple avenues of information distribution, so that stakeholders and the public have

multiple, varied opportunities to obtain information on the Project and participate in the proceedings. These efforts are discussed in further detail below.

5.3.1 Public Meetings

The Applicant intends to hold two open house style public meetings prior to submittal of the PSS, anticipated to be in June and November 2016. Representatives from Atlantic Wind will be present to answer questions and provide preliminary information on the Project. There will be a short introduction from one of the Applicant's representatives, as well as one-on-one discussions with attendees around posters displaying Project information. It is anticipated that these meetings will be held at the Town of Harrisburg Town Hall or another municipal facility and/or a public space suitable for informational meetings. Applicant will engage with local stakeholders to determine an appropriate space for these sessions. All public meetings held by the Applicant will be properly noticed in local newspapers, including the *Watertown Daily Times, Journal and Republican*, as well as the Project website, at least 7 days prior to the scheduled event.

5.3.2 Educational Materials

The Applicant will develop educational materials to inform the public about wind-generated energy, the proposed Project, and the Article 10 process. These materials will include poster-sized maps and graphics to be displayed at public meetings. In addition, more portable materials (e.g., factsheets or brochures) will be distributed at public meetings, and via local libraries, host municipalities, adjacent municipalities, and mailings to stakeholders and additional addresses obtained through public meetings and the Project website, and materials will also be available on the Project website. These materials will allow the public to learn more about the Project, and will include links to the Siting Board and Project websites. If necessary, these materials will also be produced in non-English languages (see Section 4.0 above for additional information regarding Language Access).

5.4 WEBSITE

The Applicant is currently establishing a user friendly website in plain English that describes the project (<http://avangrid.us/deeriver/>). This website will provide information regarding the Article 10 process, and will continue to provide Project updates throughout the development and construction phases of the Project to keep the community informed of the Project's status. For example, additional maps will be added to the website as the Project layout evolves, and notices will be posted the website prior to various milestones and public meetings/outreach events.

As information becomes available, it will be added to the website. Such information would include:

- Project description;
- Project benefits and need;
- Summary of permitting requirements;
- Links to the Siting Board Article 10 Public Information Coordinator, the Siting Board home page, and case-specific documents;
- Information on the Article 10 process;

- Summary of the Intervenor Funding process and how to apply;
- Project layout figures and photo simulations/renderings;
- Project contact information, including email address and toll free telephone number;
- Copies of Article 10 and related licensing documents;
- A schedule that lists dates/times/locations for outreach events and key milestone dates, such as when the Application will be filed;
- Addresses of local document repositories; and
- Tracking Reports summarizing the Project’s PIP activities to date, including summaries of stakeholder interactions, comments, and questions.

As indicated above, the website includes Project contact information (email address and local telephone number). The Applicant intends to respond directly to all substantive inquiries and comments submitted to the Project contact, and will document all such correspondence. Email and postal addresses collected through the website will be added to the master stakeholder list.

5.5 NOTIFICATIONS

The Article 10 regulations establish the notification requirements for serving documents. Pursuant to § 1000.7, Applicant shall publish all required notices in the *Watertown Daily Times* (newspaper of largest circulation), and *Journal and Republican*.

No less than three days before filing of the Application the Applicant will publish a summary of the Application in the newspapers listed above; serve each member of the State Legislature in whose district any portion of the proposed facility is to be located; and shall provide written notice to those persons who have filed a statement with the secretary within the past twelve months that wish to receive all such notices. In addition, notifications will be posted on the Project website.

The Applicant will publish any other notices required by the Presiding Examiner or other sections of Article 10 in the manner proscribed by the Presiding Examiner or under the procedures contained in Article 10.

All public meetings held by the Applicant will be properly noticed in local newspapers, including the *Watertown Daily Times*, *Journal and Republican*, as well as the Project website, generally at least 7 days prior to the meetings.

5.6 ACTIVITIES TO ENCOURAGE PARTICIPATION IN THE CERTIFICATION PROCESS

Beyond the activities described above in Sections 5.1 through 5.5, the Applicant will identify additional, practical measures to encourage stakeholder participation during the certification process. It is anticipated that this will be an ongoing, evolving process throughout all phases of the Article 10 review process (pre-application phase, application phase, hearing and decision phase, and post-certification phase).

The Applicant will track its Public Involvement Program and provide regular updates to DPS Staff, Specifically, the Applicant will maintain a PIP Tracking Log that will provide specifics on all meetings,

including dates, locations, attendees, purpose, and follow-up action items. An example PIP Tracking Log is included as **Exhibit C** of this document.

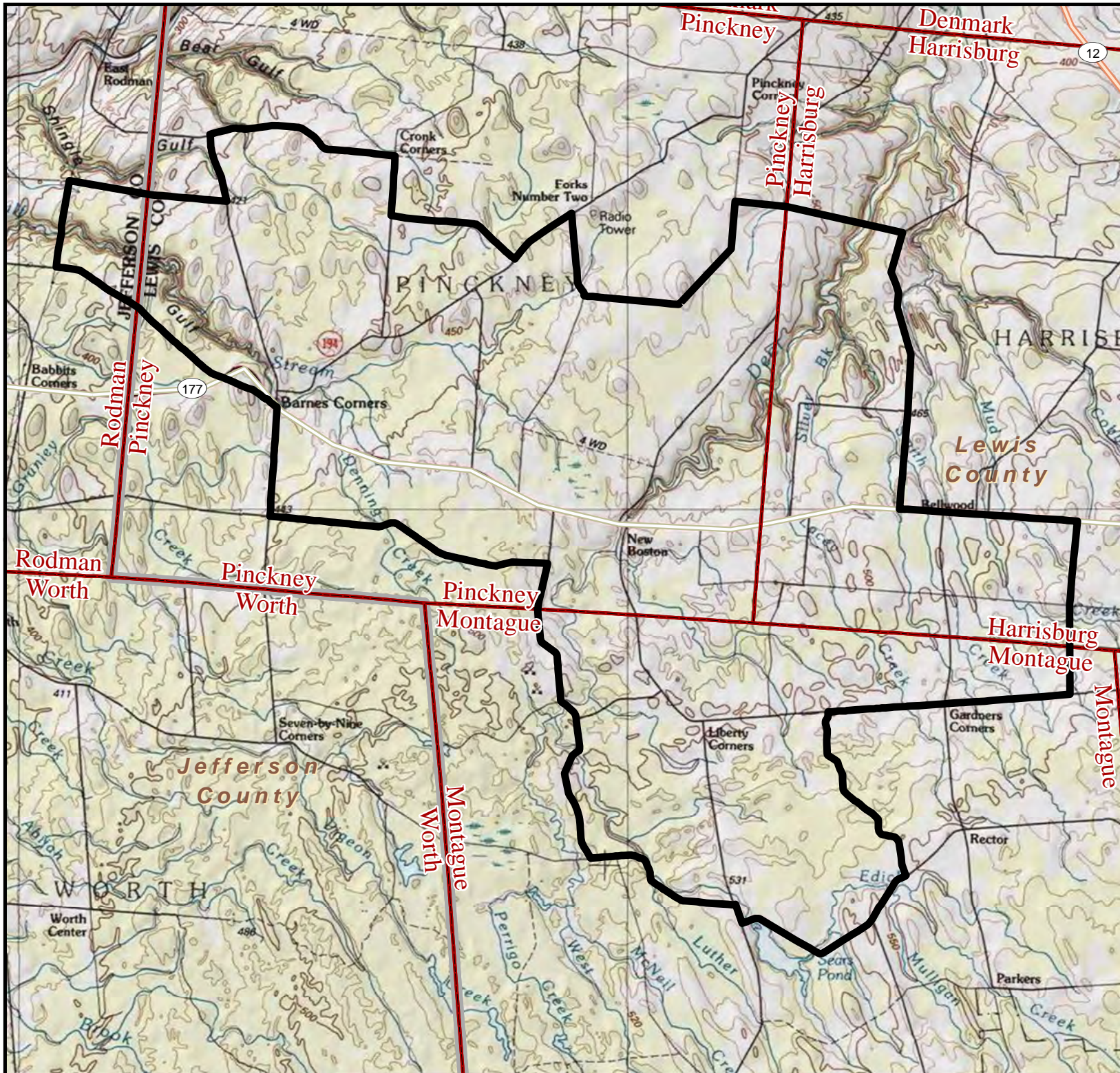
As previously stated, the Applicant intends to hold two open house style public meetings prior to submittal of the PSS, anticipated to be in June and November of 2016. In addition, the Project website will be updated continuously with Project developments, meetings, and announcements to keep stakeholders and the public informed.

6.0 REQUIRED AIRPORT/HELIPORT PRE-APPLICATION CONSULTATION

Pursuant to 16 NYCRR § 1001.25(e) & (f), the Applicant shall coordinate with the Federal Aviation Administration, the Department of Defense, and the National Telecommunications and Information Administration to confirm possible affected airports or heliports near the location of the Project, or potential hazards associated with radio signal interference and air traffic control. Each federal entity will be contacted via phone call and/or letter to identify the operators and/or appropriate contact person.

Once the proper operator/representative is determined, the outreach to the operator of the public airport or public heliport will include another phone call, a follow-up letter, and, if necessary, a meeting to provide Project-specific information. The Project-specific information to be provided will include: a detailed map showing the Study Area, Project Area, and location of Project components; coordinates and dimensions for each proposed turbine; a description of the Project construction and operational phases; and a request for review of and comment. In addition, outreach to the Department of Defense will include an initial screening with a follow-up review of the proposed Project, if required. The Applicant will also consult with privately owned and operated airports/heliports that may be affected by the Project.

Figure 1
Project Area
Deer River Wind Project



Legend




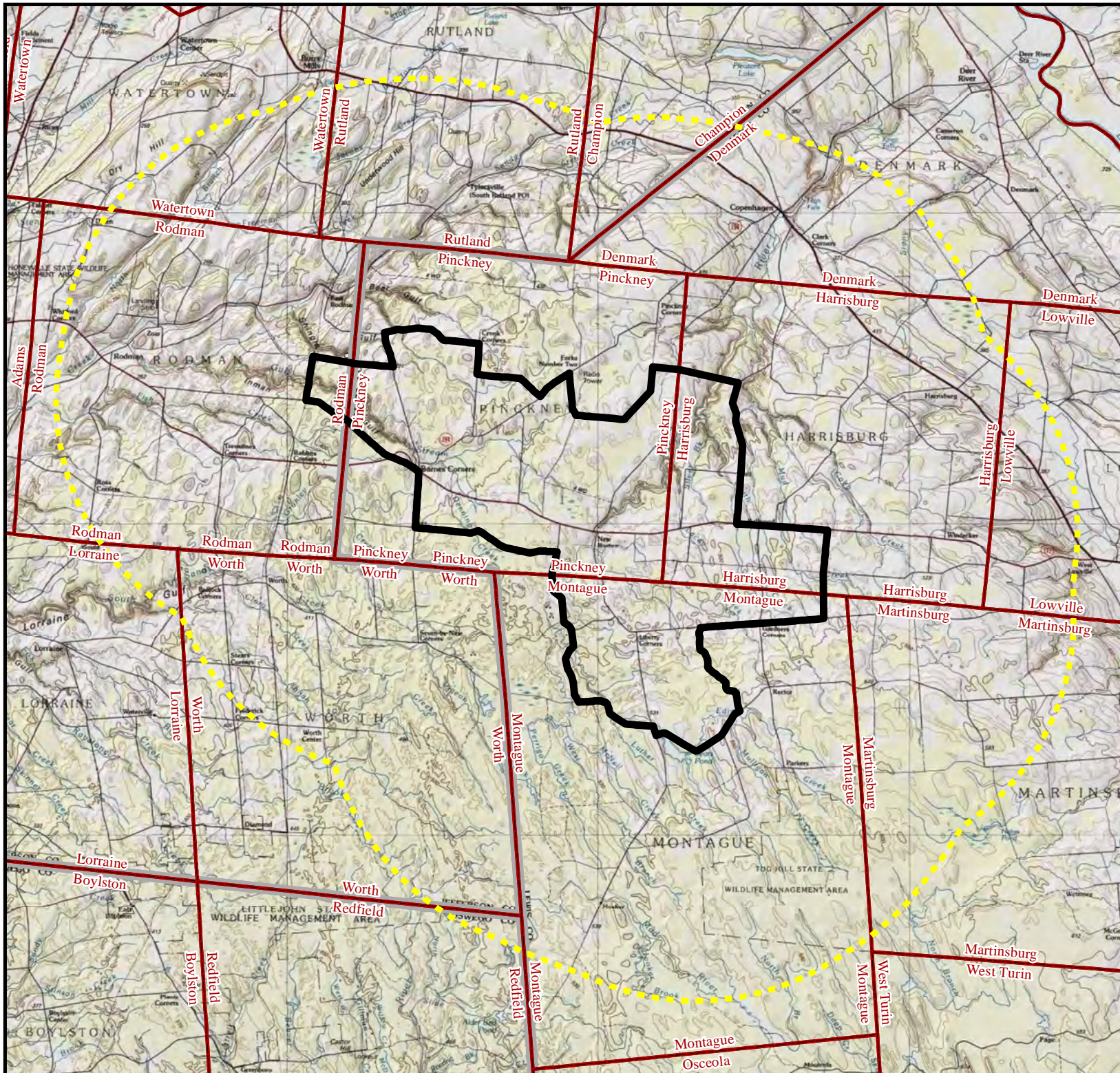
-  Project Area
-  City/Town
-  County



Figure 2
Study Area
Deer River Wind Project



Legend





-  Project Area
-  Study Area - 5 mile
-  City/Town
-  County



Exhibit A

Master List of Stakeholders and Notification List

AFFECTED STATE AND FEDERAL AGENCIES

NYS Department of Agriculture and Markets

Richard Ball, Commissioner
10B Airline Drive
Albany, NY 12235

NYS Attorney General

Eric T. Schneiderman
State Capital Building
Albany, NY 12224

New York State Research and Development Authority (NYSERDA)

17 Columbia Circle
Albany, NY 12203-6399

NYS Department of Environmental Conservation

625 Broadway
Albany, NY 12233

NYS Department of Environmental Conservation

Region 6 Headquarters
Judy Drabicki, Regional Director
317 Washington St.
Watertown, NY 13601

NYS Office of General Services

RoAnn Destito, Commissioner
41st Floor, Corning Tower
Empire State Plaza
Albany, NY 12242

NYS Governor's Office

Andrew M. Cuomo
NYS State Capitol Building
Albany, NY 12224

NYS Department of Health

Cesar Perales, Secretary of State
One Commerce Plaza
99 Washington Avenue
Albany, NY 12231

NYS Division of Homeland Security and Emergency Services

Jerome Hauer, Commissioner
1220 Washington Avenue
State Office Campus
Building 7A, Suite 710
Albany, NY 12242

NYS Office of Parks, Recreation and Historic Preservation

Ruth Pierpont, Deputy Commissioner
New York State Division for Historic Preservation
Peebles Island State Park
P.O. Box 189
Waterford, NY 12188-0189

NYS Department of Public Service

Audrey Zibelman, Chair
Empire State Plaza
Agency Building 3
Albany, NY 12223

NYS Department of State

One Commerce Place, 99 Washington Avenue
Albany, NY 12231-0001

NYS Department of Transportation

Steven G. Kokkoris, P.E., Regional Director
Dulles State Office Building
317 Washington Street
Watertown, NY 13601

New York Independent System Operator

Michael Bemis, Board Chair
10 Krey Boulevard
Rensselaer, NY 12144

Empire State Development Corporation

Steve Hunt, North Country Regional Director
North Country Region: Watertown Office
Dulles State Office Building
Watertown, NY 13601

State Senator Joseph A. Griffo, 47th Senate District

207 Genesee Street Room 408
Utica, NY 13501

State Senator Patty Ritchie, 48th Senate District

Dulles State Office Building, Room 418
Watertown, NY 13601

State Assemblyman Ken Blankenbush, Assembly District 117

District Office
40 Franklin Street, Suite 2
Carthage, NY 13619

State Assemblyman William A. Barclay, Assembly District 120

District Office
200 North Second Street
Fulton, NY 13069

US Senator Charles E. Schumer

15 Henry Street, Room 100AF
Binghamton, NY 13901

US Senator Kirsten E. Gillibrand

100 State Street, Room 4195
Rochester, NY 14614

US Representative Elise Stefanik, District 21

120 Washington St., Suite 200
Watertown, NY 13601

US Representative Richard Hanna, District 22

258 Genesee Street
Utica, NY 13502

US Army Corps of Engineers

Steve Metivier, Chief, NY Application Evaluation Section
Regulatory Branch, Buffalo District Office
1776 Niagara Street
Buffalo, NY 14207

US Fish and Wildlife Service

David Stilwell, Field Supervisor
3817 Luker Road
Cortland, NY 13045

US Federal Aviation Administration

Carmine Gallo, Eastern Region Regional Administrator
1 Aviation Plaza
Jamaica, NY 11434

US Department of Defense

Steven J. Sample
Mission Evaluation Branch
3400 Defense Pentagon, Room 5C646
Washington, DC 10301

National Telecommunications and Information Administration

Herbert C. Hoover Building (HCHB)
U.S. Department of Commerce
1401 Constitution Avenue, N.W.
Washington, DC 20230

LOCAL AGENCIES

Lewis County Chamber of Commerce

7576 South State St.
Lowville, NY 13367

South Jefferson Chamber of Commerce

14 E. Church Street
Adams, NY 13605

NYS Tug Hill Commission

Katie Malinowski, Executive Director
Dulles State Office Building
317 Washington Street
Watertown, NY 13601-3782

Cornell Cooperative Extension

Lewis County
5274 Outer Stowe Street
Lowville, New York 13367

Development Authority of the North Country

Gary Turck, Chairman
317 Washington Street
Watertown, NY 13601

Lewis County Fire & Emergency Management

Robert A. Mackenzie III
5252 Outer Stowe St
Public Safety Building
Lowville, NY 13367

Lewis County Highway Department

David Becker, Superintendent
South State Street
Lowville, NY 13367

Jefferson County Fire & Emergency Management

Joseph D. Plummer
753 Waterman Drive
Watertown, NY 13601

Jefferson County Highway Department

James Lawrence, Jr., Superintendent
21897 County Route 190
Watertown, NY 13601

Town of Pinckney Highway Department

Don Cook, Highway Superintendent
587 County Route 194
Copenhagen, NY 13626

Town of Montague Highway Department

Clifford Young, Superintendent
6353 Salmon River Road
Lowville, NY 13367

Town of Harrisburg Highway Department

Terry C. Snyder, Superintendent
7886 Cobb Rd
Copenhagen, NY 13626

Town of Rodman Highway Department

Dale Tamblin, Superintendent
12509 School Street
Rodman, NY 13682

Copenhagen Volunteer Fire Department

P.O. Box 364
Copenhagen, NY 13626

Rodman Fire Department

21495 County Route 69
Rodman, NY 13682

Lorraine Volunteer Fire Department

20876 County Route 189, P.O. Box 89
Lorraine, NY 13659

Town of Watertown Fire Department

22825 County Route 67
Watertown, NY 13601

Castorland Fire Department

5187 St Rte 410, PO Box 116
Castorland, NY 13620

Lowville Fire Department

5420 Parkway Drive
Lowville, NY 13367

Redfield Fire Department

4879 County Rte 17
Redfield, NY 13437

Martinsburg Fire Department

5609 Whitaker Road, PO Box 353
Martinsburg, NY 13367

MUNICIPALITIES AND SCHOOL DISTRICTS IN PROJECT AREA

Lewis County

Linda D. Hoskins, County Clerk
Lewis County Court House
Lowville, NY 13367

Jefferson County

Gizelle J. Meeks, County Clerk

175 Arsenal Street
Watertown, NY 13601

Town of Pinckney

Sherry Harmych, Supervisor
587 County Route 194
Copenhagen, NY 13626

Town of Montague

Scott Shattuck, Town Supervisor
6353 Saloman River Road
Montague, NY

Town of Harrisburg

Dawn Zagurski, Town Supervisor
PO Box 218
West Leyden, NY 13489

Town of Rodman

Gary Stinson, Town Supervisor
PO Box 523
Rodman, NY 13682

Copenhagen School District

S. Connell, Superintendent
3020 Mechanic Street
PO Box 30
Copenhagen, NY 13626

Lowville Academy and Central School District

Cheryl Steckly, Superintendent
7668 State Street
Lowville, NY 13667

South Jefferson Central School District

Mary Beth Denny, Superintendent
South Jefferson CSD
P.O. Box 10
Adams, NY 13605

ADJACENT MUNICIPALITIES AND SCHOOL DISTRICTS

Town of Denmark, Lewis County

Thomas Fleming, Supervisor
3707 Roberts Rd
Carthage, NY 13619

Town of Lowville, Lewis County

Randall Schell, Supervisor
5533 Bostwick St
Lowville, NY 13367

Town of Martinsburg, Lewis County

Terrence Thisse, Supervisor
PO Box 36
Martinsburg, NY 13404

Town of Champion, Jefferson County

Bruce R. Ferguson, Town Supervisor
35087 Lewis Loop
Carthage, NY 13619

Town of Rutland, Jefferson County

Elizabeth A. Berghorn, Town Clerk
28411 NYS Route 126
Black River, NY 13612

Town of Watertown, Jefferson County

Joel Bartlett, Town Supervisor
22867 County Route 67
Watertown, NY 13601

Town of Worth, Jefferson County

Judith A. Nichols, Town Supervisor
P.O. Box 52
Lorraine, NY 13659

Town of Lorraine, Jefferson County

Vince Moore, Town Supervisor
20876 Co Rt 189
Lorraine, NY 13659

Town of Redfield, Oswego County

Tanya Yerdon, Town Supervisor
1 Balcom Dr.
Redfield, NY 13437

Village of Copenhagen

Scott Alexander, Mayor
P.O. Box 237
Copenhagen, NY 13626

Carthage Central School District

Peter J. Turner, Superintendent
25059 Woolworth Street
Carthage, NY 13619

Watertown City School District

Terry N. Fralick, Superintendent
1351 Washington Street, P.O. Box 586
Watertown, NY 13601

Sandy Creek Central School District
Stewart R. Amell, Superintendent
P.O. Box 248
Sandy Creek, NY 13145

PUBLIC INTEREST GROUPS

Nature Conservancy
195 New Karner Rd, Suite 200
Albany, NY 12205

Northern New York Audubon Society
P.O. Box 741
Tupper Lake, NY 12986

NY Public Interest Research Group
Albany - Legislative
107 Washington Avenue
Albany, NY 12210

ADDITIONAL STAKEHOLDERS

Watertown International Airport
22529 NY-12F
Dexter, NY 13634

Richland Airpark Inc.
RR Box 367
Richland, NY 13144

Duflo Airport
RT 3 BOX 92
Lowville, NY 13367

Tug Hill Farm Airport
Lowville, NY 13367

Guilfoyle Ambulance Services
Jeff Call, Director of Administration
438 Newell St
Watertown, NY 13601

National Grid
TBD

AT&T
TBD

Verizon
TBD

Exhibit B

Goals and Objectives of Stakeholder Involvement

Stakeholder	Consultation Goal	Implementation Plan and Schedule
<p>Host Municipalities:</p> <ul style="list-style-type: none"> • Lewis County • Jefferson County • Town of Pinckney • Town of Montague • Town of Harrisburg • Town of Rodman 	<ul style="list-style-type: none"> - Community outreach - Solicitation of local feedback - Information dissemination on proposed Project; Article 10 generally; intervenor funding process; PSS/scoping process; Application; etc. - Collection of all information necessary for Article 10 Application, required studies, etc. - Identification of community concerns, local landmarks, land uses, and resources - Adjustment of study scope/methodology based on stakeholder input and concerns - Provide contact information for Project and opportunities for direct engagement with public - Review local laws to determine anticipated compliance or need for waivers - Consultation to inform the Applicant's estimate of incremental municipal, public authority, or utility operating and infrastructure costs that will be incurred for police, fire, emergency, water, sewer, solid waste disposal, highway maintenance and other municipal, public authority, or utility services during the 	<ul style="list-style-type: none"> - Public Information Sessions and attendance at local meetings—Sessions currently planned for June and November 2016 - Informational mailings - Launch and update Project Website - Establish a staffed local office, local contact phone number, and dedicated project email address to respond to inquiries and accept public comment - Initiate direct contact with local officials and boards regarding upcoming Article 10 milestones, submission of PSS (at least 2 weeks prior to filing), etc. - Consult with appropriate officials/departments regarding specific topics, such as road use, visual impact assessment, land use and comprehensive plans, and to exchange other information sought by the Applicant or by Stakeholder communities - Provide timely public/stakeholder notices and information on public comment periods, scheduled meetings/information sessions, and opportunities for participation - Obtain all relevant local laws, building codes, comprehensive plans, zoning maps, etc.

	<p>construction and operation phases of the facility</p> <ul style="list-style-type: none"> - Develop avoidance, minimization and mitigation plans to address potential Project impacts 	<ul style="list-style-type: none"> - Discuss potential avoidance, minimization and mitigation measures to address identified impacts
<p>Host School Districts:</p> <ul style="list-style-type: none"> • Lowville Academy and Central School District • Copenhagen School District • South Jefferson Central School District 	<ul style="list-style-type: none"> - Solicitation of local feedback - Information dissemination on proposed Project - Discuss impacts to school bus routes, district operating budget, and school operations, if any - Adjustment of study scope/methodology based on stakeholder input and concerns - Provide contact information for Project and opportunities for direct engagement with public - Develop avoidance, minimization and mitigation plans to address potential Project impacts 	<ul style="list-style-type: none"> - Provide timely stakeholder notices and information - Initiate direct contact with local officials and boards regarding upcoming Article 10 milestones, submission of PSS (at least 2 weeks prior to filing), etc. - Consult with District to inform the Applicant's estimate of incremental school district operating and infrastructure costs due to the construction and operation of the facility - Work with school officials to develop transportation plans to minimize or avoid delays/traffic problems associated with construction of the Project - Schedule meetings and information sessions - Gather local feedback - Discuss potential avoidance, minimization and mitigation measures to address identified impacts
<p>Host Community Highway Departments:</p> <ul style="list-style-type: none"> • New York State Department of Transportation • Lewis County Highway Department • Jefferson County Highway Department • Town of Pinckney Highway Department 	<ul style="list-style-type: none"> - Solicitation of local feedback - Information dissemination on proposed Project - Gather information on transportation routes, condition and capacity of local roads - Discuss impacts to transportation and local infrastructure during and after construction; 	<ul style="list-style-type: none"> - Obtain and review Highway Department requirements for temporary radius improvements, transportation routes, and use of right-of-way - Initiate direct contact with local officials and boards regarding upcoming Article 10 milestones, submission of PSS (at least 2 weeks prior to filing), etc.

<ul style="list-style-type: none"> • Town of Harrisburg Highway Department • Town of Montague Highway Department • Town of Rodman Highway Department 	<p>transportation routes, improvements and use of right-of-way; and contingency plans in the event of an emergency</p> <ul style="list-style-type: none"> - Develop avoidance, minimization and mitigation plans to address potential Project impacts 	<ul style="list-style-type: none"> - Meet with highway officials to discuss concerns, potential impacts, avoidance/minimization strategies and potential mitigation - Work with local officials to develop transportation plans to minimize or avoid delays/traffic problems associated with construction of the Project - Provide timely stakeholder notices and information - Discuss potential avoidance, minimization and mitigation measures to address identified impacts
<p>Adjacent Municipalities:</p> <ul style="list-style-type: none"> • Town of Denmark • Town of Lowville • Town of Martinsburg • Town of Champion • Town of Rutland • Town of Worth • Town of Watertown • Town of Lorraine • Town of Redfield • Village of Copenhagen 	<ul style="list-style-type: none"> - Solicitation of local feedback - Information dissemination on proposed Project - Identification of community concerns, local landmarks, land uses, and resources - Adjustment of study scope/methodology based on stakeholder input and concerns - Provide contact information for Project and opportunities for direct engagement with public - Develop avoidance, minimization and mitigation plans to address potential Project impacts 	<ul style="list-style-type: none"> - Provide timely stakeholder notices and information - Initiate direct contact with local officials and boards regarding upcoming Article 10 milestones, submission of PSS (at least 2 weeks prior to filing), etc. - Consult with communities to ascertain local concerns - Work with school officials to develop transportation plans to minimize or avoid delays/traffic problems associated with construction of the Project - Schedule meetings and information sessions - Gather local feedback - Discuss potential avoidance, minimization and mitigation measures to address identified impacts
<p>Adjacent School Districts:</p> <ul style="list-style-type: none"> • Carthage Central School District 	<ul style="list-style-type: none"> - Solicitation of local feedback - Information dissemination on proposed Project 	<ul style="list-style-type: none"> - Provide timely stakeholder notices and information - Initiate direct contact with local officials and boards

<ul style="list-style-type: none"> • Watertown City School District • Sandy Creek Central School District 	<ul style="list-style-type: none"> - Develop avoidance, minimization and mitigation plans to address potential Project impacts 	<p>regarding upcoming Article 10 milestones, submission of PSS (at least 2 weeks prior to filing), etc.</p> <ul style="list-style-type: none"> - Consult with District to ascertain local concerns - Work with school officials to develop transportation plans to minimize or avoid delays/traffic problems associated with construction of the Project - Schedule meetings and information sessions - Gather local feedback
<p>Emergency Response Organizations:</p> <ul style="list-style-type: none"> • Local Fire and Rescue Departments and Companies • Lewis County Emergency Services • Jefferson County Emergency Services • NYS Division of Homeland Security and Emergency Services 	<ul style="list-style-type: none"> - Inform emergency responders about proposal, construction process, operation, potential impacts on transportation routes, and contingency plans - Solicitation of local feedback - Information dissemination on proposed Project - Develop avoidance, minimization and mitigation plans to address potential Project impacts 	<ul style="list-style-type: none"> - Provide timely stakeholder notices and information - Initiate direct contact with local agencies regarding upcoming Article 10 milestones, submission of PSS (at least 2 weeks prior to filing), etc. - Consult with departments to ascertain local concerns - Work with emergency responders to develop transportation plans and contingency plans to minimize or avoid delays/traffic problems associated with construction of the Project - Schedule meetings and information sessions - Gather local feedback - Discuss potential avoidance, minimization and mitigation measures to address identified impacts
<p>Aviation and Defense:</p> <ul style="list-style-type: none"> • Federal Aviation Administration (FAA) • US Department of Defense (DoD) 	<ul style="list-style-type: none"> - Ascertain potential impacts of the project on radar, defense systems, flight paths, and facility operations 	<ul style="list-style-type: none"> - Request an informal Department of Defense review of the proposed construction or alteration, in accordance with 32 Code of Federal

<ul style="list-style-type: none"> • Local Airports/Heliports 	<ul style="list-style-type: none"> - Adjustment of study scope/methodology based on stakeholder input and concerns - Solicitation of stakeholder feedback - Information dissemination on proposed Project - Develop avoidance, minimization and mitigation plans to address potential Project impacts 	<p>Regulations, Section 211.7; or a formal Department of Defense review of the proposed construction or alteration in accordance with 32 Code of Federal Regulations, Section 211.6</p> <ul style="list-style-type: none"> - FAA consultations, as required by law, on potential impacts to airport operations and radar, as well as potential emergency lighting requirements - Consultations with stakeholders to identify any potential impacts to radar, flight paths, national defense, or other concerns - Discuss potential avoidance, minimization and mitigation measures to address identified impacts - Identify the necessity of consultations with the operators of airports or heliports - Include outreach to inform such operators of the proposed facility and its location prior to the submission of the preliminary scoping statement - Pursue consultations with operators of airports and heliports that are non-military facilities, including providing a detailed map and description of such construction or alteration to such operators, and a request for review of and comment on such construction or alteration by such operators
--	---	---

<p>Utilities/Communications:</p> <ul style="list-style-type: none"> • National Telecommunications and Information Administration • National Grid • Verizon • AT&T 	<ul style="list-style-type: none"> - Ascertain potential impacts of the project on communications infrastructure, energy transmission and interconnection, and the electric grid - Solicitation of stakeholder feedback - Information dissemination on proposed Project - Develop avoidance, minimization and mitigation plans to address potential Project impacts 	<ul style="list-style-type: none"> - Consultations with stakeholders to identify any potential impacts to utility infrastructure, communications, grid reliability/security, etc. - Discuss potential avoidance, minimization and mitigation measures to address identified impacts - Provide timely stakeholder notices and information
<p>Environmental Agencies and Public Interest Groups:</p> <ul style="list-style-type: none"> • NYS Department of Environmental Conservation (DEC) • US Fish and Wildlife Service (FWS) • US Army Corps of Engineers • The Nature Conservancy • Northern New York Audubon Society 	<ul style="list-style-type: none"> - Ascertain potential impacts of the project on environmental resources, including avian and bat species, plants, wetlands, protected species and habitat, land use, public health and safety, emissions, noise, geology/soils, water resources, agricultural lands, and other matters of concern to stakeholders - Collection of all information necessary for Article 10 Application, required studies, etc. - Identification of agency concerns, state parks and scenic resources, wildlife management areas, conservation easements, protected lands and other resources - Adjustment of study scope/methodology based on stakeholder input and concerns - Consultation with agencies regarding 	<ul style="list-style-type: none"> - Review bird/bat studies with DEC and FWS to determine adequacy of scope and methodology, and compliance of proposed plan with established regulations, guidance and study protocols - Confer with DEC and Army Corps regarding wetlands delineations, stream crossings, and other relevant issues - Confer with DEC and FWS regarding potential concerns associated with endangered species, the need for incidental take permits, and the Migratory Bird Treaty Act - Confer with DEC regarding Water Quality Certification requirements and process - Consultation to develop an acceptable input data set, including modeling for the Applicant's proposed facility and inputs for the emissions analysis

	<p>regulatory compliance, permit requirements, etc.</p> <ul style="list-style-type: none"> - Solicitation of stakeholder feedback - Information dissemination on proposed Project - Develop avoidance, minimization and mitigation plans to address potential Project impacts 	<ul style="list-style-type: none"> - Consultation with the state agencies and authorities whose requirements are the subject of the State Laws and Regulations exhibit to determine whether the Applicant has correctly identified all such requirements, potentially required permits, etc. - Discuss potential avoidance, minimization and mitigation measures to address identified impacts - Provide timely stakeholder notices and information
<p>Agricultural Agencies and Stakeholders:</p> <ul style="list-style-type: none"> • NYS Department of Agriculture and Markets (Ag & Mkts) • Cornell Cooperative Extension 	<ul style="list-style-type: none"> - Ascertain potential impacts of the project on agricultural resources - Consultation with agencies regarding regulatory compliance and agency guidance - Develop avoidance, minimization and mitigation plans to address potential Project impacts - Adjustment of study scope/methodology based on stakeholder input and concerns 	<ul style="list-style-type: none"> - Solicit feedback from stakeholders on any potential agricultural concerns unique to Project Area - Confer with Ag & Mkts regarding compliance with agency guidance and policies - Request information or guidance from stakeholders on potential agricultural impacts, as well as potential avoidance, minimization and mitigation measures to address those impacts - Consultation with the state agencies and authorities whose requirements are the subject of the State Laws and Regulations exhibit to determine whether the Applicant has correctly identified all such requirements - Provide timely stakeholder notices and information

<p>Historical/Cultural/Socioeconomic Groups:</p> <ul style="list-style-type: none"> • NYS Office of Parks, Recreation and Historic Preservation • Empire State Development Corporation • Lewis County Chamber of Commerce • South Jefferson Chamber of Commerce • NYS Tug Hill Commission • Development Authority of the North Country 	<ul style="list-style-type: none"> - Ascertain potential impacts of the Project on historical and cultural resources - Ascertain potential socioeconomic effects of Project - Consultation with agencies regarding regulatory compliance and agency guidance - Identify resources and landmarks of local concern - Develop avoidance, minimization and mitigation plans to address potential Project impacts - Adjustment of study scope/methodology based on stakeholder input and concerns 	<ul style="list-style-type: none"> - Consultation in accordance with Section 14.09 of the New York State Parks, Recreation, and Historic Preservation Law and/or Section 106 of the Historic Preservation Act, - Consultation with OPRHP and DPS regarding cultural resources studies and to determine the need for and scope of work for any required Phase II cultural resources study - Consultation to establish representative viewpoints for the photographic simulations of the facility and interconnections - Gather information on resources and landmarks of local concern for cultural impact assessment - Develop information on potential socioeconomic effects of Project, including job creation, tax revenues, and incidental effects on local business and industry - Schedule meetings and information sessions - Gather local feedback - Consultation with the state agencies and authorities whose requirements are the subject of the State Laws and Regulations exhibit to determine whether the Applicant has correctly identified all such requirements - Discuss potential avoidance, minimization and mitigation measures to address identified impacts
--	--	---

		<ul style="list-style-type: none"> - Provide timely stakeholder notices and information - Consult with DEC regarding Environmental Justice considerations
<p>Energy Agencies and Groups:</p> <ul style="list-style-type: none"> • NYS Department of Public Service (DPS) • NY Independent Systems Operator • New York State Research and Development Authority 	<ul style="list-style-type: none"> - Ascertain potential impacts of the project on energy transmission and interconnection, and the electric grid - Discuss the Project’s compliance with state energy planning objectives - Solicitation of stakeholder feedback - Information dissemination on proposed Project - Develop avoidance, minimization and mitigation plans to address potential Project impacts - Achieve compliance with Article 10 regulatory requirements, an adequate PIP and PSS, a complete Application, etc. - Adjustment of study scope/methodology based on stakeholder input and concerns 	<ul style="list-style-type: none"> - Consultation to develop an acceptable input data set, including modeling for the Applicant’s proposed facility and inputs for required emissions and electric system effects analysis - Work with NYISO to coordinate System Reliability Impact Study (SRIS) - Confer with stakeholders to ascertain the ways in which the Project will advance state energy planning objectives and be consistent with the State Energy Plan and state policy - Consultation with the state agencies and authorities whose requirements are the subject of the State Laws and Regulations exhibit to determine whether the Applicant has correctly identified all such requirements - Consultation to identify applicable requirements to be used to demonstrate the degree of compliance with all relevant applicable reliability criteria of the Northeast Power Coordinating Council Inc., New York State Reliability Council, and the local interconnecting transmission utility,

		<p>including any criteria regarding blackstart and fuel switching capabilities</p> <ul style="list-style-type: none"> - Discuss potential avoidance, minimization and mitigation measures to address identified impacts - Provide timely stakeholder notices and information
<p>Other Affected Federal and State Agencies:</p> <ul style="list-style-type: none"> • NYS Department of Health • NYS Attorney General • NYS Office of General Services • NYS Department of State 	<ul style="list-style-type: none"> - Contact Stakeholders - Disseminate Information regarding Project, Article 10, and intervenor funding - Provide contact information - Identify any specific issues or concerns - Schedule follow up meeting(s) and consultation(s), as appropriate - Adjustment of study scope/methodology based on stakeholder concerns 	<ul style="list-style-type: none"> - Consultation with the agencies and authorities whose requirements are the subject of the Laws and Regulations exhibits to determine whether the Applicant has correctly identified all such requirements - Provide timely stakeholder notices and information - Ensure scope and methodology of public health and safety studies are adequate to address stakeholder concerns
<p>Elected Representatives:</p> <ul style="list-style-type: none"> • NYS Governor’s Office • State Senators Joseph Griffo and Patty Ritchie, 47th and 48th Senate Districts • State Assemblymen Ken Blankenbush and William Barclay, Assembly Districts 117 and 120 • US Senator Charles Schumer • US Senator Kirsten Gillibrand • US Representatives Elise Stefanik and Richard Hanna, 21st and 22nd 	<ul style="list-style-type: none"> - Contact representatives - Disseminate Information regarding Project and provide contact info - Identify any specific issues or concerns - Schedule follow up meeting(s) and consultation(s), as appropriate 	<ul style="list-style-type: none"> - Provide timely stakeholder notices and information - Direct contact through telephone calls, mailings, meetings and discussions, as appropriate

Congressional District		
Other Stakeholders/Agencies: <ul style="list-style-type: none"> • NYS Public Interest Research Group 	<ul style="list-style-type: none"> - Contact Stakeholders - Disseminate Information regarding Project, Article 10, and intervenor funding - Provide contact information - Identify any specific issues or concerns - Schedule follow up meeting(s) and consultation(s), as appropriate 	<ul style="list-style-type: none"> - Provide timely stakeholder notices and information - Direct contact through telephone calls, mailings, meetings and discussions, as appropriate

