



April 27, 2012

The Honorable Jaclyn A. Brillig
Secretary to the Commission
NYS Public Service Commission
Three Empire State Plaza
Albany, NY 12223-1350

**RE: Proceeding on Motion of the Commission as to the Rates, Charges, Rules
and Regulations of the Long Island Water Corporation d/b/a Long Island
American Water for Water Services
CASE 11-W-0200**

Dear Secretary Brillig:

Please find attached for filing in the above-captioned proceeding, a copy of the Affidavit of Publication demonstrating newspaper publication of the notice to the public of the major rate changes and their effective dates in compliance with ordering paragraph 5 of the March 20, 2012 Commission Order and Section 720-8.1 of the Public Service Commission's rules (16 NYCRR § 720-8.1(a)(2)). Also attached are Tear Sheets showing the notices as they appeared in the newspaper.

Very truly yours,

/s/ Suzana Duby

Suzana Duby

cc: Joseph Dowling, Esq. (via e-mail)
William Varley (via e-mail)

Enc.

NEWSDAY

AFFIDAVIT OF PUBLICATION

STATE OF NEW YORK

LONG ISLAND AMERICAN WATER
733 SUNRISE HIGHWAY
LYNBROOK NY 11563

COUNTY OF SUFFOLK)

R. Lopes of Newsday, LLC. ("Newsday") being duly sworn, says that such person is, and at the time of publication of the annexed Notice was, a duly authorized custodian of records of Newsday, LLC, the publisher of *Newsday*, a newspaper published in the Counties of Suffolk, Nassau, Queens, and elsewhere in the State of New York and other places, and that the Notice (a copy of which is annexed hereto), was published in the following editions/counties of Newsday, as indicated by the initial in the box:

Nassau

Suffolk

Queens

on the following date(s):

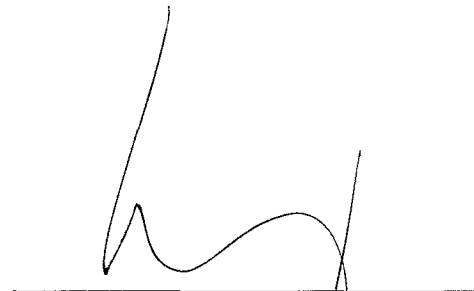
April 2nd 2012

April 9th 2012

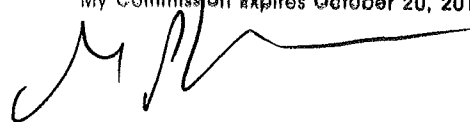
April 16th 2012

April 23rd 2012

SWORN to before me this
25th Day of April 2012



GUY P WASSER
NOTARY PUBLIC-STATE OF NEW YORK
No. 01WA6045924
Qualified in Suffolk County
My Commission Expires October 20, 2014



★ Married . . . with awards

Martina McBride and Train's Pat Monahan teamed up to help a New Jersey couple get married on stage during the Academy of Country Music Awards last night in Las Vegas, The Associated Press reports.

The singers performed McBride's "Marry Me." Christina Davidson and Frank Tucci's ceremony — quick even for a Vegas wedding — went on behind the singers during the performance and fans could hear the bride and groom say "I will" before their first kiss as a married couple, bringing the crowd to its feet.

Meanwhile, Taylor Swift won her second consecutive entertainer of the year ACM award, just 24 hours after she was saluted by first lady Michelle Obama for her charity work on The Kids' Choice Awards. Swift became just the second woman to win the award twice since Carrie Underwood.

After hugging her way to the

stage, Swift, 22, took a moment to say hello to Kevin McGuire and his family. McGuire, a high school football player who has cancer, was to have been her date to the awards but was hospitalized and couldn't make it. "He's not here but I promised him I would give him a shout-out," she said.

Swift beat out an all-male field that included Kenny Chesney, who was shut out at the awards after leading all nominees nine. Miranda Lambert, Jason Aldean and Kelly Clarkson were the night's top winners with two awards apiece.

The Eli Young Band's smash "Crazy Girl" brought the Texas quartet its first win, for song of the year. Thompson Square took vocal duo of the year over Sugarland in an early award. "American Idol" winner Scotty McCreery won the fan-voted new artist of the year. Toby Keith won video of the year for "Red Solo Cup."



Frank Tucci and Christina Davidson were wed on stage.

'Games' keeps No. 1 spot

"The Hunger Games" is still the first item on the menu for movie fans, taking in \$61.1 million to remain the No. 1 film in its second weekend, The Associated Press reports.

Studio estimates yesterday put Lionsgate's "The Hunger Games" well ahead of Sam Worthington's action sequel "Wrath of the Titans," which opened in second place with \$34.2 million.

That's far below the \$61.2 million opening of its predecessor, "Clash of the Titans," two years ago. But distributor Warner Bros. opened "Clash" on Easter weekend, when young fans already were off school and in holiday mode.



"The Hunger Games" pulls in \$61.1 million in second week.

With Easter coming next weekend, the studio expects "Wrath" to catch up to "Clash" in the next few weeks.

1. The Hunger Games	\$61.1 million
2. Wrath of the Titans	\$34.2 million
3. Mirror Mirror	\$19 million
4. 21 Jump Street	\$15 million
5. Dr. Seuss' the Lorax	\$8 million
6. John Carter	\$2 million
7. Salmon Fishing in the Yemen	\$1.3 million
8. Act of Valor	\$1 million
9. A Thousand Words	\$915,000
10. Journey 2: The Mysterious Island	\$835,000

THE DENTAL PLAN

For Everyone!

\$99/yr
Individual Plan
One Time \$19 Enrollment Fee

SAVE UP TO 70%

EDP
Dental Plan
Where Smiles Cost Less.

General Dentist Procedure	Without EDP	With EDP
6 Month Check - Up	\$60	\$9
Routine Cleaning	\$90	\$29
Filling (Amalgam)	\$110	\$35
Crown (Porcelain)	\$995	\$495
Root Canal (Anterior)	\$600	\$279
Complete Upper Denture	\$1,495	\$575
Tooth Extraction	\$150	\$55
X-Ray (Full Mouth)	\$120	\$39

Plus Save 25% on Braces and Implants

• Thousands of Dentists in NY • This is Not Insurance

Enroll Now: 631.272.5230

WWW.EDPDENTAL.COM ND

PUBLIC NOTICE

THREE YEAR RATE PLAN APPROVED FOR LONG ISLAND AMERICAN WATER

The New York State Public Service Commission (PSC) approved a rate plan for Long Island American Water that will be phased in over three years beginning April 1, 2012. The new rates would be calculated to increase the company's annual base revenues by \$3 million (6.02%), \$1.4 million (2.64%) and \$1.2 million (2.17%) in the first, second and third years, respectively. For metered customers, however, the net effect in the first year would be a base rate increase of \$1.4 million or 2.46%. The increase in rates by service classification is as follows:

Service Classification	Percent Increase Effective 4/1/2012	Percent Increase Effective 4/1/2013	Percent Increase Effective 4/1/2014
1 and 1a - General Water Service	2.46%	2.64%	2.17%
2 - Private Fire Hydrant Service	6.02%	2.64%	2.17%
3 - Lawn Sprinklers	2.46%	2.64%	2.17%
4 - Public Fire Protection	6.02%	2.64%	2.17%
5 - Miscellaneous Water Revenue	6.02%	2.64%	2.17%
6 - Private Fire Protection	6.02%	2.64%	2.17%

For the average residential customer using 72,000 gallons of water a year and serviced with a 5/8-inch meter, the bill would increase by \$9.36 a year (averages out to \$0.78 per month). The annual bill for the average commercial customer using 200,000 gallons of water a year and serviced by a one-inch meter would increase \$23.38 (averages out to \$1.95 per month). Our tap water will still be less than a penny per gallon. For more information, visit us online at www.longislandamwater.com, or contact our Customer Service Center at 1-877-426-6999.

Adam's apples house deeper voices

HOWCOME?
Kathy Akers

Special to Newsday

Q What's an Adam's apple for, and why do some have it while others don't? — A reader

A large Adam's apple can look like someone's swallowed a piece of fruit — and it's lodged in his throat. But an Adam's apple isn't part of the esophagus, the tube that food passes through on its way to the stomach. Instead, it's part of the voice box (larynx), the place where sound production starts.

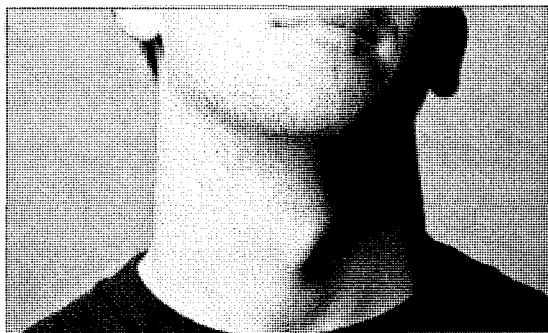
You might have noticed that little kids don't have Adam's apples, yet they can talk perfectly well. But when kids — usually

boys — become teenagers, the mysterious lump often appears on the front of their neck. How come?

All of the different human voices we hear around us, in a restaurant, office, or school, start in the larynx. If you could see inside your neck, you'd realize that the larynx isn't really a box, but just the cage-like top of the trachea, or windpipe.

Like your nose, the stiff part of the larynx is made of cartilage, forming a boxy framework protecting soft tissues inside, such as the vocal cords. The vocal cords — two bands of muscle covered in mucus membranes — vibrate when air passes over them from the lungs. When the "cords" contract and shorten, they produce higher sounds. To produce lower sounds, the vocal cords relax and lengthen.

The smaller your larynx, and the shorter your vocal cords, the higher the frequency and sound of your voice.



In men, testosterone causes vocal cords to grow more — and so the voice box grows larger, too, making the Adam's apple visible.

Which is why children's voices are higher than those of most teenagers and adults: Kids' vocal cords are usually less than a half-inch long.

But as children grow, so do their vocal cords. Bigger vocal cords would soon outgrow the small voice box of childhood. So the larynx changes,

too, its cartilage shell enlarging like the shell on a growing baby turtle.

After the vocal tract's growth spurt, our necks may look different. The bigger cartilage cage can appear as a bump on the front of the neck, especially visible when swallowing. Presto: An Adam's apple.

So if everyone's larynx gets bigger, why do boys and men seem to have most of the Adam's apples? In boys, hormones like testosterone cause vocal cords to grow even more, making most men's voices deeper than most women's. Along with the cords, the voice box grows extra-large, too. So for boys, a cracking, changing voice is often accompanied by a wasn't-there-before lump on the front of the neck.

But women can have visible Adam's apples, too, especially if they have very little fat in their necks. Likewise, depending on neck structure and body fat, many men don't have prominent Adam's apples.

SEND QUESTIONS to How Come?, Newsday, 235 Pinelawn Rd., Melville, NY 11747-4250, or email howcome@word-detective.com. If it's answered here, you'll receive "How Come? In the Neighborhood" by Kathy Wollard and Debra Solomon (Workman Publishing).

PUBLIC NOTICE

THREE YEAR RATE PLAN APPROVED FOR LONG ISLAND AMERICAN WATER

The New York State Public Service Commission (PSC) approved a rate plan for Long Island American Water that will be phased in over three years beginning April 1, 2012. The new rates would be calculated to increase the company's annual base revenues by \$3 million (6.02%), \$1.4 million (2.64%) and \$1.2 million (2.17%) in the first, second and third years, respectively. For metered customers, however, the net effect in the first year would be a base rate increase of \$1.4 million or 2.46%. The increase in rates by service classification is as follows:

Service Classification	Percent Increase Effective 4/1/2012	Percent Increase Effective 4/1/2013	Percent Increase Effective 4/1/2014
1 and 1a - General Water Service	2.46%	2.64%	2.17%
2 - Private Fire Hydrant Service	6.02%	2.64%	2.17%
3 - Lawn Sprinklers	2.46%	2.64%	2.17%
4 - Public Fire Protection	6.02%	2.64%	2.17%
5 - Miscellaneous Water Revenue	6.02%	2.64%	2.17%
6 - Private Fire Protection	6.02%	2.64%	2.17%

For the average residential customer using 72,000 gallons of water a year and serviced with a 5/8-inch meter, the bill would increase by \$9.36 a year (averages out to \$0.78 per month). The annual bill for the average commercial customer using 200,000 gallons of water a year and serviced by a one-inch meter would increase \$23.38 (averages out to \$1.95 per month). Our tap water will still be less than a penny per gallon. For more information, visit us online at www.longislandamwater.com, or contact our Customer Service Center at 1-877-426-6999.

WE HEAR YOU!

Questions about Newsday? Call 1-800-NEWSDAY.

Newsday

carl's fence
www.carlsfence.net

ORDER YOUR POOL FENCE EARLY!

ALUMINUM FENCE AND RAIL MAINTENANCE FREE & BEAUTIFUL

RATED A+ BY THE BETTER BUSINESS BUREAU

- PVC Fence
- Hand Rail
- Custom Wood
- Estate Rail
- Repairs
- Chain-Link
- Stokade
- Post & Rail

516.579.7110
FAX: 516.579.9474

4301 Hicksville Rd., Bethpage (Rte. 107)
(Between Hemp. Tpke. & Southern State Exit 29)
Store Hours: Mon-Fri, 9-6 • Sat, 9-5 • Sundays 11-3



Amateur video purports to show smoke from shelling in Homs, Syria, an opposition stronghold.

What cease-fire? Syria firing again

BEIRUT — Syria's 4-day-old cease-fire appeared to be eroding quickly yesterday, with regime forces firing dozens of tank shells and mortar rounds in the opposition stronghold of Homs, hours before the arrival of a first team of UN truce monitors.

The overall level of violence has dropped, but escalating regime attacks over the weekend raised new doubts about President Bashar Assad's commitment to a plan by special envoy Kofi Annan to end 13 months of violence and launch talks on Syria's political future.

Assad accepted the truce deal at the prodding of Russia, but his compliance has been limited. He has halted shelling of rebel-held neighborhoods, with the exception of Homs, but ignored calls to pull troops out of urban centers, apparently for fear of losing control over the country. Rebel fighters have also kept up attacks, including shooting ambushes.

The international community hopes UN observers will be able to stabilize the cease-fire, which formally took effect Thursday. A six-member advance team of UN observers headed to Damascus yesterday, a day after a unanimous UN Security Council approved such a mission. A larger team of 250 observers requires more negotiations with Syria next week.

Secretary-General Kofi Annan expressed serious concern at the shelling of Homs and said "the whole world is watching with skeptical eyes." With Assad seen as a reluctant participant in Annan's plan, the observers' success will depend on how much access they can negotiate in Syria, analysts said.

The Security Council demanded freedom of movement for the UN team, but the regime could create obstacles; an Arab League observer mission's failure earlier this year was blamed in part on restrictions imposed on the visitors. — AP

DONATE YOUR CAR

Wheels For Wishes *Benefiting*



METRO NEW YORK AND WESTERN NEW YORK CHAPTER

- *Free Vehicle/Boat Pickup ANYWHERE
- *We Accept All Vehicles Running or Not
- *Fully Tax Deductible

*Share the Power of a Wish



WheelsForWishes.org Call: 1-347-913-7403

PUBLIC NOTICE

THREE YEAR RATE PLAN APPROVED FOR LONG ISLAND AMERICAN WATER

The New York State Public Service Commission (PSC) approved a rate plan for Long Island American Water that will be phased in over three years beginning April 1, 2012. The new rates would be calculated to increase the company's annual base revenues by \$3 million (6.02%), \$1.4 million (2.64%) and \$1.2 million (2.17%) in the first, second and third years, respectively. For metered customers, however, the net effect in the first year would be a base rate increase of \$1.4 million or 2.46%. The increase in rates by service classification is as follows:

Service Classification	Percent Increase Effective 4/1/2012	Percent Increase Effective 4/1/2013	Percent Increase Effective 4/1/2014
1 and 1a - General Water Service	2.46%	2.64%	2.17%
2 - Private Fire Hydrant Service	6.02%	2.64%	2.17%
3 - Lawn Sprinklers	2.46%	2.64%	2.17%
4 - Public Fire Protection	6.02%	2.64%	2.17%
5 - Miscellaneous Water Revenue	6.02%	2.64%	2.17%
6 - Private Fire Protection	6.02%	2.64%	2.17%

For the average residential customer using 72,000 gallons of water a year and serviced with a 5/8-inch meter, the bill would increase by \$9.36 a year (averages out to \$0.78 per month). The annual bill for the average commercial customer using 200,000 gallons of water a year and serviced by a one-inch meter would increase \$23.38 (averages out to \$1.95 per month). Our tap water will still be less than a penny per gallon. For more information, visit us online at www.longislandwater.com, or contact our Customer Service Center at 1-877-426-6999.

newsday.com NEWSDAY, MONDAY, APRIL 16, 2012

Catch **SPRING FEVER**
WHAT'S HAPPENING
Long Island
www.whats happeninglongisland.com



Featuring 4 Great Sections

Dining & Entertainment
Health & Beauty
Spring Values
Home and Garden

Delivered Friday, May 4th

in 6 Targeted Zones to Newsday Home Delivery Subscribers
Plus Bonus Circulation in Key Demographic Zip Codes.

Newsday
MEDIA GROUP
To Advertise call 631-843-4050

Hope for China's battered women

BY GILLIAN WONG
The Associated Press

BEIJING — Her head was ringing from the blows. Once, twice, three times, her husband slammed her face into the living room floor.

Kim Lee tried to twist her tall but skinny frame out from under his 200-pound body, scraping her elbows and knees on the carpet. He kept on pounding. Eight, nine, 10 times — she thought she might black out.

Then, close to the floor, she glimpsed her 3-year-old daughter, Lydia. "Stop!" the child cried. "What are you doing? Stop, Daddy, stop!" She jumped on her father and scratched his arm.

He cursed as he loosened his grip on his wife, and she crawled away.

It wasn't the first time for the couple, who met in 1999 and married in 2005, that Li Yang, founder of China's most famous English-language teach-

ing system, "Crazy English," had struck her — but for his American wife, it was going to be the last.

She scooped up her wailing child, grabbed their passports and a wad of cash, and left their Beijing apartment for the police station, where police told her they could do nothing unless her husband came also. They took her to a hospital, where male staffers examined her, placed stickers on her body and photographed the bruises on her head, knees, elbows and back.

Challenging cultural views

Those pictures, posted online by Lee last August, went viral — and in doing so, she opened the door to a torrent of anguish about domestic violence in her adopted country, inadvertently becoming a folk hero for Chinese battered women. Lee filed for divorce in October.

Domestic violence every-

where lives in the shadows, and in China it thrives in a secrecy instilled by tradition that holds family conflicts to be private. It is also hard to go public in a country where many still consider women subservient to their husbands, and there is no specific national law against domestic violence.

There are no official data on domestic violence in China today, and underreporting is common.

A recent nationwide survey by the All-China Women's Federation found, however, that 25 percent of women reported domestic violence from their spouses, almost the same as in the United States. Smaller-scale studies report a rate in Chinese rural areas of up to 65 percent. The violence takes many forms, from physical and sexual assault to emotional abuse or economic deprivation.

Lee's case has spawned tens of thousands of postings on Chinese Twitter-like sites, along



Kim Lee is leading a campaign against domestic violence.

with protests and talk show debates. It is especially explosive because she is a foreigner, at a time when China is particularly sensitive about how it is understood and treated by the world. "A lot of people said, 'Oh, is it

because Kim is an American and so she's too strong-willed, or her personality is too strong?' . . . Some others have asked whether she is making a big fuss over a small issue," says Feng Yuan, founder and chair of the Anti-Domestic Violence Network in Beijing. "This shows that in terms of the public perception of domestic violence, we still have a long way to go."

Still fighting her fight

After the scandal with his wife erupted last year, Li acknowledged in an interview with Chinese state broadcaster CCTV that his relationship with his parents was bereft of emotional or physical intimacy. He said he still suffers from mild depression. "You will find that my ability to love is poor. It is a problem," he said.

Now Lee's divorce case is before the courts, and she can do little but wait. In the meantime, she has changed the locks on her apartment.

DONATE YOUR CAR

Wheels For Wishes Benefiting

MAKE-A-WISH.

METRO NEW YORK AND WESTERN NEW YORK CHAPTER

*Free Vehicle/Boat Pickup ANYWHERE
*We Accept All Vehicles Running or Not
*Fully Tax Deductible

*Share the Power of a Wish

WheelsForWishes.org Call: 1-347-913-7403

CREATE MEMORIES HERE ON LONG ISLAND

Call 1-877-386-6654 x290 For Your FREE Travel Guide!

PUBLIC NOTICE

THREE YEAR RATE PLAN APPROVED FOR LONG ISLAND AMERICAN WATER

The New York State Public Service Commission (PSC) approved a rate plan for Long Island American Water that will be phased in over three years beginning April 1, 2012. The new rates would be calculated to increase the company's annual base revenues by \$3 million (6.02%), \$1.4 million (2.64%) and \$1.2 million (2.17%) in the first, second and third years, respectively. For metered customers, however, the net effect in the first year would be a base rate increase of \$1.4 million or 2.46%. The increase in rates by service classification is as follows:

Service Classification	Percent Increase Effective 4/1/2012	Percent Increase Effective 4/1/2013	Percent Increase Effective 4/1/2014
1 and 1a - General Water Service	2.46%	2.64%	2.17%
2 - Private Fire Hydrant Service	6.02%	2.64%	2.17%
3 - Lawn Sprinklers	2.46%	2.64%	2.17%
4 - Public Fire Protection	6.02%	2.64%	2.17%
5 - Miscellaneous Water Revenue	6.02%	2.64%	2.17%
6 - Private Fire Protection	6.02%	2.64%	2.17%

For the average residential customer using 72,000 gallons of water a year and serviced with a 5/8-inch meter, the bill would increase by \$9.36 a year (averages out to \$0.78 per month). The annual bill for the average commercial customer using 200,000 gallons of water a year and serviced by a one-inch meter would increase \$23.38 (averages out to \$1.95 per month). Our tap water will still be less than a penny per gallon. For more information, visit us online at www.longislandamwater.com, or contact our Customer Service Center at 1-877-426-6999.