

Legend
Project Layout

- Offshore Kilometer Point
- NYS Territorial Waters Boundary
- SFEC-NYS Cable Route
- SFEC-Outer Continental Shelf (OCS) Cable Route
- SFEC-NYS Cable Corridor
- SFEC-OCS Cable Corridor

SFEC-NYS Offshore Cable Corridor (180-Meters)

NYS 3 Nautical Mile Territorial Waters Boundary

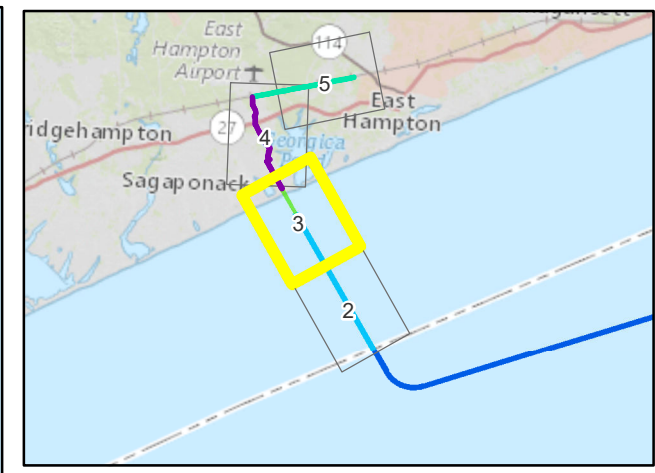
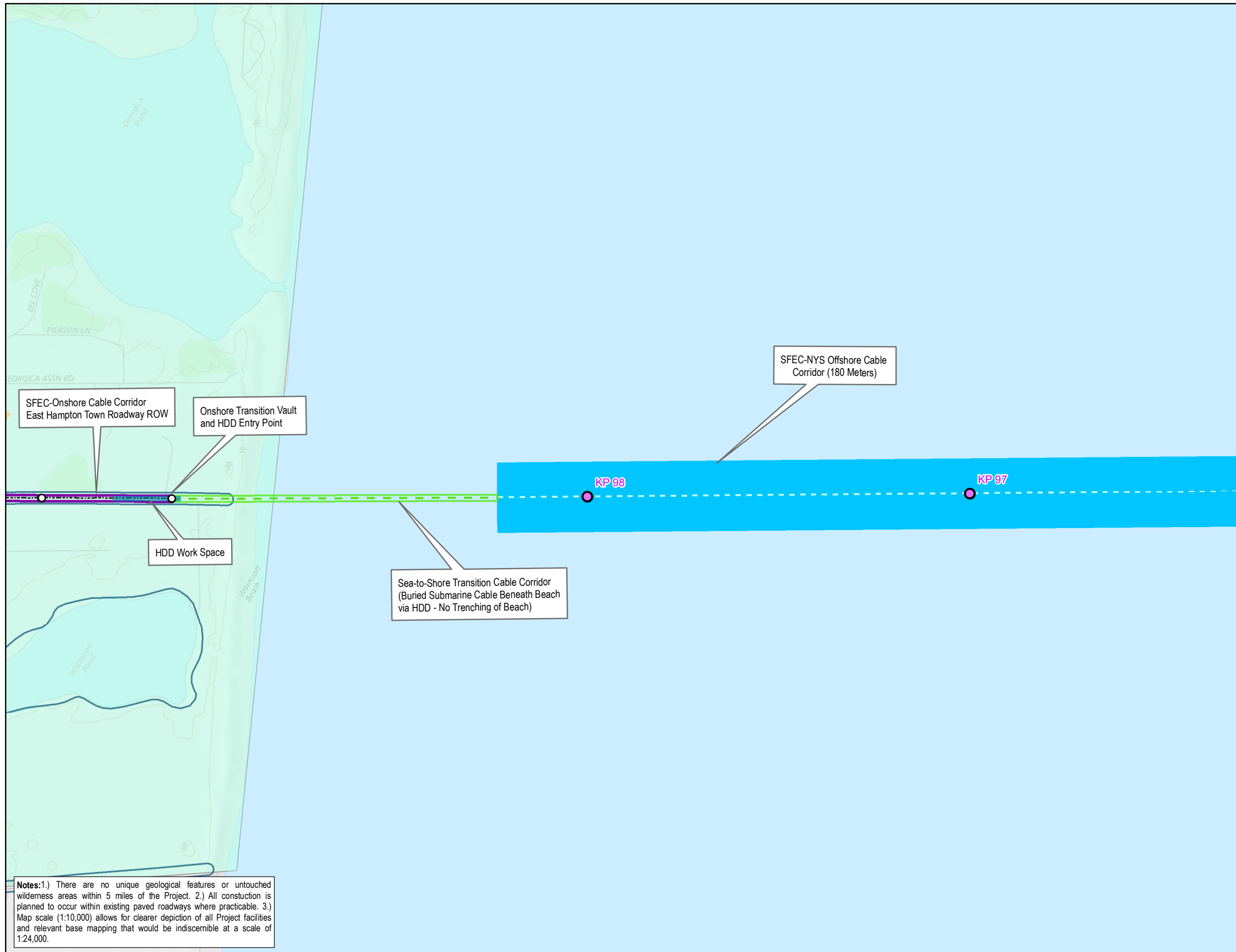


Source
 NRHP-Eligible Resources are from a historical survey by EDR (06/2017). NRHP- Listed Resources are from New York State Office of Parks, Recreations and Historic Preservation (NYSOPRHP), (03/2016), NYSDOT Bicycle Route is from NYSDOT (3/2017), The Scenic Area of Statewide Significance is from NYS GIS Clearing-house (11/2014). Local Parks are from the NYS Office of Cyber Security (1/2005). NYSDEC Lands are from NYSDEC (7/2013). LWRP - Identified Scenic Resource from NYS Department Of State (NYSDOS) (12/2017). NYSDEC Roads and Trails from NYSDEC (1/2006). National Wildlife Refuge from USFWS (12/2017). Archaeologically Sensitive Areas are from the NYSOPRHP Cultural Resources Information System (CRIS) (3/2017). Basemap: "USGS Topo Base Map" displayed via the USGS Topo Map Server.

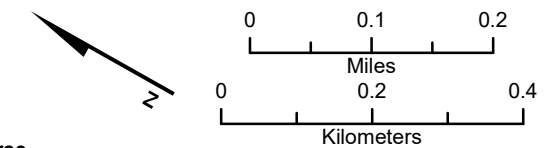


Figure 2.3-1. Location of Facilities on USGS Mapping
 Deepwater Wind
 New York/Rhode Island, US

Notes: 1.) There are no unique geological features or untouched wilderness areas within 5 miles of the Project. 2.) Map scale (1:10,000) allows for clearer depiction of all Project facilities and relevant base mapping that would be indiscernible at a scale of 1:24,000.



- Legend**
- Project Layout**
- Offshore Kilometer Point
 - Manhole
 - SFEC-Onshore Cable Route
 - - - - SFEC-NYS Cable Route
 - - - - Sea-to-Shore Transition Cable Route
 - SFEC-NYS Cable Corridor
 - Sea-to-Shore Transition Cable Corridor
 - Horizontal Directional Drilling (HDD) Work Space
- SFEC-Onshore Cable Corridor**
- East Hampton Town Roadway ROW
- Sensitive Resources**
- NRHP-Listed Resource
 - LWRP-Identified Scenic Resource
 - Scenic Area of Statewide Significance

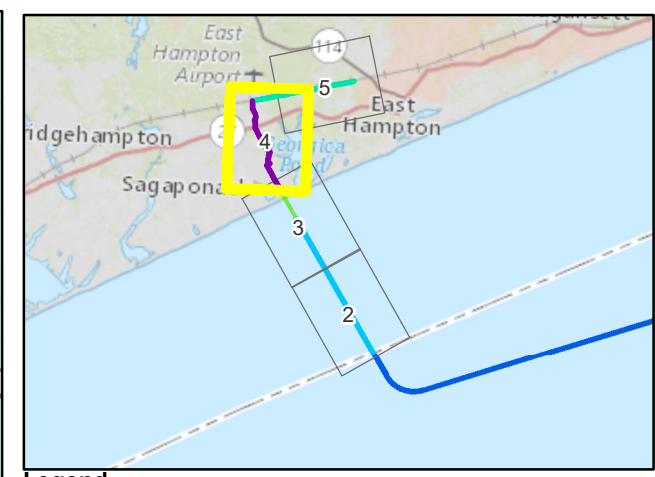
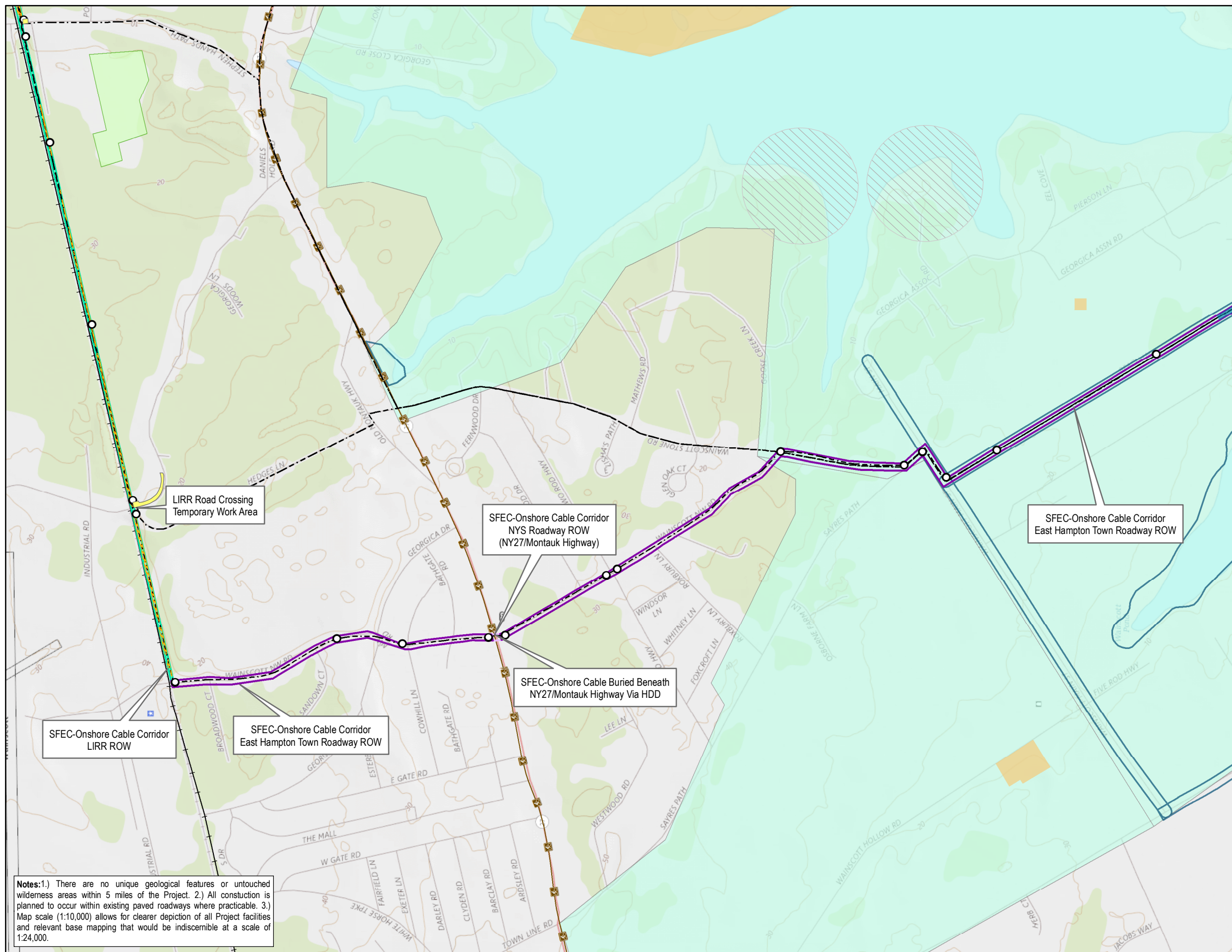


Source
 NRHP-Eligible Resources are from a historical survey by EDR (06/2017). NRHP- Listed Resources are from New York State Office of Parks, Recreations and Historic Preservation (NYSOPRHP), (03/2016), NYSDOT Bicycle Route is from NYSDOT (3/2017), The Scenic Area of Statewide Significance is from NYS GIS Clearing-house (11/2014). Local Parks are from the NYS Office of Cyber Security (1/2005). NYSDEC Lands are from NYSDEC (7/2013). LWRP - Identified Scenic Resource from NYS Department Of State (NYSDOS) (12/2017). NYSDEC Roads and Trails from NYSDEC (1/2006). National Wildlife Refuge from USFWS (12/2017). Archaeologically Sensitive Areas are from the NYSOPRHP Cultural Resources Information System (CRIS) (3/2017). Basemap: "USGS Topo Base Map" displayed via the USGS Topo Map Server.



Figure 2.3-1. Location of Facilities on USGS Mapping
 Deepwater Wind
 New York/Rhode Island, US

Notes: 1.) There are no unique geological features or untouched wilderness areas within 5 miles of the Project. 2.) All construction is planned to occur within existing paved roadways where practicable. 3.) Map scale (1:10,000) allows for clearer depiction of all Project facilities and relevant base mapping that would be indiscernible at a scale of 1:24,000.



Legend

Project Layout

- Manhole
- Railroad
- Horizontal Directional Drilling (HDD) Work Space
- SFEC-Onshore Cable Route
- Yellow box: LIRR Road Crossing Temporary Work Area
- Hatched box: Area of Clearing

SFEC-Onshore Cable Corridor

- Purple box: East Hampton Town Roadway ROW
- Orange box: New York State (NYS) Roadway ROW
- Green box: Long Island Railroad (LIRR) ROW

Sensitive Resources

- Hatched box: Archaeologically Sensitive Area
- Orange line: NYSDOT Bicycle Route
- Green box: Local Park
- Orange box: NRHP-Listed Resource
- Blue box: LWRP-Identified Scenic Resource
- Light blue box: Scenic Area of Statewide Significance

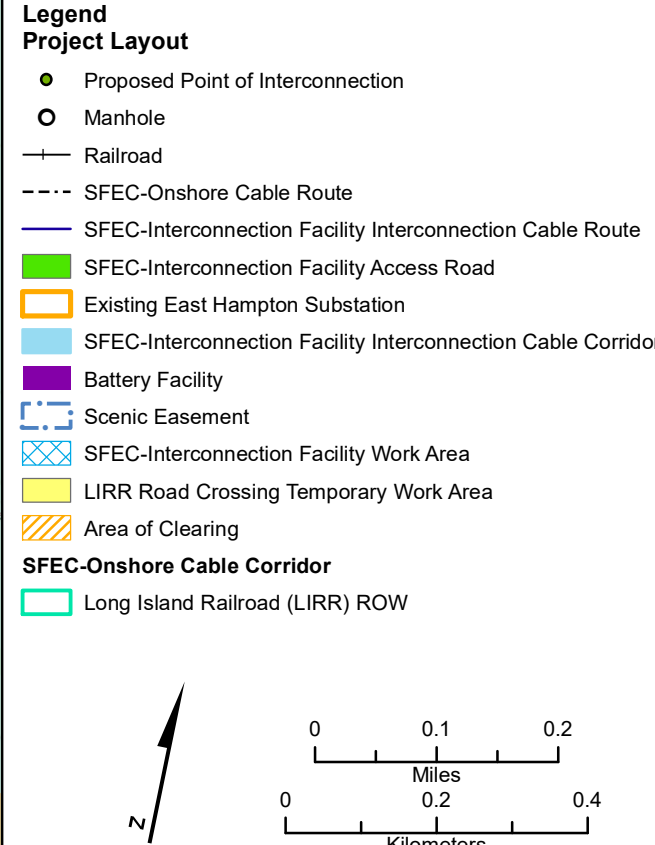
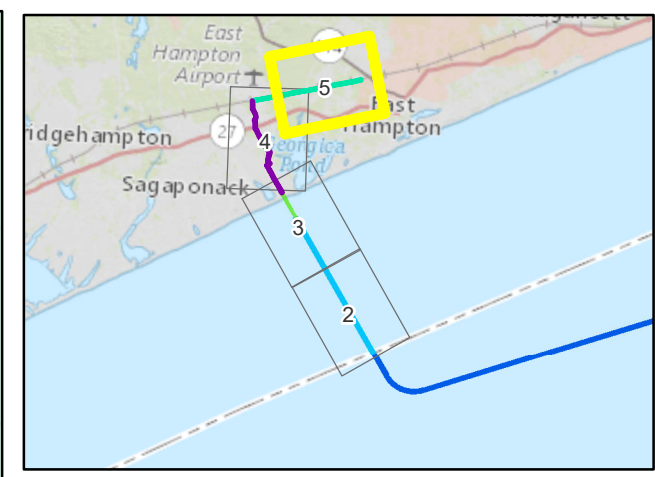
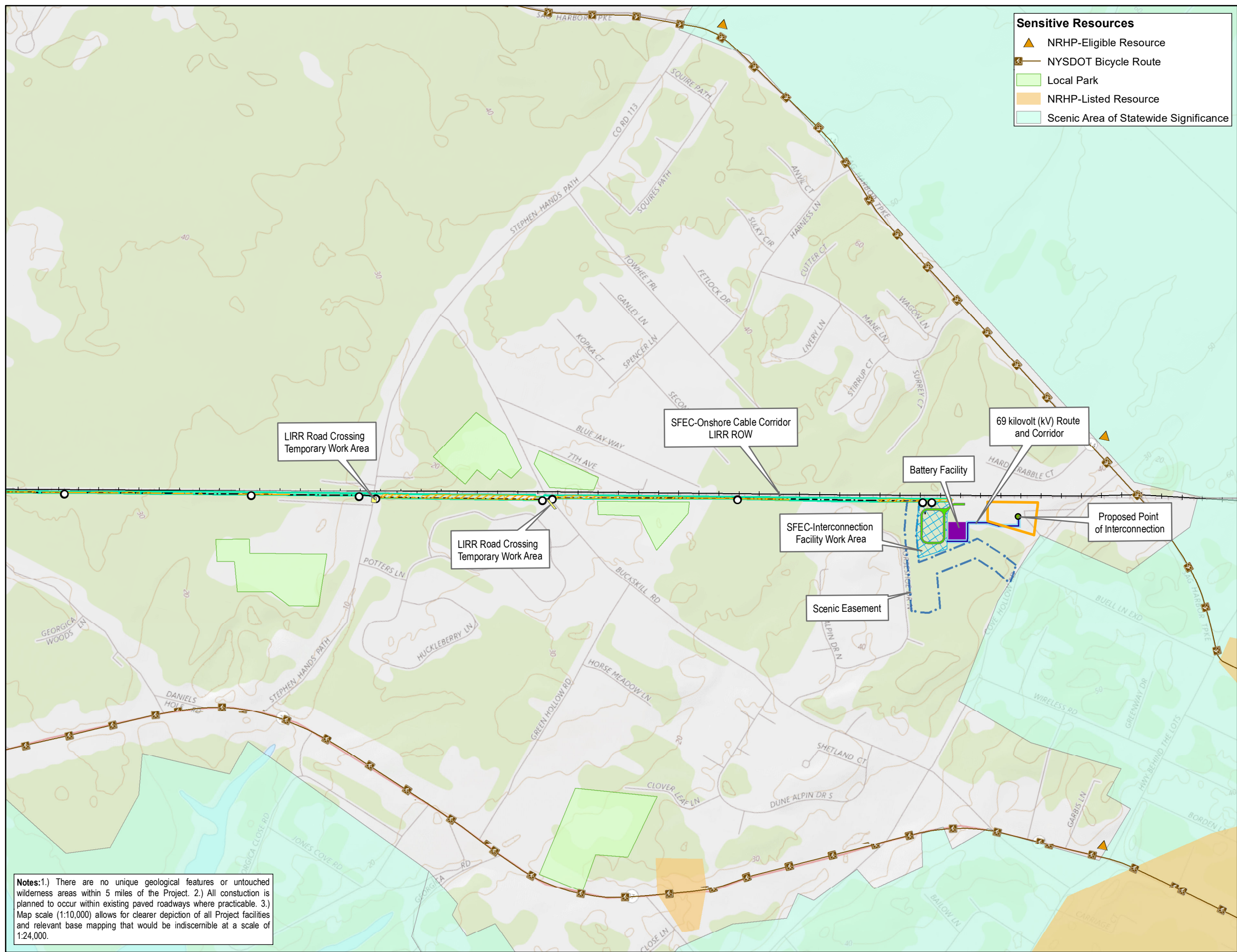
0 0.1 0.2
0 0.2 0.4
Miles
Kilometers

Notes: 1.) There are no unique geological features or untouched wilderness areas within 5 miles of the Project. 2.) All construction is planned to occur within existing paved roadways where practicable. 3.) Map scale (1:10,000) allows for clearer depiction of all Project facilities and relevant base mapping that would be indiscernible at a scale of 1:24,000.

Source
 NRHP-Eligible Resources are from a historical survey by EDR (06/2017). NRHP- Listed Resources are from New York State Office of Parks, Recreation and Historic Preservation (NYSOPRHP), (03/2016), NYSDOT Bicycle Route is from NYSDOT (3/2017), The Scenic Area of Statewide Significance is from NYS GIS Clearinghouse (11/2014). Local Parks are from the NYS Office of Cyber Security (1/2005). NYSDEC Lands are from NYSDEC (7/2013). LWRP - Identified Scenic Resource from NYS Department Of State (NYSDOS) (12/2017). NYSDEC Roads and Trails from NYSDEC (1/2006). National Wildlife Refuge from USFWS (12/2017). Archaeologically Sensitive Areas are from the NYSOPRHP Cultural Resources Information System (CRIS) (3/2017). Basemap: "USGS Topo Base Map" displayed via the USGS Topo Map Server.



Figure 2.3-1. Location of Facilities on USGS Mapping
 Deepwater Wind
 New York/Rhode Island, US



Source
 NRHP-Eligible Resources are from a historical survey by EDR (06/2017). NRHP- Listed Resources are from New York State Office of Parks, Recreations and Historic Preservation (NYSOPRHP), (03/2016), NYSDOT Bicycle Route is from NYSDOT (3/2017), The Scenic Area of Statewide Significance is from NYS GIS Clearing-house (11/2014). Local Parks are from the NYS Office of Cyber Security (1/2005). NYSDEC Lands are from NYSDEC (7/2013). LWRP - Identified Scenic Resource from NYS Department Of State (NYSDOS) (12/2017). NYSDEC Roads and Trails from NYSDEC (1/2006). National Wildlife Refuge from USFWS (12/2017). Archaeologically Sensitive Areas are from the NYSOPRHP Cultural Resources Information System (CRIS) (3/2017). Basemap: "USGS Topo Base Map" displayed via the USGS Topo Map Server.

Notes: 1.) There are no unique geological features or untouched wilderness areas within 5 miles of the Project. 2.) All construction is planned to occur within existing paved roadways where practicable. 3.) Map scale (1:10,000) allows for clearer depiction of all Project facilities and relevant base mapping that would be indiscernible at a scale of 1:24,000.