

TEST REPORT

Little Salmon River Crossing - Pressure Test

Date 6/30/2015



TEST FORM #	FORM TITLE
1.0	TEST DATA LOG
2.0	YIELD PLOT LOG
2.1	YIELD PLOT GRAPH
3.0	LEAK AND/OR STRENGTH TEST LOG
3.1	PRESSURE RECORDER CHARTS
3.2	TEMPERATURE RECORDER CHARTS
4.0	HYDROSTATIC TEST CALCULATIONS

	NAME/TITLE	DATE
PROJECT MANAGER	Brent H. Poirier	6/29/2015
DESIGN COMPLETED BY	Enbridge Gas Engineering	2010
DESIGN APPROVED BY	Bernard Carvel	2010
TEST WITNESSED BY	<i>Michael Yon</i> <i>[Signature]</i>	6/30/15
TEST APPROVED BY	<i>[Signature]</i>	6/30/15



TEST DATA LOG

FORM 1.0

DOCUMENTATION FC NPS 8 12 -Hour Leak Test - River Bore Pipe
 OPERATING REGION/DISTRICT: Enbridge St Lawrence Gas

LOCATION: Little Salmon River Crossing - Brushtion NY	CNTRCT #:
E side of Spring Grove Rd -to- W side of Delancy Ave	PROJECT #: Franklin County Expansion
TEST PRESSURE @ TEST LOCATION:	DRAWING #: Pg 32 - EM&CP
PIPELINE -- CLASS LOCATION:	
DESIGN PRESSURE: 480 psi	
M.A.O.P.: 450 psi	
N.O.P.:	

INSTRUMENTATION				
EQUIPMENT	MANUFACTURER	SERIAL #	LOCATION	RANGE
DEADWEIGHT	<i>Chandler</i>	<i>9907</i>		
PRESSURE RECORDER	<i>Clif Mock</i>	<i>6466</i>		
<i>A</i> TEMP. RECORDER	<i>Barton</i>	<i>111125147012</i>		
<i>D</i> TEMP. RECORDER	<i>Clif Mock</i>	<i>1386</i>		
<i>G</i> TEMP. RECORDER	<i>Foxboro</i>	<i>5235460</i>		
TEST HEADS				

YIELD PLOT SUMMARY			
	PRESSURE	% OF VOLUME OFFSET	% OF SMYS
INITIAL DEVIATION			
FINAL DEVIATION			
MINIMUM TEST PRESSURE			
MAXIMUM TEST PRESSURE			

N/A

LEAK TEST SUMMARY		
	PIPE TEMPERATURE	PRESSURE
INITIAL	<i>58</i>	<i>925</i>
FINAL	<i>60</i>	<i>931</i>

PRESSURE VARIATION:

REMARKS:



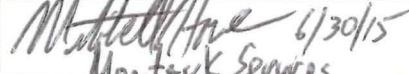

LEAK AND/OR STRENGTH TEST LOG

FORM 3.0

DATE: 30-Jun-15	MAIN: DIAMETER: 8"	PROJECT: FC Project Expansion
LOCATION: Brushton NY	WALL THICKNESS: 0.322	
E side of Spring Grove Rd	GRADE/SPEC.: X-52	SECTION: Little Salmon River Bore
REFERENCE: PLATE #:	CONSTRUCTION DRAWING #:	Pg 32

LIMITS:

TIME (hrs)	PRESSURE (psig)	WATER TEMP. (°F) <i>Pipe</i>	AIR TEMP. (°F)	PIPE/GRND TEMP. (°F) <i>Ground</i>	COMMENTS
6:00am	925	58	54	64	Start 12hr Test
6:30am	925	58	54	64	
7:00am	925	58	54	63	
7:30am	925	58	55	62	
8:00am	925	58	56	62	
8:30am	925	58	58	62	
9:00am	926	58	60	62	
9:30am	927	58	62	61	
10:00am	928	58	64	60	
10:30am	929	58	66	60	
11:00am	930	58	66	60	
11:30am	932	58	69	60	
12:00pm	933	58	70	60	
12:30pm	933	58	69	59	
1:00pm	934	58	69	59	
1:30pm	934	58	69	58	
2:00pm	934	58	69	58	
2:30pm	934	58	70	60	
3:00pm	934	58	69	60	
3:30pm	934	58	68	60	
4:00pm	933	58	66	60	
4:30pm	933	58	64	60	
5:00pm	932	58	62	61	
5:30pm	931	59	61	61	
6:00pm	931	60	61	60	End 12hr test

 6/30/15
 Non Leak Services
 SLG REPRESENTATIVE:  6/30/2015

TEST GOOD JEREMY KENNAL
 NYSDPS 6/30/15 Brushton

Graphic Controls LLC

12 hr PSC Test

CHART NO. MC MP-3000

METER 6466

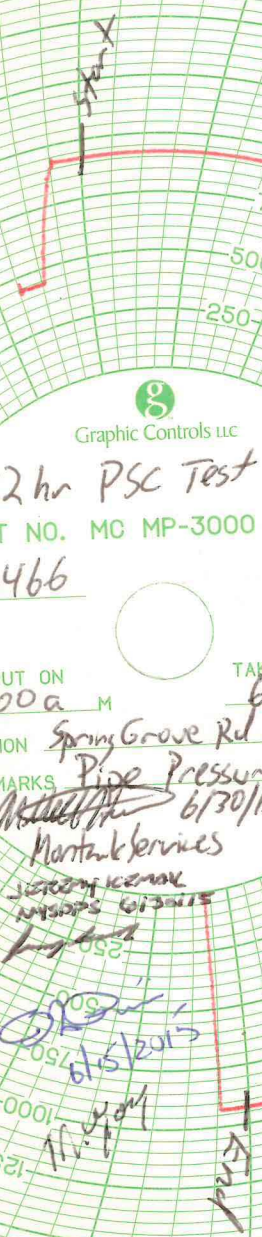
CHART PUT ON 6:00a M TAKEN OFF 6:00p M

LOCATION Spring Grove Rd Bore Pipe

REMARKS Pipe Pressure
6/30/15

Mantak Services
jeremy kennedy
6/30/15

Handwritten notes and signatures
6/30/15
Handwritten initials



PRINTED IN U.S.A.

6 PM



Graphic Controls LLC

12hr PSC Test

CHART NO. MC MT-150F

METER 1386

CHART PUT ON 6:00 a.m.

TAKEN OFF 6:00 p.m.

LOCATION Spring Grove Rd Bare Pipe

REMARKS Pipe Temp

Added to 6/30/15
Mantak Services

Jeremy Kiem
NYSOS CONSULTANTS

[Signature]
M. 11-10-15

6/30/15

Start

End



Graphic Controls LLC

12 Hr PSC Test

CHART NO. MC MT-150F

METER 5235460

CHART PUT ON 6:00 A.M.

TAKEN OFF 6:00 P.M.

LOCATION Spring Grove Rd Bore Pipe

REMARKS Ground Temp
Multi-Staffed 6/30/15
Maintenance

Jeremy Kenna
6/30/15

[Signature] 6/30/15
M. Gof

Start

End

PRINTED IN U.S.A.

6 PM 7 8

10

2

3

4

5

Graphic Controls LLC

12 hr PSL Test
CHART NO. MC MT-150F
METER 111125147012

CHART PUT ON
6:00 am M

TAKEN OFF
6:00 P M

LOCATION Spring Grove Rd Bare Pipe
REMARKS Ambient Temp
Mantak Services 6/30/15

SEVEN REMARKS
MANTAK SERVICES 6/30/15

[Handwritten signature]
6/30/2015

M. 407

[Handwritten mark]

PRINTED IN U.S.A.

6 PM

5

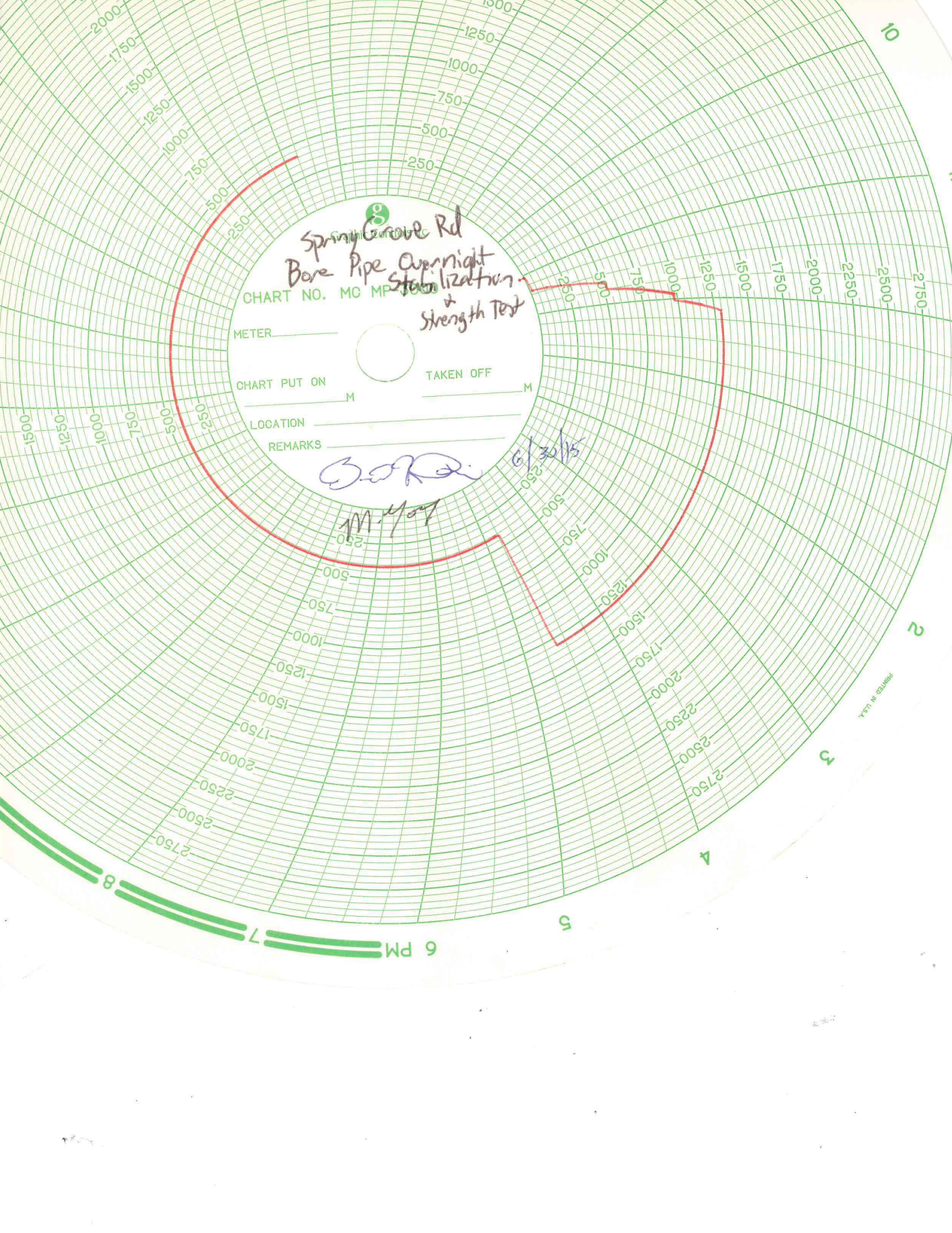
4

3

2

1

6



Spring Grove Rd
Bore Pipe Overnight
Stabilization
&
Strength Test

CHART NO. MC MP-1000

METER _____

CHART PUT ON _____ M

TAKEN OFF _____ M

LOCATION _____

REMARKS _____

Bores

6/30/15

M. J. J.

PRINTED IN U.S.A.

6 PM 7 8



203 EGEL AVENUE • MIDDLESEX, NEW JERSEY 08846

CERTIFICATE OF CALIBRATION

DATE CALIBRATED: **05/04/15**

INSTRUMENT CALIBRATED: **12" Clif Mock Pressure Recorder**

INDICATED RANGE: **0-3000 psi**

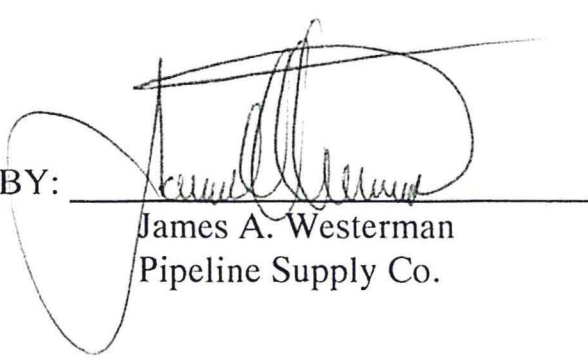
ACCURACY: **0.5%**

SERIAL NUMBER: **6466**

ALL STANDARDS DIRECTLY TRACEABLE TO NATIONAL
INSTITUTE OF STANDARDS & TECHNOLOGIES TEST # P7067 &
TEST # 212.31/18094, PROCEDURE WI-0001

TYPE OF STANDARD USED TO CALIBRATE: CHANDLER
ENGINEERING DEAD WEIGHT TESTER MODEL 02-001Q-B-T, S/N
7858.

CALIBRATED BY: _____


James A. Westerman
Pipeline Supply Co.



203 EGEL AVENUE • MIDDLESEX, NEW JERSEY 08846

CERTIFICATE OF CALIBRATION

DATE CALIBRATED: **05/04/15**

INSTRUMENT CALIBRATED: **Chandler Eng. Dead Weight Gauge**

INDICATED RANGE: **50-3000 psi**

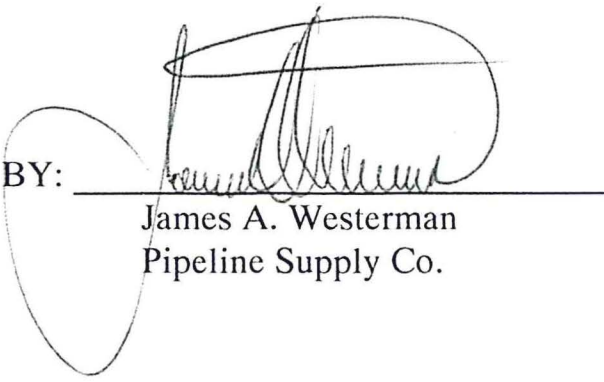
ACCURACY: **0.05%**

SERIAL NUMBER: **9907**

ALL STANDARDS DIRECTLY TRACEABLE TO NATIONAL
INSTITUTE OF STANDARDS & TECHNOLOGIES TEST # P7067 &
TEST # 212.31/18094, PROCEDURE WI-0001

TYPE OF STANDARD USED TO CALIBRATE: CHANDLER
ENGINEERING DEAD WEIGHT TESTER MODEL 02-001Q-B-T, S/N
7858.

CALIBRATED BY: _____


James A. Westerman
Pipeline Supply Co.



203 EGEL AVENUE • MIDDLESEX, NEW JERSEY 08846

CERTIFICATE OF CALIBRATION

DATE CALIBRATED: **05/04/15**

INSTRUMENT CALIBRATED: **Clif Mock Temperature Recorder**

INDICATED RANGE: **0 – 150° Fahrenheit**

ACCURACY: **1.0 %**

SERIAL NUMBER: **1386**

CALIBRATED IN ACCORDANCE WITH MIL STD. 45662A & ANSI Z-540-1994 TRACEABLE TO NIST # 27620.

TYPE OF STANDARD USED TO CALIBRATE: TECHNE TECAL 140S TEMPERATURE CALIBRATOR S/N 87062-4, USING TEST PROCEDURE #10103 TRACABLE TO NIST TEST #46883, #46897.

CALIBRATED BY:

A handwritten signature in black ink, appearing to read "Peter P. Walters", written over a horizontal line.

Peter P. Walters
Pipeline Supply Co.



203 EGEL AVENUE • MIDDLESEX, NEW JERSEY 08846

CERTIFICATE OF CALIBRATION

DATE CALIBRATED: **05/04/15**

INSTRUMENT CALIBRATED: **Barton Temperature Recorder**

INDICATED RANGE: **0 – 150° Fahrenheit**

ACCURACY: **1.0 %**

SERIAL NUMBER: **111125147012**

CALIBRATED IN ACCORDANCE WITH MIL STD. 45662A & ANSI Z-540-1994 TRACEABLE TO NIST # 27620.

TYPE OF STANDARD USED TO CALIBRATE: TECHNE TECAL 140S TEMPERATURE CALIBRATOR S/N 87062-4, USING TEST PROCEDURE #10103 TRACABLE TO NIST TEST #46883, #46897.

CALIBRATED BY:

A handwritten signature in black ink that reads "Peter P. Walters". The signature is written in a cursive style and is positioned above a horizontal line.

Peter P. Walters
Pipeline Supply Co.



203 EGEL AVENUE • MIDDLESEX, NEW JERSEY 08846

CERTIFICATE OF CALIBRATION

DATE CALIBRATED: **05/04/15**

INSTRUMENT CALIBRATED: **12" Foxboro Temperature Recorder**

INDICATED RANGE: **0 – 150 deg. F**

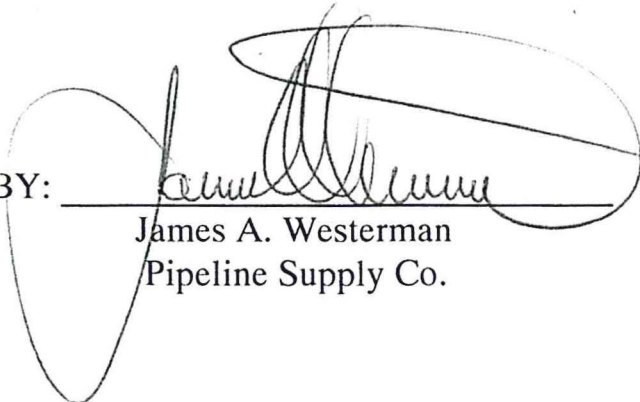
ACCURACY: **1.0 %**

SERIAL NUMBER: **5235460**

CALIBRATED IN ACCORDANCE WITH MIL STD. 45662A & ANSI Z-540-1994 TRACEABLE TO NIST # 27620.

TYPE OF STANDARD USED TO CALIBRATE: TECHNE TECAL 140S-TEMPERATURE CALIBRATOR S/N 87062-4, USING TEST PROCEDURE #10103 TRACABLE TO NIST TEST #46883, #46897.

CALIBRATED BY: _____


James A. Westerman
Pipeline Supply Co.

TRITON SYSTEMS, LLC.

84 A Johnson Avenue
Hackensack, New Jersey 07601
(210) 525-0557 FAX (201) 525-1787

CALIBRATION CERTIFICATE

DATE CALIBRATED: May 27, 2015

INDICATED RANGE: 0-3,000 psi

ACCURACY 1/4 OF 1 %

TYPE OF INSTRUMENT

CALIBRATED : Crystal Test Gauge

SERIAL NUMBER: 257730

TYPE OF STANDARD USED TO CALIBRATE:

**ALL STANDARDS DIRECTLY TRACEABLE TO NATIONAL INSTITUTE OF
STANDARDS AND TECHNOLOGIES TEST NO: P7067 & 212.31/18904**

Mitchell Howe

INSPECTOR

Mitchell Howe

(PRINT NAME)