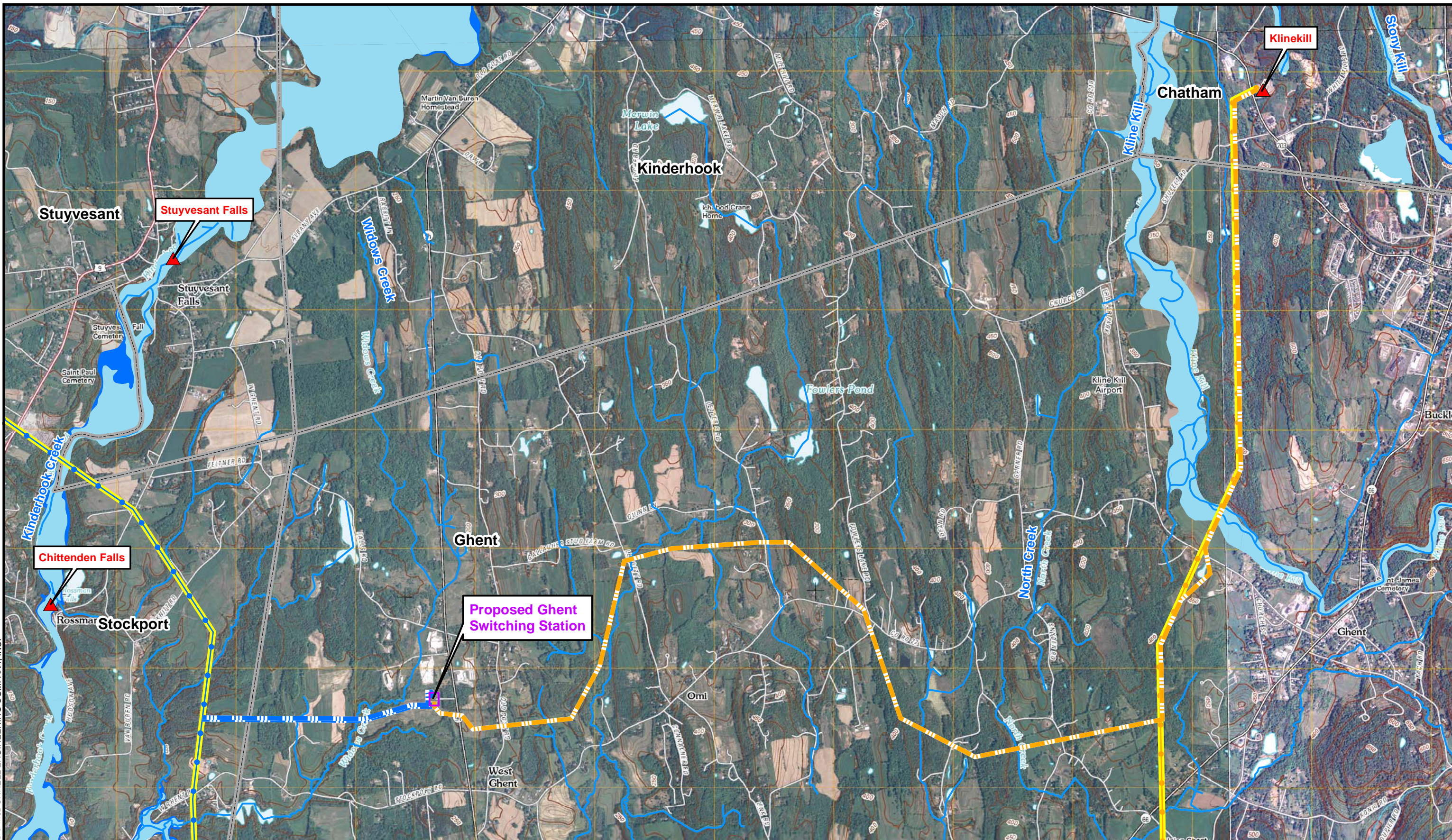
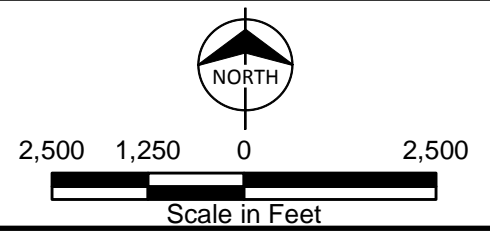


Path: V:\NYSEG\68615\_Klinekill\_Vaiken\GIS\DataFiles\ArcDocs\Application\_Maps\Revised\Figure\_4-2\_Floodplains\_11x17.mxd dwerth 8/15/2012  
 COPYRIGHT © 2012 BURNS & McDONNELL ENGINEERING COMPANY, INC.



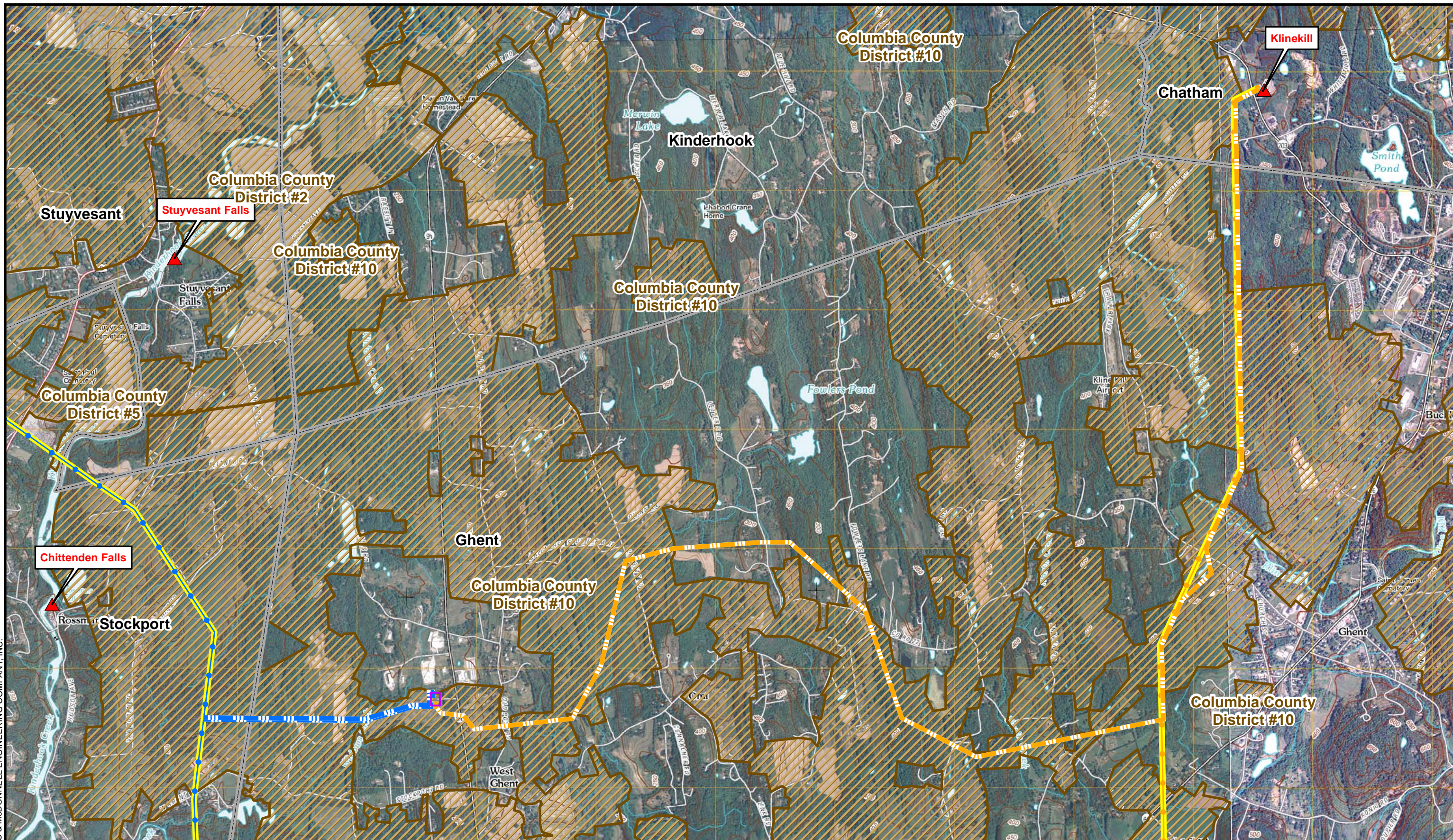
Existing Substation	Proposed Circuit #726	<b>Floodplain</b>	100-yr Flood Zone
Ghent Switching Station	Proposed Extension of National Grid 115-kV Trunk #15		500-yr Flood Zone
Town Boundary	Existing NYSEG Transmission Line		Streams
	Existing National Grid Transmission Line		



**Columbia County Transmission Project**  
**Figure 4-2**  
**FEMA Floodplains**

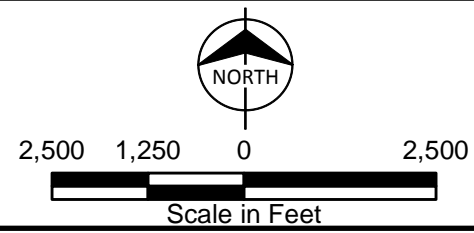
Source: NY CSCIC, Energy Velocity, USGS 1:24k Topographic Quadrangles, and Burns & McDonnell Engineering

Path: V:\NYSEG\68615\_Klinekill\_Va\GIS\DataFiles\ArcDocs\Application\_Maps\Revised\Figure\_4-3\_AgDistricts\_11x17.mxd dwerth 8/15/2012  
COPYRIGHT © 2012 BURNS & McDONNELL ENGINEERING COMPANY, INC.



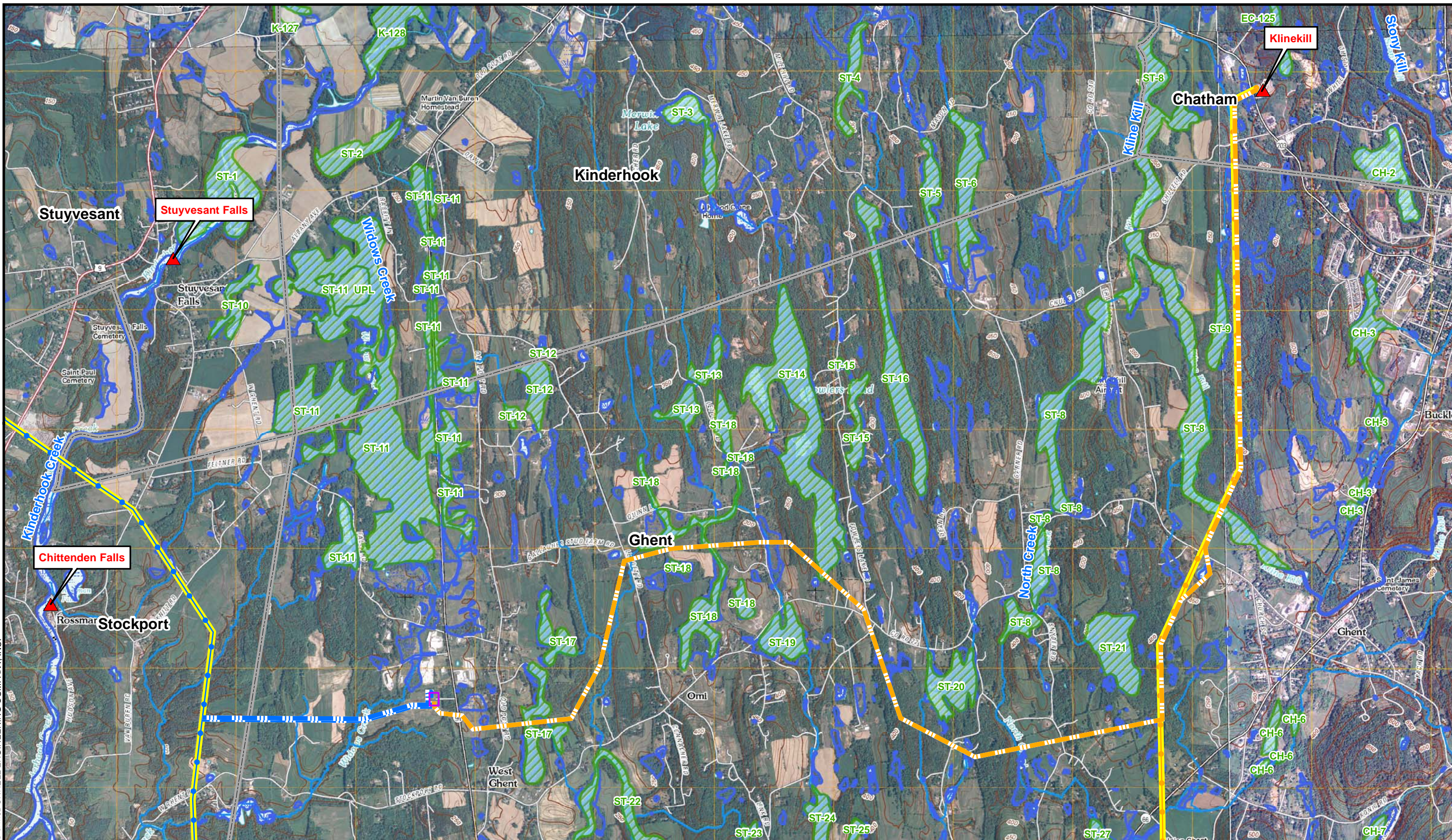
- ▲ Existing Substation
- Ghent Switching Station
- Existing NYSEG Transmission Line
- Existing National Grid Transmission Line
- Proposed Circuit #726
- Proposed Extension of National Grid 115-kV Trunk #15

- Town Boundary
- ▨ Agricultural Districts

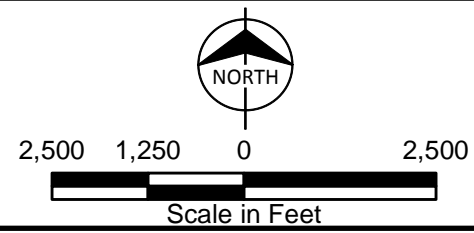


**Columbia County Transmission Project**  
**Figure 4-3**  
**Agricultural Districts**

Path: V:\NYSEG\68615\_Klinekill\_Vaiken\GIS\DataFiles\ArcDocs\Application\_Maps\Revised\Figure\_4-4\_Wetlands\_11x17.mxd dwerth 8/15/2012  
 COPYRIGHT © 2012 BURNS & McDONNELL ENGINEERING COMPANY, INC.



- Existing Substation
- Ghent Switching Station
- Town Boundary
- Proposed Circuit #726
- Proposed Extension of National Grid 115-kV Trunk #15
- Existing NYSEG Transmission Line
- Existing National Grid Transmission Line
- NWI Wetlands
- NYSDEC Wetlands
- Streams

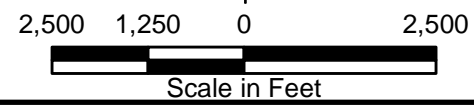


**Columbia County Transmission Project**  
**Figure 4-4**  
**NYSDEC Wetlands and**  
**USFWS NWI Wetlands**

Path: V:\NYSEG68615\_Klinekill\_VaIn\GIS\DataFiles\ArcDocs\Application\_Maps\Revised\Figure\_4-5\_Streams.mxd dwerth 8/15/2012  
 COPYRIGHT © 2012 BURNS & McDONNELL ENGINEERING COMPANY, INC.



- ▲ Existing Substation
- Ghent Switching Station
- Town Boundary
- NYSDEC Waterbodies
- Proposed Circuit #726
- Proposed Extension of National Grid 115-kV Trunk #15
- Existing NYSEG Transmission Line
- Existing National Grid Transmission Line



**Columbia County Transmission Project**  
**Figure 4-5**  
**NYSDEC**  
**Mapped Surface Waterbodies**