

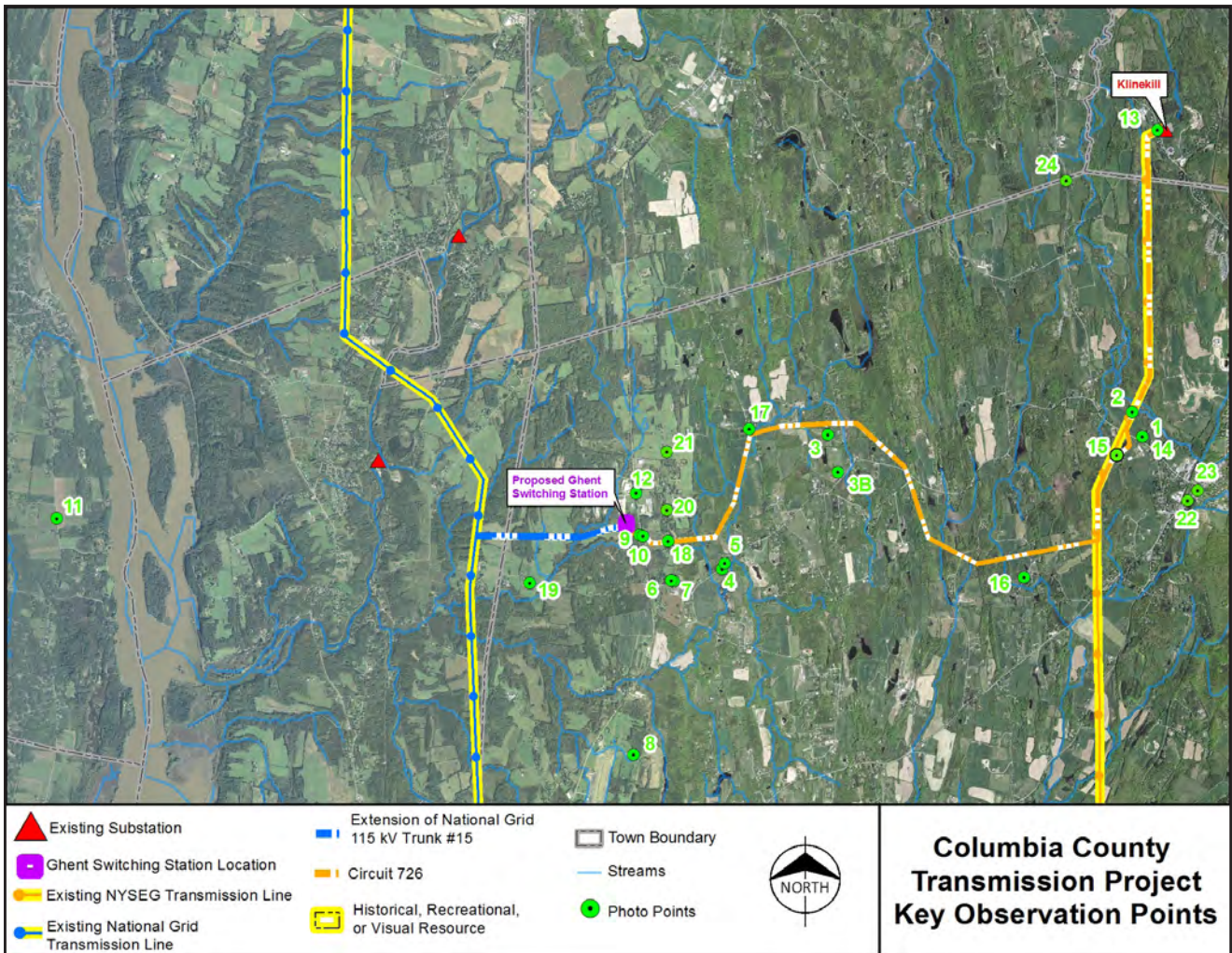
Columbia County Transmission Project
Visual Impact Analysis

Appendix A
Viewshed Analysis

Place Holder for Oversized Map

Columbia County Transmission Project
Visual Impact Analysis

Appendix B
Photolog



Key Observation Point - Key Map

*KOP's 13-19 were taken by the New York State Department of Public Service

KOP 1 - Siegel Kline Kill Conservation Area Looking Northwest from Parking Area



Camera: Canon EOS 10D
Focal Length: 24mm
Date: 09/05/12
Time Stamp: 7:55AM

IMG_3391.JPG



Camera: Canon EOS 10D
Focal Length: 24MM
Date: 09/05/12
Time Stamp: 7:55AM

IMG_3393.JPG

KOP 1 - Siegel Kline Kill Conservation Area Looking Northwest from Parking Area



Camera: Canon EOS 10D
Focal Length: 24mm
Date: 9/05/12
Time Stamp: 7:55AM

IMG_3394.JPG



Camera: Canon EOS 10D
Focal Length: 24mm
Date: 09/06/12
Time Stamp: 9:50AM

IMG_3470.JPG

KOP 2 - Siegel Kline Kill Conservation Area Looking North Along ROW



IMG_3471.JPG



IMG_3474.JPG

KOP 3 - Art OMI International Arts Center Guesthouse



Camera: Canon EOS 10D
Focal Length: 24mm
Date: 09/05/12
Time Stamp: 8:20AM

IMG_3396.JPG



Camera: Canon EOS 10D
Focal Length: 24mm
Date: 09/05/12
Time Stamp: 8:20AM

IMG_3399.JPG

KOP 3 - Art OMI International Arts Center Guesthouse



IMG_3402.JPG



IMG_3403.JPG

KOP 3b - Art OMI International Arts Visitors Center



Camera: Canon EOS 10D
Focal Length: 24mm
Date: 09/06/12
Time Stamp: 10:23AM

IMG_3486.JPG



Camera: Canon EOS 10D
Focal Length: 24mm
Date: 09/06/12
Time Stamp: 10:23AM

IMG_3488.JPG

KOP 3b - Art OMI International Arts Visitor Center



IMG_3511.JPG



IMG_3513.JPG

KOP 3b - Art OMI International Arts Visitor Center



Camera: Casio EX H20G
Focal Length: 24mm
Date: 11/06/12

CIMG6764.JPG



Camera: Casio EX H20G
Focal Length: 24mm
Date: 11/06/12

CIMG6767.JPG

KOP 4 - Van Valkenburgh-Isbister Farm Looking North from Farmhouse



IMG_3409.JPG



IMG_3411.JPG

KOP 4 - Van Valkenburgh-Isbister Farm Looking North From Farmhouse



IMG_3414.JPG



IMG_3415.JPG

KOP 5 - Van Valkenburgh-Isbister Farm Looking North from Barn



IMG_3418.JPG



IMG_3419.JPG

KOP 5 - Van Valkenburgh-Isbister Farm Looking North from Barn



IMG_3420.JPG



IMG_3422.JPG

KOP 6 - West Ghent Recreation Facility Looking Northeast



IMG_3424.JPG



IMG_3425.JPG

KOP 7 - West Ghent Cemetery Looking North



Camera: Canon EOS 10D
Focal Length: 24mm
Date: 09/05/12
Time Stamp: 11:21AM

IMG_3426.JPG



Camera: Canon EOS 10D
Focal Length: 24mm
Date: 09/05/12
Time Stamp: 11:21AM

IMG_3428.JPG

KOP 7 - West Ghent Cemetery Looking North



Camera: Casio EX H20G
Focal Length: 24mm
Date: 11/06/12

CIMG6773.JPG



Camera: Casio EX H20G
Focal Length: 24mm
Date: 11/06/12

CIMG6772.JPG

KOP 8 - Public Golf Course Looking North



IMG_3432.JPG



IMG_3434.JPG

KOP 9 - Route 9H Looking West from Road Corridor



IMG_3439.JPG



IMG_3440.JPG

KOP 9 - Route 9H Looking West from Road Corridor



Camera: Canon EOS 10D
Focal Length: 24mm
Date: 09/05/12
Time Stamp: 2:30PM

IMG_3441.JPG



Camera: Canon EOS 10D
Focal Length: 24mm
Date: 09/05/12
Time Stamp: 2:30PM

IMG_3442.JPG

KOP 10 - Route 9H Looking East from Road Corridor



Camera: Canon EOS 10D
Focal Length: 24mm
Date: 09/05/12
Time Stamp: 2:33PM

IMG_3444.JPG



Camera: Canon EOS 10D
Focal Length: 24mm
Date: 09/05/12
Time Stamp: 2:33PM

IMG_3445.JPG

KOP 11 - Route 385/ Lampman Cemetery Looking East over Hudson



Camera: Canon EOS 10D
Focal Length: 24mm
Date: 09/05/12
Time Stamp: 3:55PM

IMG_3455.JPG



Camera: Canon EOS 10D
Focal Length: 24mm
Date: 09/05/12
Time Stamp: 3:56PM

IMG_3456.JPG

KOP 11 - Route 385/ Lampman Cemetery Looking East over Hudson



Camera: Canon EOS 10D
Focal Length: 24mm
Date: 09/05/12
Time Stamp: 3:56PM

IMG_3457.JPG



Camera: Canon EOS 10D
Focal Length: 24mm
Date: 09/05/12
Time Stamp: 3:56PM

IMG_3458.JPG

KOP 12 - Route 9H Looking South



IMG_3523.JPG



IMG_3527.JPG

KOP 12 - Route 9H Looking South



Camera: Canon EOS 10D
Focal Length: 50mm
Date: 09/06/12
Time Stamp: 11:04AM

IMG_3528.JPG



Camera: Canon EOS 10D
Focal Length: 24mm
Date: 09/06/12
Time Stamp: 11:06AM

IMG_3529.JPG

KOP 13 - Route 203 Looking South



691.JPG

KOP 14 - Siegel Kline Kill Conservation Area Looking Northwest from Parking Area



692.JPG

KOP 15 - Siegel Kline Kill Conservation Area Looking Northeast from Trail



698.JPG

KOP 16 - 142 Waltermire Road Looking North



DSC_1127.JPG

KOP 16 - 142 Waltermire Road Looking North



Camera: Casio EX H20G
Focal Length: 24mm
Date: 11/06/12

CIMG6753.JPG



Camera: Casio EX H20G
Focal Length: 24mm
Date: 11/06/12

CIMG6760.JPG

KOP 17 - Leggett Road at Gallagher Stud Farm Looking South



Camera: Nikon D200
Focal Length: 35mm
Date: 09/24/12
Time Stamp: 9:31AM

003.JPG

KOP 18 - 349 Old Post Road Looking West



Camera: Nikon D200
Focal Length: 34mm
Date: 09/24/12
Time Stamp: 9:38AM

008.JPG

KOP 18 - 349 Old Post Road Looking West



CIMG6778.JPG

KOP 19 - Stockport Road Looking North



714.JPG

KOP 20 - 397 Old Post Road Looking Southwest



Camera: Casio EX H20G
Focal Length: 24mm
Date: 11/06/12

CIMG6781.JPG



Camera: Casio EX H20G
Focal Length: 24mm
Date: 11/06/12

CIMG6783.JPG

KOP 21 - 489 Old Post Road Looking East



CIMG6803.JPG



CIMG6801.JPG

KOP 22 - 2268 Route 66 in Ghent Looking West



CIMG6745.JPG



CIMG6749.JPG

KOP 23 - Looking West from the Christ Evangelical Church on Rt. 66 in Ghent



CIMG6743.JPG



CIMG6741.JPG

KOP 24 -115 Route 21B Looking East



Camera: Casio EX H20G
Focal Length: 24mm
Date: 11/06/12

CIMG6726.JPG



Camera: Casio EX H20G
Focal Length: 24mm
Date: 11/06/12

CIMG6729.JPG

Columbia County Transmission Project
Visual Impact Analysis

Appendix C
Scenic Quality Field Inventory
Worksheets

Lat 42° 26' 06.342" N
 Long 73° 34' 33.479" W

NEW YORK STATE ELECTRIC AND GAS CORPORATION
 COLUMBIA COUNTY TRANSMISSION PROJECT

SCENIC QUALITY FIELD INVENTORY	Date:	9/5/2012
	Weather:	68° Partly Cloudy
	Observation Point:	KOP#1 - Klinekill Conservation Area
	Photo ID:	3391-3395 + 3464-3470
	Scenic Quality Rating Unit:	B N/A

1. EVALUATOR NAMES: Christian Lynn + Heidi Childs

2. LANDSCAPE CHARACTER

	a. Landform / Water	b. Vegetation	c. Structure (General)
FORM	flat, smooth	mowed field in foreground dominant tree line background	Sharp, clean - or transmission Clean + smooth
LINE	subtle, smooth	field edges Strong tree line	horizontal, vertical, + diagonals
COLOR	See vegetation →	Varied range of greens light foreground / field dark green background	grays + tans
TEXTURE	See vegetation →	tight, repetitive foreground blotchy irregularly textured background	smooth

3. NARRATIVE

Long view from visitor's parking area. An approximate 40 ACRE open field is surrounded on three sides by mature trees and the long southern side is lined by a rural rolling highway. A 60-70' transmission line bisects the entire view horizontally.

4. SCORE

	High	Medium	Low	Explanation or Rationale	SCENIC QUALITY CLASSIFICATION
LANDFORM	5	3 (2)	1		
VEGETATION	5	3 (3)	1		<input checked="" type="checkbox"/> B. 12-18
WATER	5	3	0		<input type="checkbox"/> C. 11 OR LESS
COLOR	5	3 (3)	1		
ADJACENT SCENERY	5 (4)	3	0		
SCARCITY	5	3 (3)	1		
CULTURAL MODIFICATION	5+	0	-4	Road + TRANSMISSION	
TOTAL	+	+	=	(15)	

42° 20' 04.342" N Lat
73° 31' 33.479" W

**NEW YORK STATE ELECTRIC AND GAS CORPORATION
COLUMBIA COUNTY TRANSMISSION PROJECT**

SCENIC QUALITY FIELD INVENTORY	Date:	9/5/2012
	Weather:	70° Mostly Cloudy
	Observation Point:	KOP#2 Kingskill ROW
	Photo ID:	3471-3476
	Scenic Quality Rating Unit:	N/A

1. EVALUATOR NAMES: Christian Lynn + Heidi Childs

2. LANDSCAPE CHARACTER

	a. Landform / Water	b. Vegetation	c. Structure (General)
FORM	Consistently sloping topography	tall on corridor edges scrub/shrub in ROW	60' vert. dual wood transmission posts - angular + architectural
LINE	Short horizontals	jagged + irregular becoming more smooth towards background	vertical + horizontal linear transmission lines
COLOR	See Vegetation	Strong yellows, tans and greens in foreground blending to dark green in background	tans, reds, + grays
TEXTURE	See Vegetation	Sporadic + irregular in foreground transitioning to a smooth background	smooth, solid, simple

3. NARRATIVE

Long linear ROW corridor gently climbing topography towards the North. The approximate 150' Corridor is lined w/ 60'-80' deciduous and some evergreen trees. The 60' dual post wood transmission towers bisect the corridor. The towers are thin and are in scale w/ the adjacent vegetation.

4. SCORE

	High	Medium	Low	Explanation or Rationale	SCENIC QUALITY CLASSIFICATION
LANDFORM	5	(3)	1		
VEGETATION	5	3	(2) 1		<input type="checkbox"/> B. 12-18
WATER	5	3	(0)		<input checked="" type="checkbox"/> C. 11 OR LESS
COLOR	5	(3)	1		
ADJACENT SCENERY	5	(4) 3	0	Trails + Natural Area	
SCARCITY	5	3	(1)		
CULTURAL MODIFICATION	5+	0	(-3) -4		
TOTAL	+	+	=	9	

42° 20' 08.395" N Lat
73° 40' 25.450" Westing

NEW YORK STATE ELECTRIC AND GAS CORPORATION
COLUMBIA COUNTY TRANSMISSION PROJECT

SCENIC QUALITY FIELD INVENTORY	Date:	9/5/2012
	Weather:	74° Mostly Sunny
	Observation Point:	KOP# 3
	Photo ID:	3396-3407
	Scenic Quality Rating Unit:	N/A

1. EVALUATOR NAMES: Christian Lynn + Heidi Childs

2. LANDSCAPE CHARACTER

	a. Landform / Water	b. Vegetation	c. Structure (General)
FORM	Sloping, mounded	Tree massing (approx 50' ht) in background, sporadically landscaped front yard (shrubs + perennials)	Residential Buildings Rigid architecture
LINE	Soft, curvilinear	Jagged tree line edge linear mowed outlets in yard; line between maintained lawn	Angular, hard
COLOR	See Vegetation	light grass foreground mix colored perennials dark deciduous tree background	beige/white siding brown roof dark gray
TEXTURE	See Vegetation	Smooth lawn texture coarse texture on shrubs Patchy inconsistent texture on background (tree line)	Road-fine linear repeated patterns

3. NARRATIVE

Looking uphill towards the Art OMI Cultural Center guesthouse the curvilinear drive winds through the front yard leading to the houses + parking area. The areas along the drive + adjacent to the house are maintained lawn w/ some landscaped beds around the residences. There is a significant massing of trees running behind the residences, creating a 40'-50' vertical backdrop.

4. SCORE

	High	Medium	Low	Explanation or Rationale	SCENIC QUALITY CLASSIFICATION
LANDFORM	5	(3)	1		
VEGETATION	5	(4)	3	Plantings	
WATER	5	3	(0)		
COLOR	5	(3)	1		
ADJACENT SCENERY	5	(3)	0		
SCARCITY	5	(3)	1		
CULTURAL MODIFICATION	5+	(2) 0	-4	Well Maintained Homes	
TOTAL		+	+	=	(18)

Lat 42.371323
 Long -73.672208

**NEW YORK STATE ELECTRIC AND GAS CORPORATION
 COLUMBIA COUNTY TRANSMISSION PROJECT**

SCENIC QUALITY FIELD INVENTORY	Date:	9/6/2012
	Weather:	68° Partly Cloudy
	Observation Point:	KOP# 36 - Art OMI Visitors Center
	Photo ID:	3483-3514
	Scenic Quality Rating Unit:	N/A

1. EVALUATOR NAMES: Christian Lynn and Heidi Childs

2. LANDSCAPE CHARACTER

	a. Landform / Water	b. Vegetation	c. Structure (General)
FORM	rolling, gentle smooth	Smooth foreground Maintained lawn & Tree Law	Sculptural. Clean. Vertical and horizontal minimals
LINE	undulating curvilinear	Hard undulating lines distinguishing vegetation types	Crisp, deliberate lines form both positive + negative space
COLOR	See Vegetation	Green Spectrum. Some tan + yellow spotting	Charcoal + white
TEXTURE	See Vegetation	Smooth, patterned to coarse + irregular	Smooth

3. NARRATIVE

This view looks from the backside of the Art OMI Visitors Center across the sculpture field to the north. This relatively clean landscape is dotted w/ sculptural pieces, while not significant in relative volume, the sculptural pieces dominate the landscape because of their strong shape and high contrast.

4. SCORE

	High	Medium	Low	Explanation or Rationale	SCENIC QUALITY CLASSIFICATION
LANDFORM	5	3	1		
VEGETATION	5	3	1		
WATER	5	3	0		
COLOR	5	3	1		
ADJACENT SCENERY	5	3	0		
SCARCITY	5	3	1		
CULTURAL MODIFICATION	5	3	0	Sculpture Fields	
TOTAL	+	+	=	19	<input checked="" type="checkbox"/> A. 19 OR MORE <input type="checkbox"/> B. 12-18 <input type="checkbox"/> C. 11 OR LESS

42° 19' 13.648" N Lat.
73° 41' 24.526" W Long.

**NEW YORK STATE ELECTRIC AND GAS CORPORATION
COLUMBIA COUNTY TRANSMISSION PROJECT**

SCENIC QUALITY FIELD INVENTORY	Date:	9/5/2012
	Weather:	76° - Partly Cloudy
	Observation Point:	KOP #4 - Van Valkenburgh / Sistor Farm
	Photo ID:	3408-3417
	Scenic Quality Rating Unit:	N/A

1. EVALUATOR NAMES: Christian Lynn + Heidi Childs

2. LANDSCAPE CHARACTER

	a. Landform / Water	b. Vegetation	c. Structure (General)
FORM	Gradual increased topography to North	lawn pyramidal trees (40')	Dutch Colonial Barn
LINE	No distinct lines	lawn edge lines jagged + irregular toe line	architecture - vert + horizontal power lines - horizontal drive - curvilinear
COLOR	See Vegetation See Structure	spectrum of greens light grass/oaks dark evergreens	high contrast structures dark tones on drive + transmission lines
TEXTURE	See vegetation	tight patterns on trees	linear texture on buildings power lines - sharp

3. NARRATIVE

Looking from the front yard + parking area of the historic farm, there is a gravel cul de sac surrounded by moderately mature trees. No trees are original to the property. A well travelled Rt. 22 passes in front of the house and running along it is a 50'-60' transmission line. The house and barns are well screened from the road with the exception of the area where the gravel drive cuts through.

4. SCORE

	High	Medium	Low	Explanation or Rationale	SCENIC QUALITY CLASSIFICATION
LANDFORM	5	(3)	1		<input checked="" type="checkbox"/> A. 19 OR MORE <input checked="" type="checkbox"/> B. 12-18 <input type="checkbox"/> C. 11 OR LESS
VEGETATION	5	(3)	1	Wetlands + Trees	
WATER	5	3	(0)		
COLOR	5	(4) 3	1		
ADJACENT SCENERY	5	(4) 3	0	Wetland + houses	
SCARCITY	5	(4) 3	1		
CULTURAL MODIFICATION	5+	(2) 0	-4	Historic Farmhouse / Road +	
TOTAL		+	+	= (19) Power Line	

42° 19' 15.407" N Lat
73° 41' 24.526" W Long

**NEW YORK STATE ELECTRIC AND GAS CORPORATION
COLUMBIA COUNTY TRANSMISSION PROJECT**

SCENIC QUALITY FIELD INVENTORY	Date:	9/5/12
	Weather:	77° - Mostly Sunny
	Observation Point:	KOP5 - VV Farm - Barnside
	Photo ID:	343418 - 3422
	Scenic Quality Rating Unit:	N/A

1. EVALUATOR NAMES: Christian Lynn + Heidi Childs

2. LANDSCAPE CHARACTER

	a. Landform / Water	b. Vegetation	c. Structure (General)
FORM	Simple, Symmetrical	natural grasses - foreground 35'-45' trees in background	road running adjacent to property.
LINE	Horizontal line along roadway	distinct horizontal line of separation between field + tree line is jagged	Strong vert. telephone poles horizontal road + power lines
COLOR	See Vegetation	browns, light greens, pink, + dark greens	Black/Gray/Red
TEXTURE	See Vegetation	tight + coarse	Fine + Ex Lines Gradational/Scattered - Drive. Directional - Barn.

3. NARRATIVE

The view from the Van Valkenburgh/Isbister Barns looks uphill across route 22 along which an existing transmission/telephone line has been located. From a certain vantage point, the road is hidden through topography however the electrical lines dominate the top 1/3 of the view. The foreground vegetation is a natural meadow w/ some seasonal color. The background is dominated by a dense evergreen and deciduous tree line.

4. SCORE

	High	Medium	Low	Explanation or Rationale	SCENIC QUALITY CLASSIFICATION
LANDFORM	5	3 (2)	1		
VEGETATION	5	3	1		<input checked="" type="checkbox"/> B. 12-18
WATER	5	3	0		<input type="checkbox"/> C. 11 OR LESS
COLOR	5 (4)	3	1		
ADJACENT SCENERY	5 (4)	3	0		
SCARCITY	5	3	1		
CULTURAL MODIFICATION	5+	0 (-1)	-4		
TOTAL		+	+	=	(15)

42° 19' 08.445" N Lat
73° 41' 24.526" W Long

**NEW YORK STATE ELECTRIC AND GAS CORPORATION
COLUMBIA COUNTY TRANSMISSION PROJECT**

SCENIC QUALITY FIELD INVENTORY	Date:	9/5/12
	Weather:	78° Mostly Cloudy
	Observation Point:	KOP 6 - Ghent Rec
	Photo ID:	3423-3425; 3516-3519
	Scenic Quality Rating Unit:	N/A

1. EVALUATOR NAMES: Christian Lynn + Heidi Childs

2. LANDSCAPE CHARACTER

	a. Landform / Water	b. Vegetation	c. Structure (General)
FORM	Flat + short gradual slopes	regular, layered vertical + horizontal	bold, definitive moderate dimensional mass vertical + horizontal
LINE	Smooth	jagged, irregular butted in between lawn + trees	strong edges of distinction between elements
COLOR	See Vegetation →	light foreground dark green hues → background	bold reds, yellows, blues* blacks, white and grays
TEXTURE	See Vegetation →	sparse foreground dense background	High contrast Smooth

3. NARRATIVE

The view looking from the Ghent Recreation Facility overlooks a playground structure, ball fields, small maintenance sheds, and a cemetery in the middle ground. The bold colors from the manmade structures dominate the foreground. The view is very layered with distinct lines of separation between forms. The background is comprised of a strong tree line w/ dark colors and high contrast. Grave stones dot the middle ground and have some vertical presence.

4. SCORE

	High	Medium	Low	Explanation or Rationale	SCENIC QUALITY CLASSIFICATION
LANDFORM	5	3	1		<input type="checkbox"/> A. 19 OR MORE <input checked="" type="checkbox"/> B. 12-18 <input type="checkbox"/> C. 11 OR LESS
VEGETATION	5	3	1	Some mature trees in foreground	
WATER	5	3	0		
COLOR	5	3	1	Playground is bold + unnatural	
ADJACENT SCENERY	5	3	0		
SCARCITY	5	4	1		
CULTURAL MODIFICATION	5+	2	0	Cemetery + Playground	
TOTAL		+	+	=	(16)

42° 19' 08.478" N. Lat.
73° 41' 54.841" W. Long.

**NEW YORK STATE ELECTRIC AND GAS CORPORATION
COLUMBIA COUNTY TRANSMISSION PROJECT**

SCENIC QUALITY FIELD INVENTORY	Date:	9/5/2012
	Weather:	79° Partly Cloudy
	Observation Point:	KOP#7 Ghent Cemetery
	Photo ID:	3426-3436
	Scenic Quality Rating Unit:	N/A

1. EVALUATOR NAMES: Christian Lynn and Heidi Childs

2. LANDSCAPE CHARACTER

	a. Landform / Water	b. Vegetation	c. Structure (General)
FORM	flat terrain	Simple form - foreground irregular tree line	vertical gravestones dominate - paved drive
LINE	horizontal	distinct line between lawn + tree line	sharp distinct edges
COLOR	See Vegetation	green monotone grass tree line - high contrast of varied greens	grays + blacks some reddish hues
TEXTURE	See Vegetation	smooth foreground course background	smooth bold

3. NARRATIVE

The View overlooking the cemetery is dominated in the foreground by scattered gravestones. The strong vertical and horizontal angles of the gravestones sharply contrasts with a more irregular background of trees. An access drive passes near the outer edge of the cemetery perpendicular to the gravestones eventually falling out of site as it wraps around the edge of the property.

4. SCORE

	High	Medium	Low	Explanation or Rationale	SCENIC QUALITY CLASSIFICATION
LANDFORM	5	3	1		
VEGETATION	5	3	1	Lawn	
WATER	5	3	0	None	
COLOR	5	3	1		
ADJACENT SCENERY	5	3	0		
SCARCITY	5	3	1		
CULTURAL MODIFICATION	5+	2	-4	Cemetery	
TOTAL		+	+	=	(16)

42° 17' 56.213" N Lat.
73° 42' 16.981" W Long.

NEW YORK STATE ELECTRIC AND GAS CORPORATION
COLUMBIA COUNTY TRANSMISSION PROJECT

SCENIC QUALITY FIELD INVENTORY	Date:	9/5/2012
	Weather:	80° Partly Cloudy
	Observation Point:	KOP # B - Golf Course
	Photo ID:	3431 - 3438
	Scenic Quality Rating Unit:	N/A

1. EVALUATOR NAMES: Christian Lynn + Heidi Childs

2. LANDSCAPE CHARACTER

	a. Landform / Water	b. Vegetation	c. Structure (General)
FORM	Rolling Hills Larger hills in background	Maintained lawn in foreground irregular planting areas	Simple - bold
LINE	Soft lines in foreground Distinct terrain in background	Irregular	Vertical + horizontal
COLOR	Dark background	Shades of green Darker in areas of shadows	Small slices of gray
TEXTURE	Bold smooth background	Stippled foreground Blotchy middle ground	Solid

3. NARRATIVE

This view looks from a high point of a public golf course back towards moderately sized hills that make a presence in the background. While there has been significant manipulation to the property as a result of the golf course, this vantage point offers some long views of adjacent tree lines. Highway 9th runs in front perpendicular to the view just to the north however the rolling topographic features make it minimally noticeable when

4. SCORE

	High	Medium	Low	Explanation or Rationale	SCENIC QUALITY CLASSIFICATION <i>there is no traffic.</i>
LANDFORM	5	3	1		
VEGETATION	5	3	1	Fairways - manmade	<input checked="" type="checkbox"/> B. 12-18
WATER	5	3	0	Manmade Pond	
COLOR	5	3	1		<input type="checkbox"/> C. 11 OR LESS
ADJACENT SCENERY	5	4	3	Long Views	
SCARCITY	5	3	1		
CULTURAL MODIFICATION	5+	0	-4	Golf Course	
TOTAL	+	+	=	18	

42° 19' 27.631" N Lat
73° 42' 12.223" W Long

**NEW YORK STATE ELECTRIC AND GAS CORPORATION
COLUMBIA COUNTY TRANSMISSION PROJECT**

SCENIC QUALITY FIELD INVENTORY	Date:	9/5/2012
	Weather:	77° Mostly Cloudy
	Observation Point:	KOP #9 - Rt 9H Looking West
	Photo ID:	3439-3443
	Scenic Quality Rating Unit:	N/A

1. EVALUATOR NAMES: Christian Lynn + Heidi Childs

2. LANDSCAPE CHARACTER

	a. Landform / Water	b. Vegetation	c. Structure (General)
FORM	Sloping to flat field	Irregular scrub Invasives	N/A
LINE	Indistinguishable	Silhouette tree line is jagged + broken	N/A
COLOR	See Vegetation	grays + greens	N/A
TEXTURE	See Vegetation	Blotchy, Irregular.	N/A

3. NARRATIVE View along Rt. 9H Looking to the east is muddled and offers only a minimal view to the farm field beyond. The slope immediately drops off to what appears to be a stream bed and then gradually gains elevation as it goes to the east. The vegetation in the foreground has some invasive species. A small open area along the road in the foreground of the view lacks deciduous vegetation and looks as though it could have at one point been a staging area for road construction.

4. SCORE

	High	Medium	Low	Explanation or Rationale	SCENIC QUALITY CLASSIFICATION
LANDFORM	5	3	1		<input type="checkbox"/> A. 19 OR MORE <input type="checkbox"/> B. 12-18 <input checked="" type="checkbox"/> C. 11 OR LESS
VEGETATION	5	3	1		
WATER	5	3	0		
COLOR	5	3	1		
ADJACENT SCENERY	5	3	0		
SCARCITY	5	3	1		
CULTURAL MODIFICATION	5+	0	-4	Adjacent Roadway	
TOTAL	+	+	=	7	

42° 19' 27.140" N Lat.
73° 42' 10.463" W Long

**NEW YORK STATE ELECTRIC AND GAS CORPORATION
COLUMBIA COUNTY TRANSMISSION PROJECT**

SCENIC QUALITY FIELD INVENTORY	Date:	9/5/12
	Weather:	77° Mostly Cloudy
	Observation Point:	KOP#10 Rt. 9H Looking East
	Photo ID:	3439 - 3443
	Scenic Quality Rating Unit:	N/A

1. EVALUATOR NAMES: Christian Lynn and Heidi Childs

2. LANDSCAPE CHARACTER

	a. Landform / Water	b. Vegetation	c. Structure (General)
FORM	Sloped, smooth	Diverse, Patchy Irregular	architectural rigid
LINE	Soft undulating line along field edge	Semi Distinct line between field & tree	Line vertical & horizontal
COLOR	See Vegetation	Greens, pinks, reds, & purples	whites & grays
TEXTURE	See Vegetation	fine in foreground, coarse background	solid, bold

3. NARRATIVE View looking east travelling along route 9H is minimal w/out finding an opening in the tree line. This view which looks through a moderately sized opening shows a large farm field that is currently in a natural state. The terrain slopes upward to a ridge towards the east. The foreground field offers a diverse range of colors from the perennial flowers. The colonial style house at the top of the field is partially visible and is not a dominant landscape element. While not directly visible from this view, the cultural modification to the site is significant w/ a major north/south road directly adjacent.

4. SCORE

	High	Medium	Low	Explanation or Rationale	SCENIC QUALITY CLASSIFICATION
LANDFORM	5	(4) 3	1		<input type="checkbox"/> A. 19 OR MORE <input checked="" type="checkbox"/> B. 12-18 <input type="checkbox"/> C. 11 OR LESS
VEGETATION	5	(4) 3	1		
WATER	5	3	(0)		
COLOR	5	(4) 3	1	Seasonal	
ADJACENT SCENERY	5	(4) 3	0	Historic Looking Homes	
SCARCITY	5	(4) 3	1		
CULTURAL MODIFICATION	5+	0 (-)	-4	Adjacent Roadway	
TOTAL		+	+	=	(18)

L 42° 19' 36.525" N Lat.
 LON 73° 41' 41.069" W Long.

**NEW YORK STATE ELECTRIC AND GAS CORPORATION
 COLUMBIA COUNTY TRANSMISSION PROJECT**

SCENIC QUALITY FIELD INVENTORY	Date:	9/5/2012
	Weather:	76° Mostly Cloudy
	Observation Point:	KOP #11
	Photo ID:	3451-3463
	Scenic Quality Rating Unit:	N/A

1. EVALUATOR NAMES: Christian Lynn and Heidi Childs

2. LANDSCAPE CHARACTER

	a. Landform / Water	b. Vegetation	c. Structure (General)
FORM	Sloping / Rolling Hills	Layered, Distinct Horizontal	N/A
LINE	Horizontal / Linear	Strong Linear Broken irregular tree line	N/A
COLOR	See Vegetation	Bold, Dark, Blotchy foreground	N/A
TEXTURE	See Vegetation	Regular / patterned smooth	N/A

3. NARRATIVE

This view looks across the Hudson Valley from the west. The view is accessed along Rt. 385. The long view is dominated w/ an agricultural field in the foreground w/ a backdrop of deciduous trees. The background beyond the Hudson to the east is accented w/ distant hills.

4. SCORE

	High	Medium	Low	Explanation or Rationale	SCENIC QUALITY CLASSIFICATION
LANDFORM	5 (4)	3	1	Long view of Mountains	<input type="checkbox"/> A. 19 OR MORE <input checked="" type="checkbox"/> B. 12-18 <input type="checkbox"/> C. 11 OR LESS
VEGETATION	5	(3)	1		
WATER	5	3	(0)		
COLOR	5	(3)	1		
ADJACENT SCENERY	5	(4)	3		
SCARCITY	5	(4)	3		
CULTURAL MODIFICATION	5+	(0)	-4	Roadway Behind	
TOTAL		+	+	=	(18)

Lat. 42.329152
 Long. -73.703960

**NEW YORK STATE ELECTRIC AND GAS CORPORATION
 COLUMBIA COUNTY TRANSMISSION PROJECT**

SCENIC QUALITY FIELD INVENTORY

Date:	9/6/2012
Weather:	75° Cloudy
Observation Point:	KOP 12 - 9th North
Photo ID:	3520-3530
Scenic Quality Rating Unit:	N/A

1. EVALUATOR NAMES: Christian Lynn & Heidi Chubb

2. LANDSCAPE CHARACTER

	a. Landform / Water	b. Vegetation	c. Structure (General)
FORM	flat w/ slight undulation	Vertical and low horizontal - no transition	Linear, Low geometric, architectural
LINE	minimal	Tree trunks - strong vertical lines irregular tree line	long horizontal chest verticals
COLOR	See Vegetation	green spectrum some light brown trees	red, off-white, charcoal. high contrast - non blending
TEXTURE	See Vegetation	Coarse & Irregular	Smooth -

3. NARRATIVE

Looking south along 9th provides minimal scenic potential. Route 9th is an extremely heavy travelled road w/ a speed limit of 55mph. Industrial offices & storage buildings occupy both sides in this Corridor. There is very limited long range visibility due to the increased topography towards the east and the treelines to the South.

4. SCORE

	High	Medium	Low	Explanation or Rationale	SCENIC QUALITY CLASSIFICATION
LANDFORM	5	3 (2)	1		<input type="checkbox"/> A. 19 OR MORE <input type="checkbox"/> B. 12-18 <input checked="" type="checkbox"/> C. 11 OR LESS
VEGETATION	5	3	1		
WATER	5	3	0		
COLOR	5	3	1		
ADJACENT SCENERY	5	3 (1)	0		
SCARCITY	5	3	1		
CULTURAL MODIFICATION	5+	0 (-2)	4	Highway & Industrial	
TOTAL		+	+	=	(12)

* Photo Taken by DPS

**NEW YORK STATE ELECTRIC AND GAS CORPORATION
COLUMBIA COUNTY TRANSMISSION PROJECT**

SCENIC QUALITY FIELD INVENTORY	Date:	9/21/12
	Weather:	Clear and Sunny
	Observation Point:	KOP 13 - Rt. 203 Looking South
	Photo ID:	IMG-691
	Scenic Quality Rating Unit:	N/A

1. EVALUATOR NAMES: Christian Lynn (Not Completed in Field)

2. LANDSCAPE CHARACTER

	a. Landform / Water	b. Vegetation	c. Structure (General)
FORM	Simple, indistinguishable	Irregular, Blended	Vertical, Dominant
LINE	N/A	Jagged, Irregular Tree Line	Clean, Sharp, Bold
COLOR	See Vegetation	Greens, Yellows, Browns, + Whites	High Contrast Light Colors
TEXTURE	See Vegetation	Coarse, Repetitive	Smooth Solid

3. NARRATIVE

The view looking off Rt. 203 captures an existing transmission line + an approximate 100' Row. The Row are slightly more open near the road but are reestablished in the middleground. The Row is dominated by scrubby vegetation approximately 5-10' in height. Approximately 600' from Rt. 203, the Row turns and closes the view from the road.

4. SCORE

	High	Medium	Low	Explanation or Rationale	SCENIC QUALITY CLASSIFICATION
LANDFORM	5	(3)	(1)		
VEGETATION	5	3	1	Low Scrub - Some Invasives	<input type="checkbox"/> B. 12-18
WATER	5	3	0		<input checked="" type="checkbox"/> C. 11 OR LESS
COLOR	5	(3)	1		
ADJACENT SCENERY	5	3	0		
SCARCITY	5	3	(1)		
CULTURAL MODIFICATION	5+	0	(-4)	Transmission Lines	
TOTAL	+	+	=	(7)	

* Photo Taken by DPS

**NEW YORK STATE ELECTRIC AND GAS CORPORATION
COLUMBIA COUNTY TRANSMISSION PROJECT**

SCENIC QUALITY FIELD INVENTORY	Date:	9/21/12
	Weather:	Clear Sunny
	Observation Point:	KOP-14 → Klinekill
	Photo ID:	IMG-692
	Scenic Quality Rating Unit:	N/A

1. EVALUATOR NAMES:

2. LANDSCAPE CHARACTER

	a. Landform / Water	b. Vegetation	c. Structure (General)
FORM			
LINE			
COLOR			
TEXTURE			

3. NARRATIVE

See SQFI for KOP #1
(Same View)

4. SCORE

	High	Medium	Low	Explanation or Rationale	SCENIC QUALITY CLASSIFICATION
LANDFORM	5	3	1		
VEGETATION	5	3	1		<input type="checkbox"/> B. 12-18
WATER	5	3	0		<input type="checkbox"/> C. 11 OR LESS
COLOR	5	3	1		
ADJACENT SCENERY	5	3	0		
SCARCITY	5	3	1		
CULTURAL MODIFICATION	5+	0	-4		
TOTAL	+	+	=		

* Photo taken by DPS

**NEW YORK STATE ELECTRIC AND GAS CORPORATION
COLUMBIA COUNTY TRANSMISSION PROJECT**

SCENIC QUALITY FIELD INVENTORY	Date:	9/21/2012
	Weather:	Clear, Sunny
	Observation Point:	KOP-15 - Klinekill Case, western Tra
	Photo ID:	IMG-69B
	Scenic Quality Rating Unit:	N/A

1. EVALUATOR NAMES: Christian Lynn

2. LANDSCAPE CHARACTER

	a. Landform / Water	b. Vegetation	c. Structure (General)
FORM	Valley Bottom w/ Hill sides	layered	Vertical, Linear
LINE	Strong Horizontals @ Topographic Transitions	horizontal, distinct	Bold, crisp verticals + diagonals
COLOR	See Vegetation	greens, reds, browns, + tans. Blended	high contrast, Light - nonearth tones
TEXTURE	See Vegetation	Coarse + smooth	smooth, precise, clean repetitive.

3. NARRATIVE The view from the high point of the Klinekill hiking trail is approximately 20' higher than the field in the middle ground. The existing transmission lines + ROW cut through + across this area, creating a distinct separation of vegetation. While the existing transmission lines do not have supports located by in the open field, the overhead lines + their repetitive pattern dominate the view. Despite the presence of the transmission lines, the view offers a rolling valley landscape typical of the area.

4. SCORE

	High	Medium	Low	Explanation or Rationale	SCENIC QUALITY CLASSIFICATION
LANDFORM	5 (4)	3	1		<input type="checkbox"/> A. 19 OR MORE <input type="checkbox"/> B. 12-18 <input checked="" type="checkbox"/> C. 11 OR LESS
VEGETATION	5	3	1		
WATER	5	3	0		
COLOR	5	3	1		
ADJACENT SCENERY	5	3	0		
SCARCITY	5	3	1		
CULTURAL MODIFICATION	5+	0	-4	transmission lines; clearing	
TOTAL	+	+	=	(10)	

* Photo taken by DPS

**NEW YORK STATE ELECTRIC AND GAS CORPORATION
COLUMBIA COUNTY TRANSMISSION PROJECT**

SCENIC QUALITY FIELD INVENTORY	Date:	9/09/12
	Weather:	Clear/ Sunny
	Observation Point:	KOP-11a - Walkerville Road # 142
	Photo ID:	IMG-698
	Scenic Quality Rating Unit:	N/A

1. EVALUATOR NAMES: Christian Lynn

2. LANDSCAPE CHARACTER

	a. Landform / Water	b. Vegetation	c. Structure (General)
FORM	Rolling, Smooth Natural	Varied, diverse, dominant	Architectural angular
LINE	Curvilinear topographic transitions	jagged field, edges, irregular tree line	Strong Red Lines
COLOR	See Vegetation	green dominant w/ high contrast highlights	High Contrast Light Colors
TEXTURE	See Vegetation	Semi-coarse to Coarse	Solid, Crisp

3. NARRATIVE

View offers a typical landform w/ rolling hills, some mature vegetation, and evidence of a small stream. The fields which dominate the view have native wild flowers scattered throughout the landscape. The background captures to the upper portion of the home. As the only significant manmade element in the view, the architectural lines are highly contrasted w/ the natural surroundings.

4. SCORE

	High	Medium	Low	Explanation or Rationale	SCENIC QUALITY CLASSIFICATION
LANDFORM	5 (4)	3	1		
VEGETATION	5 (4)	3	1		<input type="checkbox"/> B. 12-18
WATER	5	3	0		<input type="checkbox"/> C. 11 OR LESS
COLOR	5 (4)	3	1		
ADJACENT SCENERY	5 (4)	3	0		
SCARCITY	5	3	1		
CULTURAL MODIFICATION	5+	0	-4		
TOTAL	+	+	=	(19)	

*Photo taken by DPS

**NEW YORK STATE ELECTRIC AND GAS CORPORATION
COLUMBIA COUNTY TRANSMISSION PROJECT**

SCENIC QUALITY FIELD INVENTORY	Date:	9/24/12
	Weather:	Partly Cloudy
	Observation Point:	KOP 17 - Leggett Road Looking South
	Photo ID:	TRC-003
	Scenic Quality Rating Unit:	N/A

1. EVALUATOR NAMES: Christian Lynn (Not completed in field)

2. LANDSCAPE CHARACTER

	a. Landform / Water	b. Vegetation	c. Structure (General)
FORM	Rolling, Smooth	Short, Maintained, enveloped by vertical curtain	linear, grid like
LINE	Horizontal Crests	jagged tree frames Irregular tree line	Horizontal + vertical Clean
COLOR	See Vegetation	green dominant w/ some speckled highlights	Dark, High Contrast
TEXTURE	See Vegetation	smooth, repetitive coarse background	Solid w/ repetitive grid pattern.

3. NARRATIVE This south oriented view off of Leggett road offers a view of a local horse farm and associated fencing. The bold black fencing adjacent to the roadway is a dominant element. The land form in this view is unaltered, showing the undulating hills and valleys which are typical to the region. The farm is carved into an existing forested area which now comprises the background. This view does not offer a long range perspective.

4. SCORE

	High	Medium	Low	Explanation or Rationale	SCENIC QUALITY CLASSIFICATION
LANDFORM	5	(3)	1		
VEGETATION	5	3 (2)	1		<input checked="" type="checkbox"/> B. 12-18
WATER	5	3	(0)		<input type="checkbox"/> C. 11 OR LESS
COLOR	5	(3)	1		
ADJACENT SCENERY	5	(3)	0		
SCARCITY	5	(3)	1		
CULTURAL MODIFICATION	5+	(2) (0)	-4	Stud Farm	
TOTAL		+	+	=	(16)

*Photo taken by PPS

**NEW YORK STATE ELECTRIC AND GAS CORPORATION
COLUMBIA COUNTY TRANSMISSION PROJECT**

SCENIC QUALITY FIELD INVENTORY	Date:	9/24/12
	Weather:	Clear
	Observation Point:	KOP 1B - Old Post Road (Looking west)
	Photo ID:	IMG-008
	Scenic Quality Rating Unit:	N/A

1. EVALUATOR NAMES: Christian Lynn

2. LANDSCAPE CHARACTER

	a. Landform / Water	b. Vegetation	c. Structure (General)
FORM	Rolling w/ a dominant background of catkills	Open Field Framed w/ intro vegetation	N/A
LINE	Smooth horizontal line delineating mountain range	horizontal @ vegetation type transitions	N/A
COLOR	See Vegetation	diverse colors intense highlights dominate foreground	N/A
TEXTURE	See Vegetation	medium coarse foreground coarse middle ground smooth background	N/A

3. NARRATIVE

Looking from a near high point of Old Post Road offers a unique long view across the Hudson Valley dominated by the Catskill mountains in the background. The vegetation along the sloping foreground field offers a diverse range of colors and a bold canvassed texture

4. SCORE

	High	Medium	Low	Explanation or Rationale	SCENIC QUALITY CLASSIFICATION
LANDFORM	5	3	1		<input checked="" type="checkbox"/> A. 19 OR MORE <input type="checkbox"/> B. 12-18 <input type="checkbox"/> C. 11 OR LESS
VEGETATION	5	4	1		
WATER	5	3	0		
COLOR	5	4	1		
ADJACENT SCENERY	5	4	0	Historic Farmhouses	
SCARCITY	5	4	1		
CULTURAL MODIFICATION	5	4	0	Limited	
TOTAL	+	+	=	25	

* Photo Taken by DPS

**NEW YORK STATE ELECTRIC AND GAS CORPORATION
COLUMBIA COUNTY TRANSMISSION PROJECT**

SCENIC QUALITY FIELD INVENTORY	Date:	9/21/12
	Weather:	Clear, Sunny
	Observation Point:	KOP # 19 - Old Stockport Road
	Photo ID:	IMG 714
	Scenic Quality Rating Unit:	N/A

1. EVALUATOR NAMES: Christian Lynn

2. LANDSCAPE CHARACTER

	a. Landform / Water	b. Vegetation	c. Structure (General)
FORM	Flat - Some rolling	Long, Flat, Bold	Indistinct, Regular, Geometric
LINE	Soft, Broken Horizontal	Vertical, Complex Semi-regular	Hard, Straight Simple
COLOR	See Vegetation	Secondary colors Color Harmony	Tertiary colors Uniformity in color
TEXTURE	See Vegetation	Coarse Dense, Continuous	Smooth

3. NARRATIVE

The view from Old Stockport road is very representative of the agricultural setting w/ in the region. While the land is generally flat, the slight rolling nature adds interest. This is a particularly long view considering the terrain in the region.

4. SCORE

	High	Medium	Low	Explanation or Rationale	SCENIC QUALITY CLASSIFICATION
LANDFORM	5	(3)	1		<input type="checkbox"/> A. 19 OR MORE
VEGETATION	5	(4)	3	Diversity	<input type="checkbox"/> A. 19 OR MORE
WATER	5	3	(0)	Varied	<input checked="" type="checkbox"/> B. 12-18
COLOR	5	(4)	3		<input type="checkbox"/> C. 11 OR LESS
ADJACENT SCENERY	5	(4)	3	Most open areas	
SCARCITY	5	(3)	1	Ag is more common	
CULTURAL MODIFICATION	5+	(0)	-4		
TOTAL	+	+	=	18	

NEW YORK STATE ELECTRIC AND GAS CORPORATION
COLUMBIA COUNTY TRANSMISSION PROJECT

SCENIC QUALITY FIELD INVENTORY

Date: 11/6/2012
 Weather: Clear, Sunny 42°
 Observation Point: KOP 20 - 397 Old Post Road
 Photo ID: CIMG 16781 + 16783
 Scenic Quality Rating Unit: N/A

1. EVALUATOR NAMES: Christian Lynn

2. LANDSCAPE CHARACTER

	a. Landform / Water	b. Vegetation	c. Structure (General)
FORM	flat plateau mountainous background	Irregular Form	Scattered, linear
LINE	smooth, flowing horizontal	Irregular, Jagged Smooth in mid/background	horizontal rooflines "
COLOR	high contrast dark gray	high contrast greens + browns	highlights whites + grays
TEXTURE	medium coarse	medium coarse smooth textured background	bold, smooth "

3. NARRATIVE The view looks from the potentially historic home towards the southwest. The view looks across the Hudson to capture the visually substantial Catskill Mountains in the background. There is a small scattering of light industrial buildings to the south which includes some tanks and additional maintenance facilities. *The high density of*

4. SCORE

	High	Medium	Low	Explanation or Rationale	SCENIC QUALITY CLASSIFICATION
LANDFORM	5 (4)	3	1	Catskill Mountains	<input type="checkbox"/> A. 19 OR MORE <input checked="" type="checkbox"/> B. 12-18 <input type="checkbox"/> C. 11 OR LESS
VEGETATION	5	(3)	1		
WATER	5	3	(0)		
COLOR	5	(3)	1		
ADJACENT SCENERY	5 (4)	3	0	Historic Home	
SCARCITY	5 (4)	3	1	"	
CULTURAL MODIFICATION	5+	(0)	-4	Industrial Buildings	
TOTAL		+	+	= 18	

**NEW YORK STATE ELECTRIC AND GAS CORPORATION
COLUMBIA COUNTY TRANSMISSION PROJECT**

SCENIC QUALITY FIELD INVENTORY	Date:	11/6/12
	Weather:	Clear, Sunny 42°
	Observation Point:	KOP21 - 489 Old Post Road
	Photo ID:	CIMG-6803 + 6801
	Scenic Quality Rating Unit:	N/A

1. EVALUATOR NAMES: Christian Lynn

2. LANDSCAPE CHARACTER

	a. Landform / Water	b. Vegetation	c. Structure (General)
FORM	Steep terrain hillside	Vortical forming a wall	Linear
LINE	Hard Linear	Jagged	Vortical + Diagonal CRISP
COLOR	Grays	Silhouette dark greens in shadow	dark, solid hues
TEXTURE	smooth	Coarse.	smooth + solid.

3. NARRATIVE

View along Old Post Road near a potentially historic structure. The view towards the East is obstructed by a 15' hillside along the East side of the road. This is a rural two-lane road running parallel and to the east of the more heavily travelled Route 9H.

4. SCORE

	High	Medium	Low	Explanation or Rationale	SCENIC QUALITY CLASSIFICATION
LANDFORM	5	(3)	1		
VEGETATION	5	(3)	1		<input checked="" type="checkbox"/> B. 12-18
WATER	5	3	(0)		<input type="checkbox"/> C. 11 OR LESS
COLOR	5	(3)	1		
ADJACENT SCENERY	5 (4)	3	0	Potentially Historic Structure	
SCARCITY	5 (4)	3	1		
CULTURAL MODIFICATION	5+	(0)	-4		
TOTAL	+	+	=	17	

**NEW YORK STATE ELECTRIC AND GAS CORPORATION
COLUMBIA COUNTY TRANSMISSION PROJECT**

SCENIC QUALITY FIELD INVENTORY	Date:	11/6/12
	Weather:	Clear, Sunny 42°
	Observation Point:	KOP22 = 2260 Rt. 66
	Photo ID:	C176 6745 + 6749
	Scenic Quality Rating Unit:	N/A

1. EVALUATOR NAMES: Christian Lynn

2. LANDSCAPE CHARACTER

	a. Landform / Water	b. Vegetation	c. Structure (General)
FORM	Flat, soft.	non massing. individually architectural dominant	Linear, Architectural
LINE	not distinct	Irregular	vertical + horizontal some diagonal
COLOR	→	greens + browns	Light Colored Homes Muted
TEXTURE	→	medium coarse	smooth, fine

3. NARRATIVE

The view looks across Rt. 66 in the town of Ghent. The generally historic looking homes are closely spaced and offer only minimal views into the background. The road is flanked on the west by power distribution lines + poles. The rear yards behind the homes are bordered by semi-evergreen vegetation limiting any extended views.

4. SCORE

	High	Medium	Low	Explanation or Rationale	SCENIC QUALITY CLASSIFICATION
LANDFORM	5	3	(1)		<input type="checkbox"/> A. 19 OR MORE <input checked="" type="checkbox"/> B. 12-18 <input type="checkbox"/> C. 11 OR LESS
VEGETATION	5	(4) 3	1	Large Streetside Trees	
WATER	5	3	(0)		
COLOR	5	(4) 3	1	Historic Colors	
ADJACENT SCENERY	5	(4) 3	0	Potentially Historic Homes	
SCARCITY	5	(4) 3	1	"	
CULTURAL MODIFICATION	5+	(0)	-4		
TOTAL	+	+	=	(16)	

**NEW YORK STATE ELECTRIC AND GAS CORPORATION
COLUMBIA COUNTY TRANSMISSION PROJECT**

SCENIC QUALITY FIELD INVENTORY

Date: 11/6/2012
 Weather: Clear, Sunny 42°
 Observation Point: KOP 23 - Christ Evangelical Church
 Photo ID: CIMG 6741 & 6743
 Scenic Quality Rating Unit: N/A

1. EVALUATOR NAMES: Christian Lynn

2. LANDSCAPE CHARACTER

	a. Landform / Water	b. Vegetation	c. Structure (General)
FORM	Indistinct	Distinct Prominent	Definite, rectangular Asymmetrical
LINE	Soft, weak Smooth	Broken, Jagged Diverging	Hard, horizontal, vertical + diagonal
COLOR	→	Bold, Green + Brown High Contrast	Bold, bright high contrast
TEXTURE	→	Medium, Varied. Discontinuous	Smooth, Fine Dense

3. NARRATIVE

This view looks across Rt. 66 in the town of Ghent from the potentially historic Christ Evangelical Church. The view captures typical homes sitting near the Row w/ deep (150') rear yards. The house directly across the street offers architectural character typical to the area. The garage building in the rear yard is two stories w/ a large 20'-30' antenna extending beyond the roof line. The antenna is dominant in the view due to its height and detracts from the scenic quality.

4. SCORE

	High	Medium	Low	Explanation or Rationale	SCENIC QUALITY CLASSIFICATION
LANDFORM	5	3	(1)		<input type="checkbox"/> A. 19 OR MORE
VEGETATION	5	(4)	3	Large Mature Trees	<input type="checkbox"/> A. 19 OR MORE
WATER	5	3	(0)		<input type="checkbox"/> A. 19 OR MORE
COLOR	5	(4)	3	Historic Home Colors	<input checked="" type="checkbox"/> B. 12-18
ADJACENT SCENERY	5	(4)	3	Potentially Historic Structure	<input checked="" type="checkbox"/> B. 12-18
SCARCITY	5	(4)	3	Potentially Historic Structure	<input checked="" type="checkbox"/> B. 12-18
CULTURAL MODIFICATION	5+	0	(-2)	Antenna	<input type="checkbox"/> C. 11 OR LESS
TOTAL	+	+	=	(15)	

**NEW YORK STATE ELECTRIC AND GAS CORPORATION
COLUMBIA COUNTY TRANSMISSION PROJECT**

SCENIC QUALITY FIELD INVENTORY

Date: 11/6/2012
 Weather: Clear, Sunny
 Observation Point: KOP 24 - #115 Route 21B
 Photo ID: CIMG6726 + 6729
 Scenic Quality Rating Unit: N/A

1. EVALUATOR NAMES: Christian Lynn

2. LANDSCAPE CHARACTER

	a. Landform / Water	b. Vegetation	c. Structure (General)
FORM	Rolling, Undulating	Distinct form of Willow Jagged + Architectural	Simple, Linear
LINE	Smooth, soft Simple	Jagged, diverging	Horizontal, Vertical Diagonal
COLOR	→	Subtle, muted in shadow, glare	Glare, Primary Colors Extreme Light + Dark
TEXTURE	→	Coarse to medium Coarse. Some Medium Striping	Solid

3. NARRATIVE

This viewshed is highly scenic. The view looks east across a potentially historic farmhouse property and agricultural fields. The vegetation in the foreground is distinct. The backdrop for the viewshed is a small ridge line approximately 1000' to the west. The view remains relatively unimpacted by significant cultural modification. The pond in the foreground adds scenic quality because of the reflection + textural change that it provides.

4. SCORE

	High	Medium	Low	Explanation or Rationale	SCENIC QUALITY CLASSIFICATION
LANDFORM	5	(3)	1		<input checked="" type="checkbox"/> A. 19 OR MORE <input type="checkbox"/> B. 12-18 <input type="checkbox"/> C. 11 OR LESS
VEGETATION	5	(4)	1		
WATER	5	(3)	0		
COLOR	5	(4)	1		
ADJACENT SCENERY	5	(4)	0	Potentially Historic	
SCARCITY	5	(4)	1	"	
CULTURAL MODIFICATION	5+	(3)	-4	"	
TOTAL		+	+	=	(25)

Columbia County Transmission Project
Visual Impact Analysis

Appendix D
Visual Contrast Rating Worksheets

**NEW YORK STATE ELECTRIC AND GAS CORPORATION
COLUMBIA COUNTY TRANSMISSION PROJECT**

VISUAL CONTRAST RATING FORM

Date: 9/5/12
 Weather: Partly Cloudy; 68°
 Activity Proposed: 115kV Transmission Lines

1. Name of Observation Point: KOP #1 Siegel Klinekill Conservation Area
 2. Photo ID: 3391-3395

SECTION A: PROPOSED ACTIVITY DESCRIPTION

	a. Landform / Water	b. Vegetation	c. Structure (General)
FORM	N/A	N/A	Simple
LINE	N/A	N/A	Horizontal; Vertical
COLOR	N/A	N/A	Subdued, Simple - Tans, Grays
TEXTURE	N/A	N/A	Smooth Crisp Bold

SECTION B: CONTRAST RATING

SHORT TERM LONG TERM

1. DEGREE OF CONTRAST		FEATURES												3. Are there potential measures for mitigation? See description below. <input type="checkbox"/> YES <input checked="" type="checkbox"/> NO
		LAND / BODY WATER (1)				VEGETATION (2)				STRUCTURES (3)				
		Strong	Medium	Weak	None	Strong	Medium	Weak	None	Strong	Medium	Weak	None	
ELEMENTS	Form													Evaluator's Names <u>Christian Lynn</u> Date <u>9/5/12</u>
	Line									✓				
	Color									✓	✓			
	Texture									✓	✓			

SECTION C: MITIGATION

NARRATIVE/SKETCH:

N/A

SECTION D: SUMMARY

NARRATIVE:

The proposed transmission lines will create a strong contrast against the existing landscape. While the existing lines are visually noticeable, the new lines are taller and have a greater number of poles exposed in the open area. The taller height of the lines gives the viewer a perspective that includes a light colored sky as the backdrop. This increases the contrast.

**NEW YORK STATE ELECTRIC AND GAS CORPORATION
COLUMBIA COUNTY TRANSMISSION PROJECT**

VISUAL CONTRAST RATING FORM

Date: 9/16/2012
Weather: 68°, Partly Cloudy
Activity: Proposed 115kV Transmission Lines

1. Name of Observation Point: KOP#3B Art OMI Visitors Center
2. Photo ID: 3483-3514

SECTION A: PROPOSED ACTIVITY DESCRIPTION

	a. Landform / Water	b. Vegetation	c. Structure (General)
FORM	N/A	N/A	Minimal, Architectural
LINE	N/A	N/A	Simple Vertical + Sagging Horizontal
COLOR	N/A	N/A	Dark Hues, Subtle
TEXTURE	N/A	N/A	Simple, Smooth

SECTION B: CONTRAST RATING SHORT TERM LONG TERM

1. DEGREE OF CONTRAST	FEATURES												3. Are there potential measures for mitigation? See description below. <input type="checkbox"/> YES <input checked="" type="checkbox"/> NO
	LAND / BODY WATER (1)				VEGETATION (2)				STRUCTURES (3)				
	Strong	Medium	Weak	None	Strong	Medium	Weak	None	Strong	Medium	Weak	None	
Form			✓				✓				✓		Evaluator's Names Date Christian Lynn 9/6/12
Line			✓				✓				✓		
Color				✓			✓				✓		
Texture			✓				✓				✓		

SECTION C: MITIGATION

NARRATIVE/SKETCH:

N/A

SECTION D: SUMMARY

NARRATIVE:

The contrast and impact of the proposed transmission line can be seen in the background. Due to the distance from the proposed ROW, the contrasting color and texture is not distinct. The transmission lines are more visible due to their horizontal structure however the distance dilutes the contrast of the form.

**NEW YORK STATE ELECTRIC AND GAS CORPORATION
COLUMBIA COUNTY TRANSMISSION PROJECT**

VISUAL CONTRAST RATING FORM

Date: 9/5/2012
 Weather: 79° Partly Cloudy
 Activity: Proposed 115kV Transmission Lines

1. Name of Observation Point: KOP #1 - West Ghent Cemetery
 2. Photo ID: 3426-3430

SECTION A: PROPOSED ACTIVITY DESCRIPTION

	a. Landform / Water	b. Vegetation	c. Structure (General)
FORM	N/A	N/A	N/A
LINE	"	"	"
COLOR	"	"	"
TEXTURE	"	"	"

SECTION B: CONTRAST RATING

SHORT TERM LONG TERM

1. DEGREE OF CONTRAST	FEATURES												3. Are there potential measures for mitigation? See description below. <input type="checkbox"/> YES <input checked="" type="checkbox"/> NO
	LAND / BODY WATER (1)				VEGETATION (2)				STRUCTURES (3)				
	Strong	Medium	Weak	None	Strong	Medium	Weak	None	Strong	Medium	Weak	None	
Form				/				/				/	Evaluator's Names: Christian Lynn Date: 9/5/2012
Line				/				/				/	
Color				/				/				/	
Texture				/				/				/	

SECTION C: MITIGATION

NARRATIVE/SKETCH:

N/A

SECTION D: SUMMARY

NARRATIVE:

Lines are not visible in current views

*Photo taken by DPS

**NEW YORK STATE ELECTRIC AND GAS CORPORATION
COLUMBIA COUNTY TRANSMISSION PROJECT**

VISUAL CONTRAST RATING FORM

Date: 9/21/12

Weather: Clear & Sunny

Activity: Proposed 115kV Transmission Line

1. Name of Observation Point: KOP 13 - Route 203 Looking South

2. Photo ID: #MG 691

SECTION A: PROPOSED ACTIVITY DESCRIPTION

	a. Landform / Water	b. Vegetation	c. Structure (General)
FORM	N/A	Transitional	Rigid, Bold, Prominent, Tall
LINE	N/A	N/A	Sharp, Strong Vertical, Angular
COLOR	N/A	N/A	Simple, ^{subtle} Solid, Low Chroma
TEXTURE	N/A	N/A	Crisp, Solid, Uniform, ^{orderly}

SECTION B: CONTRAST RATING SHORT TERM LONG TERM

1. DEGREE OF CONTRAST	FEATURES												3. Are there potential measures for mitigation? See description below. <input checked="" type="checkbox"/> YES <input type="checkbox"/> NO
	LAND / BODY WATER (1)				VEGETATION (2)				STRUCTURES (3)				
	Strong	Medium	Weak	None	Strong	Medium	Weak	None	Strong	Medium	Weak	None	
Form	✓	✓			✓	✓							Evaluators' Names Date Christian Lynn 9/24/12
Line	✓	✓			✓	✓							
Color			✓	✓	✓	✓							
Texture			✓	✓	✓	✓							

SECTION C: MITIGATION

NARRATIVE/SKETCH: -Providing evergreen plant material along the south side of Route 203 would mitigate the visual impact to people travelling on the road.

SECTION D: SUMMARY

NARRATIVE: While the contrast from the proposed transmission line is high, when looking at it out of context, the presence of an existing line of similar characteristics greatly reduces the overall visual contrast.

**NEW YORK STATE ELECTRIC AND GAS CORPORATION
COLUMBIA COUNTY TRANSMISSION PROJECT**

VISUAL CONTRAST RATING FORM

Date: 9/21/12
Weather: Clear
Activity: Proposed 115kv transmission Line

1. Name of Observation Point: KOP 15 Siegel Klinekill Conservation Area - From Trail
2. Photo ID: IMG-698

SECTION A: PROPOSED ACTIVITY DESCRIPTION

	a. Landform / Water	b. Vegetation	c. Structure (General)
FORM	N/A	Small, Irregular	Bold, Solid, Tall
LINE	N/A	Weak, Soft	Bold, Continuous, Vertical
COLOR	N/A	N/A	Subtle colors, warm, (Lots of Light)
TEXTURE	N/A	N/A	Fine, Smooth, dense

SECTION B: CONTRAST RATING

SHORT TERM LONG TERM

1. DEGREE OF CONTRAST		FEATURES												3. Are there potential measures for mitigation? See description below. <input type="checkbox"/> YES <input checked="" type="checkbox"/> NO
		LAND / BODY WATER (1)				VEGETATION (2)				STRUCTURES (3)				
		Strong	Medium	Weak	None	Strong	Medium	Weak	None	Strong	Medium	Weak	None	
ELEMENTS	Form	✓	✓			✓	✓			✓	✓			Evaluator's Names Date Christian Lynn 9/27/2012
	Line		✓	✓		✓	✓					✓	✓	
	Color		✓	✓		✓	✓					✓	✓	
	Texture		✓	✓		✓	✓			✓	✓	✓	✓	

SECTION C: MITIGATION

NARRATIVE/SKETCH:

SECTION D: SUMMARY

NARRATIVE:

The proposed transmission lines as seen from the upper trail in the Klinekill Reservation creates a medium level of contrast. The existing lines, while slightly smaller previously contributed significant contrast and therefore the visual contrast from the new lines is significantly lessened. The clearing resulting from the additional transmission lines will create a negligible amount of contrast.

**NEW YORK STATE ELECTRIC AND GAS CORPORATION
COLUMBIA COUNTY TRANSMISSION PROJECT**

VISUAL CONTRAST RATING FORM

Date: 9/07/12
Weather: Clear, Sunny
Activity: Proposed 115kV Transmission Line

1. Name of Observation Point: KOP 16 - Waltermire Road (Address 142)
2. Photo ID: IMG 1127

SECTION A: PROPOSED ACTIVITY DESCRIPTION

	a. Landform / Water	b. Vegetation	c. Structure (General)
FORM	N/A	N/A	Long, Horizontal Smooth
LINE	N/A	N/A	Weak, Continuous Horizontal
COLOR	N/A	N/A	Cold, Subtle, dull
TEXTURE	N/A	N/A	Smooth, Fine Sparse

SECTION B: CONTRAST RATING

SHORT TERM LONG TERM

1. DEGREE OF CONTRAST		FEATURES												3. Are there potential measures for mitigation? See description below. <input checked="" type="checkbox"/> YES <input type="checkbox"/> NO
		LAND / BODY WATER (1)				VEGETATION (2)				STRUCTURES (3)				
		Strong	Medium	Weak	None	Strong	Medium	Weak	None	Strong	Medium	Weak	None	
ELEMENTS	Form			✓		✓	✓			✓	✓			Evaluator's Names Date Christian Lynn 9/27/12
	Line			✓		✓	✓			✓	✓			
	Color		✓			✓	✓					✓	✓	
	Texture			✓		✓	✓					✓	✓	

SECTION C: MITIGATION

NARRATIVE/SKETCH: Additional evergreen screening along the north side of Waltermire road would conceal the proposed transmission lines as seen from the road.

SECTION D: SUMMARY

NARRATIVE: The view of proposed activity from this location creates a medium amount of contrast. This particular view blocks the view of two support structures however a slightly different view might make the structures more exposed. The distance to the proposed line significantly softens the linear and bold form of the transmission line.

**NEW YORK STATE ELECTRIC AND GAS CORPORATION
COLUMBIA COUNTY TRANSMISSION PROJECT**

VISUAL CONTRAST RATING FORM

Date: 9/24/12
Weather: Partly Cloudy
Activity: Proposed 115kV Transmission Lines

1. Name of Observation Point: KOP 17 - Leggett Road (Looking South)
2. Photo ID: 003

SECTION A: PROPOSED ACTIVITY DESCRIPTION

	a. Landform / Water	b. Vegetation	c. Structure (General)
FORM	N/A	Amorphous Irregular	Bold, Prominent Linear
LINE	N/A	Weak, Broken	parallel, vertical Concave, Bold
COLOR	N/A	Natural, Earthy	Cool - Lines warm - Poles
TEXTURE	N/A	Rough	Solidly Smooth

SECTION B: CONTRAST RATING SHORT TERM LONG TERM

1. DEGREE OF CONTRAST		FEATURES												3. Are there potential measures for mitigation? See description below. <input checked="" type="checkbox"/> YES <input type="checkbox"/> NO
		LAND / BODY WATER (1)				VEGETATION (2)				STRUCTURES (3)				
		Strong	Medium	Weak	None	Strong	Medium	Weak	None	Strong	Medium	Weak	None	
ELEMENTS	Form	✓				✓				✓				Evaluator's Names Date Christian Lynn 9/27/12
	Line		✓			✓				✓				
	Color		✓			✓				✓				
	Texture	✓				✓				✓				

SECTION C: MITIGATION

NARRATIVE/SKETCH: Taller established vegetation along the south side of Leggett Road would help in mitigating the Short view.

SECTION D: SUMMARY

NARRATIVE: There is a medium to strong contrast created from the proposed transmission lines. While the scale of the proposed line is similar to the existing adjacent vegetation, the form and the boldness of the proposed line is of a distinct contrast.

**NEW YORK STATE ELECTRIC AND GAS CORPORATION
COLUMBIA COUNTY TRANSMISSION PROJECT**

VISUAL CONTRAST RATING FORM

Date: 9/24/2012
Weather: Clear, Sunny
Activity: Proposed 115kV Transmission Line

1. Name of Observation Point: KOP#19 - Old Post Road Looking West
2. Photo ID: TMG 008

SECTION A: PROPOSED ACTIVITY DESCRIPTION

	a. Landform / Water	b. Vegetation	c. Structure (General)
FORM	N/A	Amorphous, soft	Tall, Linear, Thin, Long
LINE	N/A	Irregular, weak	Straight, Vertical, Parallel, Continuous
COLOR	N/A	Subtle, subtle	Warm, Brown + Gray Hues Some dull lines
TEXTURE	N/A	Coarse, Patchy	Dense, Smooth, Bold

SECTION B: CONTRAST RATING

SHORT TERM LONG TERM

1. DEGREE OF CONTRAST		FEATURES												3. Are there potential measures for mitigation? See description below. <input type="checkbox"/> YES <input checked="" type="checkbox"/> NO	
		LAND / BODY WATER (1)				VEGETATION (2)				STRUCTURES (3)					
		Strong	Medium	Weak	None	Strong	Medium	Weak	None	Strong	Medium	Weak	None		
ELEMENTS	Form	✓	✓			✓	✓							✓	Evaluator's Names <u>Christian Lynn</u> Date <u>9/27/12</u>
	Line	✓	✓			✓	✓							✓	
	Color	✓	✓			✓	✓							✓	
	Texture	✓				✓								✓	

SECTION C: MITIGATION

NARRATIVE/SKETCH:

SECTION D: SUMMARY

NARRATIVE:

The Open field creates high contrast & draws attention to vertical structures. The presence of a solid and irregular background increases the attention payed to the tops of the proposed transmission lines. The simple and non-complex geometry is in contrast to the existing natural form.

**NEW YORK STATE ELECTRIC AND GAS CORPORATION
COLUMBIA COUNTY TRANSMISSION PROJECT**

VISUAL CONTRAST RATING FORM

Date: 9/21/2012
Weather: Clear, Sunny
Activity: Proposed 115kV Transmission Line

1. Name of Observation Point: KOP 19 - Looking North from Stockport Road
2. Photo ID: IMG 714

SECTION A: PROPOSED ACTIVITY DESCRIPTION

	a. Landform / Water	b. Vegetation	c. Structure (General)
FORM	N/A	N/A	Moderate, geometric, long vertical + horizontal
LINE	N/A	N/A	Straight, Parallel continuous vertical
COLOR	N/A	N/A	lines are muted + subtle. poles are emphasized w/ higher chrom
TEXTURE	N/A	N/A	Solid, bold, continuous Fine

SECTION B: CONTRAST RATING SHORT TERM LONG TERM

1. DEGREE OF CONTRAST		FEATURES												3. Are there potential measures for mitigation? See description below. <input checked="" type="checkbox"/> YES <input type="checkbox"/> NO
		LAND / BODY WATER (1)				VEGETATION (2)				STRUCTURES (3)				
		Strong	Medium	Weak	None	Strong	Medium	Weak	None	Strong	Medium	Weak	None	
ELEMENTS	Form	✓				✓						✓		Evaluator's Names Date <u>9/27/12</u> <u>Christian Lynn</u>
	Line		✓			✓						✓		
	Color				✓	✓						✓		
	Texture				✓	✓						✓		

SECTION C: MITIGATION

NARRATIVE/SKETCH:

Because of the significant amount of distance to the proposed lines, 6-10' plantings on the northern roadside would shield views of the lines.

SECTION D: SUMMARY

NARRATIVE:

The proposed structures do not create a strong degree of contrast. The proposed dual lines are separated significantly from the viewer and therefore reduces the overall contrast. The fact that the tree line in the background exceeds the height of the proposed structures makes them a less dominant feature. Depending on the clarity of the atmosphere the lines will be more or less in contrast.

**NEW YORK STATE ELECTRIC AND GAS CORPORATION
COLUMBIA COUNTY TRANSMISSION PROJECT**

VISUAL CONTRAST RATING FORM

Date: 11/6/12
Weather: Clear, Sunny
Activity: Proposed 115kV Transmission Lines

1. Name of Observation Point: KOP 20 - 397 Old Post Road Looking South
2. Photo ID: CIMG 0481

SECTION A: PROPOSED ACTIVITY DESCRIPTION

	a. Landform / Water	b. Vegetation	c. Structure (General)
FORM	N/A	N/A	Vertical, Linear
LINE	N/A	N/A	Crisp Horizontal + Vertical Lines
COLOR	N/A	N/A	Dark Bold Hues
TEXTURE	N/A	N/A	Solid + Smooth

SECTION B: CONTRAST RATING SHORT TERM LONG TERM

1. DEGREE OF CONTRAST	FEATURES												3. Are there potential measures for mitigation? See description below. <input checked="" type="checkbox"/> YES <input type="checkbox"/> NO
	LAND / BODY WATER (1)				VEGETATION (2)				STRUCTURES (3)				
	Strong	Medium	Weak	None	Strong	Medium	Weak	None	Strong	Medium	Weak	None	
ELEMENTS													Evaluator's Names: Christian Lynn Date: 11/9/2012
Form				✓				✓				✓	
Line				✓				✓				✓	
Color				✓				✓				✓	
Texture				✓				✓				✓	

SECTION C: MITIGATION

NARRATIVE/SKETCH: A row of evergreen vegetation along the southern edge of the property line would create permanent screening when the trees reach a height of 30'!

SECTION E: SUMMARY

NARRATIVE: The proposed transmission structures + lines will minimally impact the viewshed from the potentially historic property. The proposed line will be located approximately 1500' to the southwest. The transmission line will only be exposed during the winter months where the vegetative massing is less dense.

**NEW YORK STATE ELECTRIC AND GAS CORPORATION
COLUMBIA COUNTY TRANSMISSION PROJECT**

VISUAL CONTRAST RATING FORM

Date: 11/6/2012

Weather: Clear, Sunny

Activity: Propose 115kV Transmission Line

1. Name of Observation Point: KOP 21-#489 Old Post Road Looking East

2. Photo ID: CIMG-6801

SECTION A: PROPOSED ACTIVITY DESCRIPTION

	a. Landform / Water	b. Vegetation	c. Structure (General)
FORM	N/A	N/A	N/A
LINE	↓	↓	↓
COLOR			
TEXTURE			

SECTION B: CONTRAST RATING SHORT TERM LONG TERM

1. DEGREE OF CONTRAST	FEATURES												3. Are there potential measures for mitigation? See description below. <input type="checkbox"/> YES <input checked="" type="checkbox"/> NO
	LAND / BODY WATER (1)				VEGETATION (2)				STRUCTURES (3)				
	Strong	Medium	Weak	None	Strong	Medium	Weak	None	Strong	Medium	Weak	None	
Form				✓				✓				✓	Evaluator's Names Date <u>Christian Lynn</u> <u>11/9/12</u>
Line				✓				✓				✓	
Color				✓				✓				✓	
Texture				✓				✓				✓	

SECTION C: MITIGATION

NARRATIVE/SKETCH:

N/A

SECTION E: SUMMARY

NARRATIVE:

There will be no visual impact.
Multiple layers of vegetation + topography between
-from viewpoint + transmission line will obstruct views
in all seasons.

**NEW YORK STATE ELECTRIC AND GAS CORPORATION
COLUMBIA COUNTY TRANSMISSION PROJECT**

VISUAL CONTRAST RATING FORM

Date: 11/6/2012
 Weather: Clear, Sunny
 Activity: Proposed 115kV Transmission Line

1. Name of Observation Point: KOP 22 - 2268
 2. Photo ID: CIMG 6745

SECTION A: PROPOSED ACTIVITY DESCRIPTION

	a. Landform / Water	b. Vegetation	c. Structure (General)
FORM	N/A	N/A	N/A
LINE	↓	↓	↓
COLOR	↓	↓	↓
TEXTURE	↓	↓	↓

SECTION B: CONTRAST RATING

SHORT TERM LONG TERM

1. DEGREE OF CONTRAST	FEATURES												3. Are there potential measures for mitigation? See description below. <input type="checkbox"/> YES <input checked="" type="checkbox"/> NO
	LAND / BODY WATER (1)				VEGETATION (2)				STRUCTURES (3)				
	Strong	Medium	Weak	None	Strong	Medium	Weak	None	Strong	Medium	Weak	None	
Form				/				/				/	Evaluator's Names: Christian Lynn Date: 11/9/2012
Line				/				/				/	
Color				/				/				/	
Texture				/				/				/	

SECTION C: MITIGATION

NARRATIVE/SKETCH:

N/A

SECTION E: SUMMARY

NARRATIVE:

There will be no visual impact from the proposed transmission lines.

**NEW YORK STATE ELECTRIC AND GAS CORPORATION
COLUMBIA COUNTY TRANSMISSION PROJECT**

VISUAL CONTRAST RATING FORM

Date: 11/6/2012
 Weather: Clear, Sunny
 Activity: Proposed 115kV Transmission Line

1. Name of Observation Point: KOP 23 - Christ Evangelical Church, Ghent NY
 2. Photo ID: CIMG 6729

SECTION A: PROPOSED ACTIVITY DESCRIPTION

	a. Landform / Water	b. Vegetation	c. Structure (General)
FORM	N/A	N/A	N/A
LINE	↓	↓	↓
COLOR			
TEXTURE			

SECTION B: CONTRAST RATING

SHORT TERM LONG TERM

1. DEGREE OF CONTRAST	FEATURES												3. Are there potential measures for mitigation? See description below. <input type="checkbox"/> YES <input type="checkbox"/> NO	
	LAND / BODY WATER (1)				VEGETATION (2)				STRUCTURES (3)					
	Strong	Medium	Weak	None	Strong	Medium	Weak	None	Strong	Medium	Weak	None		
Form				✓				✓				✓		Evaluator's Names <u>Christian Lynn</u> Date <u>11/9/12</u>
Line				✓			✓				✓			
Color				✓			✓				✓			
Texture				✓			✓				✓			

SECTION C: MITIGATION

NARRATIVE/SKETCH:

N/A

SECTION E: SUMMARY

NARRATIVE:

There will be no visual impact from this viewpoint.

**NEW YORK STATE ELECTRIC AND GAS CORPORATION
COLUMBIA COUNTY TRANSMISSION PROJECT**

VISUAL CONTRAST RATING FORM

Date: 11/6/2012
 Weather: Clear, Sunny
 Activity: Proposed 115kV Transmission Line

1. Name of Observation Point: KOP 24 - #115 on Route 213 Looking East
 2. Photo ID: CIMG 6729

SECTION A: PROPOSED ACTIVITY DESCRIPTION

	a. Landform / Water	b. Vegetation	c. Structure (General)
FORM	N/A	N/A	N/A
LINE	↓	↓	↓
COLOR			
TEXTURE	↓	↓	↓

SECTION B: CONTRAST RATING

SHORT TERM LONG TERM

1. DEGREE OF CONTRAST		FEATURES												3. Are there potential measures for mitigation? See description below. <input type="checkbox"/> YES <input checked="" type="checkbox"/> NO		
		LAND / BODY WATER (1)				VEGETATION (2)				STRUCTURES (3)						
		Strong	Medium	Weak	None	Strong	Medium	Weak	None	Strong	Medium	Weak	None			
ELEMENTS	Form				✓					✓					Evaluator's Names <u>Christian Lynn</u>	Date <u>11/9/2012</u>
	Line				✓					✓						
	Color				✓					✓						
	Texture				✓					✓						

SECTION C: MITIGATION

NARRATIVE/SKETCH:

N/A

SECTION E: SUMMARY

NARRATIVE:

The visibility of the proposed transmission line is fully obstructed by topography. There will be no visual impact from this location.

Columbia County Transmission Project
Visual Impact Analysis

Appendix E
Photo Simulations

KOP 1 - Siegel Kline Kill Conservation Area



Existing



Proposed

KOP 5 - Vanvalkenburgh Isbister Farm Looking North



Existing



Proposed

KOP 3b - Art OMI Visitor's Center



Existing



Proposed

KOP 7 - West Ghent Cemetery



Existing



Proposed

KOP 13 - Route 203 Looking South



Existing



Proposed

KOP 15 - Siegel Kline Kill Conservation Area Looking Northeast from Trail



Existing



Proposed

KOP 16 - #142 Waltermire Road Looking North



Existing



Proposed

KOP 17 - Leggett Road Looking South



Existing



Proposed

KOP 18 - Old Post Road Looking West



Existing



Proposed

KOP 19 - Stockport Road Looking North



Existing



Proposed

KOP 20 - #397 Old Post Road Looking Southwest



Existing



Proposed

KOP 21 - #489 Old Post Road Looking East



Existing



Proposed

KOP 22 - #2268 Route 66 in Chatham Looking West



Existing



Proposed

KOP 23 - Looking West from the Christ Evangelical Church on Route 66, Ghent



Existing



Proposed

KOP 24 - #116 Route 21B Looking East



Existing



Proposed

Columbia County Transmission Project
Visual Impact Analysis

Appendix F
Supplemental
Leaf-Off Photo Simulations

KOP 3b - Art OMI Visitor's Center



Existing



Proposed

KOP 7 - West Ghent Cemetery



Existing



Proposed

KOP 16 - 142 Waltermire Road Looking North



Existing



Proposed

KOP 18 - 349 Old Post Road Looking West



Existing



Proposed