



Consolidated Edison Company
of New York, Inc.
4 Irving Place
New York NY 10003
www.conEd.com

January 12, 2016

Honorable Kathleen H. Burgess
Secretary
New York State Public Service Commission
3 Empire State Plaza, 19th Floor
Albany, New York 12223

RE: Case 13-G-0031, Con Edison's Gas Rate Case Filing

Dear Secretary Burgess:

An affidavit and copies of the published notice are attached, affirming that notice was published in the New York Post on December 9, 16, 23, and 30, 2015, regarding Con Edison's rate changes and other tariff changes for Rate Year 3, made pursuant to the three-year Gas Rate Plan in Case 13-G-0031. The tariff changes were filed on December 2, 2015, and are proposed to become effective on January 1, 2016.

Sincerely,

/s/ William A. Atzl, Jr.
Director
Rate Engineering Department

98524

State of New York | ss:
COUNTY OF NEW YORK

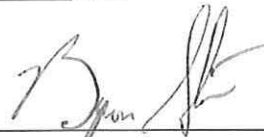
Margaret Varrore being duly sworn,
says that he/she is the principal Clerk of the Publisher
of the

New York Post

a daily newspaper of general circulation printed and
published in the English language, in the County
of New York, State of New York; that advertisement
hereto annexed has been regularly published in
the said "NEW YORK POST" once,
on the 9, 16, 23, 30 day of December 2015

Margaret Varrore

Sworn to before me this 30 day
of December 2015



NOTARY PUBLIC

BYRON STEVENS
Notary Public, State of New York
No. 01ST6117803
Qualified in New York County
Commission Expires November 1, 2016

Job # 1420

Guac the line

For Chipotle fans still ordering up after latest health scare, burritos trump fear

YOU can pick your salsas, but you can't choose your food-borne illness. Following an E. coli epidemic at 11 West coast Chipotle Mexican Grill locations this fall, 80 customers of the fast-casual eatery fell ill in the Boston area over the weekend. The likely culprit? Norovirus. But all the bad news isn't deterring some burrito lovers. The West 48th Street Chipotle was still bustling at lunchtime on Tuesday, with brave patrons still buying burritos and bowls despite the outbreaks — as well as a "grade pending" sign on the window and the always pesky extra charge for guacamole.



"I've been coming [to this location] for a year, and I've never felt sick. The ingredients always seem fresh. I trust this location ... I don't know about Boston."
— Pamela Zhuklevich, 36, executive assistant, Hastings-on-Hudson



"Honestly, I'm not worried. I worked at a Chipotle in college, at Miami University in Ohio. I ate there every day. I come here three times a week, or whenever I forget my lunch. I'm going to keep coming. I love Chipotle so much, it's part of my life."

— Neil McGiffin, 26, recruiter, East Harlem

"What?! No, I didn't hear the news. But I'm still going to eat [my steak burrito] and just pray to God. It's affordable — maybe if I get a promotion I might stop eating here."



— Joel Okpala, 30, architect, Upper East Side



"Chipotle serves 750,000 people a day, so that's a whole heck of a lot of people who aren't getting sick. At least that's the way I rationalize it."

— Michael James, 31, sports business analyst, Jersey City

— Claudine Ko

GIFT OF THE DAY

OLIVE IT!

There's good fat and bad fat, but this rare olive oil is a great one. Made on historic farms near the Adriatic Sea in Italy, it's used at some of the city's top Italian restaurants, including Del Posto and Marta. Olio Fresco Novello olive oil, \$34.95. abruzzoapantry.com.

— Haley Goldberg



Chef Jean-Georges Vongerichten will open a vegetarian restaurant early next year.

Gabi Porter

JEAN-GEORGES' RECIPE! BUTTERNUT SQUASH WITH CHILI PANKO CRUMBS

Looking to cook up a wholesome winter meal between holiday parties? Vongerichten shares this gourd-geous squash recipe.

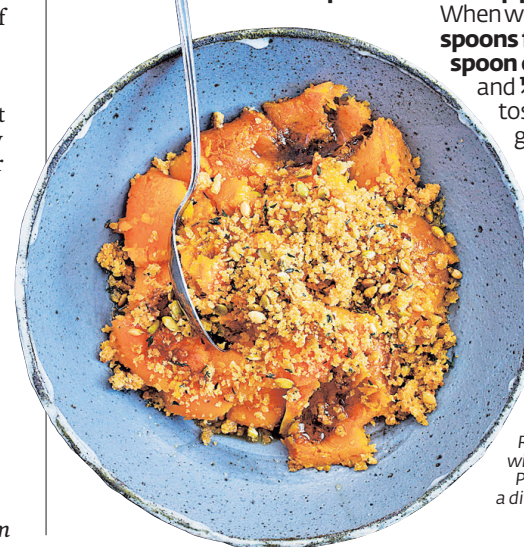
In a large stockpot full of water, boil 1 large butternut squash (about 2½ pounds), partially covered, until tender, about 45 minutes.

Drain, cool slightly, then remove and discard the stem and peel. Reserve the seeds, removing and discarding the strings.

Transfer the flesh to a large serving dish and mash with a fork into an even layer. Drizzle 2 tablespoons balsamic vinegar and 2 tablespoons

olive oil over the squash, and season with salt and pepper. Heat 3 tablespoons of the squash seeds in a skillet over medium-low heat until dry. Add 1 tablespoon olive oil and a pinch of salt and toast, tossing occasionally. When seeds begin to pop, partially cover pan.

Continue toasting until golden brown, about 3 minutes, then transfer to a plate. In the same skillet, heat 2 tablespoons olive oil over medium heat, then toss in 1 cup panko bread crumbs. When well coated, stir in 1½ teaspoons fresh thyme, ½ teaspoon crushed red chili flakes and ¼ teaspoon salt. Toast, tossing occasionally until golden brown and fragrant, about 5 minutes. Remove from the heat and stir in ¼ cup of freshly grated Parmigiano-Reggiano cheese and toasted seeds. Spread the crumb mixture over the squash in an even layer and serve immediately. Serves 8.



Reprinted from "Home Cooking with Jean-Georges." © 2011. Published by Clarkson Potter, a division of Random House, Inc.

scuozzo@nypost.com

WFP in Hill snub

Endorses Bernie

By CARL CAMPANILE



BERNIE SANDERS Eyed for "revolution."

There's another reason for Hillary Clinton to be annoyed with Mayor de Blasio: His pals at the Working Families Party endorsed Democratic rival Sen. Bernie Sanders for president on Tuesday. It's the first time the left-leaning party has taken sides in a Democratic primary for president since its formation in 1998.

De Blasio finally endorsed Clinton, his former boss, on Oct. 30 — months after virtually every major elected Democrat in New York had already lined up with the state's former senator.

But Working Families director Dan Cantor, a Park Slope confidant of the mayor, said the party believes Sanders is more equipped than Clinton to address inequality.

"We want to live in a nation that allows all people to live a decent life, no matter what is in their parents' bank account or who is in their family tree," Cantor said.

"But the super-rich have used their economic muscle to buy political muscle, and unless you're one of them, what you think government should do basically doesn't count," he added. "That's why we're stand-

ing with Bernie Sanders to build the political revolution and make our nation into one where every family can thrive."

The party is bankrolled and largely influenced by the state's powerful unions.

Last year, de Blasio and union bosses intervened to help deliver the party line to Gov. Cuomo, despite grass-roots support for Democratic Party challenger Zephyr Teachout.

The WFP's credibility took a hit, but Cuomo has since moved to the left on pet party issues such as boosting the minimum wage.

"The party is trying to restore its progressive credentials," an insider said.

The WFP said it based its endorsement on an online poll in which Sanders received 87 percent, versus 12 percent for Clinton.

Central Pk. robbery

A group of men robbed two women at gunpoint in Central Park on Monday night, according to police.

Chandra Eaton, 45, and Rachel Kieselburg, 26, were walking along the jogging path near West 91st Street and West Drive at around 11:30 p.m. when four men approached them.

Two of the thieves, one in a full-faced ski mask, pulled out guns and demanded the women's purses, cops said. An off-duty cop spotted the

suspects dumping out the contents of one of the bags, and tried to chase them down, law-enforcement sources said.

But he was unable to stop them, losing sight of the thugs as they headed south along the reservoir.

There have been no arrests, but police did find an abandoned ski mask and other clothing they believe belong to the robbers.

Daniel Prendergast and Vinita Singla

Con Edison Files Gas Rate Changes in Accordance With Three-Year Rate Plan

On February 21, 2014, the New York Public Service Commission ("PSC") adopted a three-year gas rate plan for Con Edison (or the "Company") that provides for no overall change in the Company's firm gas delivery revenues in each of three rate years commencing January 1, 2014, 2015 and 2016. This result was accomplished by leveling the Commission-approved decreased revenue requirement for Rate Year ("RY") 1 and increased revenue requirements for RY2 and RY3. Although overall delivery revenues for the firm service classes, as a whole, are unchanged in each rate year, there are increases and decreases in the rates charged for delivery service for individual service classes. The rate changes for RY3 will become effective on January 1, 2016.

For RY3 (the RY commencing January 1, 2016), the Company is filing base rates that will remain in effect at the end of RY3 absent a new rate plan. These rates are \$40.856 million (less gross receipts tax) higher to reflect what the rates would be after RY3 absent levelization. During RY3, the increase will be offset by class-specific temporary credits totaling the same amount. The class-specific temporary credits are described in new General Information Section IX.21 of the Gas Tariff and shown on the Statement of Temporary Rate Adjustment.

The following tables show the effect of the gas rate changes for RY3 on selected monthly bills of customers served under Service Classification ("SC") 1, 2 and 3 of P.S.C. No. 9 – Gas:

FIRM SALES CUSTOMERS

Monthly Usage	SC No. 1 (Residential & Religious)		SC No. 2 (General Non-Heating)		SC No. 2 (General Heating)		SC No. 3 (Residential & Religious-Heating)	
	Present	Proposed	Present	Proposed	Present	Proposed	Present	Proposed
In Therms								
3	\$ 22.12	\$ 22.12	\$ 34.41	\$ 34.41	\$ 34.41	\$ 34.41	\$ 23.99	\$ 23.98
10	34.09	34.18	44.38	44.48	44.39	44.33	34.69	34.67
20	51.17	51.41	58.62	58.89	58.65	58.48	49.97	49.96
30	68.27	68.67	72.87	73.28	72.90	72.63	65.25	65.23
50	102.45	103.13	101.38	102.08	101.40	100.92	95.81	95.78
90	170.81	172.10	158.37	159.67	158.42	157.54	156.95	156.87
150	273.36	275.53	226.54	228.38	231.10	229.81	236.96	236.87
300	529.71	534.11	396.96	400.16	412.83	410.47	437.03	436.85
500	871.51	878.89	624.18	629.19	655.13	651.36	703.77	703.48
1,000	1,726.04	1,740.84	1,192.24	1,201.78	1,260.87	1,253.59	1,370.64	1,370.09
2,000	3,435.07	3,464.75	2,328.36	2,346.94	2,472.36	2,458.05	2,704.35	2,703.28
3,000	5,144.11	5,188.65	3,464.47	3,492.11	3,683.85	3,662.51	4,038.08	4,036.48

The gas bills shown in the tables above assume normal weather. In addition to gas delivery charges and other applicable surcharges, these bills include other projected charges, such as gas supply charges and New York City revenue taxes. Sales taxes are not included in these tables.

If you live in Westchester County (except the City of Yonkers), your bills will be slightly lower than shown because of lower revenue taxes. If you live in the City of Yonkers, your bills will be slightly higher than shown above because of higher revenue taxes. If a firm customer receives a bill that includes periods before and on and after January 1, 2016, rates will be prorated depending on the number of days of service before and on and after that date.

The monthly minimum charge for SC 12 Rate 1 interruptible and its transportation equivalent under SC 9 has been increased to \$100.00. The Company has also updated the allowed line loss factor for RY3 to 2.063 percent.

The Company's rate schedule can be viewed on the PSC's website at www.dps.ny.gov/tariffs. The tariff filing can be viewed on the PSC's website, www.dps.ny.gov, by searching under Case 13-G-0031. If you do not have access to the Internet, you can view complete copies of Con Edison's tariff amendments at the PSC's office at 90 Church Street, New York, New York 10007 and at offices where applications for Con Edison service may be made.

CONSOLIDATED EDISON COMPANY OF NEW YORK, INC.

Con Edison Files Gas Rate Changes in Accordance With Three-Year Rate Plan

On February 21, 2014, the New York Public Service Commission ("PSC") adopted a three-year gas rate plan for Con Edison (or the "Company") that provides for no overall change in the Company's firm gas delivery revenues in each of three rate years commencing January 1, 2014, 2015 and 2016. This result was accomplished by leveling the Commission-approved decreased revenue requirement for Rate Year ("RY") 1 and increased revenue requirements for RY2 and RY3. Although overall delivery revenues for the firm service classes, as a whole, are unchanged in each rate year, there are increases and decreases in the rates charged for delivery service for individual service classes. The rate changes for RY3 will become effective on January 1, 2016.

For RY3 (the RY commencing January 1, 2016), the Company is filing base rates that will remain in effect at the end of RY3 absent a new rate plan. These rates are \$40.856 million (less gross receipts tax) higher to reflect what the rates would be after RY3 absent levelization. During RY3, the increase will be offset by class-specific temporary credits totaling the same amount. The class-specific temporary credits are described in new General Information Section IX.21 of the Gas Tariff and shown on the Statement of Temporary Rate Adjustment.

The following tables show the effect of the gas rate changes for RY3 on selected monthly bills of customers served under Service Classification ("SC") 1, 2 and 3 of P.S.C. No. 9 - Gas:

FIRM SALES CUSTOMERS

Monthly Usage	SC No. 1 (Residential & Religious)		SC No. 2 (General Non-Heating)		SC No. 2 (General Heating)		SC No. 3 (Residential & Religious-Heating)	
	Present	Proposed	Present	Proposed	Present	Proposed	Present	Proposed
In Therms								
3	\$ 22.12	\$ 22.12	\$ 34.41	\$ 34.41	\$ 34.41	\$ 34.41	\$ 23.99	\$ 23.98
10	34.09	34.18	44.38	44.48	44.39	44.33	34.69	34.67
20	51.17	51.41	58.62	58.89	58.65	58.48	49.97	49.96
30	68.27	68.67	72.87	73.28	72.90	72.63	65.25	65.23
50	102.45	103.13	101.38	102.08	101.40	100.92	95.81	95.78
90	170.81	172.10	158.37	159.67	158.42	157.54	156.95	156.87
150	273.36	275.53	226.54	228.38	231.10	229.81	236.96	236.87
300	529.71	534.11	396.96	400.16	412.83	410.47	437.03	436.85
500	871.51	878.89	624.18	629.19	655.13	651.36	703.77	703.48
1,000	1,726.04	1,740.84	1,192.24	1,201.78	1,260.87	1,253.59	1,370.64	1,370.09
2,000	3,435.07	3,464.75	2,328.36	2,346.94	2,472.36	2,458.05	2,704.35	2,703.28
3,000	5,144.11	5,188.65	3,464.47	3,492.11	3,683.85	3,662.51	4,038.08	4,036.48

The gas bills shown in the tables above assume normal weather. In addition to gas delivery charges and other applicable surcharges, these bills include other projected charges, such as gas supply charges and New York City revenue taxes. Sales taxes are not included in these tables.

If you live in Westchester County (except the City of Yonkers), your bills will be slightly lower than shown because of lower revenue taxes. If you live in the City of Yonkers, your bills will be slightly higher than shown above because of higher revenue taxes. If a firm customer receives a bill that includes periods before and on and after January 1, 2016, rates will be prorated depending on the number of days of service before and on and after that date.

The monthly minimum charge for SC 12 Rate 1 interruptible and its transportation equivalent under SC 9 has been increased to \$100.00. The Company has also updated the allowed line loss factor for RY3 to 2.063 percent.

The Company's rate schedule can be viewed on the PSC's website at www.dps.ny.gov/tariffs. The tariff filing can be viewed on the PSC's website, www.dps.ny.gov, by searching under Case 13-G-0031. If you do not have access to the Internet, you can view complete copies of Con Edison's tariff amendments at the PSC's office at 90 Church Street, New York, New York 10007 and at offices where applications for Con Edison service may be made.

CONSOLIDATED EDISON COMPANY OF NEW YORK, INC.

Buses in 'slow' gear Late runs soaring

By DANIELLE FURFARO
Transit Reporter

The number of chronically unreliable city buses jumped 68 percent in the past year, according to a new study.

There are now 32 major MTA bus routes that regularly operate with notable gaps in service, making it impossible for riders to plan their commutes, according to the Straphangers Campaign, which released its annual Pokey Awards Tuesday.

That number is up from last year, when only 19 bus routes were deemed chronically unreliable.

"Their unhappy subjects, the riders, must endure the tyranny of frequent and long waits, followed by a parade of buses that pass by in bunches, like a herd of lumbering elephants," said Paul Steely White, executive director of Transportation Alternatives.

The buses most commonly bunched up are the M1, which runs from

the East Village to Harlem, and the combined M101, M102 and M103. The study says 37 percent of those buses do not arrive on time.

The awards also track the city's slowest buses. This year, the distinction went to the M66 cross-town bus, which travels at an average glacial 3.1 mph.

The most glaring reason for the shambling buses is the growing congestion, said White.

"The congestion around the city keeps creeping up, and it is causing problems," he said.

MTA officials said they are working on ways to get buses moving faster, but it's going to take cooperation from the city.

"We are continuing to work with the New York City Department of Transportation to increase the number of bus lanes and locations where buses would have traffic signal priority, further improving bus speeds," said spokesman Adam Lisberg.

New guests at space sta. Honduran pol in NYC court

MOSCOW — A Russian spacecraft carrying three astronauts from the United States, Britain and Russia docked Tuesday at the International Space Station.

NASA's live broadcast from the Russian Mission Control showed the Soyuz spacecraft mooring at the space outpost at 12:33 a.m. New York time, about 6½ hours after lifting off from the Baikonur launch pad in Kazakhstan.

The Soyuz TMA-19 M was carrying Russian Yuri Malenchenko, Timothy Kopra of NASA and Briton Timothy Peake, representing the European Space Agency. AP

A former president of Honduras appeared in a New York court on Tuesday amid the sprawling investigation of bribes and kickbacks involving FIFA, soccer's governing body.

Rafael Callejas pleaded not guilty to bribery charges in Brooklyn federal court through his lawyer.

Callejas came to New York on the advice of his lawyers, Honduran official said.

Callejas served as president of Honduras from 1990 to 1994. He's a current member of FIFA's television and marketing committee.

About 20 soccer officials have been indicted. AP

Con Edison Files Gas Rate Changes in Accordance With Three-Year Rate Plan

On February 21, 2014, the New York Public Service Commission (“PSC”) adopted a three-year gas rate plan for Con Edison (or the “Company”) that provides for no overall change in the Company’s firm gas delivery revenues in each of three rate years commencing January 1, 2014, 2015 and 2016. This result was accomplished by leveling the Commission-approved decreased revenue requirement for Rate Year (“RY”) 1 and increased revenue requirements for RY2 and RY3. Although overall delivery revenues for the firm service classes, as a whole, are unchanged in each rate year, there are increases and decreases in the rates charged for delivery service for individual service classes. The rate changes for RY3 will become effective on January 1, 2016.

For RY3 (the RY commencing January 1, 2016), the Company is filing base rates that will remain in effect at the end of RY3 absent a new rate plan. These rates are \$40.856 million (less gross receipts tax) higher to reflect what the rates would be after RY3 absent levelization. During RY3, the increase will be offset by class-specific temporary credits totaling the same amount. The class-specific temporary credits are described in new General Information Section IX.21 of the Gas Tariff and shown on the Statement of Temporary Rate Adjustment.

The following tables show the effect of the gas rate changes for RY3 on selected monthly bills of customers served under Service Classification (“SC”) 1, 2 and 3 of P.S.C. No. 9 – Gas:

FIRM SALES CUSTOMERS

Monthly Usage	SC No. 1 (Residential & Religious)		SC No. 2 (General Non-Heating)		SC No. 2 (General Heating)		SC No. 3 (Residential & Religious-Heating)	
	Present	Proposed	Present	Proposed	Present	Proposed	Present	Proposed
In Therms								
3	\$ 22.12	\$ 22.12	\$ 34.41	\$ 34.41	\$ 34.41	\$ 34.41	\$ 23.99	\$ 23.98
10	34.09	34.18	44.38	44.48	44.39	44.33	34.69	34.67
20	51.17	51.41	58.62	58.89	58.65	58.48	49.97	49.96
30	68.27	68.67	72.87	73.28	72.90	72.63	65.25	65.23
50	102.45	103.13	101.38	102.08	101.40	100.92	95.81	95.78
90	170.81	172.10	158.37	159.67	158.42	157.54	156.95	156.87
150	273.36	275.53	226.54	228.38	231.10	229.81	236.96	236.87
300	529.71	534.11	396.96	400.16	412.83	410.47	437.03	436.85
500	871.51	878.89	624.18	629.19	655.13	651.36	703.77	703.48
1,000	1,726.04	1,740.84	1,192.24	1,201.78	1,260.87	1,253.59	1,370.64	1,370.09
2,000	3,435.07	3,464.75	2,328.36	2,346.94	2,472.36	2,458.05	2,704.35	2,703.28
3,000	5,144.11	5,188.65	3,464.47	3,492.11	3,683.85	3,662.51	4,038.08	4,036.48

The gas bills shown in the tables above assume normal weather. In addition to gas delivery charges and other applicable surcharges, these bills include other projected charges, such as gas supply charges and New York City revenue taxes. Sales taxes are not included in these tables.

If you live in Westchester County (except the City of Yonkers), your bills will be slightly lower than shown because of lower revenue taxes. If you live in the City of Yonkers, your bills will be slightly higher than shown above because of higher revenue taxes. If a firm customer receives a bill that includes periods before and on and after January 1, 2016, rates will be prorated depending on the number of days of service before and on and after that date.

The monthly minimum charge for SC 12 Rate 1 interruptible and its transportation equivalent under SC 9 has been increased to \$100.00. The Company has also updated the allowed line loss factor for RY3 to 2.063 percent.

The Company’s rate schedule can be viewed on the PSC’s website at www.dps.ny.gov/tariffs. The tariff filing can be viewed on the PSC’s website, www.dps.ny.gov, by searching under Case 13-G-0031. If you do not have access to the Internet, you can view complete copies of Con Edison’s tariff amendments at the PSC’s office at 90 Church Street, New York, New York 10007 and at offices where applications for Con Edison service may be made.

CONSOLIDATED EDISON COMPANY OF NEW YORK, INC.

Trump is off Cruz control

GOP race tightens

By MARISA SCHULTZ
Post Correspondent

timately, I’m sure the peace will end.”

WASHINGTON — Ted Cruz is snapping at the heels of Donald Trump for the Republican presidential nomination just six weeks before voting begins in Iowa, according to a poll released on Tuesday.

Already ahead in the Hawkeye State, the Texas senator is within 4 percentage points of the longtime GOP leader, with 24 percent of the vote to Trump’s 28 percent, the Quinnipiac University poll found.

Cruz’s surge — he’s up 8 percentage points since Dec. 2 — came after a strong performance in last week’s GOP debate in Las Vegas, where 40 percent of voters said he “did the best job.”

Only twenty percent said Trump was the debate champ.

The two front-runners have been chummy all year, but Trump predicted on Monday it’s only a matter of time before they clash.

“It’s probably going to come down to me against him,” Trump told NBC. “UI-

The only other candidates in double digits were Florida Sen. Marco Rubio, at 12 percent, and Ben Carson at 10 percent.

More than half of Republican voters in the poll — 58 percent — said they could be persuaded to back another candidate, meaning there might well be more shifts before the Iowa caucuses on Feb. 1.

The latest poll raises red flags for Trump regarding the general election — 50 percent of all voters said they’d be “embarrassed” if he became president, while 35 percent said they’d be red-faced with Hillary Clinton in the White House.

“Half of American voters say they’d be embarrassed to have Donald Trump as their commander in chief, and most Americans think he doesn’t have a good chance in November. But there he is, still at the top of the Republican heap,” said pollster Tim Malloy.

Clinton outpaced Sen. Bernie Sanders 61 to 30 percent among Democrats.

1M Euro refugees

GENEVA — More than 1 million refugees and “irregular migrants” have entered Europe in this record-breaking year, the International Organization for Migration said Tuesday.

With just nine days left in 2015, the Geneva-based intergovernmental organization said 1,005,504 people had entered Europe as of Monday, more than four times as many as last year. Almost all came by sea,

while 3,692 others drowned trying to make the crossing.

The IOM compiles the numbers from government records in Greece, Italy, Bulgaria, Spain, Malta and Cyprus, spokesman Joel Millman said.

He noted that the real number of people entering Europe may be even larger, because, given the sheer volume, authorities are struggling to track all arrivals. *Post Wire Services*

Con Edison Files Gas Rate Changes in Accordance With Three-Year Rate Plan

On February 21, 2014, the New York Public Service Commission ("PSC") adopted a three-year gas rate plan for Con Edison (or the "Company") that provides for no overall change in the Company's firm gas delivery revenues in each of three rate years commencing January 1, 2014, 2015 and 2016. This result was accomplished by leveling the Commission-approved decreased revenue requirement for Rate Year ("RY") 1 and increased revenue requirements for RY2 and RY3. Although overall delivery revenues for the firm service classes, as a whole, are unchanged in each rate year, there are increases and decreases in the rates charged for delivery service for individual service classes. The rate changes for RY3 will become effective on January 1, 2016.

For RY3 (the RY commencing January 1, 2016), the Company is filing base rates that will remain in effect at the end of RY3 absent a new rate plan. These rates are \$40.856 million (less gross receipts tax) higher to reflect what the rates would be after RY3 absent levelization. During RY3, the increase will be offset by class-specific temporary credits totaling the same amount. The class-specific temporary credits are described in new General Information Section IX.21 of the Gas Tariff and shown on the Statement of Temporary Rate Adjustment.

The following tables show the effect of the gas rate changes for RY3 on selected monthly bills of customers served under Service Classification ("SC") 1, 2 and 3 of P.S.C. No. 9 - Gas:

FIRM SALES CUSTOMERS

Monthly Usage	SC No. 1 (Residential & Religious)		SC No. 2 (General & Non-Heating)		SC No. 2 (General Heating)		SC No. 3 (Residential & Religious-Heating)	
	Present	Proposed	Present	Proposed	Present	Proposed	Present	Proposed
In Therms								
3	\$ 22.12	\$ 22.12	\$ 34.41	\$ 34.41	\$ 34.41	\$ 34.41	\$ 23.99	\$ 23.98
10	34.09	34.18	44.38	44.48	44.39	44.33	34.69	34.67
20	51.17	51.41	58.62	58.89	58.65	58.48	49.97	49.96
30	68.27	68.67	72.87	73.28	72.90	72.63	65.25	65.23
50	102.45	103.13	101.38	102.08	101.40	100.92	95.81	95.78
90	170.81	172.10	158.37	159.67	158.42	157.54	156.95	156.87
150	273.36	275.53	226.54	228.38	231.10	229.81	236.96	236.87
300	529.71	534.11	396.96	400.16	412.83	410.47	437.03	436.85
500	871.51	878.89	624.18	629.19	655.13	651.36	703.77	703.48
1,000	1,726.04	1,740.84	1,192.24	1,201.78	1,260.87	1,253.59	1,370.64	1,370.09
2,000	3,435.07	3,464.75	2,328.36	2,346.94	2,472.36	2,458.05	2,704.35	2,703.28
3,000	5,144.11	5,188.65	3,464.47	3,492.11	3,683.85	3,662.51	4,038.08	4,036.48

The gas bills shown in the tables above assume normal weather. In addition to gas delivery charges and other applicable surcharges, these bills include other projected charges, such as gas supply charges and New York City revenue taxes. Sales taxes are not included in these tables.

If you live in Westchester County (except the City of Yonkers), your bills will be slightly lower than shown because of lower revenue taxes. If you live in the City of Yonkers, your bills will be slightly higher than shown above because of higher revenue taxes. If a firm customer receives a bill that includes periods before and on and after January 1, 2016, rates will be prorated depending on the number of days of service before and on and after that date.

The monthly minimum charge for SC 12 Rate 1 interruptible and its transportation equivalent under SC 9 has been increased to \$100.00. The Company has also updated the allowed line loss factor for RY3 to 2.063 percent.

The Company's rate schedule can be viewed on the PSC's website at www.dps.ny.gov/tariffs. The tariff filing can be viewed on the PSC's website, www.dps.ny.gov, by searching under Case 13-G-0031. If you do not have access to the Internet, you can view complete copies of Con Edison's tariff amendments at the PSC's office at 90 Church Street, New York, New York 10007 and at offices where applications for Con Edison service may be made.

CONSOLIDATED EDISON COMPANY OF NEW YORK, INC.

NEW YORK POST

HOW OUR READERS CAN HELP



You can help the children of Detective Joseph Lemm via the Silver Shield Foundation, which will cover their college tuition.

Lemm, who was killed by a suicide bomber in Afghanistan on Dec. 21, left behind a 4-year-old son, Ryan, and 17-year-old stepdaughter, Brooke.

The Silver Shield Foundation was launched in 1982 by late New York Yankees owner George Steinbrenner for the families of NYPD officers and FDNY firefighters who lose their lives in the line of duty.

You can make a contribution at silvershieldfoundation.org/donate or send it to: Silver Shield Foundation, 870 UN Plaza, 1st Floor, New York, NY 10017



'Superman' tot grieves

By FRANK ROSARIO and PHILIP MESSING

The 4-year-old son of the NYPD detective killed last week while serving as an Air National Guardsman in Afghanistan cried, "Oh, Daddy, Daddy!" repeatedly at the hero's wake in a Westchester church Tuesday.

Little Ryan Lemm's sorrowful wails were heard by hundreds paying their respects at the wake of Joseph "Superman" Lemm, 45, who was among six service members killed by a Taliban suicide bomber.

Mourners began queuing up outside St. Anthony of Padua Church, in Lemm's adopted hometown of West Harrison before the 2 p.m. service, and the line soon snaked around the block. Military personnel

were among the first to enter, followed by members of the NYPD and others.

"This is just the worst thing that could have happened to this family," said one friend, who declined to give his name.

"He had the biggest heart. It's beyond tragic that we lost Joe. I don't think anyone has the words to describe what we're all feeling. There's just no words."

An American flag was draped over Lemm's casket. Huge multicolored floral arrangements were stacked alongside it.

A large flat-screen TV ran a slide show of pictures of Lemm and his family, including his widow, Christine, his stepdaughter Brooke, 17, and Ryan.

Lemm's funeral is at 10 a.m. Wednesday at St. Patrick's Cathedra.

NJ dune fix just beachy

More than nine miles of southern New Jersey beaches will be getting a touch-up next month, courtesy of the federal government.

The US Army Corps of Engineers says it will conduct supplemental sand pumping in Ocean City, Sea Isle City and the Strathmere section of Upper Township. The work is to repair damage from a storm that occurred just after the beaches had undergone replenishment in the fall. AP