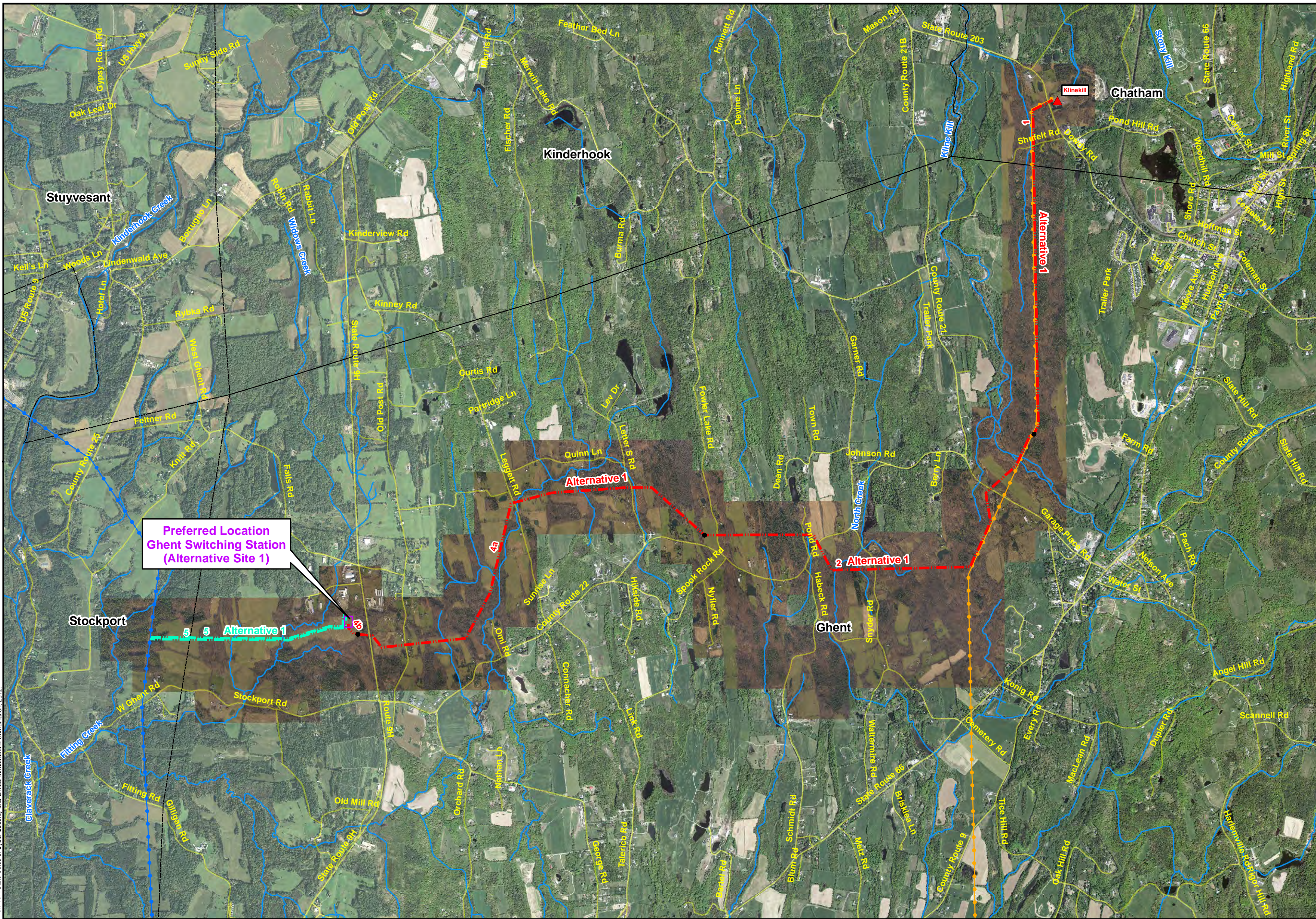


Path: V:\NYSEG\58615_Klinekill_Valkin\GISDataFiles\ArcDoc\Map\Revised\Figure_3-3a_11X22_24K.mxd dwerth 10/22/2012
 Contains information copyrighted by the New York State Office of Cyber Security and Critical Infrastructure Coordination, 2012.



Roads

Town Boundary

Ghent Switching Station

Segment Endpoint

Circuit #726

Extension of National Grid 115-kV Trunk #15

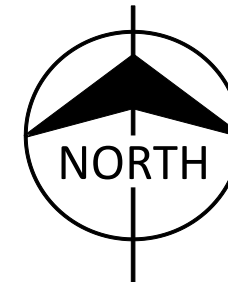
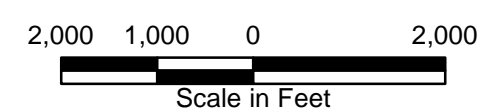
Existing Substation

Rivers

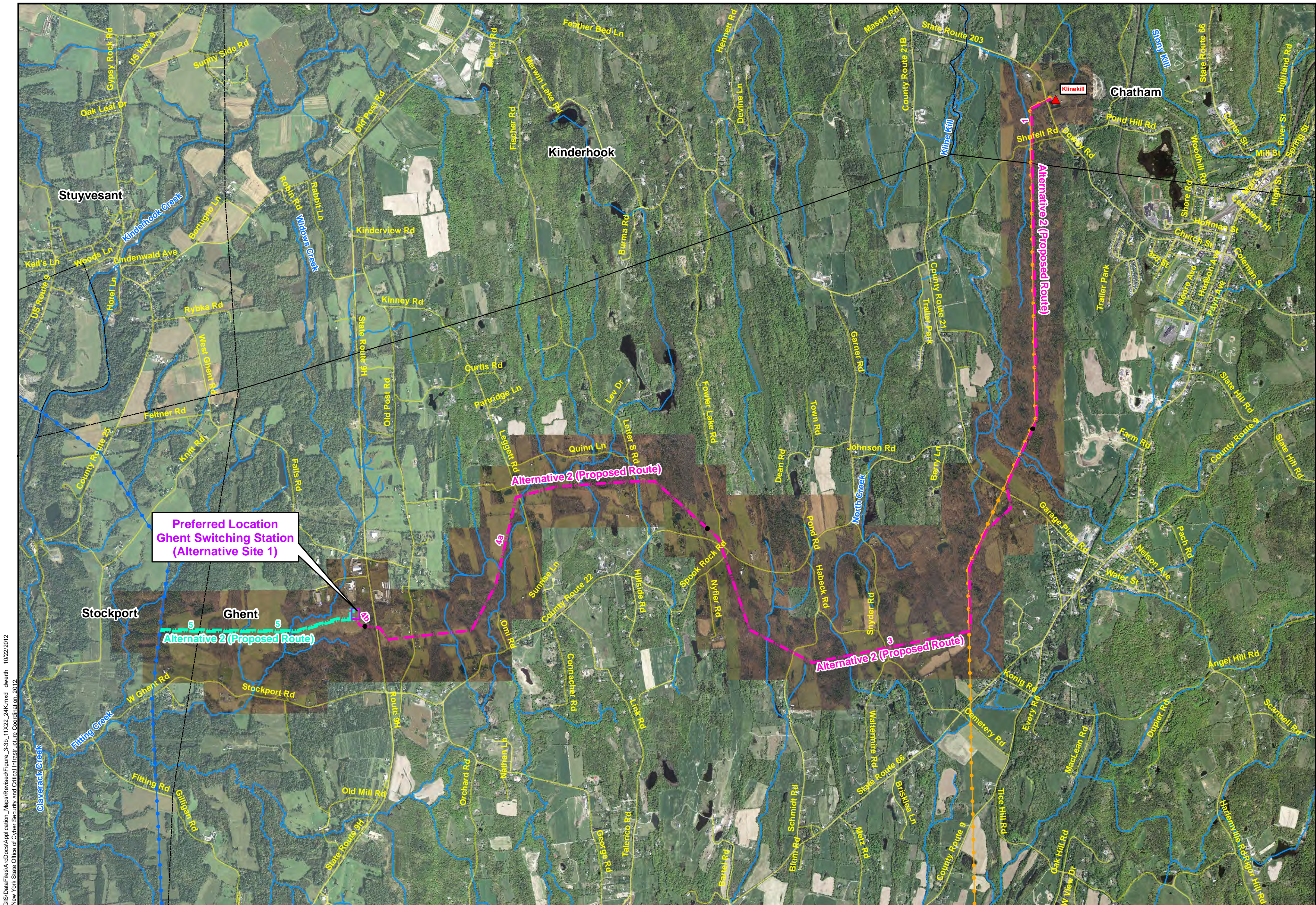
Existing Transmission Lines

Existing NYSEG Transmission Line

Existing National Grid Transmission Line



Columbia County Transmission Project
Figure 3-3a
Alternative 1



Preferred Location
Ghent Switching Station
(Alternative Site 1)

Roads

Town Boundary

Ghent Switching Station

Segment Endpoint

Circuit #726

Extension of National
Grid 115-kV Trunk #15

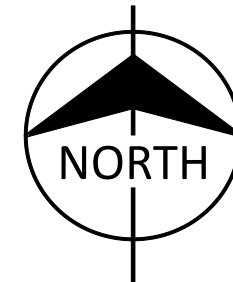
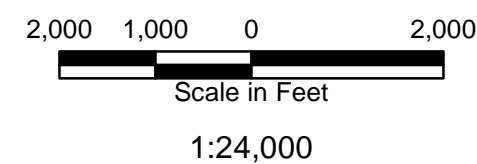
Existing Substation

Rivers

Existing Transmission Lines

Existing NYSEG Transmission Line

Existing National Grid Transmission Line



**Columbia County Transmission
Project
Figure 3-3b
Alternative 2**



Path: V:\NYSEG\58615_Klinekill_Valkin\GISDataFiles\ArcDocs\Application_Maps\Revised\Figure_3-3c_11X22_24K.mxd dwerth 10/22/2012
 Contains information copyrighted by the New York State Office of Cyber Security and Critical Infrastructure Coordination, 2012.

— Roads

▭ Town Boundary

▭ Ghent Switching Station

● Segment Endpoint

— Circuit #726

— Extension of National Grid 115-kV Trunk #15

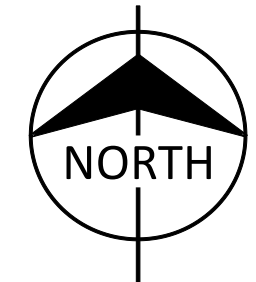
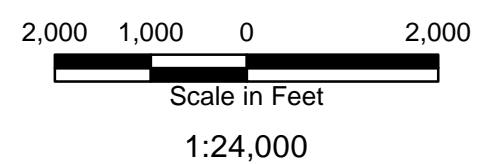
▲ Existing Substation

— Rivers

Existing Transmission Lines

— Existing NYSEG Transmission Line

— Existing National Grid Transmission Line

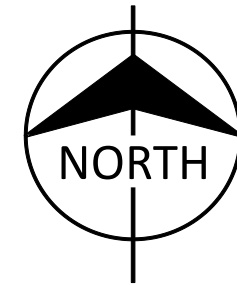
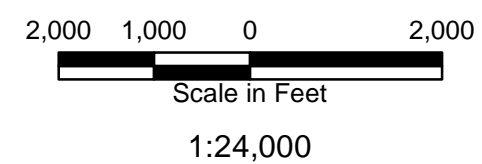


Columbia County Transmission Project
Figure 3-3c
Alternative 3

Path: V:\NYSEG\58615_Klinekill_Valkin\GISDataFiles\ArcDocs\Application_Maps\Revised\Figure_3-3d_11x22_24K.mxd dwerth 10/22/2012
 Contains information copyrighted by the New York State Office of Cyber Security and Critical Infrastructure Coordination, 2012.



- | | | |
|-------------------------|---|--|
| Roads | Circuit #726 | Existing Transmission Lines |
| Town Boundary | Extension of National Grid 115-kV Trunk #15 | Existing NYSEG Transmission Line |
| Ghent Switching Station | Existing Substation | Existing National Grid Transmission Line |
| Segment Endpoint | Rivers | |



Columbia County Transmission Project
Figure 3-3d
Alternative 4