

Drawing Date: 2/12/2015  
 © 2015 ESS Group, Inc.  
 Path: G:\GIS-Projects\P298-000 Poseidon NJ-NY 2013\MXD\Article\_VII\_Figures\Deficiency\_Letter\_Response\P298\_Figure 2-2\_Revised\_Project\_Location\_Landscape.mxd

**Poseidon Transmission 1, LLC**  
 The Poseidon Project  
 Middlesex County, New Jersey to Suffolk County, New York

1 inch = 2,000 feet

Source: 1) USGS, 1:24,000 Topo Map, 2011 2) NYSOCS, Public Land Boundaries, 2005 3) NPS, National Register Historic Places, 2012  
 4) ESS Group, Poseidon Cable Routing, 2013 5) Shipwrecks and Obstructions, NOAA Office of Coast Survey, 2013  
 6) NYS - Office of Parks Recreation and Historic Places, NYS Heritage Data 7) NOAA Chart 12327

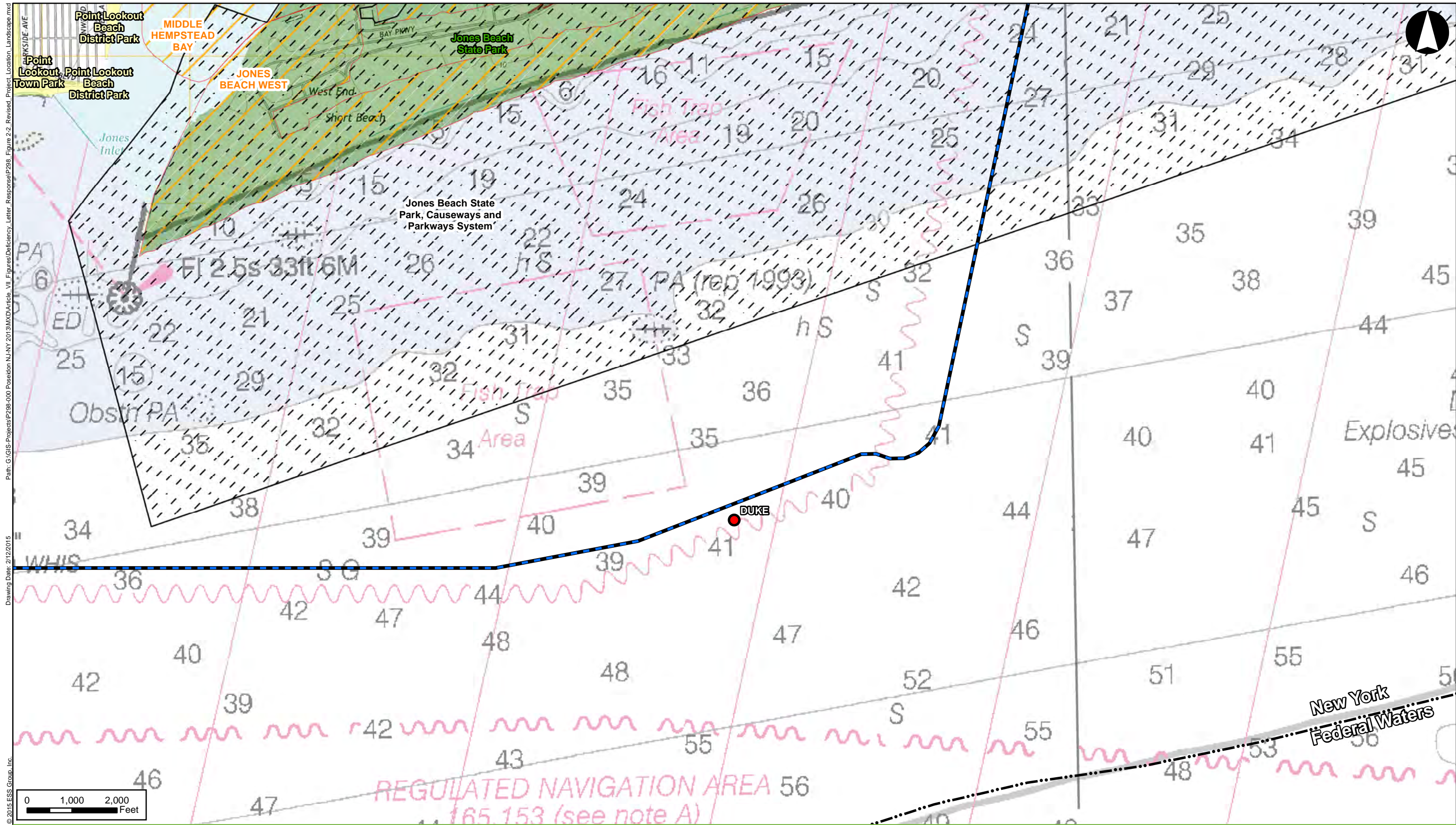
**Legend**

- HVDC Land Cable Route
- Submarine Cable Route
- Submarine Transmission Cable Route (New Jersey)
- Proposed Converter Station
- Existing Substation Area
- State/Federal Boundary
- State Scenic Byway
- NYS Heritage Area
- National Register of Historic Places
- Significant Coastal Fish and Wildlife Habitat
- Areas of Archaeological Significance
- Municipal Recreation Area
- County Recreation Area
- State Recreation Area
- Federal Non-Recreation Area
- Shipwreck

**Location of Facilities in New York**

**Figure 2-2 Revised**





Drawing Date: 2/12/2015  
 Path: G:\GIS-Projects\2198-000 Poseidon NJ-NY 2013\MXD\Article\_VII\_Figures\Deficiency\_Letter\_Response\2198\_Figure 2-2\_Revised\_Project\_Location\_Landscape.mxd  
 © 2015 ESS Group, Inc.



**Poseidon Transmission 1, LLC**  
 The Poseidon Project  
 Middlesex County, New Jersey to Suffolk County, New York

1 inch = 2,000 feet

- Source: 1) USGS, 1:24,000 Topo Map, 2011 2) NYSOCS, Public Land Boundaries, 2005 3) NPS, National Register Historic Places, 2012  
 4) ESS Group, Poseidon Cable Routing, 2013 5) Shipwrecks and Obstructions, NOAA Office of Coast Survey, 2013  
 6) NYS - Office of Parks Recreation and Historic Places, NYS Heritage Data 7) NOAA Chart 12327

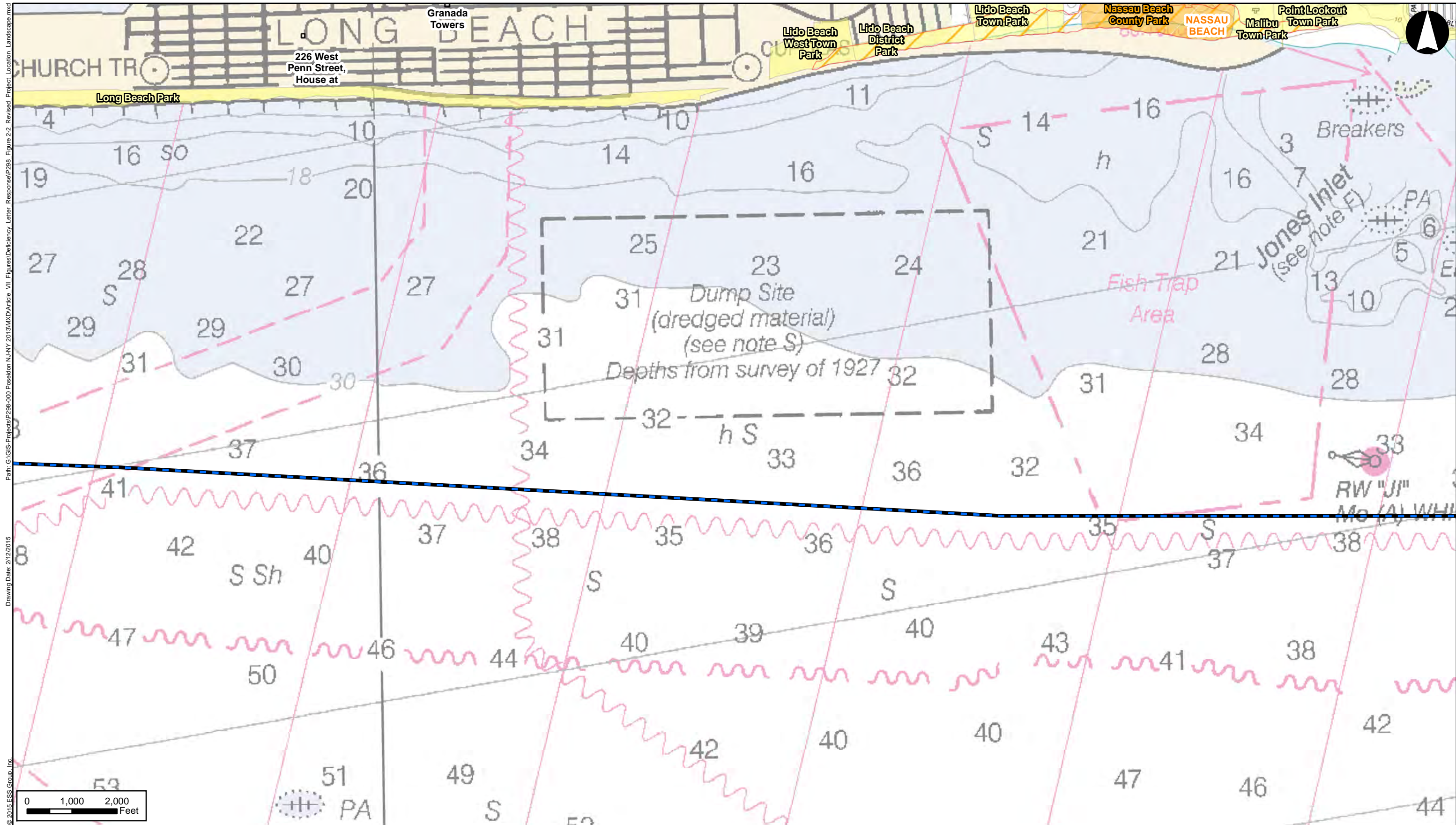
**Legend**

- |   |   |                             |
|---|---|-----------------------------|
| HVDC Land Cable Route                           | State Scenic Byway                            | Municipal Recreation Area   |
| Submarine Cable Route                           | NYS Heritage Area                             | County Recreation Area      |
| Submarine Transmission Cable Route (New Jersey) | National Register of Historic Places          | State Recreation Area       |
| Proposed Converter Station                      | Significant Coastal Fish and Wildlife Habitat | Federal Non-Recreation Area |
| Existing Substation Area                        | Areas of Archaeological Significance          | Shipwreck                   |
| State/Federal Boundary                          |   |                             |

**Location of Facilities in New York**

**Figure 2-2 Revised**  
Sheet 5 of 9





Path: G:\GIS-Projects\298-000 Poseidon NJ-NY 2013\MXD\Article\_VII\_Figures\Deficiency\_Letter\_Response\298-Figure 2-2\_Revise\Project\_Location\_Landscape.mxd  
 Drawing Date: 2/12/2015  
 © 2015 ESS Group, Inc.



**Poseidon Transmission 1, LLC**  
 The Poseidon Project  
 Middlesex County, New Jersey to Suffolk County, New York

1 inch = 2,000 feet

Source: 1) USGS, 1:24,000 Topo Map, 2011 2) NYSOCS, Public Land Boundaries, 2005 3) NPS, National Register Historic Places, 2012  
 4) ESS Group, Poseidon Cable Routing, 2013 5) Shipwrecks and Obstructions, NOAA Office of Coast Survey, 2013  
 6) NYS - Office of Parks Recreation and Historic Places, NYS Heritage Data 7) NOAA Chart 12327

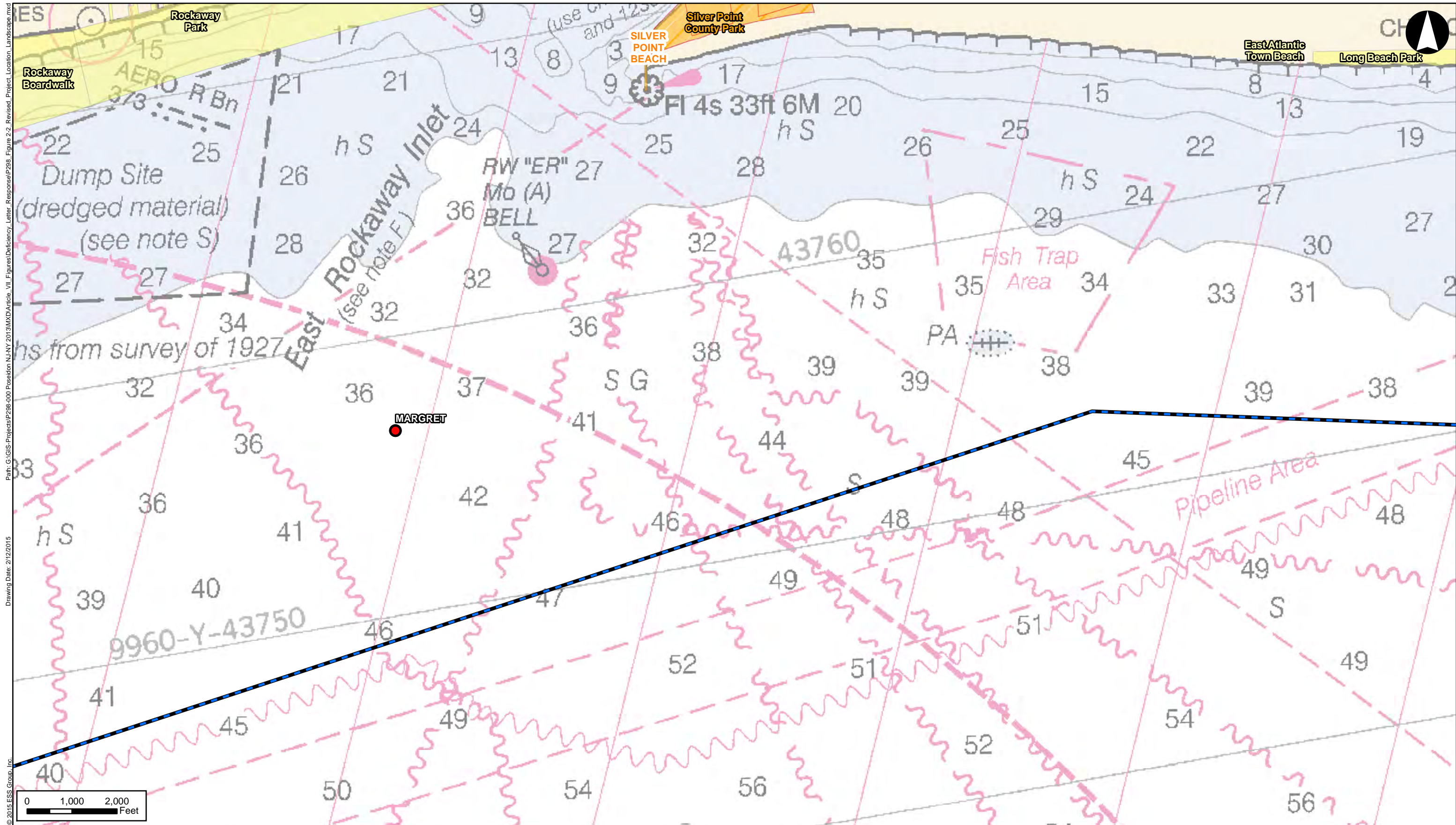
**Legend**

- HVDC Land Cable Route
- Submarine Cable Route
- Submarine Transmission Cable Route (New Jersey)
- Proposed Converter Station
- Existing Substation Area
- State/Federal Boundary
- State Scenic Byway
- NYS Heritage Area
- National Register of Historic Places
- Significant Coastal Fish and Wildlife Habitat
- Areas of Archaeological Significance
- Municipal Recreation Area
- County Recreation Area
- State Recreation Area
- Federal Non-Recreation Area
- Shipwreck

**Location of Facilities in New York**

**Figure 2-2 Revised**  
 Sheet 6 of 9





Path: G:\GIS-Projects\298-000 Poseidon NJ-NY 2013\MXD\Article\_VII\_Figures\Deficiency\_Letter\_Response\298-000 Poseidon NJ-NY 2013\MXD\Article\_VII\_Figures\Deficiency\_Letter\_Response\Figure 2-2\_Rev2.mxd  
 Drawing Date: 2/12/2015  
 © 2015 ESS Group, Inc.



**Poseidon Transmission 1, LLC**  
 The Poseidon Project  
 Middlesex County, New Jersey to Suffolk County, New York

1 inch = 2,000 feet

Source: 1) USGS, 1:24,000 Topo Map, 2011 2) NYSOCS, Public Land Boundaries, 2005 3) NPS, National Register Historic Places, 2012  
 4) ESS Group, Poseidon Cable Routing, 2013 5) Shipwrecks and Obstructions, NOAA Office of Coast Survey, 2013  
 6) NYS - Office of Parks Recreation and Historic Places, NYS Heritage Data 7) NOAA Chart 12327

**Legend**

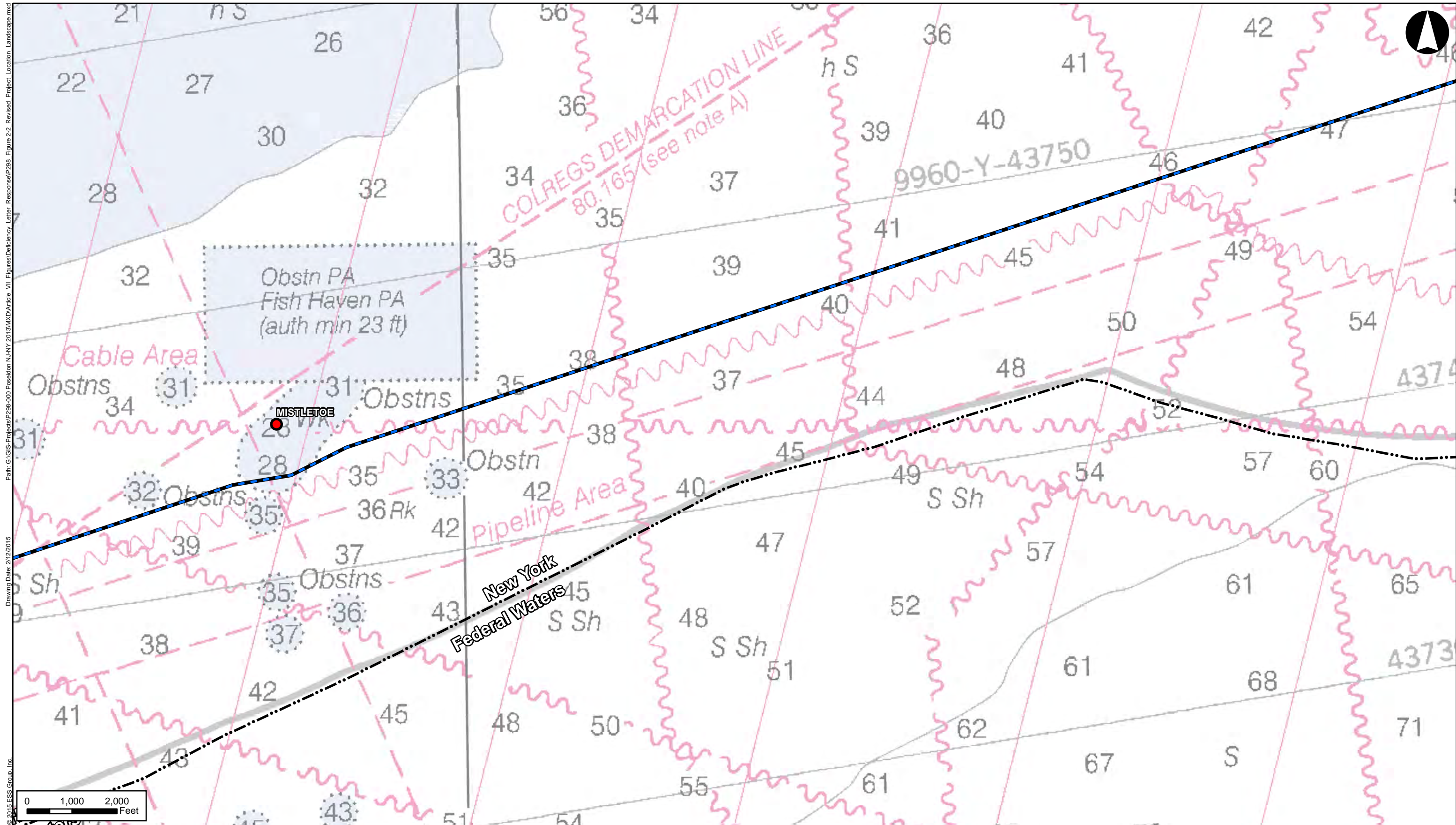
- HVDC Land Cable Route
- Submarine Cable Route
- Submarine Transmission Cable Route (New Jersey)
- Proposed Converter Station
- Existing Substation Area
- State/Federal Boundary
- State Scenic Byway
- NYS Heritage Area
- National Register of Historic Places
- Significant Coastal Fish and Wildlife Habitat
- Areas of Archaeological Significance
- Municipal Recreation Area
- County Recreation Area
- State Recreation Area
- Federal Non-Recreation Area
- Shipwreck

**Location of Facilities in New York**

**Figure 2-2 Revised**



Path: G:\GIS-Projects\P298-000 Poseidon NJ-NY 2013\MXD\Article\_VII\_Figures\Deficiency\_Letter\_Response\P298\_Figure 2-2\_Revised\_Project\_Location\_Landscape.mxd  
 Drawing Date: 2/12/2015  
 © 2015 ESS Group, Inc.



**Poseidon Transmission 1, LLC**  
 The Poseidon Project  
 Middlesex County, New Jersey to Suffolk County, New York

1 inch = 2,000 feet

Source: 1) USGS, 1:24,000 Topo Map, 2011 2) NYSOCS, Public Land Boundaries, 2005 3) NPS, National Register Historic Places, 2012  
 4) ESS Group, Poseidon Cable Routing, 2013 5) Shipwrecks and Obstructions, NOAA Office of Coast Survey, 2013  
 6) NYS - Office of Parks Recreation and Historic Places, NYS Heritage Data 7) NOAA Chart 12327

**Legend**

- HVDC Land Cable Route
- Submarine Cable Route
- Submarine Transmission Cable Route (New Jersey)
- Proposed Converter Station
- Existing Substation Area
- State/Federal Boundary
- State Scenic Byway
- NYS Heritage Area
- National Register of Historic Places
- Significant Coastal Fish and Wildlife Habitat
- Areas of Archaeological Significance
- Municipal Recreation Area
- County Recreation Area
- State Recreation Area
- Federal Non-Recreation Area
- Shipwreck

**Location of Facilities in New York**

**Figure 2-2 Revised**  
 Sheet 8 of 9



