

PUBLIC INVOLVEMENT PROGRAM PLAN

Prattsburgh Wind Farm
Steuben County, New York

Case 19-F-_____

Prepared for:

Terra-Gen, LLC
437 Madison Ave., Suite A
New York, NY 10022
Contact: Mr. Kevin Sheen, VP of Business Development
Phone: (917) 679-6877

Prepared by:



Environmental Design & Research,
Landscape Architecture, Engineering & Environmental Services, D.P.C.
217 Montgomery Street, Suite 1000
Syracuse, New York 13202
Contact: Ben Brazell
Phone: (315) 471-0688

August 2019

TABLE OF CONTENTS

1.0	INTRODUCTION	1
2.0	FACILITY DESCRIPTION	1
2.1	COMPANY PROFILE	1
2.2	FACILITY SUMMARY	2
2.3	STUDY AREA	3
3.0	IDENTIFICATION OF STAKEHOLDERS	3
3.1	AFFECTED STATE AND FEDERAL AGENCIES	4
3.2	LOCAL AGENCIES	5
3.3	MUNICIPALITIES AND SCHOOL DISTRICTS IN THE FACILITY AREA	6
3.4	MUNICIPALITIES AND SCHOOL DISTRICTS IN THE STUDY AREA	6
3.5	ADDITIONAL STAKEHOLDERS	7
3.6	HOST AND ADJACENT LANDOWNERS	8
3.7	PUBLIC INTEREST GROUPS	8
3.8	ENVIRONMENTAL JUSTICE COMMUNITIES THAT WILL BE AFFECTED BY THE PROPOSAL	8
4.0	LANGUAGE ACCESS	9
5.0	PROPOSED PUBLIC INVOLVEMENT PROGRAM	10
5.1	CONSULTATION WITH THE AFFECTED AGENCIES AND STAKEHOLDERS	11
5.2	PRE-APPLICATION ACTIVITIES TO ENCOURAGE STAKEHOLDER PARTICIPATION	13
5.3	ACTIVITIES TO EDUCATE THE PUBLIC ON THE PROPOSAL, PROCESS, AND FUNDING... ..	13
5.3.1	Public Information Sessions	14
5.3.2	Educational Materials	15
5.4	WEBSITE	15
5.5	NOTIFICATIONS	16
5.6	ACTIVITIES TO ENCOURAGE STAKEHOLDER PARTICIPATION IN THE CERTIFICATION PROCESS	16
6.0	REQUIRED AIRPORT/HELIPORT PRE-APPLICATION CONSULTATION	17
7.0	REFERENCES	18

LIST OF TABLES

Table 1. Most Prevalent Non-English Languages Spoken in Study Area Zip Codes	9
Table 2. Schedule of Key Milestones	14

LIST OF FIGURES

Figure 1.	Facility Location Map
Figure 2.	Facility Area
Figure 3.	Study Area

LIST OF EXHIBITS

Exhibit A.	Notification List
Exhibit B.	Goals and Objectives for Stakeholder Involvement
Exhibit C.	Example PIP Tracking Log

Applicant Contact Information and Document Repositories

Facility Representative (for the public and stakeholders to contact with questions, concerns, etc.)

Mr. Kevin Sheen, VP of Business Development, Terra-Gen, LLC.

Address: 437 Madison Avenue, Suite A, New York, New York 10022

Phone: (917) 679-6877

Email: KSheen@terra-gen.com

Availability: 9:00 AM – 5:00 PM

Toll Free Number: (888) 802-8834

Local Number: (607) 622-8311

Local Document Repositories

- Prattsburgh Town Hall, 19 North Main Street, Prattsburgh, NY 14873. Monday, Tuesday, Thursday, and Friday 8 AM-12:30 PM and 1:30 PM – 4 PM; Wednesday 8 AM – 12 PM.
- Prattsburgh Free Library, 26 South Main Street, Prattsburgh, NY 14873. Patron hours are Tuesday and Thursday 12 PM – 8 PM; Wednesday 10 AM – 6 PM; Friday 12 PM – 6 PM; and Saturday 10 AM – 2 PM.
- Wheeler Town Hall, 6429 Gardner Road, Bath, NY, 14810. Monday-Thursday 1-4 PM; some Saturdays 9 AM – 12 PM.

TERM IDENTIFIERS

Adjacent Landowners	Entities owning parcels abutting the Facility Site or within 500 feet of a wind turbine.
Adjacent Municipalities	Municipalities outside the Facility Site but having jurisdiction over lands within the Study Area.
Article 10	The article of the New York State Public Service Law (PSL § 160 <i>et seq.</i>) under which proceedings, where an applicant seeking a Certificate of Environmental Compatibility and Public Need to operate a major electric generating facility, are conducted.
Capacity Factor	The ratio of an energy generating facility's actual output over a period of time, to its potential (i.e., nameplate) output over that same period of time.
Facility Area	The general area of land within which all Facility components will ultimately be located. The Facility Area is defined in the early stages of the project and is used generally for environmental studies and early-stage investigations. The Facility Area is a preliminary characterization of the proposed Facility and is superseded by the "Facility Site" as the project progresses.
Facility Site	Those parcels currently under, or being pursued for, lease (or other real property interests) with the Applicant for the location of all Facility components. The Facility Site is difficult to define in the early stages of a project due to the iterative nature of siting a wind energy generating facility. As the project layout and landowner negotiations solidify, it becomes the primary project boundary used in planning and in the Article 10 Application.
Host Landowners	Entities owning parcels within the Facility Site.
Host Municipalities	All local municipalities having jurisdiction over lands where the Applicant proposes to locate Facility components.
NYSDEC	New York State Department of Environmental Conservation
NYSDPS	New York State Department of Public Service
NYSDAM	New York State Department of Agriculture and Markets
PIP	Public Involvement Program plan – A series of coordinated activities that provides a variety of effective public participation opportunities by which public concerns can be identified as early as possible throughout the various stages of the decision-making process, ensures communication between stakeholders and an applicant, and results in education of the public as to the specific proposal and the Article 10 process. See 16 NYCRR § 1000.2(ah).
Public Interest Groups	Non-governmental organizations with a presence in the area and having core missions related to environmental stewardship, economic sustainability, wind energy development, etc.
Siting Board	New York State Board on Electric Generation Siting and the Environment.

Stakeholders	Those persons who may be affected or concerned by any issues within the Board's jurisdiction relating to the proposed major electric generating facility and any decision being made by it. See 16 NYCRR 1000.2(an).
Study Area	The area within a radius of five miles from all generating facility components, interconnections and related facilities. See 16 NYCRR 1000.2(ar).

1.0 INTRODUCTION

Prattsburgh Wind, LLC (“the Applicant”), a wholly-owned subsidiary of Terra-Gen, LLC, is proposing to submit an Application to construct a major generating facility under Article 10 of the New York Public Service Law. Pursuant to the rule of the New York State Board on Electric Generation Siting and the Environment (“Siting Board”), applicants proposing to submit an Application to construct a major electric generating facility must first submit a Public Involvement Program plan (“PIP”). This document is intended to serve as the PIP for the Prattsburgh Wind Farm (the “Facility”). The Facility is proposed to be an approximately 147-megawatt (“MW”) wind powered electric generating facility in the Towns of Prattsburgh, Avoca, Cohocton, and Wheeler, Steuben County, New York (Figure 1). This PIP describes how the Applicant will seek public involvement throughout the Article 10 process, including planning, pre-application, certification, compliance and implementation of the Facility. It is the Applicant’s intent to facilitate communication with interested or affected stakeholders, solicit public comments, provide timely notice of proposed project milestones and events, and to encourage the public and interested parties to engage in the process and provide input. A robust public involvement program will ensure that the Siting Board is aware of stakeholder support and concerns.

Under 16 NYCRR § 1000.4, the PIP must be submitted to the New York State Department of Public Service (“NYSDPS”) for review at least 150 days prior to filing a Preliminary Scoping Statement (“PSS”). As required under 16 NYCRR § 1000.4, the Applicant’s PIP includes the following components:

- (1) Consultation with affected agencies and other stakeholders;
- (2) Pre-application activities to encourage stakeholders to participate at the earliest opportunity;
- (3) Activities designed to educate the public about the Facility and the Article 10 review process, including the availability of funding for municipal and local parties;
- (4) The establishment of a website to disseminate information and updates to the public regarding the Facility and the Article 10 process;
- (5) Notifications to affected agencies and other stakeholders; and
- (6) Activities designed to encourage participation by stakeholders in the certification and compliance process.

2.0 FACILITY DESCRIPTION

2.1 COMPANY PROFILE

The Applicant is a wholly-owned subsidiary of Terra-Gen, LLC, a company that specializes in the development, construction, and operation of utility-scale energy generation and storage projects, including wind and solar. Headquartered in New York, New York, with an office in San Diego, Terra-Gen was established in August 2007, and is led by an experienced executive management team averaging over 25 years of relevant industry experience. Since

2010 Terra-Gen, LLC has financed and constructed more than 1,800MWs of wind projects in the US and has a development pipeline of over 2,000 MWs of wind and 1,000 MWs of solar in various stages of development in several US states. The management team has contracted or re-contracted over 10,000 MW of power generation facilities and has developed or acquired over \$25 billion in assets over their careers. For more information on Terra-Gen wind projects see <https://www.terra-gen.com/wind>.

2.2 FACILITY SUMMARY

The Prattsburgh Wind Farm is anticipated to have a nameplate capacity of 147 MW¹. The Facility will be located within the Towns of Prattsburgh, Avoca, Cohocton, and Wheeler, Steuben County, New York on leased lands that are rural in nature. Proposed Facility components will be sited to enable landowners to continue existing land uses, such as agriculture and hunting.

The proposed Facility will include the installation and operation of up to 44 wind turbines, together with the associated collection lines (below ground and overhead), access roads, meteorological towers, and operation and maintenance (O&M) building. To deliver electricity to the New York State power grid, the Applicant proposes to construct a collection substation, a 115 kilovolt (kV) electrical transmission line, and a point of interconnect (POI) substation that will interconnect with NYSEG's existing 230 kV Meyer to Avoca transmission line. The POI substation will be located in either the Town of Avoca or the Town of Cohocton.

The proposed Facility will have positive impacts on socioeconomics in the area. In the United States it is estimated that a 50 MW wind project will create 40 full-time equivalent jobs during the construction period² and two long-term full-time jobs for every 10 to 20 turbines during the operation period (NYSERDA, 2017). Most jobs created by the Facility will likely be drawn from Steuben County, the Southern Tier and Western New York labor markets. In addition, the Facility will positively impact socioeconomics through payment in lieu of taxes (PILOT) to municipalities, landowner lease agreement revenues, and the purchase of local services and goods³. The Applicant's Article 10 Application will include a full discussion of the socioeconomic impacts and local benefits anticipated to result from construction and operation of the Facility.

¹ Providing enough electricity for 45,000 to 70,000 households, based on average annual electric consumption rates of 10.4 MWh and 6.8 MWh per household for the United States and New York State, respectively, and an annual average wind energy capacity factor of 37.4% (EIA, 2018; EIA, 2019).

² Construction jobs may be less than full-time; these estimates under-represent the total number of people hired.

³ Note, PILOT discussions with host municipalities have not yet begun and landowner negotiations are confidential. The Applicant will provide this information in accordance with the Article 10 regulations as it becomes available.

2.3 STUDY AREA

Per 16 NYCRR § 1000.2(ar), the Study Area to be used for analysis of major electric generating facilities is defined as “an area generally related to the nature of the technology and the setting of the proposed site. For large facilities or wind power facilities with components spread across a rural landscape, the study area shall generally include the area within a radius of at least five miles from all generating facility components, interconnections and related facilities and alternative location sites.” The Study Area for the Facility includes the Town of Springwater, Livingston County; Town of Naples and Village of Naples, Ontario County; Towns of Italy and Jerusalem, Yates County; Towns of Cohocton, Dansville, Fremont, Howard, Bath, Prattsburgh, Pulteney, Urbana, Wheeler, Wayland, and Avoca, and the Villages of Cohocton and Avoca, Steuben County.

With respect to the Facility Area and Study Area presented in this PIP (see Figure 2 and 3), it should be noted that the selection of appropriate sites for a wind-powered electric generation facility is constrained by numerous factors that must be simultaneously balanced for a given project to operate in a technically and economically viable manner. Availability and quality of the wind resource and proximity to bulk power transmission systems are the initial screening criteria evaluated in the site selection process for any wind power project. The Applicant’s initial evaluation was based on publicly available data (e.g., the *Wind Resource of New York, Mean Annual Wind Speed at 100 Meters* map prepared by AWS Truewind), site visits, and a capacity analysis of nearby transmission lines. This initial evaluation indicated the wind resource in Steuben County is suitable and access to bulk power transmission systems is adequate. Other factors that increase the suitability of the proposed Facility Area include willing host landowners and municipalities and preliminary environmental reviews that indicate no significant wildlife or unique natural habitat concerns.

3.0 IDENTIFICATION OF STAKEHOLDERS

The first step in designing a PIP is determining who may be affected by the proposed Facility. The Applicant identified affected agencies and municipalities, utilities, host landowners, and other stakeholders based on: a review of the Article 10 regulations; New York State Department of Environmental Conservation (“NYSDEC”) guidance; prior Article 10 PIP submissions; reviews of County GIS data, tax records, and personal visits; consultation with local municipal representatives; and other research efforts. The Applicant considered the following in identifying affected agencies and other stakeholders:

- The potential location of all Facility components within the Facility Area, including the POI;
- The definition of “Local Party” in 16 NYCRR §1000.2(s);
- The definition of “Affected Agencies” in 16 NYCRR § 1000 et seq;
- Host landowners and municipalities;

- Adjacent landowners and municipalities;
- State and federal elected officials representing the host and adjacent municipalities; and
- Public interest groups.

A list of known stakeholders is included as part of the Notification List⁴ (see Exhibit A). This list of stakeholders was developed based on the efforts described above. Sections 3.1 through 3.9, below, identify stakeholders by category. Updates will be provided in pending Article 10 submissions (e.g., the Preliminary Scoping Statement and the Article 10 Application).

No state forest lands are located within the Facility Area; however, state forest lands within the Study Area are listed below:

- Italy Hill State Forest
- Urbana State Forest
- Pigtail Hollow State Forest

These lands are managed by NYSDEC under the Keuka Highlands and Canandaigua Highlands Unit Management Plans (“UMPs”). As initial project consultations proceed, the Applicant will review the UMPs and consult with NYSDEC to identify other potential stakeholders.

3.1 AFFECTED STATE AND FEDERAL AGENCIES

Empire State Development Corporation

National Park Service

National Telecommunications and Information Administration

New York Farm Bureau

New York Independent System Operator

New York State Energy Research and Development Authority

NYS Attorney General

NYS Department of Agriculture and Markets

NYS Department of Environmental Conservation

NYS Department of Health

⁴ This list includes stakeholders and known, potentially interested parties and their contact information. The Notification List is a living document that will be updated as necessary, based on information received during PIP activities (e.g., public meetings and from the Facility website). No limits will be placed on the parties that can be added to the Notification List. Updates to this list will be provided in pending Article 10 submissions (e.g., the Preliminary Scoping Statement and the Article 10 Application).

NYS Department of Public Service
NYS Department of State
NYS Department of Transportation
NYS Division of Homeland Security and Emergency Services
NYS Governor's Office
NYS Office of Parks, Recreation and Historic Preservation
State Assemblyman Marjorie L. Byrnes, Assembly District 133
State Senator Thomas F. O'Mara, District 58
United States Department of Defense
United States Federal Aviation Administration
US Army Corps of Engineers
US Congressman Tom Reed, District 23
US Department of Defense
US Federal Aviation Administration
US Fish and Wildlife Service
US Senator Charles E. Schumer
US Senator Kirsten E. Gillibrand

3.2 LOCAL AGENCIES

Cornell Cooperative Extension, Steuben County
Southern Tier Central Regional Planning & Development Board
Steuben County Soil and Water Conservation District
Steuben County Department of Emergency Services
Steuben County Department of Planning
Steuben County Department of Public Health
Steuben County Department of Public Works
Steuben County Farm Bureau
Steuben County Industrial Development Agency
Town of Prattsburgh Highway Department
Town of Prattsburgh Town Board
Town of Cohocton Town Board
Town of Cohocton Highway Department
Town of Avoca Highway Department
Town of Wheeler Highway Department

3.3 MUNICIPALITIES AND SCHOOL DISTRICTS IN THE FACILITY AREA

Avoca Central School District
Bath Central School District
Naples Central School District
Prattsburgh Central School District
Wayland-Cohocton Central School District
Steuben County
Town of Avoca
Town of Cohocton
Town of Prattsburgh
Town of Wheeler

3.4 MUNICIPALITIES AND SCHOOL DISTRICTS IN THE STUDY AREA

Arkport Central School District
Gorham-Middlesex Central School District (Marcus Whittman)
Hammondsport Central School District
Hornell City School District
Livingston County
Ontario County
Penn Yan Central School District
Town of Bath
Town of Dansville, Steuben County
Town of Fremont, Steuben
Town of Howard, Steuben County
Town of Jerusalem, Yates County
Town of Italy, Yates County
Town of Naples, Ontario County
Town of Pulteney, Steuben County
Town of Springwater, Livingston County
Town of Urbana, Steuben County
Town of Wayland, Steuben County

Village of Cohocton, Steuben County

Village of Naples, Ontario County

Village of Avoca, Steuben County

Yates County

3.5 ADDITIONAL STAKEHOLDERS

New York State Electric and Gas ("NYSEG")

Steuben Rural Electric Cooperative

National Fuel Gas

Verizon

Frontier

Bath Sno-flakes Snowmobile Club

Quad County Snowmobile Club, Inc.

Hill and Valley Riders

Ten Towns Snowmobile Club

Loon Lake Raiders 4-H Club (Equestrian)

Wayland Area Revitalization

Cohocton Development Corp.

Spectrum

Finger Lakes Trail Conference

North Country Trail Association

Cohocton Wind Farm

Baron Wind Farm

Canisteo Wind Farm

D.C. Helicopters

Sunoco Product Pipeline

Seneca Nation of Indians

Tuscarora Nation of Indians

The Nature Conservancy

3.6 HOST AND ADJACENT LANDOWNERS

Host landowners are landowners owning parcels within the Facility Site⁵. Adjacent landowners are landowners owning parcels abutting the Facility Site or within 500 feet of a wind turbine. The identities of potential host and adjacent landowners were gathered from County GIS records, tax records, and personal visits by representatives of the Applicant. This list of host and adjacent landowners will be refined as the Facility layout evolves in response to input from stakeholders and field data (e.g., wetland delineations). Therefore, while specific host and adjacent landowner information is not included in this PIP, host and adjacent landowners identified by the Applicant at the time mailings, outreach, or other notification activities will be included on the Notification List and noticed accordingly. Additional information will be submitted with the PSS, as required by 16 NYCRR § 1000.5. To preserve confidentiality, this information may be anonymized by address or tax parcel identification number and may not include names.

3.7 PUBLIC INTEREST GROUPS

Hornell Area Chamber of Commerce
Steuben County Environmental Management Council
Steuben County Conference & Visitors Bureau
Steuben County Farm Bureau
Steuben County Agricultural Society
Steuben County American Legion
Cohocton Wind Watch
Cohocton Free

3.8 ENVIRONMENTAL JUSTICE COMMUNITIES THAT WILL BE AFFECTED BY THE PROPOSAL

The Facility will be subject to the rules contained in 6 NYCRR Part 487. This law was promulgated by the NYSDEC for the analysis of environmental justice issues associated with Article 10 projects.

Per NYSDEC Environmental Justice Policy CP-29, Potential Environmental Justice Areas include census block groups featuring populations that meet or exceed at least one of the following statistical thresholds:

1. At least 51.1% of the population in an urban area reported themselves to be members of minority groups; or
2. At least 33.8% of the population in a rural area reported themselves to be members of minority groups; or
3. At least 23.59% of the population in an urban or rural area had household incomes below the federal poverty level.

⁵ Note: The Facility Site includes those parcels currently under, or being pursued for, lease (or other real property interests) with the Applicant for the location of all Facility components.

Based on data obtained from the NYSDEC's *Geospatial Information System ("GIS") Tools for Environmental Justice* website (www.dec.ny.gov/public/911.html), there are no identified Environmental Justice Areas within 5 miles of the Study Area. The closest Environmental Justice Area is located approximately 17 miles northeast of the Facility, in the Town of Groveland, Livingston County, New York. Further discussion of Environmental Justice will be provided in the PSS and the Application (Exhibit 28) pursuant to the Article 10 requirements set forth at 1000.5(l)(2)(xi).

4.0 LANGUAGE ACCESS

Per 16 NYCRR § 1000.4(d), Article 10 requires the PIP to identify (1) any language other than English spoken by 5,000 or more persons residing in any 5-digit zip code that intersects the Study Area and (2) any language other than English spoken by a significant population of persons residing near the proposed Facility Area.

Eleven 5-digit zip codes intersect the Study Area. No non-English language is spoken by more than 5,000 people residing in any 5-digit zip code within the Study Area⁶ (see Table 1).

Table 1. Most Prevalent Non-English Languages Spoken in Study Area Zip Codes

Zip Code	Language	Number of Speakers
14418	Other Indo-European Languages	32
14437	Spanish	393
14507	Other Indo-European Languages	22
14512	Other Indo-European Languages	77
14527	Other Indo-European Languages	1,926
14572	Other Indo-European Languages	38
14807	Other Indo-European Languages	35
14808	Spanish	8
14809	Other Indo-European Languages	35
14810	Other Indo-European Languages	217
14823	Spanish	17
14826	Other Indo-European Languages	10
14840	Other Indo-European Languages	59
14843	Spanish	208
14856	None	NA
14873	Other Indo-European Languages	106
14874	None	NA

Source: 2013-2017 American Community Survey 5 Year Estimates (website: <https://factfinder.census.gov/faces/nav/jsf/pages/index.xhtml>)

⁶ As per 2010 U.S Census Bureau data.

The Study Area contains portions of Steuben, Ontario, Yates, and Livingston Counties. Steuben County is a host municipality, Ontario, Yates, and Livingston Counties are adjacent municipalities. Steuben County has 92,001 residents over the age of 5, of which 4,694 (5.1%) speak a language other than English at home. Ontario, Yates, and Livingston Counties have, respectively, 103,959, 23,566, and 61,485 residents over the age of 5, of which 7,380 (7.1%), 3,346 (14.2%), and 3,972 (6.5%) speak a language other than English at home.

5.0 PROPOSED PUBLIC INVOLVEMENT PROGRAM

According to 16 NYCRR § 1000.4(c), a Public Involvement Program must include: (1) consultation with the affected agencies and other stakeholders; (2) pre-application activities to encourage stakeholders to participate at the earliest opportunity; (3) activities designed to educate the public as to the specific proposal and the Article 10 review process, including the availability of funding for municipal and local parties; (4) the establishment of a website to disseminate information to the public; (5) notifications; and (6) activities designed to encourage participation by stakeholders in the certification and compliance process. It is anticipated that this will be an ongoing, evolving process throughout all phases of the Article 10 review process (pre-application phase, application phase, hearing and decision phase, and post-certification phase). The intent of the PIP is to disseminate Facility information to stakeholders, ascertain stakeholder interests, identify any additional stakeholders with interests potentially impacted by the project, solicit information from stakeholders through public outreach, and foster participation in the Article 10 review process. The Applicant has recently established a user-friendly website in plain English that describes the Facility and provides updates (www.prattsburghwindfarm.com) (see Section 5.4 below for additional detail).

Please note the following Applicant contact information and document repositories:

- Facility Representative (for the public and stakeholders to contact with questions, concerns, etc.):
Mr. Kevin Sheen, VP of Business Development, Terra-Gen, LLC.
Address: 437 Madison Avenue, Suite A, New York, New York 10022
Phone: (917) 679-6877
Email: KSheen@terra-gen.com
Availability: 9:00 AM – 5:00 PM
- Toll Free Number: (888) 802-8834-
Local Number: (607) 622-8311
- Project Email: contact@terra-gen.com
- Local Document Repositories:
 - Prattsburgh Town Hall, 19 North Main Street, Prattsburgh, NY 14873. Monday, Tuesday, Thursday, and Friday 8 AM-12:30 PM and 1:30 PM – 4 PM; Wednesday 8 AM – 12 PM.

- Prattsburgh Free Library, 26 South Main Street, Prattsburgh, NY 14873. Patron hours are Tuesday and Thursday 12 PM – 8 PM; Wednesday 10 AM – 6 PM; Friday 12 PM – 6 PM; and Saturday 10 AM – 2 PM.
- Wheeler Town Hall, 6429 Gardner Road, Bath, NY, 14810. Monday-Thursday 1-4 PM; some Saturdays 9 AM – 12 PM.

The Applicant does not propose a local project office at this time. Should one be established, its location and office hours would be posted to the website and provided to the public as appropriate.

Comments or questions received as voicemail to the project team during non-business hours will be checked the following business day. All inquiries received by telephone or email will be returned as soon as reasonably practicable, generally within 3-5 business days. If additional time is required to respond to an inquiry, an acknowledgement will be provided which indicates a response is forthcoming. Where the information sought is not available, such as the results of studies not yet completed, the Applicant will provide a response estimating when the requested information should become available in the future.

The Applicant will discuss its plans for outreach and resolution of potential complaints during construction and operation of the Facility in its Article 10 Application, which will include a Complaint Resolution Plan or similar document. Additional outreach to host landowners and host municipalities will take place during decommissioning and restoration activities, this outreach will be discussed further in the Application.

5.1 CONSULTATION WITH THE AFFECTED AGENCIES AND STAKEHOLDERS

The Applicant's consultation with affected agencies and municipalities will include:

1. An initial consultation with each agency or municipality to improve awareness of the Facility, explain the Article 10 process, request and disseminate information, and provide contact information for any follow-up;
2. Follow-up, as needed, to provide project updates, answer specific questions or concerns about the Facility, and identify the applicable studies and impact analyses to be performed and how they pertain to the Facility; and
3. Other actions required by the Article 10 regulations or needed to inform the process.

Specific information provided in the initial consultation to the affected agencies and municipalities will include a description of the Facility and its location; an explanation of the phases of the Article 10 process and how the agency or municipality can participate in each step; a description of the availability and process for obtaining Intervenor

Funding; a description of the ad hoc committee process and local municipal responsibility; information about other planned consultations; and sources of additional information about the Facility and Article 10 (e.g., the Facility and Siting Board websites). Information requested from affected municipalities and agencies will vary based on involvement (e.g., host versus adjacent municipality), but may include: details specific to potential agreements (e.g., payment in lieu of taxes and highway work), local laws, emergency response organizations, environmental impact reviews, contact information for public interest groups, and identification of public interest or community groups that should be added as stakeholders.

As indicated in Section 1.0, the PIP must be submitted at least 150 days prior to the PSS. It should be noted that, in accordance with 16 NYCRR 1000.5(g), comments on the PSS are due within 21 days of its filing with the NYSDPS Secretary to the Commission ("Secretary"). The Applicant intends to engage municipalities, agencies, and stakeholders throughout the PIP implementation process to identify their respective interests and obtain information regarding resources, locations, concerns, and recommendations. Prior to filing the PSS, this will be accomplished through a variety of means, including public information sessions, direct correspondence, reviews of comments submitted on the website, and targeted meetings with some of the stakeholders identified in the PIP. Throughout these activities, the Applicant will provide stakeholders with the approximate schedule for PSS submission and highlight the 21-day public comment period.

Exhibit B lists the affected agencies, municipalities, and interested parties identified to date, the goals and objectives of consulting with these entities, and the plan for achieving these goals (e.g., who will receive the direct correspondence, when and for what purpose). Note, consultation with many of these agencies and municipalities has begun, including consultation with the Prattsburgh Town Board, the USFWS via the Information for Planning and Consultation (IPaC) system in April 2019, and the NYSDEC via the New York Natural Heritage Program (NYNHP) in April 2019. Additional consultation with the NYSDEC includes a submitted Project layout and pre-construction wildlife survey locations in May of 2019, as well as a kick off meeting on May 22, 2019 with the DPS and USFWS. Meetings with local landowners to discuss the leasing process have been ongoing.

Consultation will be deemed successful if (1) the appropriate information about the Facility and the Article 10 process is provided to agency and municipality representatives, (2) the relevant information requested by the Applicant is received, (3) the Applicant is able to determine the interests and address concerns of stakeholders throughout the permitting and development process, and (4) follow up meetings or consultations are scheduled, as needed.

The Applicant will track implementation of this Public Involvement Program Plan and provide regular updates to NYSDEC Staff. Specifically, the Applicant will maintain a Tracking Log that will provide information regarding

stakeholder consultation meetings, including dates, locations, attendees, purpose, and meeting summaries. An example Tracking Log is included as Exhibit C of this document.

5.2 PRE-APPLICATION ACTIVITIES TO ENCOURAGE STAKEHOLDER PARTICIPATION

The Applicant has engaged in pre-application activities to encourage stakeholder participation since 2019. These activities are summarized in the Tracking Log (Exhibit C) and include:

- 8 meetings with the Prattsburgh Town Board
- Consultation with the Prattsburgh Town Supervisor
- Kick off meeting with NYSDEC, DPS, and FWS
- Transmittal of pre-construction survey locations to NYSDEC

The Applicant will continue pre-application activities to encourage stakeholder participation, as set forth in the Agency/Municipality Consultations table included in Exhibit B. This table will be updated as consultations and stakeholder participation activities take place and additional means of engagement are identified (as necessary). Generally, activities to encourage stakeholder participation during the pre-application phase will include public meetings, attendance at municipal meetings and local events as appropriate, maintenance of an updated website, publication of notices and dissemination of information about the project, as described more fully in the relevant sections of this PIP.

5.3 ACTIVITIES TO EDUCATE THE PUBLIC ON THE PROPOSAL, PROCESS, AND FUNDING

The Applicant has attended and plans to continue to attend Town meetings, is planning Applicant-sponsored public information sessions, will be distributing educational materials, and has established and will continue to update the Facility website. The Facility website will offer information on the proposed Facility, as well as links to and information regarding the Article 10 process, Intervenor Funding, and other important stakeholder issues. Outreach materials – including educational materials – will contain contact, case number, and document repository information, will detail where additional Facility information can be obtained, and will outline the process for becoming a party to these proceedings or for joining the Notification List. These efforts will allow the Applicant to engage with applicable stakeholders and will offer multiple avenues of information, so stakeholders and the public have the best chance to obtain the right information and participate. These efforts are discussed in further detail below.

Table 2. Schedule of Key Milestones

Key Milestone	Date/Time	Milestone Details, Including Notification Summary
Public Information Sessions	Fall/Winter 2019 (prior to PSS Filing)	<ul style="list-style-type: none"> - To be held in the local municipalities. - Two sessions will be held at different times of the day to provide more opportunities for public participation. - Notice of the sessions will be published in the Leader and the Southern Tier Shopper, posted to the Facility website, and sent via mail to stakeholders on the Notification List.
Filing of PSS	Three days before filing	<ul style="list-style-type: none"> - Notice of the Applicant's PSS filing, a summary of the PSS, and other information required in the Article 10 regulations will be published in the Leader and the Southern Tier Shopper, posted on the Facility website, and served as per 16 NYCRR § 1000.5(e) on all parties identified in said regulations.
	No sooner than January 6, 2020, 150 days from PIP Plan filing	<ul style="list-style-type: none"> - Printed hardcopies of the PSS will be served on all parties identified in 16 NYCRR § 1000.5(c). - Printed hardcopies will be provided to the local repositories identified in this section.
Public comment on PSS	Within 21 days of PSS filing	<ul style="list-style-type: none"> - Public comments on the PSS will be served to the Applicant within 21 days of PSS filing.
Applicant's Response to PSS Comments	Within 21 days of comment period ending	<ul style="list-style-type: none"> - The Applicant's responses to public comments on the PSS will be served on those identified in 16 NYCRR § 1000.5(c) within 21 days of the comment period ending.
Additional Public Information Session	Prior to Application Filing	<ul style="list-style-type: none"> - To be held in local municipalities. - Notice of the session will be published in the Leader and Southern Tier Shopper, posted to the Facility website, and sent via mail to stakeholders on the Notification List.

5.3.1 Public Information Sessions

The Applicant intends to hold at least two public information sessions in local municipalities prior to submittal of the PSS. These sessions will be held at different times of the day to provide more opportunities for public participation. Public information sessions will be scheduled for the fall or winter of 2019. Applicant representatives will be present to answer questions and provide preliminary information regarding the Facility.

The Applicant will mail a notice of the pre-PSS public information sessions to residences and businesses within the Facility Area and parties on the Notification List, notifying them of the date and time of the sessions. This mailing will also contain contact and document repository information, details where additional Facility information can be obtained, the case number and project website, and an outline of the process for becoming a party to these proceedings or for joining the Notification List. After the filing of the PSS, the Applicant will notify all parties on the Notification List via mail or email of all other public information sessions held by the Applicant.

All public information sessions will be properly noticed in the Leader and Southern Tier Shopper (a minimum of 14 days in advance) and the Facility website (www.prattsburghwindfarm.com). In addition, information regarding pending public information sessions will be posted in the town halls of respective municipalities, including the Prattsburgh Town Hall. The Applicant will provide verification of public information session notices sent to the Notification List prior to and following PSS filing, including copies of those notices and the Notification List at the time of those mailings.

5.3.2 Educational Materials

The Applicant will develop educational materials to inform the public about wind-generated energy, the proposed Facility, the Article 10 process, and Intervenor Funding. These materials will include poster-sized maps and graphics that will be displayed at public information sessions and factsheets or brochures that will be distributed through public information sessions, document repositories, and the Facility website. These materials will include links to Siting Board and Facility websites and the project case number. Representative examples of educational materials will be posted to the project website and submitted to the record in this proceeding.

5.4 WEBSITE

The Applicant has recently established a user-friendly website in plain English that describes the Facility (www.prattsburghwindfarm.com). While still under development, this website ultimately will contain the following information:

- Facility description;
- Facility benefits and need;
- Summary of permitting requirements;
- Links to the Siting Board Article 10 Public Information Coordinator, the Siting Board home page, and case-specific documents;
- Information on the Article 10 process and public participation options;
- Instructions on how to become a party to these proceedings or join the Notification List, with a link to appropriate webpage;
- Summary of the Intervenor Funding process and how to apply;
- Facility contact information, including email address and toll-free telephone number;
- Copies of Article 10 law, regulations, and related licensing documents;
- A schedule that lists dates/times/locations for outreach events and key milestone dates, such as when the application will be filed; and
- Addresses of local document repositories.

This information will be updated, as necessary (e.g., Facility layout figures will be updated as the Facility layout develops and is finalized). As indicated above, the website includes Facility contact information. To the extent practicable, the Applicant will respond to all substantive comments within five business days; correspondence will be documented.

5.5 NOTIFICATIONS

The Article 10 regulations establish the notification requirements for serving documents. Pursuant to 16 NYCRR § 1000.7, the Applicant will publish all required notices and public information session notifications in the Leader and the Southern Tier Shopper.

No less than three days before filing of the PSS and Application, the Applicant will publish a summary of the respective documents in the Leader and the Southern Tier Shopper. Written notice shall be provided to members of the State Legislature in whose district the Facility is proposed to be located, members of the Notification List, and entities who have filed a statement with the Secretary stating they wish to receive such notices. Copies of the PSS will be served to all parties identified in 16 NYCRR § 1000.5(c). Where a specific legal notice is required by the regulations or the Hearing Examiners, the Applicant will provide proof of service to the Notification List, with a current copy of the Notification List at the time of the mailing. The Notification List may be anonymized for host and adjacent landowners, to preserve privacy.

5.6 ACTIVITIES TO ENCOURAGE STAKEHOLDER PARTICIPATION IN THE CERTIFICATION PROCESS

Beyond the activities described above in Sections 5.1 through 5.5, the Applicant will identify additional, practical measures to encourage stakeholder participation during the certification and compliance process. It is anticipated that this will be an ongoing, evolving process throughout all phases of the Article 10 review process (pre-application phase, application phase, hearing and decision phase, and post-certification phase).

The Applicant will hold an additional public information session(s) and/or will conduct other appropriate outreach prior to filing the Article 10 Application. In addition, the Facility website will be updated regularly with Facility developments, information sessions, and announcements to keep stakeholders and the public informed. The Article 10 Application will include information on the proposed method for addressing inquiries and concerns raised by members of the public during construction, operation, and decommissioning of the Facility, such as through a Compliant Resolution Plan or other document.

6.0 REQUIRED AIRPORT/HELIPORT PRE-APPLICATION CONSULTATION

Pursuant to 16 NYCRR § 1001.25(e) and (f), the Applicant shall coordinate with the Federal Aviation Administration, the Department of Defense, and the National Telecommunications and Information Administration to confirm possible affected airports or heliports near the Facility, or potential impacts to communications infrastructure, radar, or air traffic control. Each federal entity will be contacted via phone call and/or letter to identify the operators and/or appropriate contact person.

Once the proper operator/representative is determined, the outreach to the operator of the public and private airport or public heliport will include another phone call, a follow-up letter, and, if necessary, a meeting to provide Facility-specific information. The Facility-specific information to be provided will include: a detailed map showing the Study Area, Facility Area, and location of Facility components; coordinates and dimensions of each proposed turbine; a description of the Facility construction and operation phases; and a request for review of and comment. Outreach to the Department of Defense will include an initial screening with a follow-up review of the proposed Facility, if required.

7.0 REFERENCES

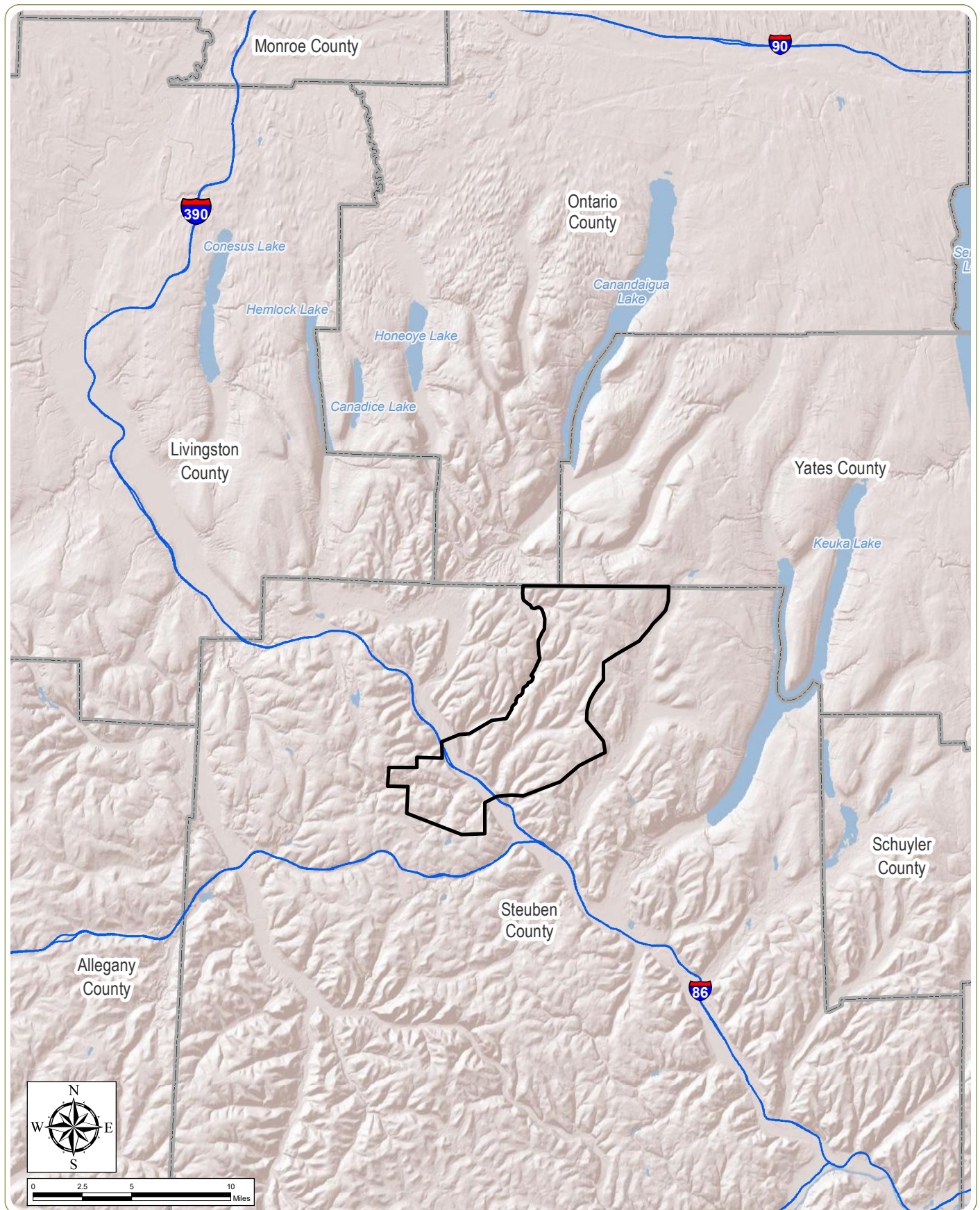
EIA (Energy Information Administration). 2018. *Frequently Asked Questions: How Much Electricity Does an American Home Use?* Available at: <http://www.eia.gov/tools/faqs/#electricity> (Last updated October 26, 2018; Accessed July 8, 2019).

EIA (Energy Information Administration). 2019. *Capacity Factors for Utility Scale Generators Not Primarily Using Fossil Fuels, January 2013-April 2019*. Available at: <https://bit.ly/2GSslqE> (Last updated June 25, 2019, 2018; Accessed July 8, 2019).

NYSERDA (New York State Energy Research and Development Authority). 2017. *New York Wind Energy Guide for Local Decision Makers*. Available at: <http://on.ny.gov/2vQZ45I> (July 8, 2019).

U.S. Census Bureau. 2017. *2013-2017 American Community Survey 5-Year Estimates*. Available at: <https://factfinder.census.gov/faces/nav/jsf/pages/index.xhtml>. (Accessed June 20, 2019).

FIGURES


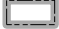


Prattsburgh Wind Farm

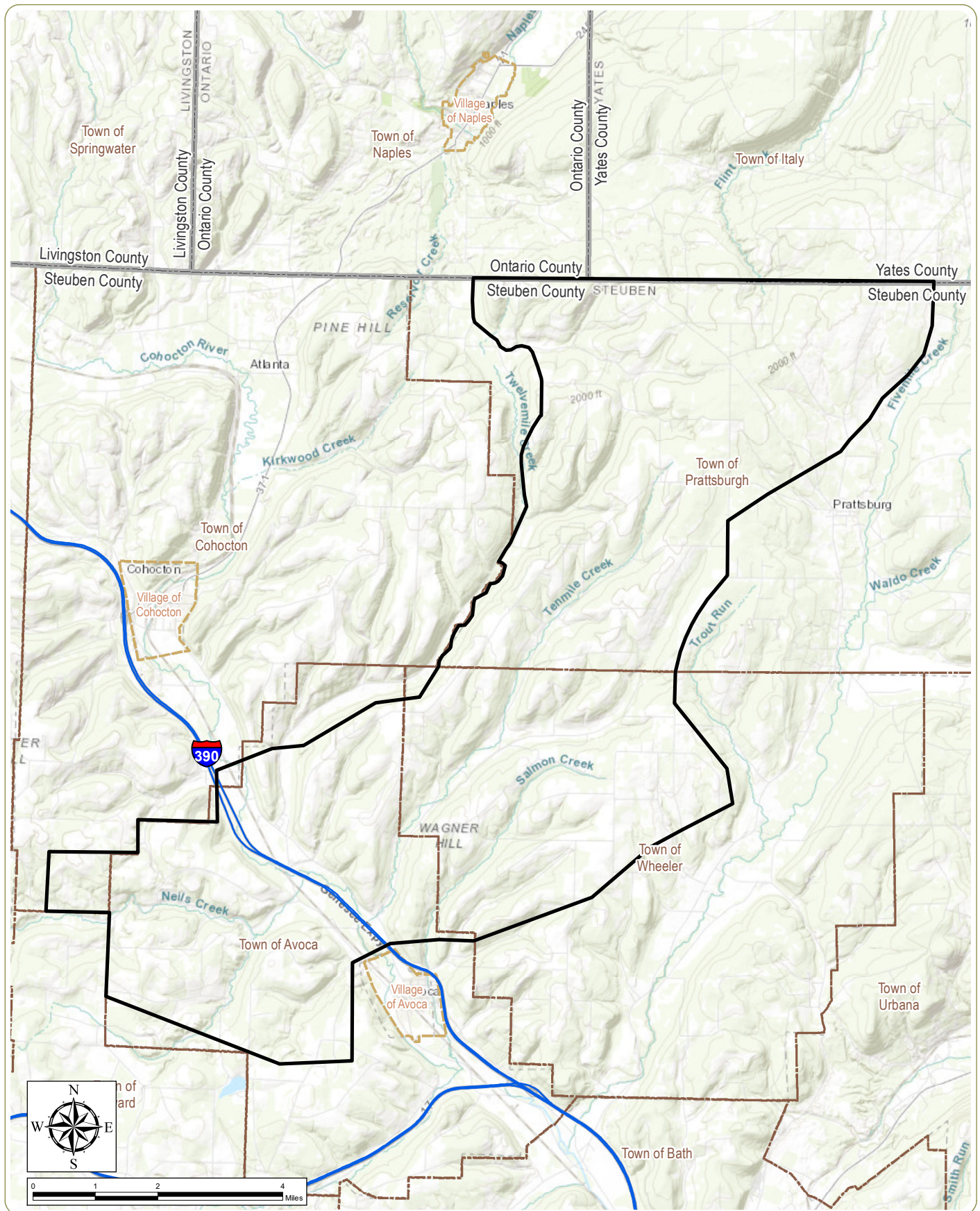
Towns of Prattsburgh, Avoca, Cohocton, and Wheeler,
Steuben County, New York

Figure 1: Regional Project Location

Notes: 1. Basemap: ESRI ArcGIS Online "World Shaded Relief" map service. 2. This map was generated in ArcMap on August 9, 2019. 3. This is a color graphic. Reproduction in grayscale may misrepresent the data.

-  Facility Area
-  County Boundary





Prattsburgh Wind Farm

Towns of Prattsburgh, Avoca, Cohocton, and Wheeler,
Steuben County, New York

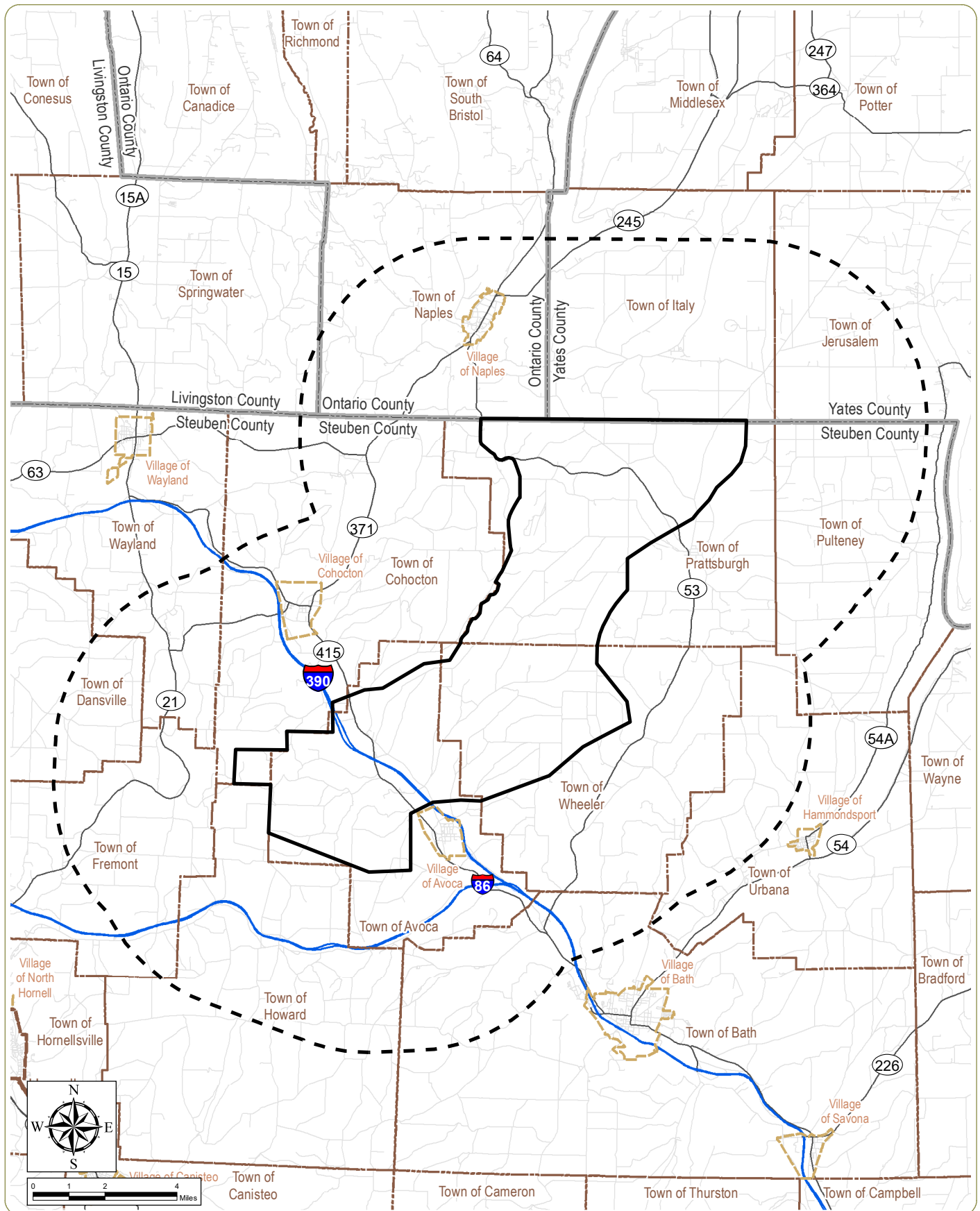
Figure 2: Facility Area

Notes: 1. ESRI ArcGIS Online "World Topographic Map" map service. 2. This map was generated in ArcMap on August 9, 2019. 3. This is a color graphic. Reproduction in grayscale may misrepresent the data.

- Facility Area
- Town Boundary
- City/Village Boundary
- County Boundary



www.edrdpc.com



Prattburgh Wind Farm

Towns of Prattburgh, Avoca, Cohocton, and Wheeler,
Steuben County, New York

Figure 3: 5-Mile Study Area

- | | |
|-------------------|-----------------------|
| Facility Area | City/Village Boundary |
| 5 Mile Study Area | Town Boundary |
| | County Boundary |

Notes: 1. ESRI StreetMap North America, 2008. 2. This map was generated in ArcMap on August 9, 2019. 3. This is a color graphic. Reproduction in grayscale may misrepresent the data.



EXHIBIT A. Notification List

AFFECTED STATE AND FEDERAL AGENCIES

Eileen Feinman, Superintendent
Wayland-Cohocton Central School District
2350 Route 63 North
Wayland, NY 14572

Matt Frahm, Superintendent
Naples Central Schools
136 North Main Street
Naples, NY 14512

Stephen Saxton, Superintendent
Avoca Central School District
17 Oliver Street
Avoca, NY 14809

Christopher Brown, Superintendent
Gorham-Middlesex Central School District
4100 Baldwin Road
Rushville, NY 14544

Kyle Bower, Superintendent
Hammondsport Central School District
8272 Main Street
Hammondsport, NY 14840

Howard Dennis, Superintendent
Penn Yan Central School District
1 School Drive
Penn Yan, NY 14527

Jeffrey A. Black, Superintendent
Prattsburgh Central School District
One Academy Street
Prattsburgh, NY 14873

Cheryl Deusenbery, Deputy Supervisor
Town of Cohocton
19 Main Street
Atlanta, NY 14808

Vincent Spagnoletti, Commissioner
Steuben County Department of Public Works
3 East Pulteney Square
Bath, NY 14810

Deborah Babbitt Henry, Supervisor
Town of Springwater, Livingston County
6976 May Road
Conesus, NY 14435

Patrick Killen, Town Supervisor
Town of Jerusalem
3816 Italy Hill Road
Branchport, NY 14418

Margret Dunn, Town Supervisor
Town of Italy
6060 Italy Valley
Naples, NY 14512

Tamara Hicks, Town Supervisor
Town of Naples
106 South Main Street
PO Box 535
Naples, NY 14512

Leonard McConnel, Town Supervisor
Town of Prattsburgh
19 N Main Street
PO Box 427
Prattsburgh, NY 14873

Mark Illig, Town Supervisor
Town of Pulteney
9226 County Route 74
Pulteney, NY 14874

John Webster, Town Supervisor
Town of Urbana
8014 Pleasant Valley Road
Bath, NY 14810

Janice Sahrle, Mayor
Village of Cohocton
PO Box 330
Cohocton, NY 14826

Brian Schenk, Mayor
Village of Naples
102 S. Main Street
PO Box 353

Naples, NY 14512

Jack Wheeler, County Manager
Steuben County
3 East Pulteney Square
Bath, NY 14810

Mary A. Krause, County Administrator
Ontario County
20 Ontario Street
Canandaigua, NY 14424

Ian Coyle, County Administrator
Livingston County
6 Court Street, Room 302
Geneseo, NY 14454

Winona B. Flynn, County Administrator
Yates County
417 Liberty Street, Suite 1002
Penn Yan, NY 14527

James Johnson, Executive Director
Steuben County Industrial Development Agency
7234 Route 54 North, PO Box 393
Bath, NY 14810

Chelsea M. Robertson, Executive Director
Southern Tier Central Regional Planning & Development Board
8 Denison Parkway East, Suite 310
Corning, NY 14830

Bill Wagoner, Chief
Cohocton Volunteer Fire Department
PO Box 375
Cohocton, NY 14826

Prattsburgh Protectives Fire Department
15 Allis St
Prattsburgh, NY 14873

Robert Bossie, Chief
Avoca Hose Company and Ambulance Corps
PO Box 447
Avoca, NY 14809

Timothy D. Marshall, Director
Steuben County Office of Emergency Services

3 East Pulteney Square
Bath, NY 14810

Steuben County Soil and Water Conservation District
415 West Morris Street
Bath, NY 14810

Thomas L Richardson, Commander
Steuben County American Legion
61 Main Street
Canisteo, NY 14823

Pam Colomaio, President
Cornell Cooperative Extension Steuben County
20 East Morris Street
Bath, NY 14810

Judith Hall, President
Cohocton Wind Watch
PO Box 638
Naples, NY 14512

Brian M. Kolb, 131st District
NYS Assembly
607 West Washington Street, Suite 2
Geneva, NY 14456

Philip Palmesano, 132nd District
NYS Assembly
105 East Steuben Street
Bath, NY 14810

Majorie L. Byrnes, 133rd District
NYS Assembly
30 Office Park Way
Pittsford, NY 14534

Joseph M. Giglio, 148th District
NYS Assembly
700 West State Street
Olean, NY 14760

Thomas O'Mara, 58th District
NYS Senator
105 East Steuben Street

Bath, NY 14810

Richard Funke, 55th District
NYS Senator
230 Packett's Landing
Fairport, NY 14450

Basil Seggos, Commissioner
NYS Department of Environmental Conservation
625 Broadway
Albany, NY 12233

Paul D'Amato, Region 8 Regional Director
NYS Department of Environmental Conservation
6274 East Avon-Lima Road
Avon, NY 14414

Kelly Tyler, Director of Communities and Local
Government Outreach
**New York State Energy Research and
Development Authority (NYSERDA)**
726 Exchange Street, Suite 821
Buffalo, NY 14210

Donna Howell, Southern Tier Regional Director
Empire State Development Corporation
333 East Water Street, 4th floor
Elmira, NY 14901

Letitia James
NYS Attorney General
State Capital Building
Albany, NY 12224

Richard Ball, Commissioner
NYS Department of Agriculture and Markets
10B Airline Drive
Albany, NY 12235

Rossana Rosado, Secretary of State
NYS Department of State
One Commerce Plaza
99 Washington Avenue
Albany, NY 12231

RoAnn Destito, Commissioner
NYS Office of General Services
41st Floor, Corning Tower
Empire State Plaza
Albany, NY 12242

Andrew M. Cuomo
NYS Governor
NYS State Capitol Building
Albany, NY 12224

Chris Baker, Commissioner
**NYS Division of Homeland Security and
Emergency Services**
1220 Washington Avenue
State Office Campus, Building 7A, Suite 710
Albany, NY 12242

Daniel McKay, Deputy Commissioner
New York State Division for Historic Preservation
**New York State Office of Parks, Recreation &
Historic Preservation**
Peebles Island State Park
P.O. Box 189
Waterford, NY 12188-0189

Fred Bonn, Chair of Regional Commission
OPRHP Finger Lakes Region
2221 Taughannock Road
Trumansburg, NY 14886

John B. Rhodes, Chair
NYS Department of Public Service
Empire State Plaza
Agency Building 3
Albany, NY 12223

Jeff Kirby, Chief Executive Officer
New York Farm Bureau
159 Wolf Road
PO Box 5330
Albany, NY 12205

Brian Kelly, Region 6 Regional Director
NYS Department of Transportation
107 Broadway
Hornell, NY 14843

Marie Therese Dominguez, Acting Commissioner
NYS Department of Transportation, Main Office
50 Wolf Road
Albany, NY 12232

Richard J. Dewey, President & CEO
New York Independent System Operator

10 Krey Boulevard
Rensselaer, NY 12144

LTC Jason A. Toth
Regulatory Branch, Buffalo District Office
US Army Corps of Engineers
1776 Niagara Street
Buffalo, NY 14207

US Fish and Wildlife Service
3817 Luker Road
Cortland, NY 13045

Jennifer Solomon, Eastern Region Regional
Administrator
US Federal Aviation Administration
1 Aviation Plaza
Jamaica, NY 11434

Ronald Tickle, Executive Director
US Department of Defense Siting Clearinghouse
3400 Defense Pentagon, Room 5C646
Washington, DC 10301

Charles E. Schumer
US Senator
15 Henry Street, Room 100AF
Binghamton, NY 13901

Kirsten E. Gillibrand
US Senator
100 State Street, Room 4195
Rochester, NY 14614

Tom Reed, 23rd District
US Representative
89 West Market Street
Corning, NY 14830

Chris Collins, 27th District
US Representative
128 Main Street
Geneseo, NY 14454

Carl A. Taylor, President
NYSEG
4425 Old Vestal Road
Vestal, NY 13850

David Bauer, President
National Fuel and Gas

6363 Main Street
Williamsville, NY 14221

SunEdison
Corporate HQ
13736 Riverport Drive
Maryland Heights, MO 63043

Verizon
Contact TBD

Frontier
Contact TBD

Time Warner Cable
Contact TBD

Quinn Wright, Executive Director
Finger Lakes Trail Conference
6111 Visitor Center Road
Mount Morris, NY 14510

Sunoco Product Pipeline
Owner Contact TBD

Bob Clark, President
Bath Sno-flakes Snowmobile Association
6993 County Route 15
Bath, NY 14810

**National Telecommunications and Information
Administration**
Herbert C. Hoover Building (HCHB)
1401 Constitution Avenue, N.W.
Washington, D.C. 20230

Steuben County Conference & Visitors Bureau
1 West Market Street #201
Corning, NY 14830

Jamie Earl, County Executive Director
Farm Service Agency
415 W. Morris St.
Bath, NY 14810

Mark Wolfanger
President
Quad County Snowmobile Club, Inc.
P.O. Box 149
Atlanta, NY 14808

Matt Smith, President
Ten Towns Snowmobile Club
2270 Taft Road
Woodhull, NY 14898

Edward Merry, President
Steuben County Farm Bureau
117 East Stueben St.
Bath, NY 14810

Rickey L. Armstrong Sr., President
Seneca Nation of Indians
Tribal Historic Preservation office
90 O:hi'yoh Way
Salamanca, NY 14779

Tuscarora Nation of Indians
Tuscarora Environmental Program
2045 Upper Mountain Road
Sanborn, NY 14132

Sara Olson, Superintendent
RTCA National Park Service
Roosevelt-Vanderbilt NHS
4097 Albany Post Rd.
Hyde Park, NY 12538

Amy Dlugos, Planning Director
Steuben County Planning Department
3 East Pulteney Square
Bath, NY 14810

Darlene Smith, Director
Steuben County Department of Public Health
3 East Pulteney Square
Bath, NY 14810

John Perry, Highway Superintendent

Town of Prattsburgh Highway Department
19 N Main Street
PO Box 427
Prattsburgh, NY 14873

Jenny Groen, 4-H/Youth Program Leader
Loon Lake Raiders (Equestrian)
20 East Morris Street
Bath, NY 14180

Andrea Katchmark, Executive Director
North County Trail Association
229 East Main Street
Lowell, MI 49331

Cohocton Wind Farm

Baron Wind Farm

Canisteo Wind Farm
2 South Main Street
Canisteo, NY 14823

Bill and Susan Morehouse
Cohocton Free
PO Box 122
Cohocton, NY 14826

Steuben County Environmental Management Council
3 East Pulteney Square
Bath, NY 14810

Nick Pelham, Secretary and Fair Manager
Steuben County Agricultural Society
15 East Washington Street
Bath, NY 14810

EXHIBIT B. Goals and Objectives for Stakeholder Involvement

Affected Agency and Municipality Consultations

Stakeholder	Consultation Goals	Implementation Plan and Schedule
Host Municipalities <ul style="list-style-type: none"> • Steuben County • Town of Prattsburgh • Town of Avoca • Town of Wheeler • Town of Cohocton 	<ul style="list-style-type: none"> - Community outreach - Solicit local feedback - Disseminate Information regarding the proposed Facility, Article 10, the Intervenor Funding process, the PSS/scoping process, the Application, etc. - Collect information necessary to complete the Article 10 process - Identify community concerns, local landmarks, land uses, and resources - Adjust study scope/methodology based on stakeholder input and concerns - Provide contact information for Facility and opportunities for direct engagement with public - Review local laws to determine anticipated compliance or need for waivers - Consult to inform the Applicant's estimate of incremental municipal, public authority, or utility operating and infrastructure costs that will be incurred for police, fire, emergency, water, sewer, solid waste disposal, highway maintenance and other municipal, public authority, or utility services during the construction and operation phases of the facility - Develop avoidance, minimization and mitigation plans to address potential Facility impacts 	<ul style="list-style-type: none"> - Attend public information sessions⁷ and local meetings, develop informational mailings, and update the Facility website - Develop a dedicated Facility email address to respond to inquiries and accept public comment - Initiate direct contact with local officials and boards regarding PSS submission, Application filing, etc., at least two weeks prior to filing - Consult with appropriate officials/departments regarding specific topics, such as road use, visual impact assessment, land use and comprehensive plans, and exchange other information sought by the Applicant or by host municipalities - Provide timely public/stakeholder notices and information on public comment periods, scheduled information sessions, and opportunities for participation - Obtain all relevant local laws, building codes, comprehensive plans, zoning maps, etc. - Discuss potential avoidance, minimization, and mitigation measures to address identified impacts - Initiate direct contact through telephone calls, mailings, information sessions, and discussions, as appropriate

⁷ Currently planned for Fall/Winter of 2019

Stakeholder	Consultation Goals	Implementation Plan and Schedule
<p>Host School Districts</p> <ul style="list-style-type: none"> • Avoca Central School District • Naples Central School District • Prattsburgh Central School District • Wayland-Cohocton School District 	<ul style="list-style-type: none"> - Solicit local feedback - Disseminate information regarding the proposed Facility - Discuss impacts to school bus routes, district operating budget, and school operations, if any - Adjust study scope/methodology based on stakeholder input and concerns - Provide contact information for Facility and opportunities for direct engagement with public - Develop avoidance, minimization and mitigation plans to address potential Facility impacts - Consult to inform the Applicant's estimate of incremental school district operating and infrastructure costs due to the construction and operation of the facility 	<ul style="list-style-type: none"> - Provide timely stakeholder notices and information - Initiate direct contact with local officials and boards regarding PSS submission, Application filing, etc., at least two weeks prior to filing - Work with school officials to develop transportation plans to minimize or avoid delays/traffic problems associated with construction of the Facility - Schedule information sessions - Gather local feedback - Discuss potential avoidance, minimization, and mitigation measures to address identified impacts - Initiate direct contact through telephone calls, mailings, information sessions, and discussions, as appropriate
<p>Host Municipality Highway Departments</p> <ul style="list-style-type: none"> • New York State Department of Transportation • Steuben County Highway Department • Town of Prattsburgh Highway Superintendent • Town of Wheeler Highway Department • Town of Avoca Highway Department 	<ul style="list-style-type: none"> - Solicit local feedback - Disseminate information regarding the proposed Facility - Gather information on transportation routes and the condition and capacity of local roads - Discuss impacts to transportation and local infrastructure during and after construction; transportation routes, improvements and use of rights-of-way; and contingency plans in the event of an emergency - Develop avoidance, minimization and mitigation plans to address potential Facility impacts 	<ul style="list-style-type: none"> - Obtain and review Highway Department requirements for temporary radius improvements, transportation routes, and use of rights-of-way - Initiate direct contact with local officials and boards regarding PSS submission, Application filing, etc., at least two weeks prior to filing - Meet with highway officials to discuss concerns, potential impacts, avoidance/minimization strategies and potential mitigation - Work with local officials to develop transportation plans to minimize or avoid delays/traffic problems associated with construction of the Facility - Provide timely stakeholder notices and information - Initiate direct contact through telephone calls, mailings, information sessions, and discussions, as appropriate

Stakeholder	Consultation Goals	Implementation Plan and Schedule
<p>Adjacent Municipalities</p> <ul style="list-style-type: none"> • Ontario County • Yates County • Livingston County • Town of Springwater • Town of Naples • Town of Howard • Town of Italy • Town of Jerusalem • Town of Cohocton • Town of Pulteney • Town of Urbana • Town of Wheeler • Town of Wayland • Town of Fremont • Town of Bath • Town of Avoca • Village of Cohocton • Village of Naples • Village of Avoca 	<ul style="list-style-type: none"> - Community outreach - Solicit local feedback - Disseminate information regarding the proposed Facility; Article 10; the Intervenor Funding process; the PSS/scoping process; the Application; etc. - Collect all information necessary to complete the Article 10 process - Identify community concerns, local landmarks, land uses, and resources - Adjust study scope/methodology based on stakeholder input and concerns - Provide contact information for the Facility and opportunities for direct engagement with the public - Review local laws to determine anticipated compliance or need for waivers - Consult to inform the Applicant's estimate of incremental municipal, public authority, or utility operating and infrastructure costs that will be incurred for police, fire, emergency, water, sewer, solid waste disposal, highway maintenance and other municipal, public authority, or utility construction and operation phases of the facility - Develop avoidance, minimization and mitigation plans to address potential Facility impacts 	<ul style="list-style-type: none"> - Attend public information sessions and local meetings, develop informational mailings, and launch and update the Facility website - Develop a dedicated Facility email address to respond to inquiries and accept public comment - Initiate direct contact with local officials and boards regarding PSS submission, Application filing, etc., at least two weeks prior to filing - Consult with appropriate officials/departments regarding specific topics, such as road use, visual impact assessment, land use and comprehensive plans, and exchange other information sought by the Applicant or adjacent municipalities - Provide timely public/stakeholder notices and information on public comment periods, scheduled information sessions, and opportunities for participation - Obtain relevant local laws, building codes, comprehensive plans, zoning maps, etc. - Discuss potential avoidance, minimization, and mitigation measures to address identified impacts - Initiate direct contact through telephone calls, mailings, information sessions, and discussions, as appropriate
<p>Adjacent School Districts</p> <ul style="list-style-type: none"> • Bath Central School District • Gorham-Middlesex Central School District (Marcus Whitman) • Hammondsport Central School District • Penn Yan Central School District • Canisteo-Greenwood Central School District • Hornell Central School District • Arkport Central School District 	<ul style="list-style-type: none"> - Solicit local feedback - Disseminate information regarding the proposed Facility - Develop avoidance, minimization and mitigation plans to address potential Facility impacts 	<ul style="list-style-type: none"> - Provide timely stakeholder notices and information - Initiate direct contact with local officials and boards regarding PSS submission, Application filing, etc., at least two weeks prior to filing - Consult with the school districts to ascertain local concerns - Work with school officials to develop transportation plans to minimize or avoid delays/traffic problems associated with construction of the Facility - Schedule information sessions - Gather local feedback - Initiate direct contact through telephone calls, mailings, information sessions, and discussions, as appropriate

Stakeholder	Consultation Goals	Implementation Plan and Schedule
<p>Emergency Response Organization</p> <ul style="list-style-type: none"> • Steuben County Office of Emergency Services • Prattsburgh Protective Fire Department • Cohocton Volunteer Fire Department • NYS Division of Homeland Security and Emergency Services • US Department of Defense 	<ul style="list-style-type: none"> - Inform emergency responders about the proposal, construction and operation processes, potential impacts on transportation routes, and contingency plans - Solicit local feedback - Disseminate information regarding the proposed Facility - Develop avoidance, minimization and mitigation plans to address potential Facility impacts 	<ul style="list-style-type: none"> - Provide timely stakeholder notices and information - Initiate direct contact with local officials and boards regarding PSS submission, Application filing, etc., at least two weeks prior to filing - Consult with departments to ascertain local concerns - Work with emergency responders to develop transportation plans and contingency plans to minimize or avoid delays/traffic problems associated with construction of the Facility - Schedule information sessions - Gather local feedback - Initiate direct contact through telephone calls, mailings, information sessions, and discussions, as appropriate
<p>Aviation and Defense</p> <ul style="list-style-type: none"> • D.C. Helicopters • US Federal Aviation Administration 	<ul style="list-style-type: none"> - Ascertain potential Facility impacts on radar, defense systems, flight paths, and facility operations - Adjust study scope/methodology based on stakeholder input and concerns - Solicit stakeholder feedback - Disseminate information regarding the proposed Facility - Develop avoidance, minimization and mitigation plans to address potential Facility impacts 	<ul style="list-style-type: none"> - Request an informal Department of Defense review of the proposed construction or alteration, in accordance with 32 CFR, Section 211.7; or a formal Department of Defense review of the proposed construction or alteration in accordance with 32 CFR, Section 211.6 FAA - Consult, as required by law, on potential impacts to airport operations and radar, as well as potential emergency lighting requirements - Consult with stakeholders to identify any potential impacts to radar, flight paths, national defense, or other concerns - Discuss potential avoidance, minimization, and mitigation measures to address identified impacts - Identify the necessity of consultations with the operators of airports or heliports - Include outreach to inform such operators of the proposed facility and its location prior to the submission of the Preliminary Scoping Statement - Consult with operators of airports and heliports that are nonmilitary facilities, providing a detailed map and description of such construction or alteration to such operators, and a request for review of and comment on such construction or alteration by such operators

Stakeholder	Consultation Goals	Implementation Plan and Schedule
<p>Utilities/Communication</p> <ul style="list-style-type: none"> • Spectrum • National Telecommunications and Information Administration • New York State Electric and Gas • Sunoco Product Pipeline 	<ul style="list-style-type: none"> - Ascertain potential impacts of the Facility on communications infrastructure, energy transmission and interconnection, and the electric grid - Solicit stakeholder feedback - Disseminate information regarding the proposed Facility - Develop avoidance, minimization and mitigation plans to address potential Facility impacts 	<ul style="list-style-type: none"> - Consult with stakeholders to identify any potential impacts to utility infrastructure, communications, grid reliability/security, etc. - Discuss potential avoidance, minimization, and mitigation measures to address identified impacts - Provide timely stakeholder notices and information - Initiate direct contact through telephone calls, mailings, information sessions, and discussions, as appropriate
<p>Environmental Agencies and Public Interest Groups</p> <ul style="list-style-type: none"> • Audubon Society • New York State Department of Environmental Conservation (NYSDEC) • Sierra Club • The Nature Conservancy • The Wetlands Trust • US Fish and Wildlife Service • Tuscarora Environmental Program • Steuben County Environmental Management Council 	<ul style="list-style-type: none"> - Ascertain potential Facility impacts on environmental resources, including avian and bat species, plants, wetlands, protected species and habitat, land use, public health and safety, emissions, noise, geology/soils, water resources, agricultural lands, and other matters of concern to stakeholders - Collect information necessary to complete the Article 10 process - Identify agency concerns, state parks and scenic resources, wildlife management areas, conservation easements, protected lands, and other resources - Adjust study scope/methodology based on stakeholder input and concerns - Consult with agencies regarding regulatory compliance, permit requirements, etc. - Solicit stakeholder feedback - Disseminate information regarding the proposed Facility - Develop avoidance, minimization and mitigation plans to address potential Facility impacts 	<ul style="list-style-type: none"> - Review bird/bat studies with NYSDEC and FWS to determine adequacy of scope and methodology, and compliance of proposed plan with established regulations, guidance, and study Protocols - Confer with NYSDEC and Army Corps regarding wetlands delineations, stream crossings, and other relevant issues - Confer with NYSDEC and FWS regarding potential concerns associated with endangered species, the need for incidental take permits, and the Migratory Bird Treaty Act - Confer with NYSDEC and NYSDEC regarding Water Quality Certification requirements and process - Consult to develop an acceptable input dataset, including modeling for the Applicant's proposed Facility and inputs for the emissions analysis - Consult with state agencies and authorities to determine whether the Applicant has correctly identified applicable requirements, permits, etc., mandated by these agencies. - Provide timely stakeholder notices and information - Initiate direct contact through telephone calls, mailings, information sessions, and discussions, as appropriate

Stakeholder	Consultation Goals	Implementation Plan and Schedule
<p>Agricultural Agencies and Stakeholders</p> <ul style="list-style-type: none"> • Steuben County Farm Bureau • Steuben County Agricultural Society • Steuben County Soil and Water Conservation District • New York Agricultural Land Trust • New York State Department of Agriculture and Markets • New York Farm Bureau • Farm Service Agency • Steuben County Agricultural Society 	<ul style="list-style-type: none"> - Ascertain potential impacts of the Facility on historical and cultural resources - Ascertain potential socioeconomic effects of Facility Consultation with agencies regarding regulatory compliance and agency guidance - Identify resources and landmarks of local concern - Develop avoidance, minimization and mitigation plans to address potential Facility impacts - Adjust study scope/methodology based on stakeholder input and concerns 	<ul style="list-style-type: none"> - Solicit feedback from stakeholders on any potential agricultural concerns unique to the Study Area - Confer with Ag & Markets regarding compliance with agency guidance and policies - Request information or guidance from stakeholders on potential agricultural impacts, as well as potential avoidance, minimization, and mitigation measures to address those impacts - Consult with state agencies and authorities to determine whether the Applicant has correctly identified applicable requirements, permits, etc., mandated by these agencies. - Provide timely stakeholder notices and information - Initiate direct contact through telephone calls, mailings, information sessions, and discussions, as appropriate

Stakeholder	Consultation Goals	Implementation Plan and Schedule
<p>Historical/Cultural/ Socioeconomic Groups</p> <ul style="list-style-type: none"> • Steuben County Planning Department • Steuben County Industrial Development Agency • NYSDEC (Environmental Justice Issues) • Empire State Development Corporation • NYS Office of Parks, Recreation and Historic Preservation 	<ul style="list-style-type: none"> - Ascertain potential impacts of the Facility on energy transmission and interconnection, and the electric grid - Discuss the Facility's compliance with state energy planning objectives - Solicitation of stakeholder feedback - Information dissemination on proposed Facility - Develop avoidance, minimization and mitigation plans to address potential Facility impacts - Achieve compliance with Article 10 regulatory requirements, an adequate PIP and PSS, a complete Application, etc. - Adjustment of study scope/methodology based on stakeholder input and concerns 	<ul style="list-style-type: none"> - Consult in accordance with Section 14.09 of the New York State Parks, Recreation, and Historic Preservation Law and/or Section 106 of the Historic Preservation Act, - Consult with OPRHP and NYSDEC regarding cultural resources studies and to determine the need for and scope of work for any required Phase II cultural resources study - Consult to establish representative viewpoints for the photographic simulations of the facility and interconnections - Gather information on resources and landmarks of local concern for cultural impact assessment - Develop information on potential socioeconomic effects of Facility, including job creation, tax revenues, and incidental effects on local business and industry - Schedule information sessions - Gather local feedback - Consult with agencies and authorities to determine whether the Applicant has correctly identified applicable requirements, permits, etc., mandated by these agencies. - Discuss potential avoidance, minimization, and mitigation measures to address identified impacts - Initiate direct contact through telephone calls, mailings, information sessions, and discussions, as appropriate

Stakeholder	Consultation Goals	Implementation Plan and Schedule
<p>Energy Agencies and Groups</p> <ul style="list-style-type: none"> • New York State Energy Research and Development Authority (NYSERDA) • NY Independent System Operator • NYS Department of Public Service (NYSDEC) 	<ul style="list-style-type: none"> - Ascertain potential impacts of the Facility on energy transmission and interconnection, and the electric grid - Discuss the Facility's compliance with state energy planning objectives - Solicit stakeholder feedback - Disseminate information on proposed Facility - Develop avoidance, minimization and mitigation plans to address potential Facility impacts - Achieve compliance with Article 10 regulatory requirements, develop an adequate PIP and PSS, a complete Application, etc. - Adjust study scope/methodology based on stakeholder input and concerns 	<ul style="list-style-type: none"> - Consult to develop an acceptable input data set, including modeling for the Applicant's proposed facility and inputs for required emissions and electric system effects analysis - Work with NYISO to coordinate System Reliability Impact Study (SRIS) - Confer with stakeholders to ascertain the ways in which the Facility will advance state energy planning objectives and be consistent with the State Energy Plan and state policy - Consult with the state agencies and authorities whose requirements are the subject of the State Laws and Regulations exhibit to determine whether the Applicant has correctly identified such requirements - Consult to identify applicable requirements to be used to demonstrate the degree of compliance with relevant applicable reliability criteria of the Northeast Power Coordinating Council Inc., New York State Reliability Council, and the local Interconnecting transmission utility, including any criteria regarding blackstart and fuel switching capabilities - Provide timely stakeholder notices and information - Initiate direct contact through telephone calls, mailings, information sessions, and discussions, as appropriate
<p>Other Affected Federal and State Agencies</p> <ul style="list-style-type: none"> • NYS Attorney General • NYS Department of Health • NYS Department of State • US Army Corps of Engineers 	<ul style="list-style-type: none"> - Contact Stakeholders - Disseminate Information regarding the Facility, Article 10, and Intervenor Funding - Provide contact information - Identify any specific issues or concerns - Schedule follow up meeting(s) and consultation(s), as appropriate - Adjust study scope/methodology based on stakeholder concerns 	<ul style="list-style-type: none"> - Consult with agencies and authorities to determine whether the Applicant has correctly identified applicable requirements, permits, etc., mandated by these agencies. - Provide timely stakeholder notices and information - Ensure scope and methodology of public health and safety studies are adequate to address - Initiate direct contact through telephone calls, mailings, information sessions, and discussions, as appropriate.

Stakeholder	Consultation Goals	Implementation Plan and Schedule
<p>Elected Representatives</p> <ul style="list-style-type: none"> • Charles E. Schumer, US Senator • Tom Reed, US Representative, 23rd District • Chris Collins, US Representative, 27th District • Kirsten E. Gillibrand, US Senator • Brian M. Kolb, 131st District NYS Assembly • Philip Palmesano, 132nd District NYS Assembly • Majorie L. Byrnes, 133rd District NYS Assembly • Joseph M. Giglio, 148th District NYS Assembly • Thomas O'Mara, 58th District NYS Assembly • Richard Funke, 55th District NYS Assembly • NYS Governor's Office 	<ul style="list-style-type: none"> - Contact representatives - Disseminate Information regarding the Facility and provide contact info - Identify any specific issues or concerns - Schedule follow up meeting(s) and consultation(s), as appropriate 	<ul style="list-style-type: none"> - Provide notifications in per 1000.5 Pre-Application Procedures. - Provide timely stakeholder notices and information - Initiate direct contact through telephone calls, mailings, information sessions, and discussions, as appropriate
<p>Other Stakeholders/Agencies</p> <ul style="list-style-type: none"> • Seneca Indian Nation • Tuscarora Indian Nation 	<ul style="list-style-type: none"> - Contact Stakeholders - Disseminate Information regarding the Facility, Article 10, and Intervenor Funding - Provide contact information - Identify any specific issues or concerns - Schedule follow up meeting(s) and consultation(s), as appropriate 	<ul style="list-style-type: none"> - Initiate early discussions with Native American tribes, and the SHPO, regarding cultural resources under Part 106 in advance of filing the PSS. - Provide timely stakeholder notices and information - Initiate direct contact through telephone calls, mailings, information sessions, and discussions, as appropriate

EXHIBIT C. Example PIP Tracking Log

Prattsburgh Wind Farm PIP Tracking Log

[illegible]