

STATE OF NEW YORK  
BOARD ON ELECTRIC GENERATION SITING AND THE ENVIRONMENT

---

Application of Cape Vincent Wind Power, LLC, for a  
Certificate of Environmental Compatibility and Public Need to  
Construct an Approximately 200-285 Megawatt Wind Electric  
Generating Facility in the Town of Cape Vincent, New York

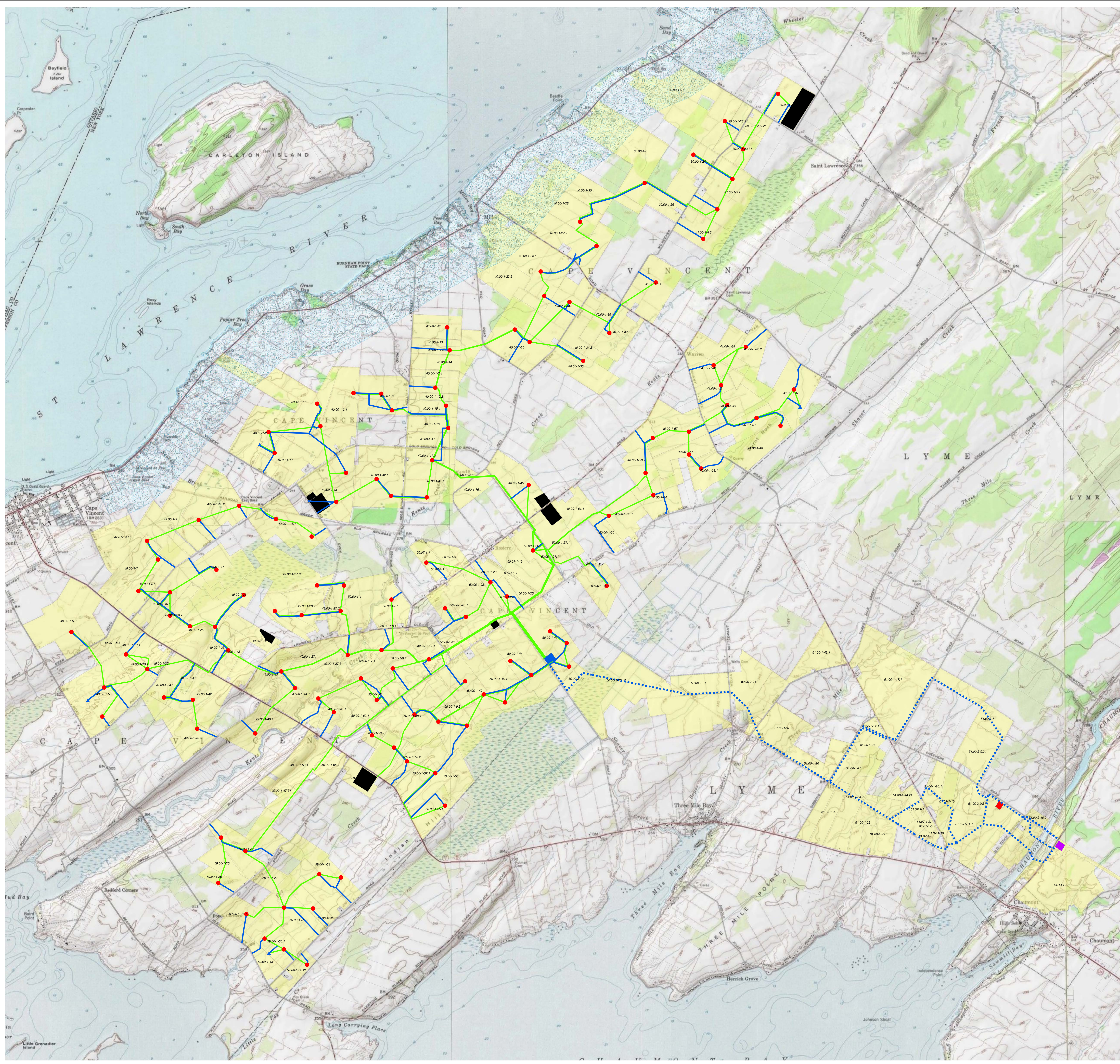
---

Case 12-F-0410

**PRELIMINARY SCOPING STATEMENT**

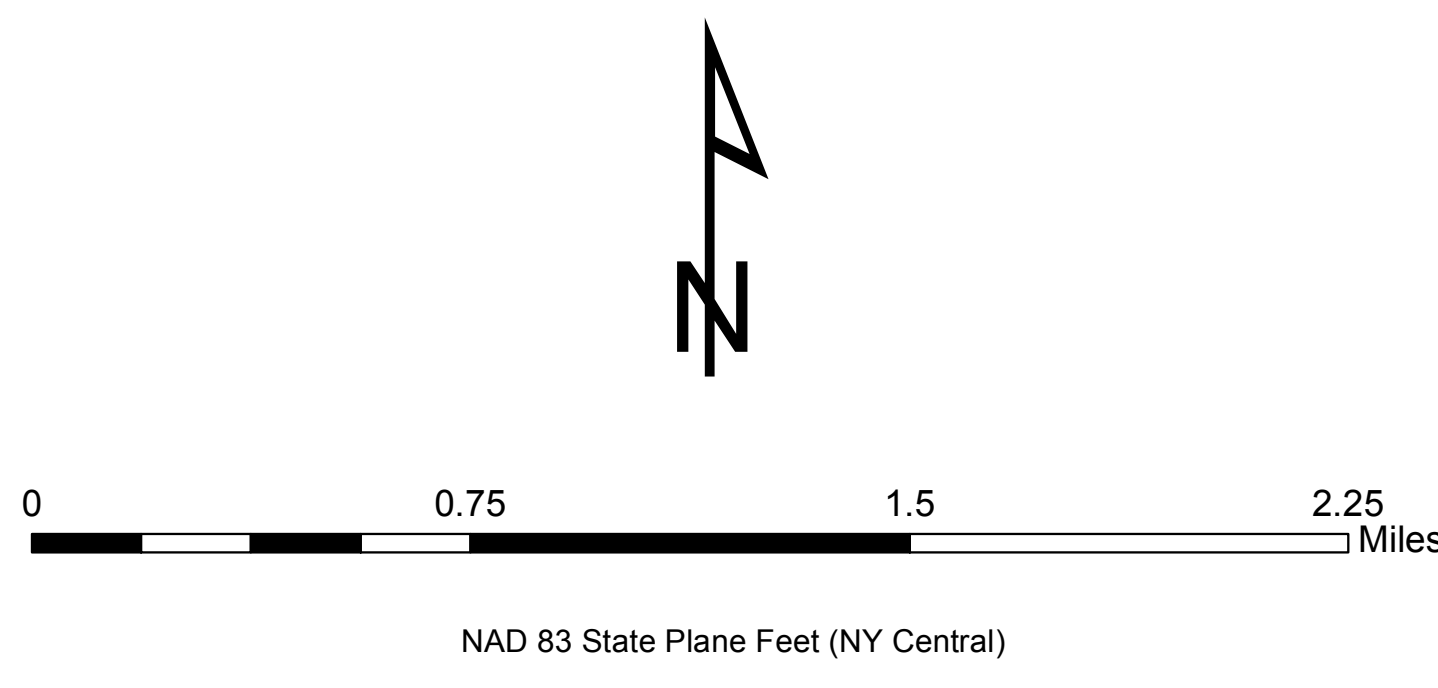
**EXHIBIT A**

**LOCATIONS OF FACILITIES**



### LEGEND

- Proposed Array – 124 Turbines
- ▲ Proposed Meteorological Tower Locations
- Proposed Access Roads
- Proposed Collection
- - - Proposed Generator Interconnection Line Routes
- Facility Areas: batch, laydown, storage, O&M building
- Proposed Project Substation
- Proposed Switching Station
- Point of Interconnection Substation
- Land: Leased, Under Easement, or Potential Lease/Easement
- Town of Cape Vincent - River Front (RF) District



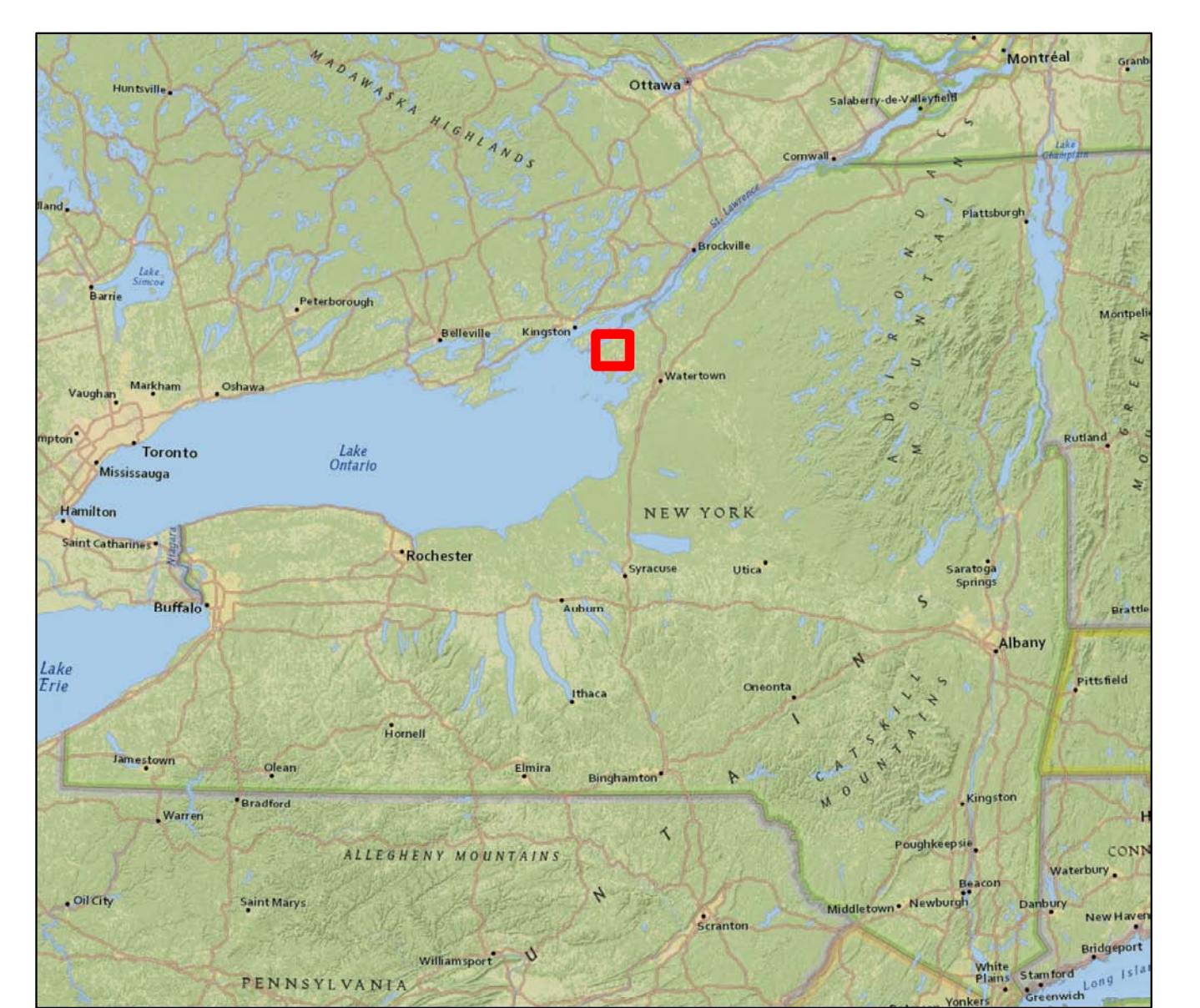
**NOTES:**

Parcel Data from Jefferson County  
 Background : © 2010 National Geographic Society, Esri, DeLorme, NAVTEQ, UNEP-WCMC, USGS, NASA, ESA, METI, NRCAN, GEBCO, NOAA, IPC

All project components in the Town of Cape Vincent are sited in the Agricultural and Residential District (AR)

**\*\*Information Subject to Change March 2013 \*\***

**\*\*PROPRIETARY INFORMATION\*\***  
 This drawing is proprietary information owned by BP Wind Energy NA, Inc. Any unauthorized reproduction or distribution is prohibited. Subject to Change.



Town of Cape Vincent, Town of Lyme  
 Village of Chaumont  
 Jefferson County, NY



**Proposed Cape Vincent Wind Farm**

**Location of Facilities  
 Exhibit A**