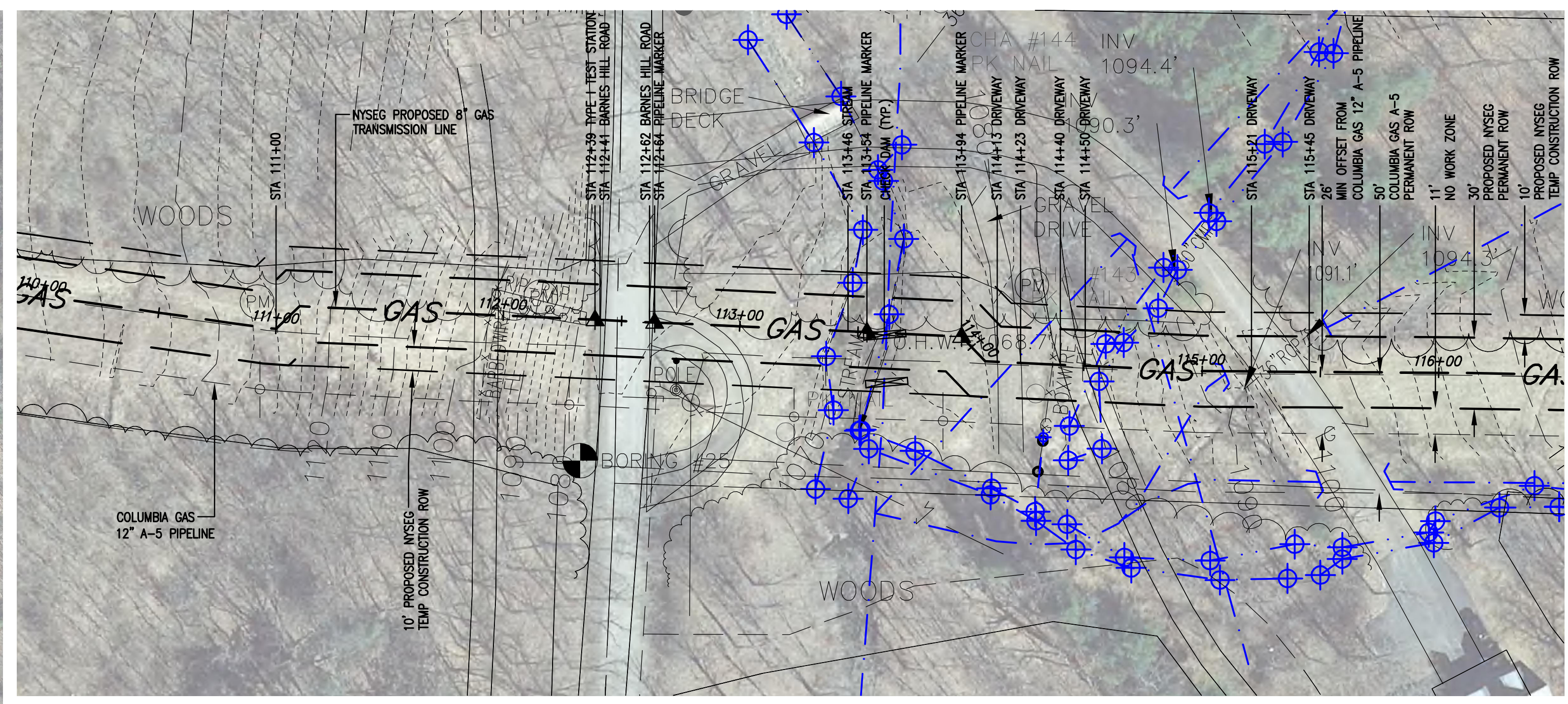
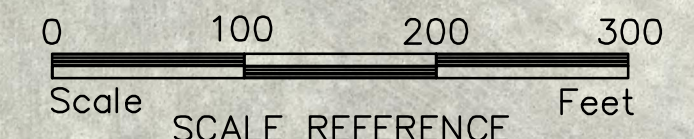
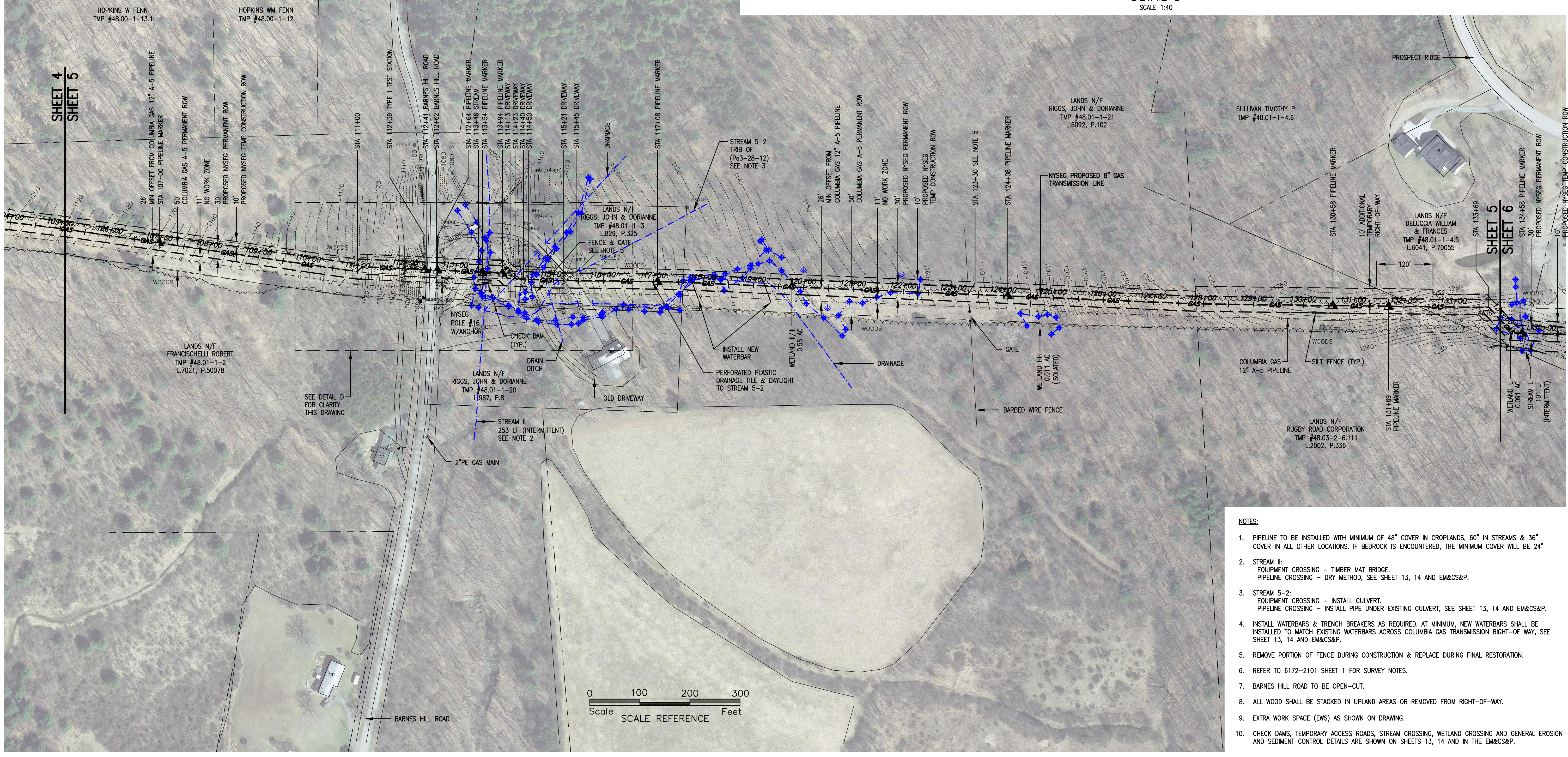


BENTLEY RICHARD
 TMP #48.00-1-11.2



DETAIL D
 SCALE: 1:40



- NOTES:**
- PIPELINE TO BE INSTALLED WITH MINIMUM OF 48" COVER IN CROPLANDS, 60" IN STREAMS & 36" COVER IN ALL OTHER LOCATIONS. IF BEDROCK IS ENCOUNTERED, THE MINIMUM COVER WILL BE 24"
 - STREAM II:
 EQUIPMENT CROSSING - TIMBER MAT BRIDGE.
 PIPELINE CROSSING - DRY METHOD, SEE SHEET 13, 14 AND EM&CS&P.
 - STREAM 5-2:
 EQUIPMENT CROSSING - INSTALL CULVERT.
 PIPELINE CROSSING - INSTALL PIPE UNDER EXISTING CULVERT, SEE SHEET 13, 14 AND EM&CS&P.
 - INSTALL WATERBARS & TRENCH BREAKERS AS REQUIRED. AT MINIMUM, NEW WATERBARS SHALL BE INSTALLED TO MATCH EXISTING WATERBARS ACROSS COLUMBIA GAS TRANSMISSION RIGHT-OF-WAY, SEE SHEET 13, 14 AND EM&CS&P.
 - REMOVE PORTION OF FENCE DURING CONSTRUCTION & REPLACE DURING FINAL RESTORATION.
 - REFER TO 6172-2101 SHEET 1 FOR SURVEY NOTES.
 - BARNES HILL ROAD TO BE OPEN-CUT.
 - ALL WOOD SHALL BE STACKED IN UPLAND AREAS OR REMOVED FROM RIGHT-OF-WAY.
 - EXTRA WORK SPACE (EWS) AS SHOWN ON DRAWING.
 - CHECK DAMS, TEMPORARY ACCESS ROADS, STREAM CROSSING, WETLAND CROSSING AND GENERAL EROSION AND SEDIMENT CONTROL DETAILS ARE SHOWN ON SHEETS 13, 14 AND IN THE EM&CS&P.

No.	By	Date
PA	JH	06/09/11
PB	JH	JULY 20/11
PC	JH	AUG 17/11
PD	JH	AUG 31/11
PE	JH	09/02/11
PF	JH	09/06/11
PG	JH	09/15/11

Submittal / Revision	App'd	Date
ISSUED FOR REVIEW	JH	06/09/11
ISSUED FOR REVIEW	JH	JULY 20/11
ISSUED FOR REVIEW	JH	AUG 17/11
ISSUED FOR REVIEW	JH	AUG 31/11
ISSUED FOR REVIEW	JH	09/02/11
ISSUED FOR REVIEW	JH	09/06/11
UPDATED WETLAND/STREAM IDENTIFICATION	JH	09/15/11

NYSEG
 GAS BUSINESS UNIT
 KIRKWOOD, N.Y.

UNAUTHORIZED ALTERATION OR ADDITION
 OF ANY KIND IS PROHIBITED.
 APPLICABLE STATE AND LOCAL LAWS.

CIA
 International Engineering & Development Corporation
IEDC
 International Engineering & Development Corporation

Designed: _____
 Drawn: RM
 Checked: _____

SENECA WEST PIPELINE
 INTERCONNECT
 CIVIL
 ALIGNMENT PLAN

Issue Date: 11/2011
 Project No.: 22867
 Scale: 1:100