

STATE OF NEW YORK
BOARD ON ELECTRIC GENERATION SITING AND THE ENVIRONMENT

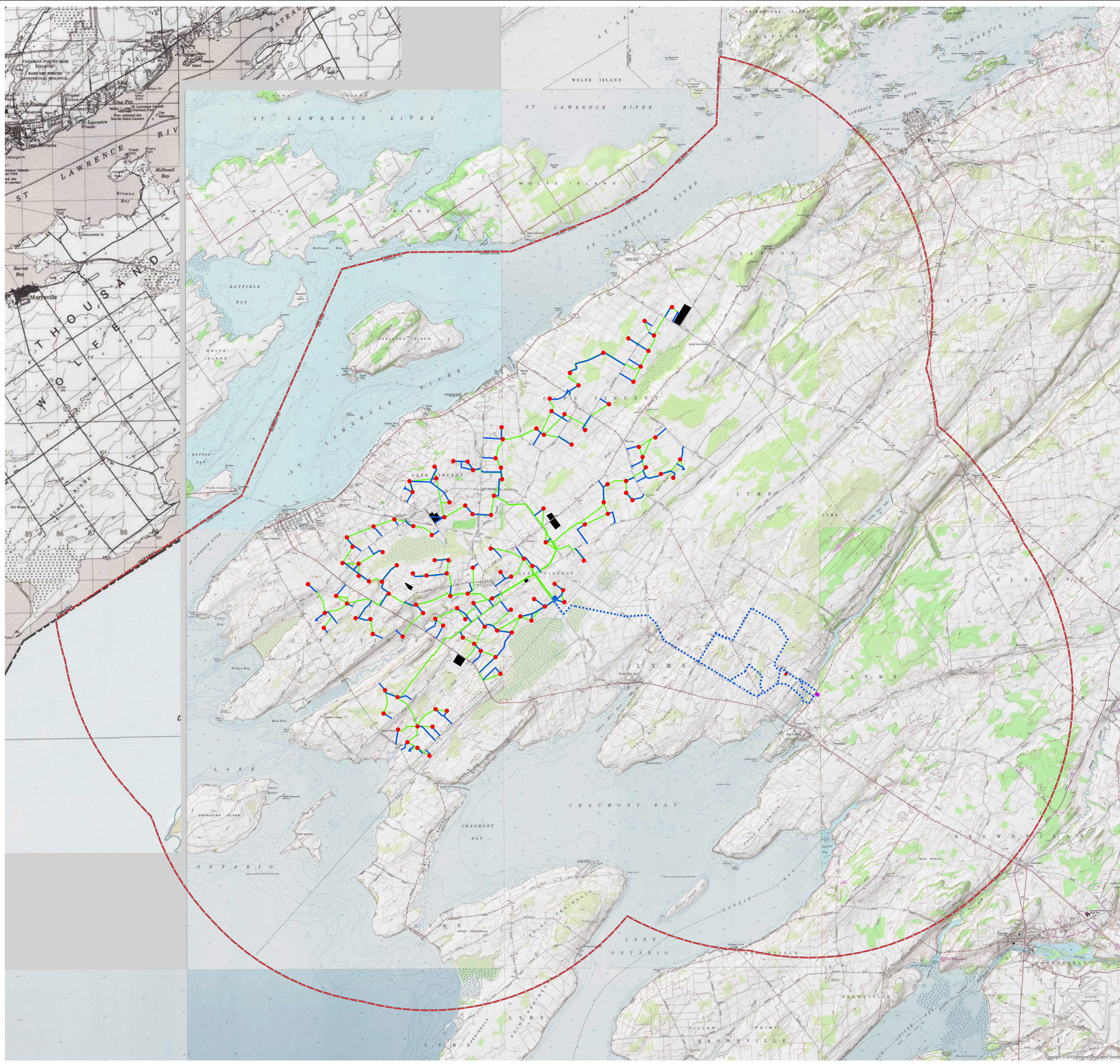
Application of Cape Vincent Wind Power, LLC, for a
Certificate of Environmental Compatibility and Public Need to
Construct an Approximately 200-285 Megawatt Wind Electric
Generating Facility in the Town of Cape Vincent, New York

Case 12-F-0410

PRELIMINARY SCOPING STATEMENT

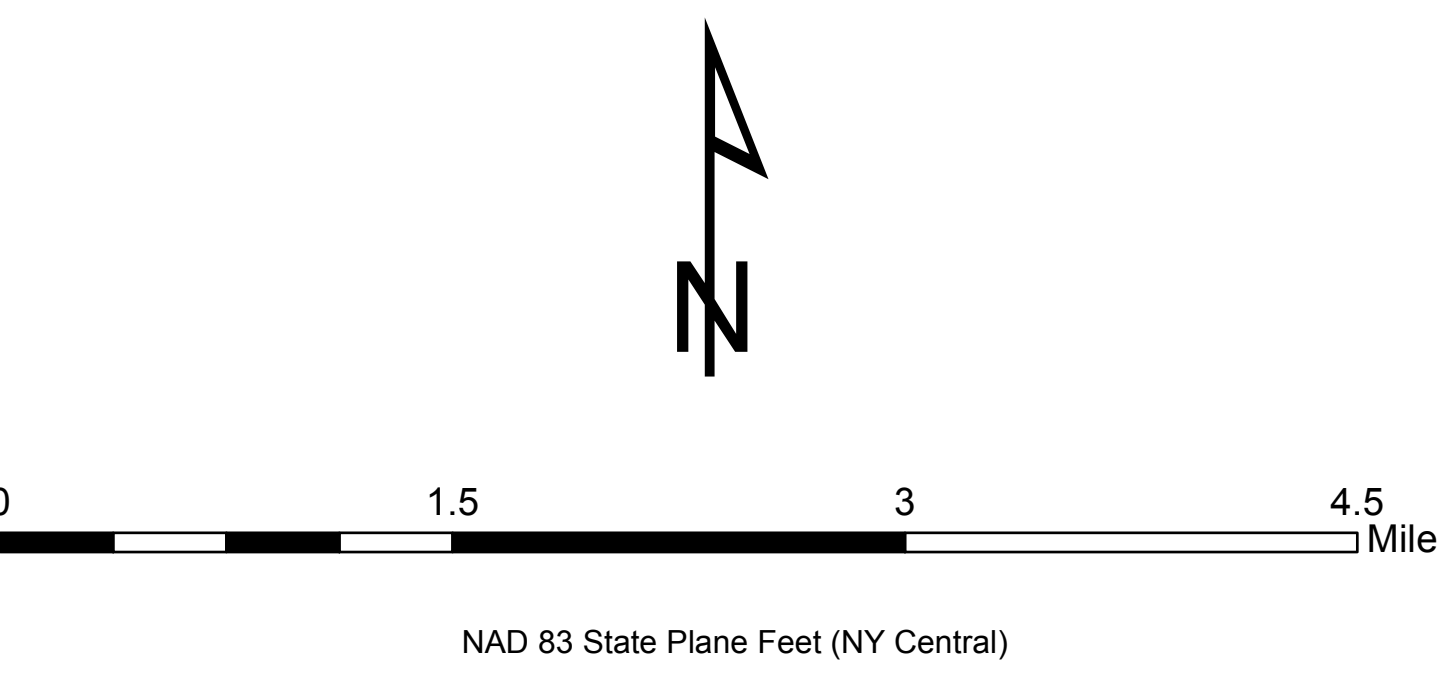
EXHIBIT B

STUDY AREA FOR THE PROJECT



LEGEND

- Proposed Array – 124 Turbines
- ▲ Proposed Meteorological Tower Locations
- Proposed Access Roads
- Proposed Collection
- ⋯ Proposed Generator Interconnection Line Routes
- Facility Areas: batch, laydown, storage, O&M building
- Proposed Project Substation
- Proposed Switching Station
- Point of Interconnection Substation
- Study Area



NOTES:

The Study Area generally includes the area within a radius of at least five miles from all generating facilities components, interconnections and related facilities and alternative location sites, although this distance differs for the evaluation of some resources.

Background : © 2010 National Geographic Society, Esri, DeLorme, NAVTEQ, UNEP-WCMC, USGS, NASA, ESA, METI, NRCAN, GEBCO, NOAA, IPC

All project components in the Town of Cape Vincent are sited in the Agricultural and Residential District (AR)

****Information Subject to Change March 2013 ****

****PROPRIETARY INFORMATION****
 This drawing is proprietary information owned by BP Wind Energy NA, Inc. Any unauthorized reproduction or distribution is prohibited. Subject to Change.



Town of Cape Vincent, Town of Lyme
 Village of Chaumont
 Jefferson County, NY



Proposed Cape Vincent Wind Farm

**Study Area
 Exhibit B**