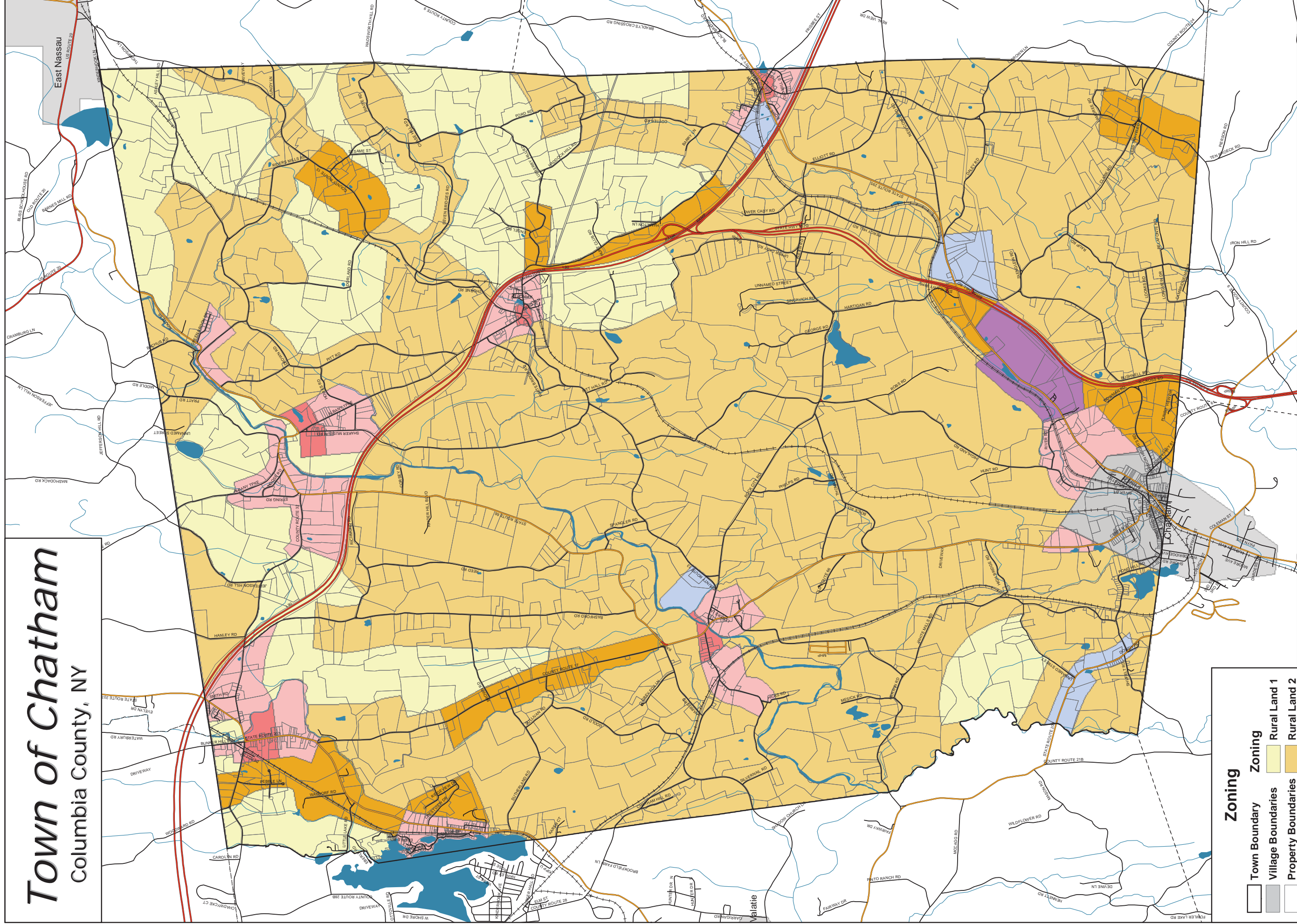


Town of Chatham

Columbia County, NY



Zoning

- Town Boundary
- Village Boundaries
- Property Boundaries
- Water Features
- Streams
- Rural Land 1
- Rural Land 2
- Rural Land 3
- Hamlet 1
- Hamlet 2
- Industrial
- Business
- Village



2 Miles

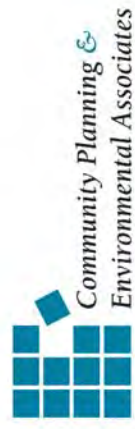
1

0.5

0

Columbia County Transmission Project
Article VII Application
Figure 7-1

Draft Map Date:
10-27-2004

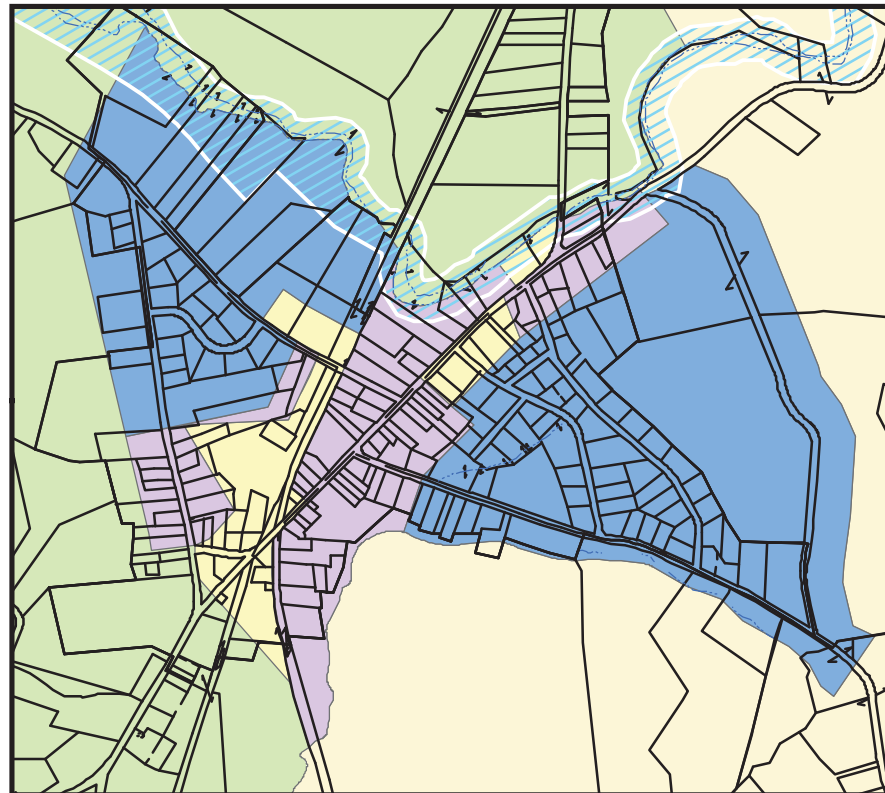


Community Planning &
Environmental Associates

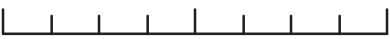
Nan Stolzenburg, AICP - www.planningbetterplaces.com
152 Stolzenburg Road, Berne, NY 12023
Don Meltz, Planning and GIS - www.donmeltz.com

ZONING MAP PREPARED FOR THE TOWN OF GHENT

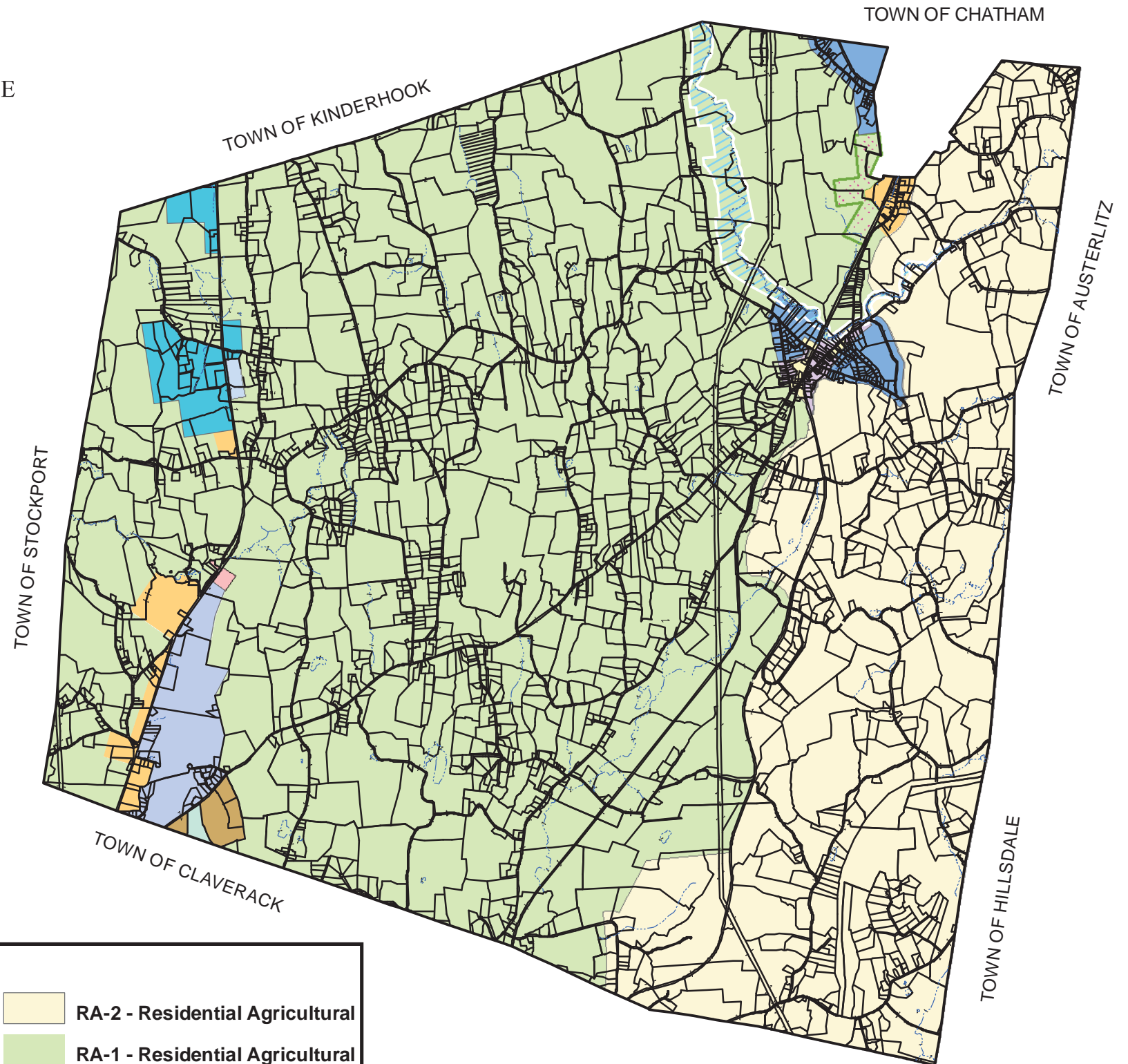
HAMLET INSET



0.25 0.125 0 0.25 Miles



1 inch equals 0.25 miles



Legend

FAO - Flood Area Overzone	CI-3 - Commercial Industrial	RA-2 - Residential Agricultural
BC - Business/Commercial	BIC - Business Industrial Complex	RA-1 - Residential Agricultural
SR - Suburban Residential	VR - Village Residential	Town Boundary
LCB - Limited Commercial Business	VB - Village Business	Tax Parcel Boundaries
CI - Commercial Industrial	PCID overzone	Water
CI-2 - Commercial Industrial	PCID - Planned Commercial Industrial Development	

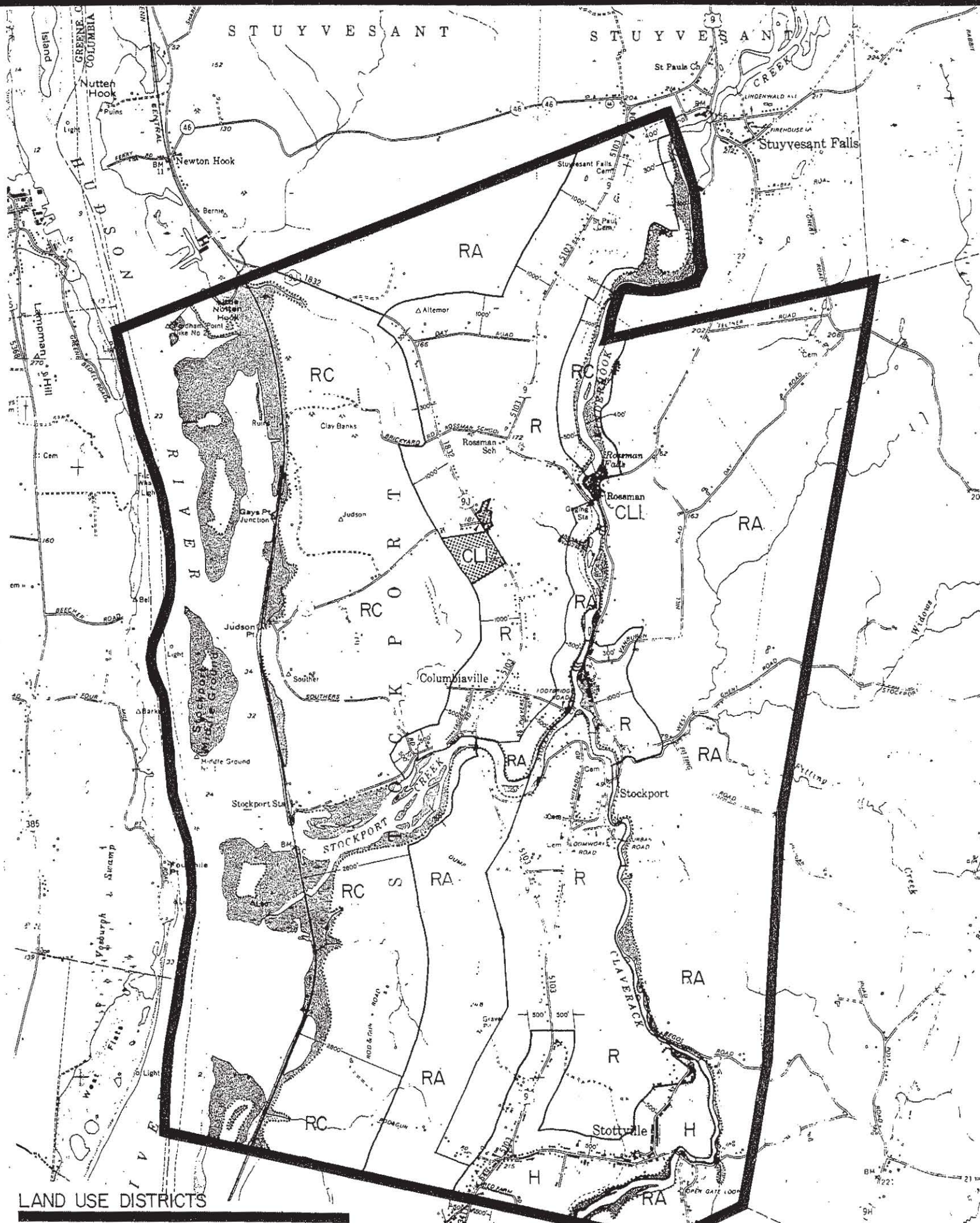
0 0.5 1 1.5 2 Miles



1 inch equals 1 miles

Map updated August 19, 2010
to reflect current Zoning District Boundaries

MORRIS ASSOCIATES
ENGINEERING CONSULTANTS, PLLC
64 Green Street, Suite 1 Hudson, NY 12534
Tel: (518) 828-2300 Fax: (518) 828-3963



- LAND USE DISTRICTS**
- H HAMLET
 - R RESIDENTIAL
 - RA RESIDENTIAL AGRICULTURAL
 - RC RESIDENTIAL CONSERVATION
 - CLI COMMERCIAL-LIGHT INDUSTRIAL
 - PD PLANNED DEVELOPMENT
- unmapped 1-88
 - FW FLOODWAY
- refer to FEMA map
 - FF-0 FLOOD-FRINGE OVERLAY
- per FEMA map

THE PREPARATION OF THIS MAP WAS FINANCIALLY ASSISTED THROUGH A FEDERAL GRANT FROM THE DEPARTMENT OF HOUSING AND URBAN DEVELOPMENT UNDER THE COMPREHENSIVE PLANNING ASSISTANCE PROGRAM AUTHORIZED BY SECTION 701 OF THE FEDERAL HOUSING ACT OF 1954, AS AMENDED. THIS MAP WAS PREPARED UNDER THE COMPREHENSIVE PLANNING ASSISTANCE PROGRAM FOR THE NEW YORK STATE OFFICE OF PLANNING COORDINATION. IT WAS FINANCED IN PART BY THE STATE OF NEW YORK. COLUMBIA COUNTY PLANNING DEPARTMENT

LAND USE DISTRICT MAP 1-88
TOWN OF STOCKPORT



Columbia County
Transmission Project
Article VII Application
Figure 7-3

IMPORTANT NOTICE

THIS MAP REFLECTS ZONING BOUNDARIES AS OF JANUARY 1988 WHICH ARE SUBJECT TO CHANGE. CHECK WITH TOWN OFFICIALS TO CONFIRM CURRENT BOUNDARIES.