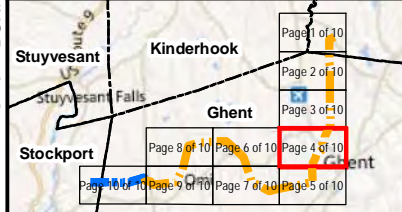
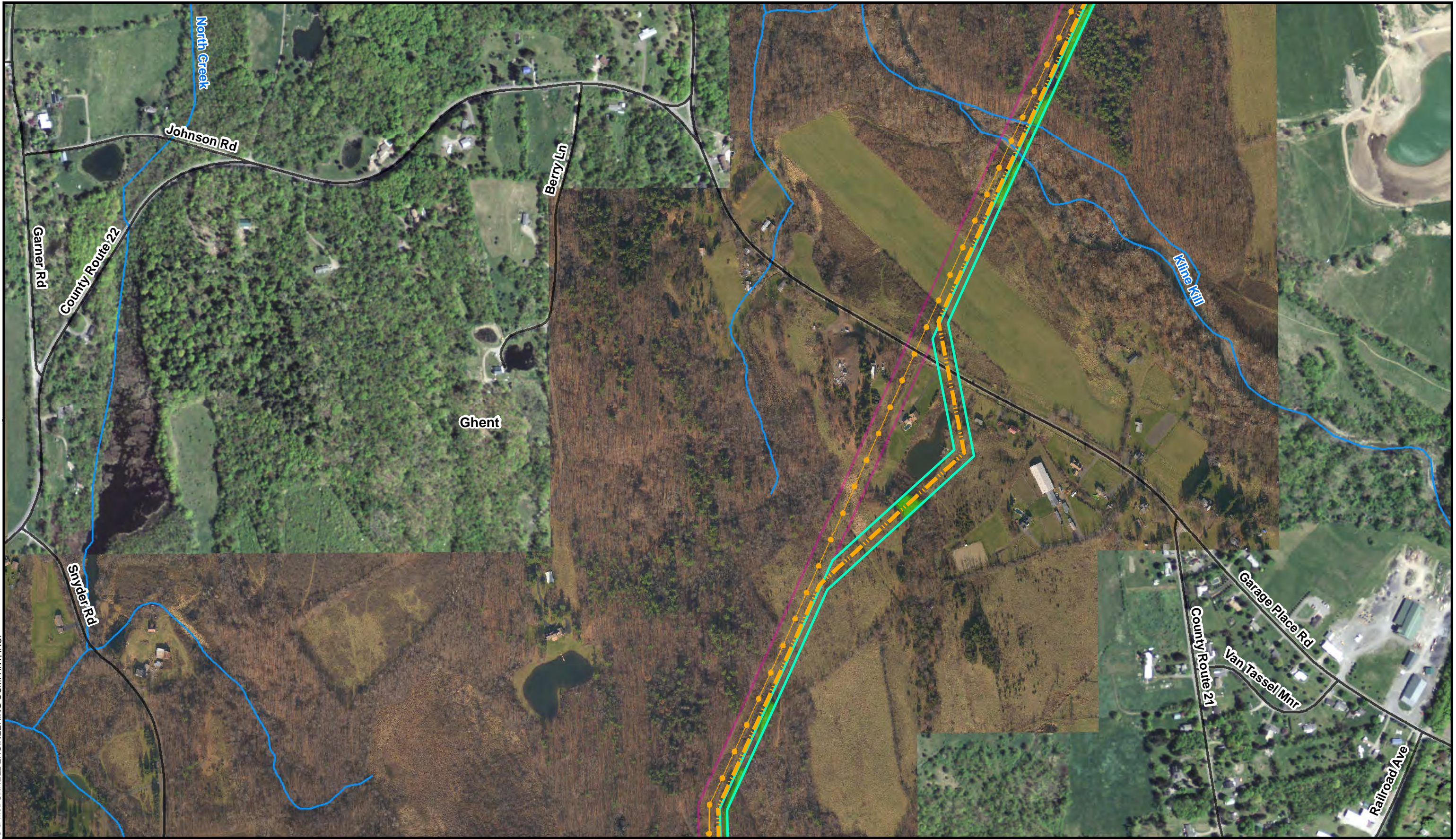


Path: V:\NYSEG\68615\_Klinekill\_Vaikin\GIS\DataFiles\Application\_Maps\Revised\Figure\_2-3\_Mapbook.mxd dwerth 5/18/2012  
 COPYRIGHT © 2012 BURNS & McDONNELL ENGINEERING COMPANY, INC.



Existing Substation	Ghent Switching Station	Existing ROW Boundary
Roads	Circuit #726	Circuit 726 New Right-of-Way
Existing NYSEG Transmission Line	Extension of National Grid 115-kV Trunk #15	Areas of Permanent Clearing
Existing National Grid Transmission Line	Streams	Town Boundary



**Columbia County Transmission Project**  
**Aerial Location of Proposed Facility**  
**Figure 2-3d**  
**Page 4 of 10**